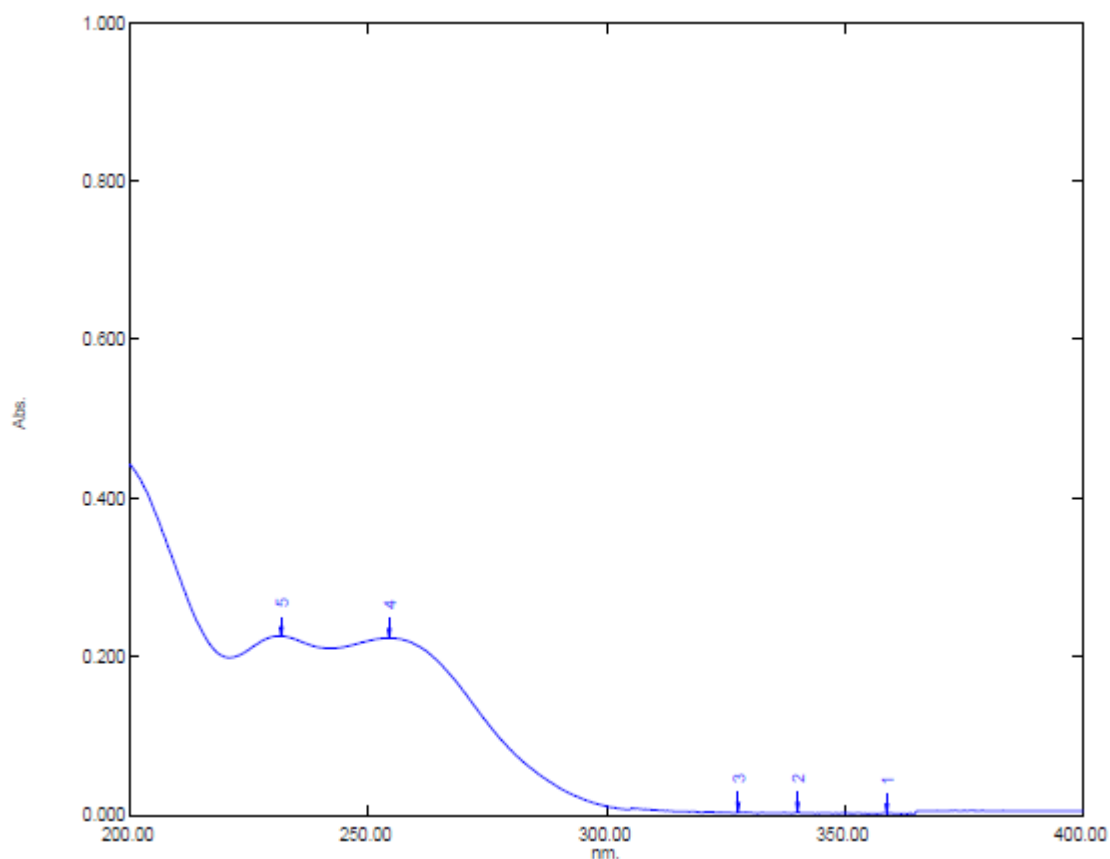


## SUPPLEMENTED MATERIAL

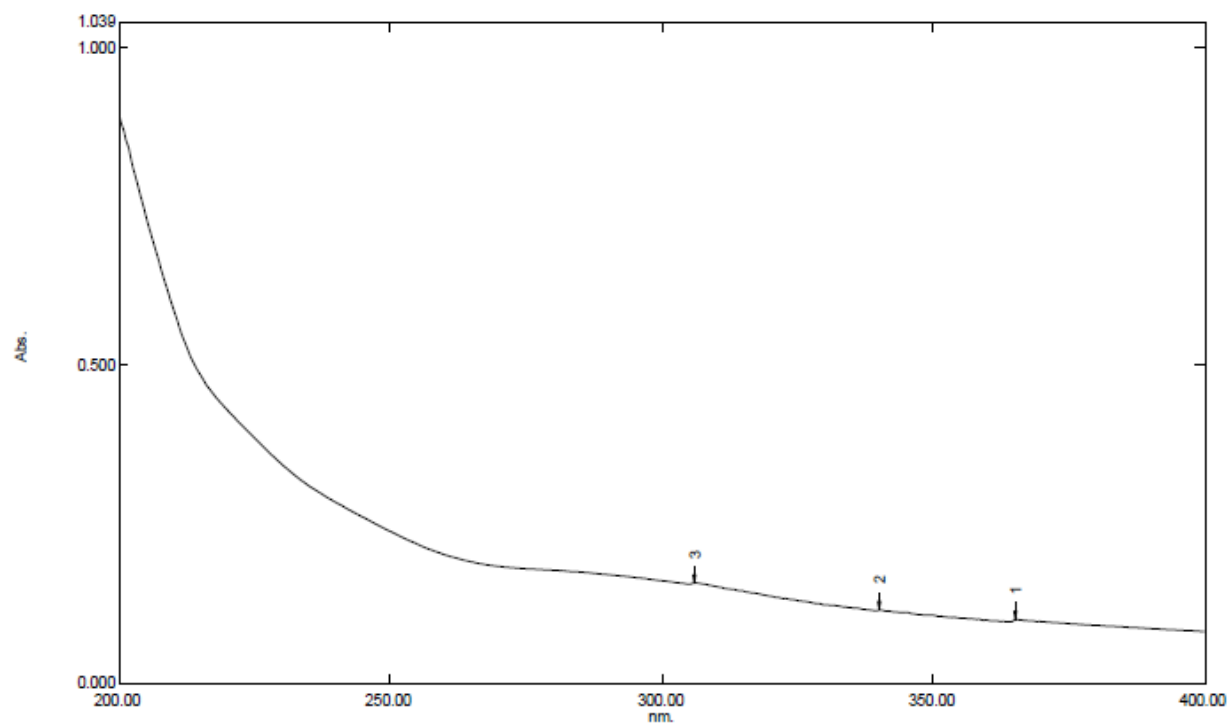
# Development of Lipidic Nanoplatform for Intra-Oral Delivery of Chlorhexidine: Characterization, Biocompatibility and Assessment of Depth of Penetration in Extracted Human Teeth

Krishnaraj Somyaji Shirur <sup>1</sup>, Bharath Singh Padya <sup>2</sup>, Abhijeet Pandey <sup>2</sup>, Manasa Manjunath Hegde <sup>3</sup>, Aparna I Narayan <sup>4</sup>, Bola Sadashiva Satish Rao <sup>3</sup>, Varadaraj G Bhat <sup>5</sup>, and Srinivas Mutalik <sup>2,\*</sup>

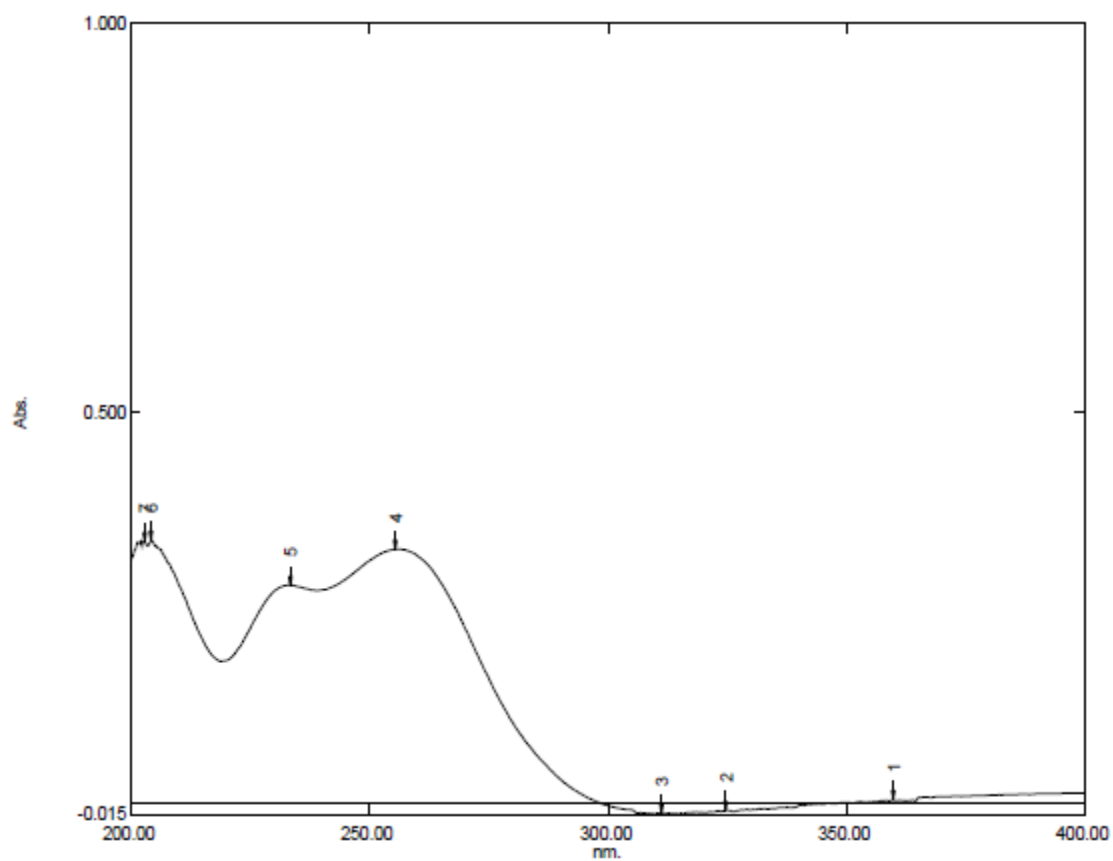
### I) Selection of 254 nm as $\lambda_{\text{max}}$ for the estimation of CHX



**Figure S1. UV spectrum of CHX solution in water recorded using UV/ Vis Spectrophotometer**

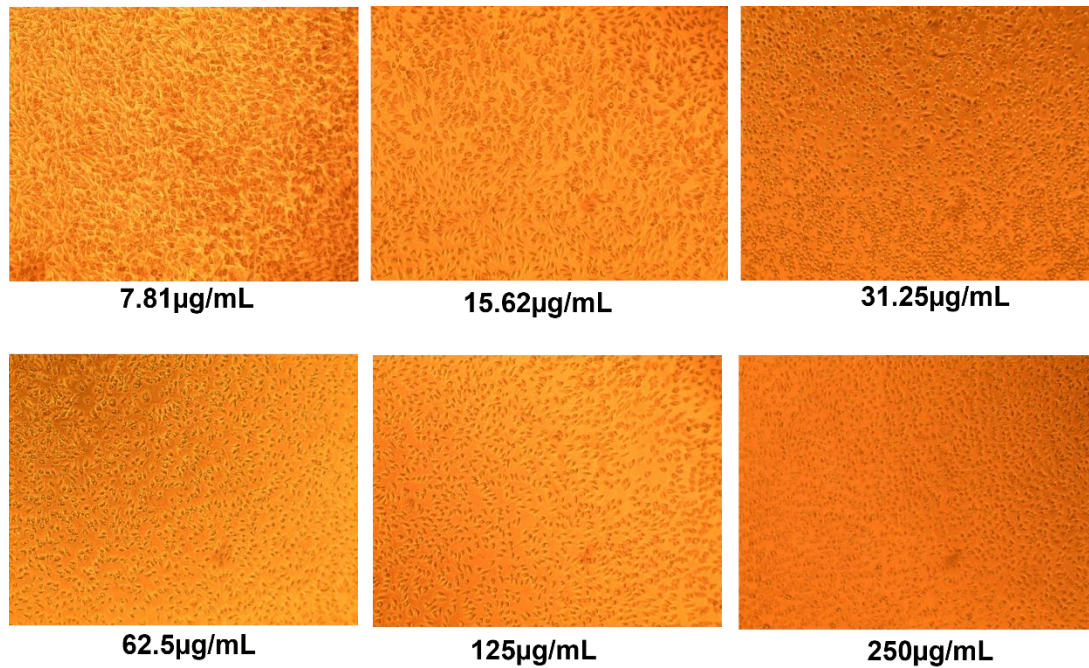


**Figure S2. UV spectrum of blank liposomes (containing only the excipients of liposomes without CHX) recorded using UV/ Vis Spectrophotometer**

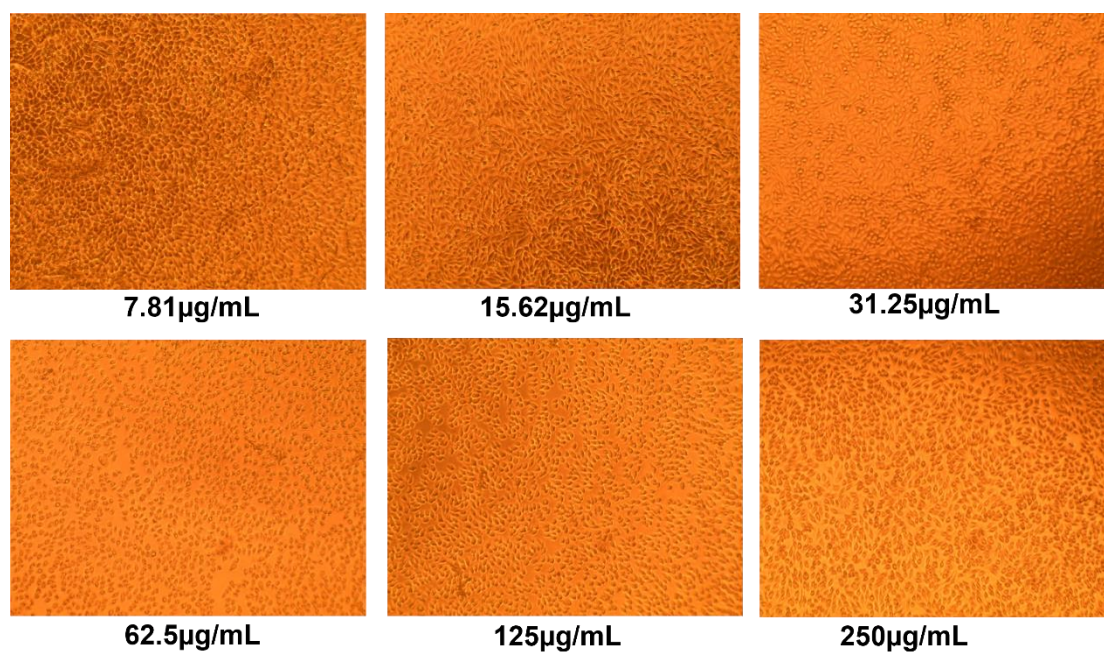


**Figure S3. UV spectrum of CHX liposomes recorded using UV/ Vis Spectrophotometer**

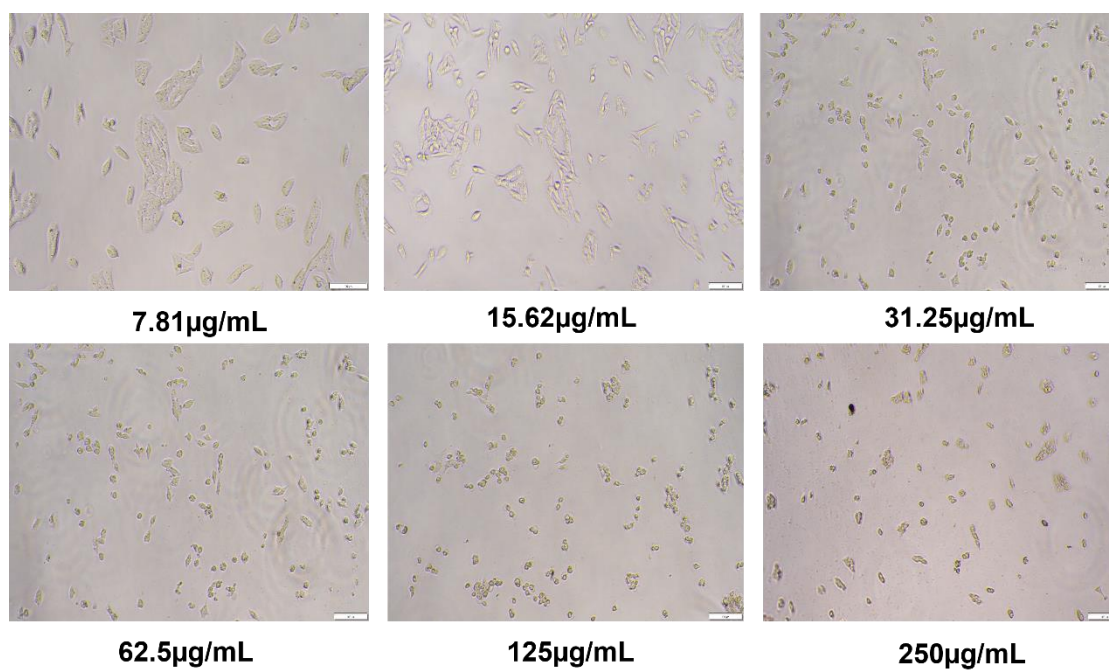
**II) Bright-field Microscopic Images:** The fibroblast cells, L929 and 3T3, were treated with different concentrations of plain CHX solution and liposomal CHX for 24 h. After incubation, the cells were observed under Bright-field microscope to study the cell morphology. The images were captured at the magnification of 10x/ 20x and represented as shown below.



**Figure S4. The bright-field microscopic images of L929 cells at 24 h after different treatments of plain CHX solution**

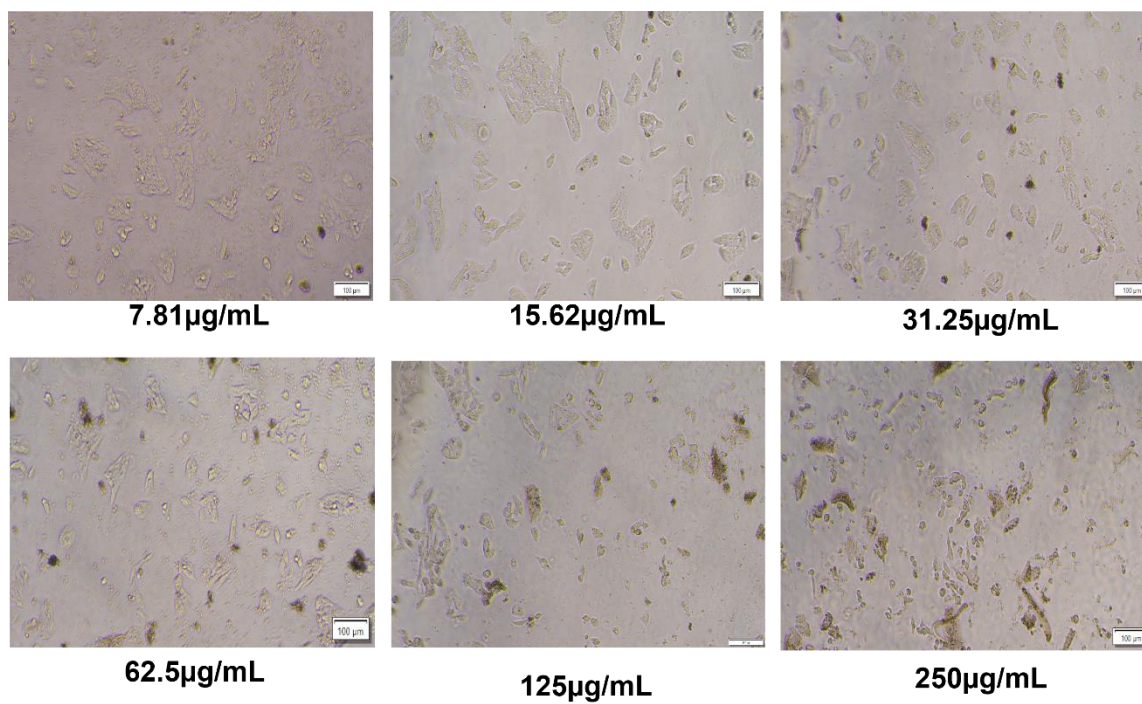


**Figure S5. The bright-field microscopic images of L929 cells at 24 h after different treatments of liposomal CHX**



**Figure S6. The bright-field microscopic images of 3T3 cells at 24 h after different treatments of plain CHX solution**





**Figure S7. The bright-field microscopic images of 3T3 cells at 24 h after different treatments of liposomal CHX**