



Supplemental Information

Optimization Temperature Programming of Microwave-Assisted Synthesis ZnO Nanoneedle Arrays for Optical and Surface-Enhanced Raman Scattering Applications

Tung-Hao Chang ^{1,2,3}, Yu-Cheng Chang ^{4,*}, Chung-I Lee ⁵, Ying-Ru Lin ^{4,5}, and Fu-Hsiang Ko ^{5,*}

¹ Department of Radiation Oncology, Changhua Christian Hospital, Changhua, 50006, Taiwan,

² Department of Radiological Technology, Yuanpei University, Hsinchu, 30015, Taiwan,

³ Department of Medical Imaging and Radiological Sciences, Central Taiwan University of Science and Technology, Taichung, 40601, Taiwan,

⁴ Department of Materials Science and Engineering, Feng Chia University, Taichung 407, Taiwan;

⁵ Department of Materials Science and Engineering, National Yang Ming Chiao Tung University, Hsinchu 30010, Taiwan

* Correspondence: yuchchang@fcu.edu.tw, fhko@mail.nctu.edu.tw

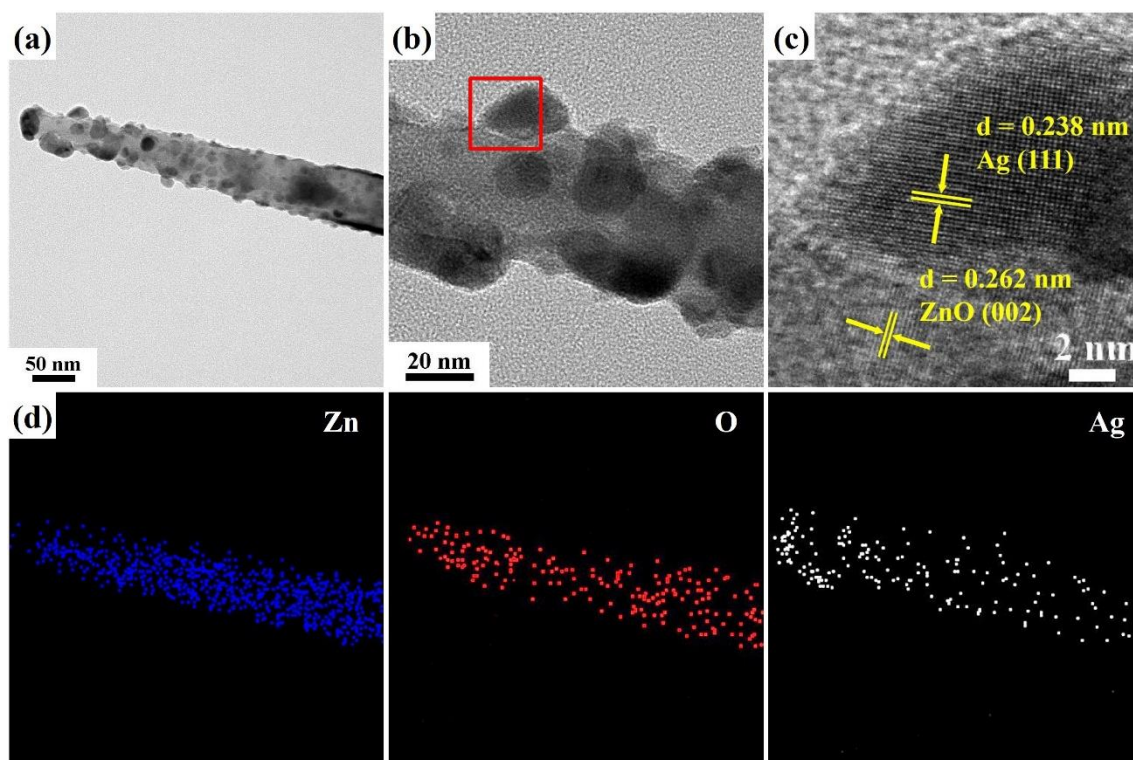


Figure S1 (a) low- and (b) high-magnification TEM, (c) HRTEM, and (d) EDS mapping images of a ZnO/Ag nanoneedle in Figure S1a. The EDS mapping images are Zn, O, and Ag, respectively.

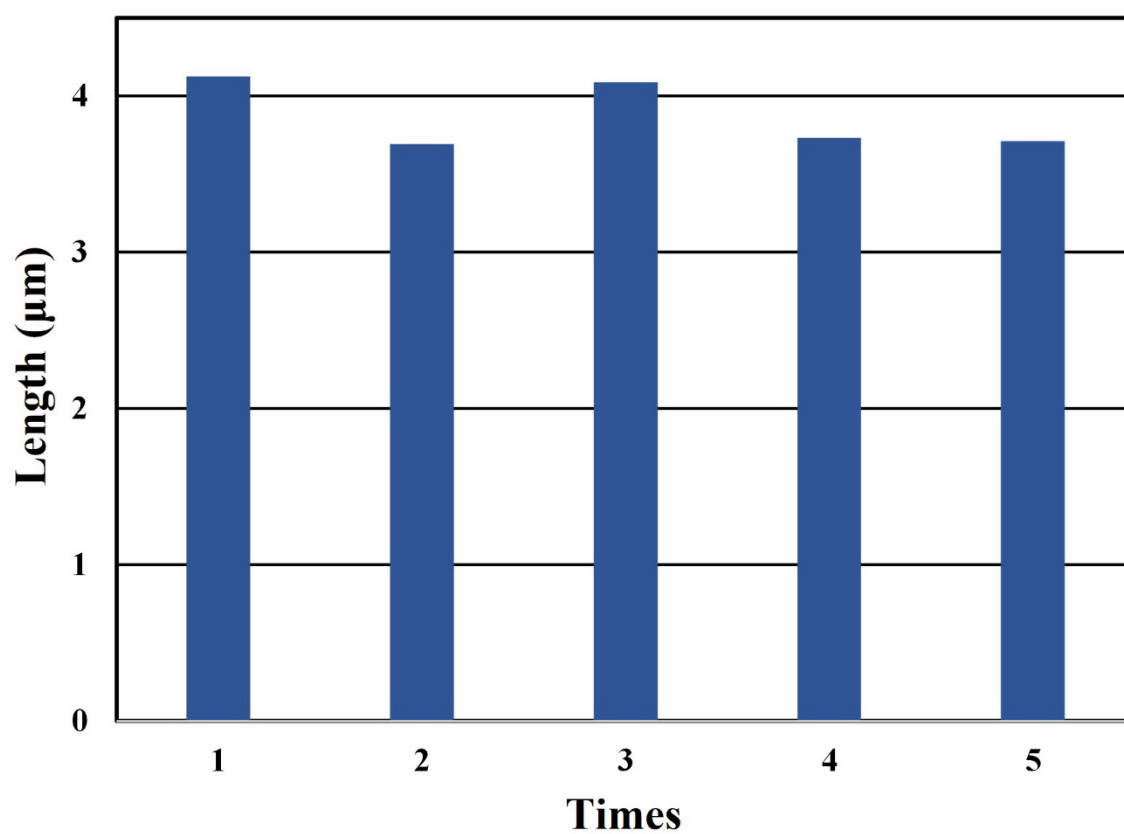


Figure S2 The ZnO nanoneedle arrays (MW1-3) lengths grown at different repeats.