



Understanding the Morphological Evolution of InSb Nanoflags Synthesized in Regular Arrays by Chemical Beam Epitaxy

Isha Verma ¹, Valentina Zannier ^{1,*}, Vladimir G. Dubrovskii ², Fabio Beltram ¹ and Lucia Sorba ¹

¹ NEST, Scuola Normale Superiore and Nanoscienze-CNR, Piazza San Silvestro 12, I-56127 Pisa, Italy; isha.verma@sns.it (I.V.); fabio.beltram@sns.it (F.B.); lucia.sorba@nano.cnr.it (L.S.)

² Faculty of Physics, St. Petersburg State University, Universitetskaya Emb. 13B, 199034 St. Petersburg, Russia; dubrovskii@mail.ioffe.ru

* Correspondence: valentina.zannier@nano.cnr.it

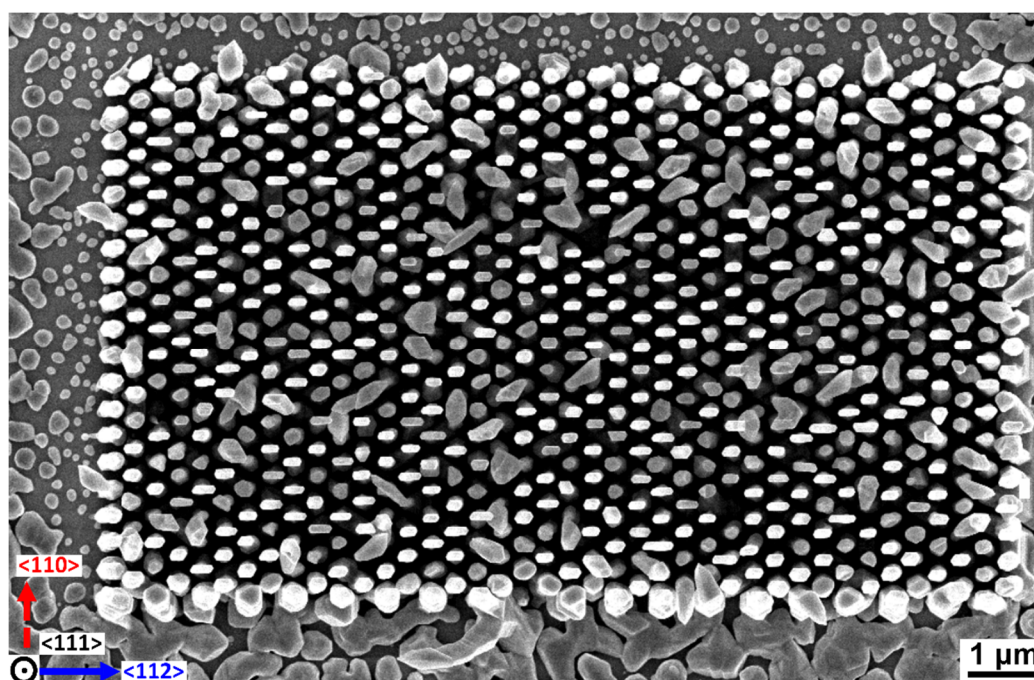


Figure S1. Low magnification top-view SEM image of InP-InSb heterostructure NFs grown for 60 min in the pattern having a pitch a of 700 nm. The yield of straight InSb NFs is $\sim 87\%$.