

Supplementary information

Insights into the Correlation between Residual Stresses, Phase Transformation, and Wettability of Femtosecond Laser-Irradiated Ductile Iron

Dhiraj Kumar ^{1,*}, Gerhard Liedl ¹, Andreas Otto ¹ and Werner Artner ²

¹ Institute of Production Engineering and Photonic Technologies, TU Wien, Vienna 1030, Austria; gerhard.liedl@tuwien.ac.at (G.L.); otto@ift.at (A.O.)

² X-ray Center, TU Wien, Vienna 1060, Austria; werner.artner@tuwien.ac.at

* Correspondence: dhiraj.kumar@tuwien.ac.at

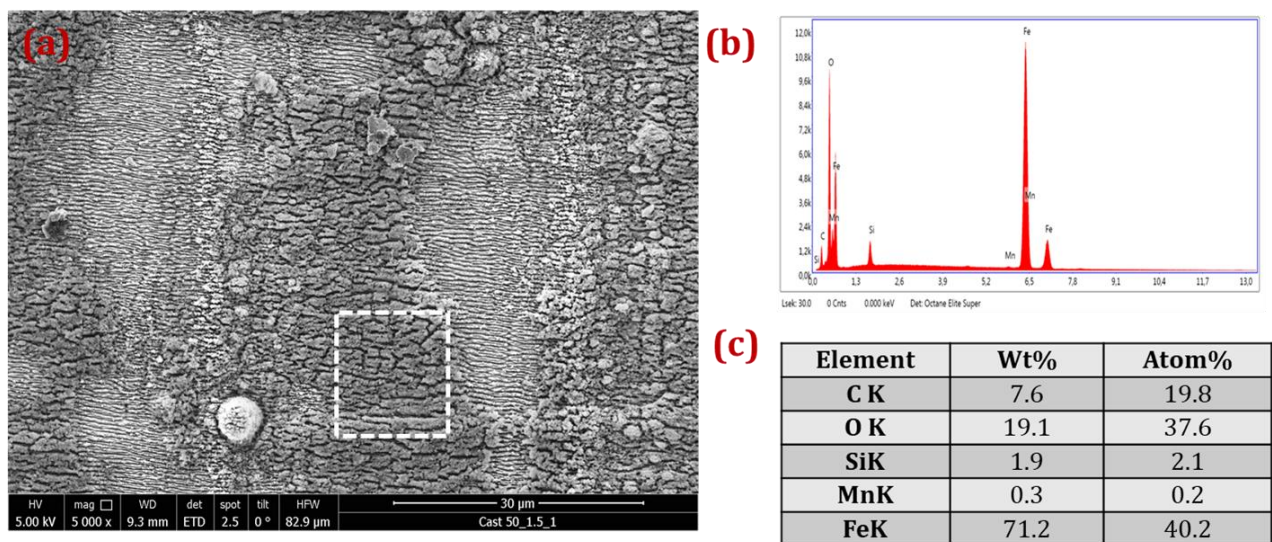


Figure S1. (a) SEM micrograph with area of interest (marked in white dotted line), (b) obtained EDAX spectra, and (c) the corresponding elemental concentration.

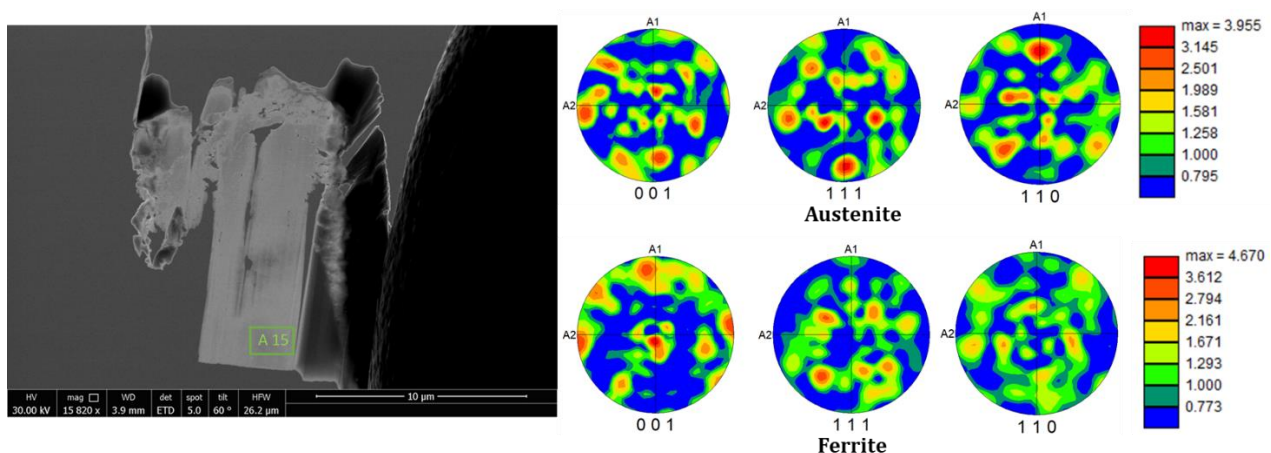


Figure S2. Texture intensity of the samples taken deeper from the laser structured surface (Area of interest marked in green).

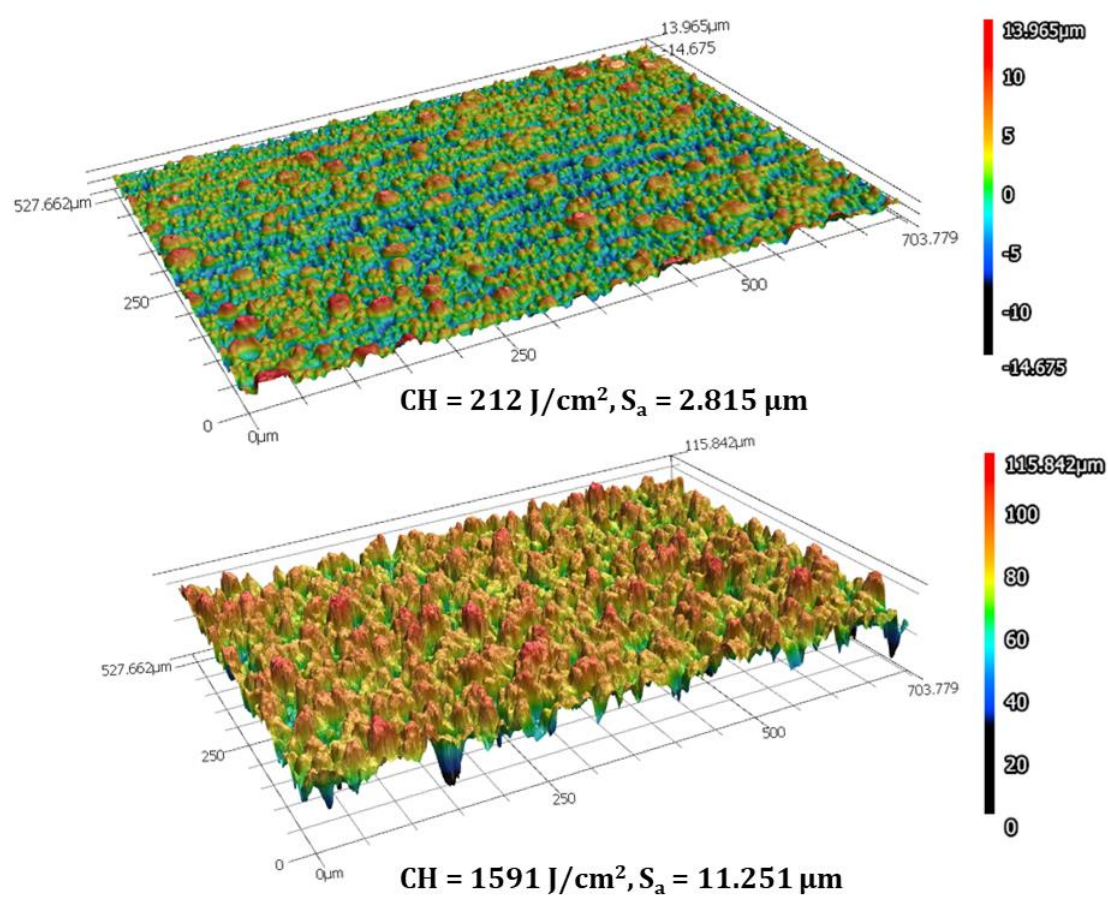


Figure S3. 3D-surface topography and the corresponding S_a values at 212 J/cm² and 1591 J/cm².