

Supplementary Material

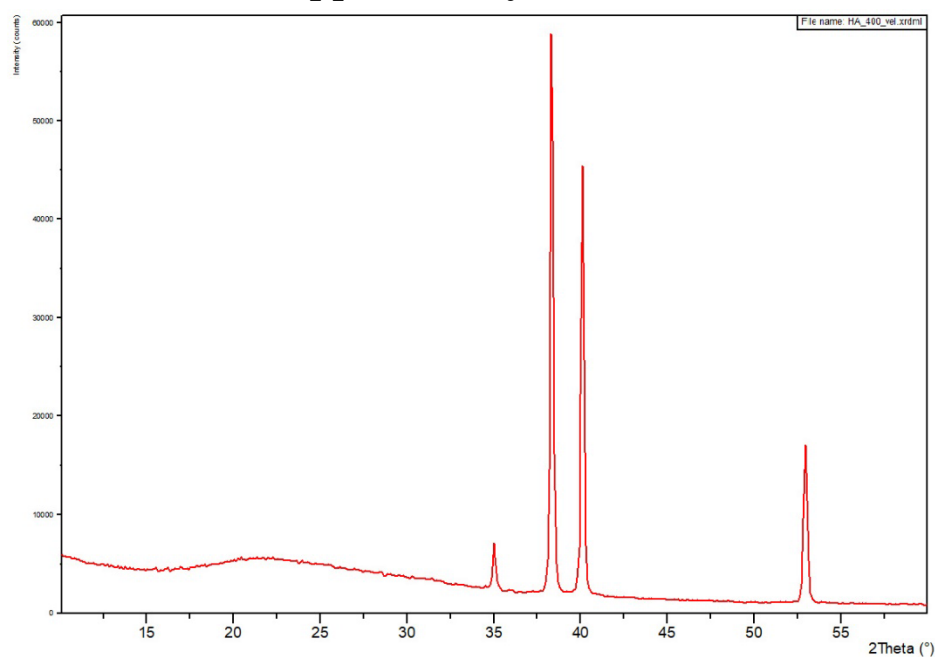


Figure S1 – XRD pattern of HA-c-T400. The peaks are attributed to Ti from the metallic substrate (ICDD card# 01-089-3725)

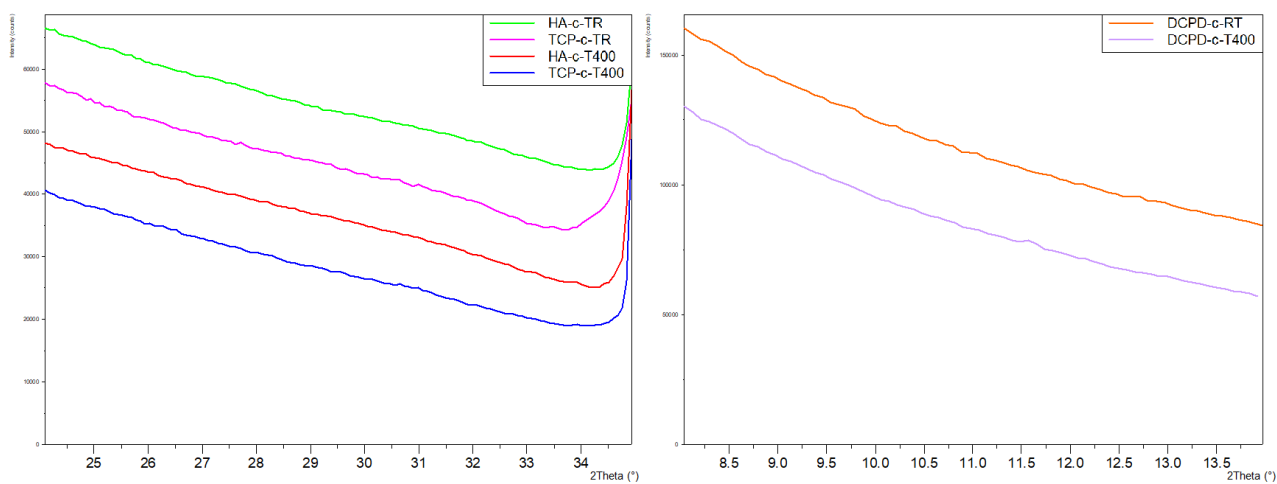


Figure S2 – XRD pattern of coatings collected for longer collection times in the relevant range of 2θ degrees.

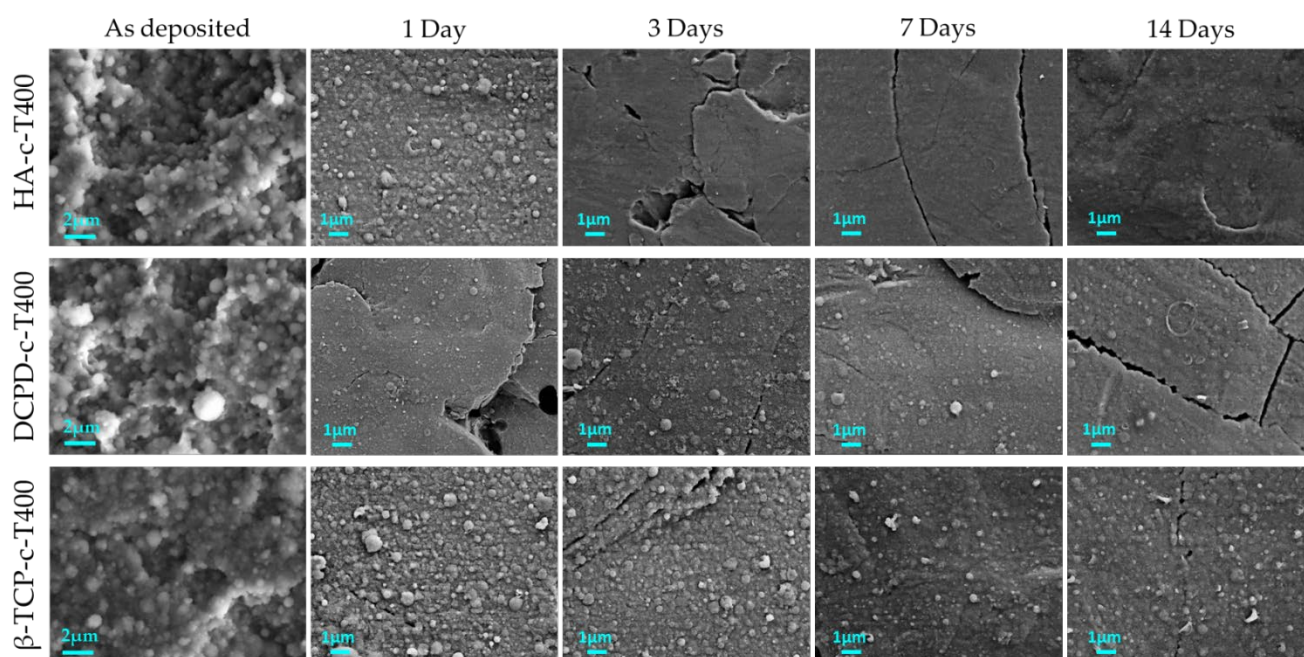


Figure S3 - Morphology of the CaP coatings before treatment (first column), and after 1 (second column), 3 (third column), 7 (fourth column) and 14 days (last column) immersion in medium.