

Supplementary Materials: Spectroscopic and Electrochemical Studies of Imogolite and Fe-Modified Imogolite Nanotubes

Carmen Castro ¹, Nicolas Arancibia-Miranda ^{1,2}, Cristina Acuña-Rougier ¹, Mauricio Escudéy ^{1,2} and Federico Tasca ^{1,*}

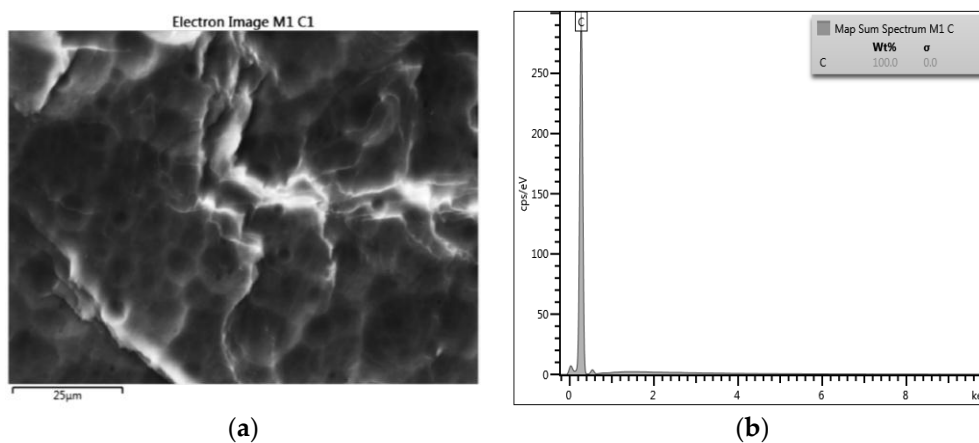


Figure S1. (a) Scanning electron microscopy (SEM) image and (b) energy-dispersive X-ray spectroscopy (EDX) spectrum of the graphite electrodes (GE) basal plane.

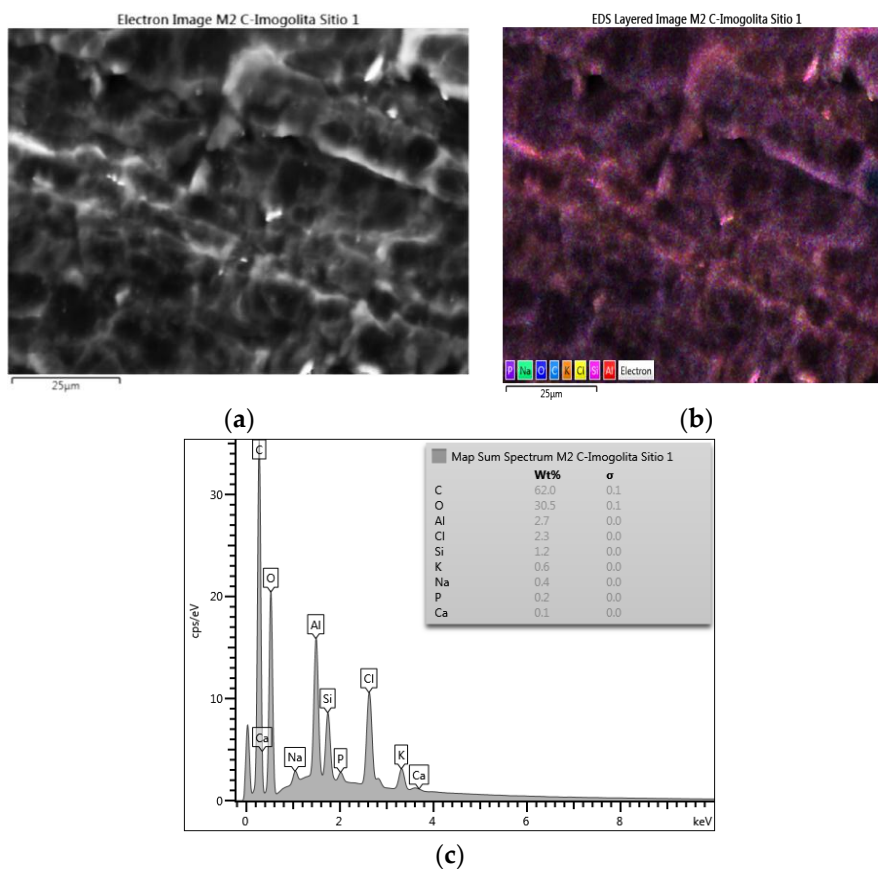


Figure S2. (a) SEM image, (b) layered energy dispersed spectroscopy (EDS) and (c) EDX spectrum of GE modified with Im.

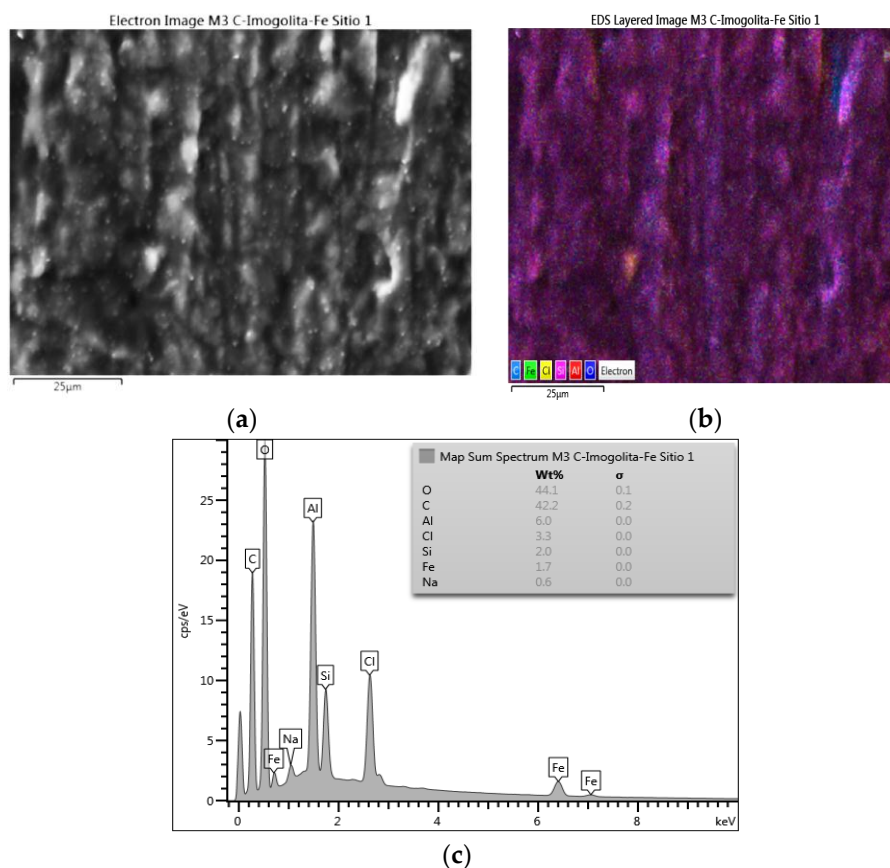


Figure S3. (a) SEM image, (b) layered EDS and (c) EDX spectrum of GE modified with Im(Fe).

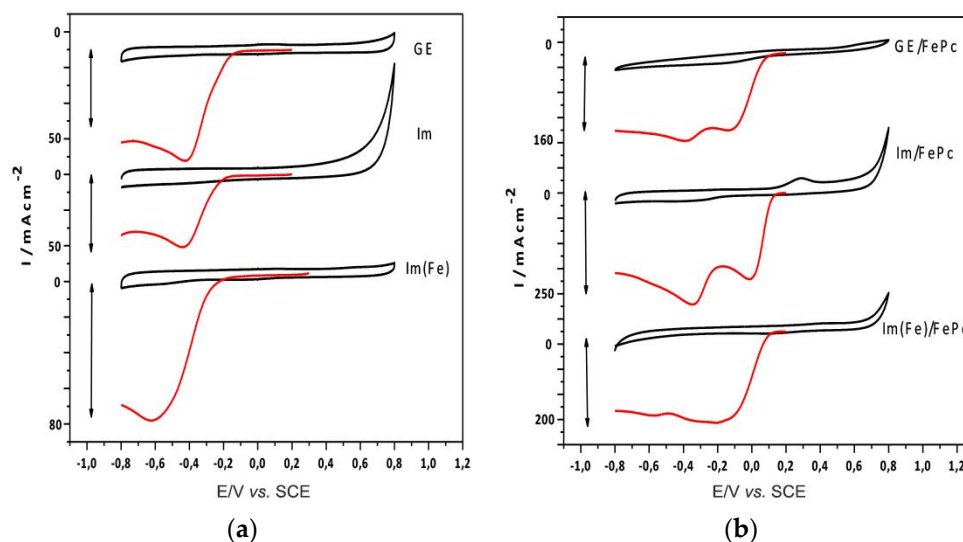


Figure S4. (a) Cyclic voltammetry and polarization curves for the oxygen reduction reaction (ORR) (O_2 saturated conditions, red line) of the GE and GE modified with Im and with Im(Fe); (b) cyclic voltammetry and polarization curves (O_2 saturated conditions, red line) of the GE modified with FePc, Im/FePc and Im(Fe)/FePc.

