

Supplementary Materials: Graphene-Enabled Electrodes for Electrocardiogram Monitoring

Numan Celik, Nadarajah Manivannan, Andrew Strudwick and Wamadeva Balachandran

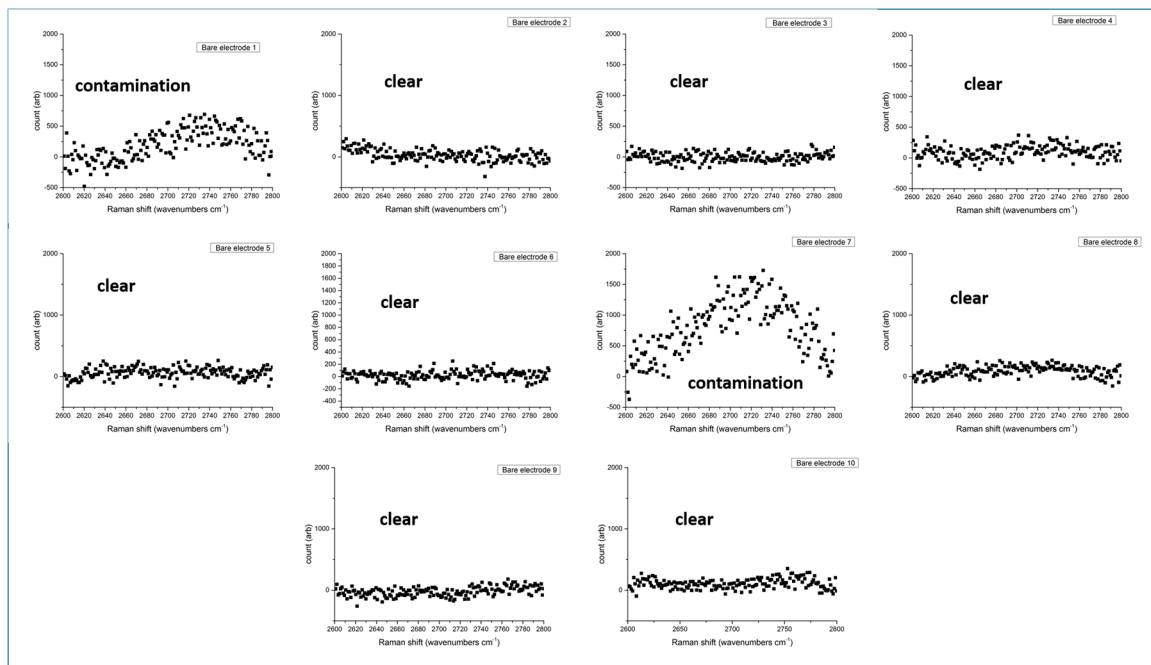


Figure S1. Raman analysis of bare Ag/AgCl electrode for detecting 2D band in 10 measurements.

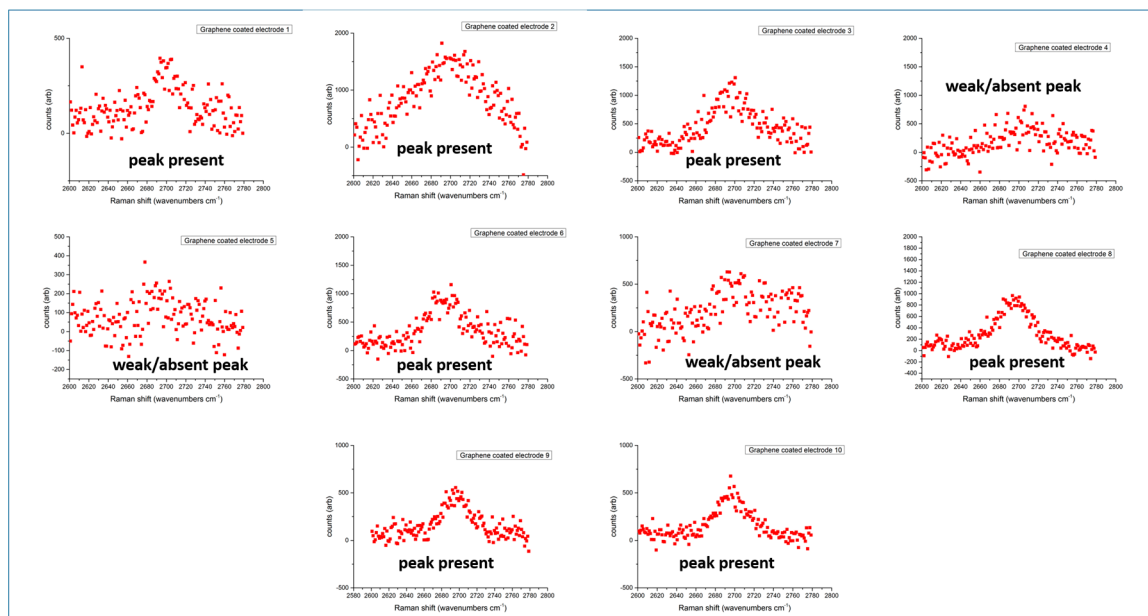


Figure S2. Raman analysis of Graphene-coated electrode for detecting 2D band in 10 measurements. Although weak peaks occurred during tests, 7/10 peaks presented in 2D band appearances.