

# Catalytic Performance of Ni/CeO<sub>2</sub>/X-ZrO<sub>2</sub> (X = Ca, Y) Catalysts in the Aqueous-Phase Reforming of Methanol

Daniel Goma <sup>1,2</sup>, Juan José Delgado <sup>1,2</sup>, Leon Lefferts <sup>3</sup>, Jimmy Faria <sup>3</sup>, José Juan Calvino <sup>1,2</sup> and Miguel Ángel Cauqui <sup>1,2,\*</sup>

<sup>1</sup> Departamento de Ciencia de los Materiales e Ingeniería Metalúrgica y Química Inorgánica, Universidad de Cádiz, Puerto Real 11510, Spain; dani.gomajimenez@gm.uca.es (D.G.); juan jose.delgado@uca.es (J.J.D.); jose.calvino@uca.es (J.J.C.)

<sup>2</sup> IMEYMAT, Instituto de Microscopía Electrónica y Materiales, Puerto Real 11510, Spain

<sup>3</sup> Catalytic Processes and Materials group, University of Twente, P.O. Box 217, 7500 AE Enschede, The Netherlands; l.lefferts@utwente.nl (L.L.); j.a.fariaalbanese@utwente.nl (J.F.)

\* Correspondence: miguelangel.cauqui@uca.es; Tel.: +34-956012747

## Supporting Information

**Table S1.** Composition from ICP (%w/w) of the fresh and used catalysts.

Catalysts	Before reaction					After reaction				
	Ni	Ce	Ca	Y	Zr	Ni	Ce	Ca	Y	Zr
NiZr	7.0±0.1	--	--	--	60.0±0.6	7.1±0.1	--	--	--	58.0±0.6
NiCeZr	5.9±0.1	12.6±0.2	--	--	48.4±0.1	5.6±0.1	13.1±0.2	--	--	46.2±0.1
Ni4CSZ	5.0±0.1	--	1.2±0.1	--	60.0±0.6	5.2±0.1	--	1.1±0.1	--	59.8±0.6
NiCe4CSZ	5.9±0.2	13.0±0.1	1.8±0.1	--	47.6±0.3	6.1±0.2	14.0±0.1	1.6±0.1	--	48.4±0.3
Ni8YSZ	5.6±0.2	--	--	4.3±0.1	56.4±0.3	5.8±0.2	--	--	4.1±0.1	57.2±0.3
NiCe8YSZ	5.5±0.1	12.7±0.1	--	3.6±0.1	46.1±0.2	5.5±0.1	13.0±0.1	--	3.9±0.1	48.2±0.2
Ni14CSZ	6.9±0.1	--	4.9±0.1	--	53.0±0.3	6.7±0.1	--	4.6±0.1	--	57.1±0.3
NiCe14CSZ	5.5±0.2	13.5±0.2	4.0±0.1	--	43.3±0.6	5.6±0.2	13.2±0.2	3.8±0.1	--	43.5±0.6

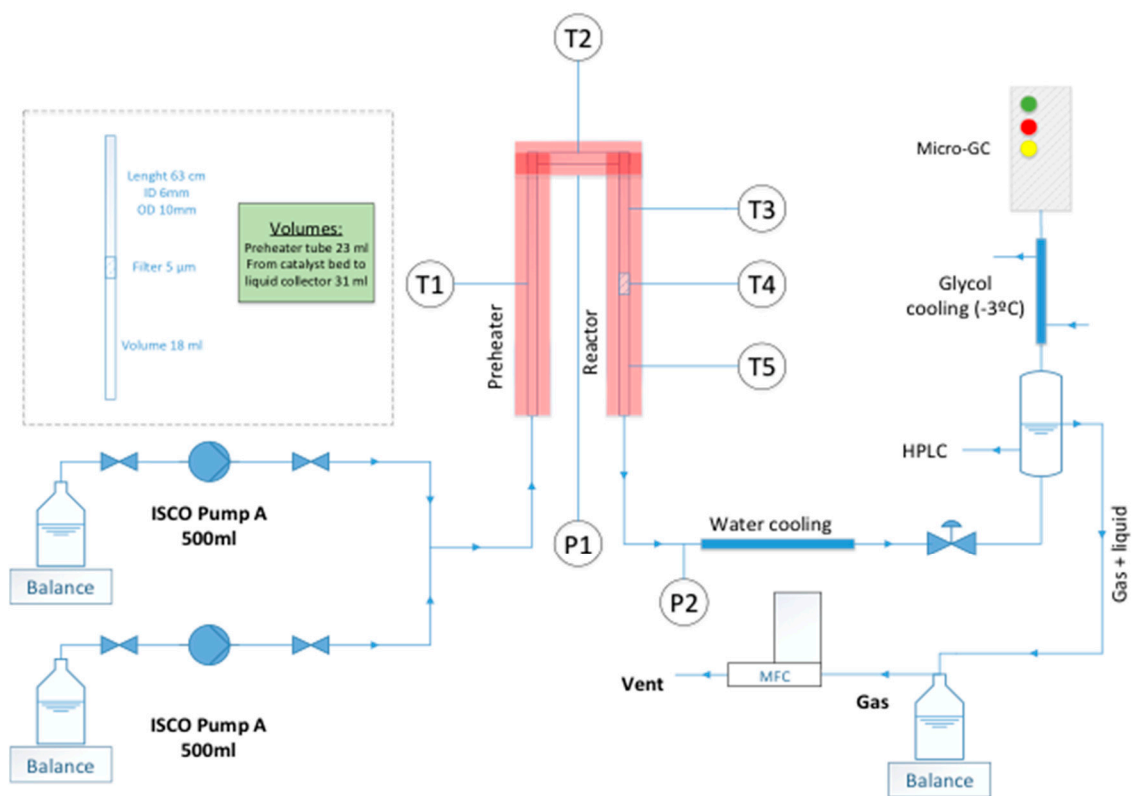
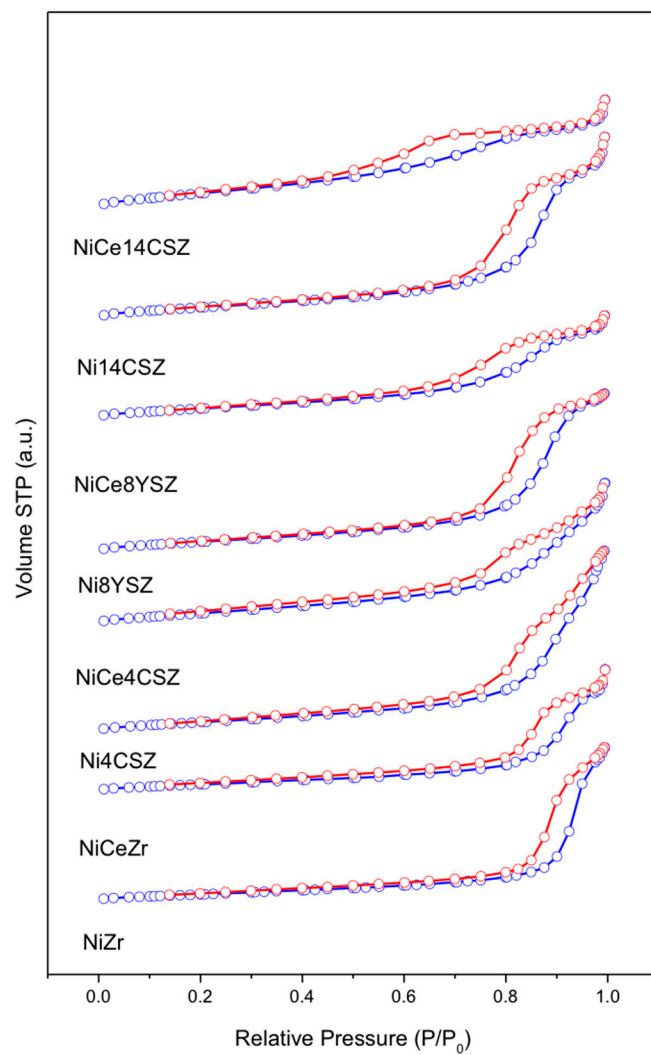


Figure S1. Experimental setup for APR of methanol.



**Figure S2.** N<sub>2</sub> isotherms.

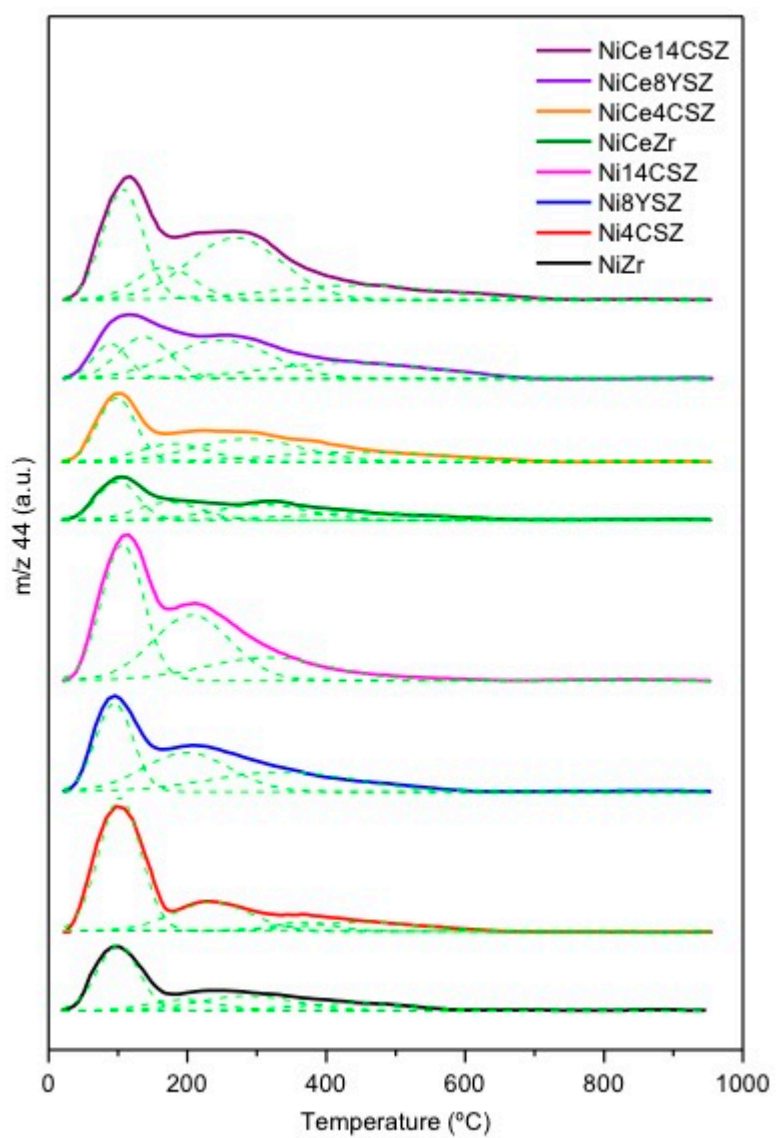


Figure S3. CO<sub>2</sub>-TPD profiles showing deconvoluted peaks.

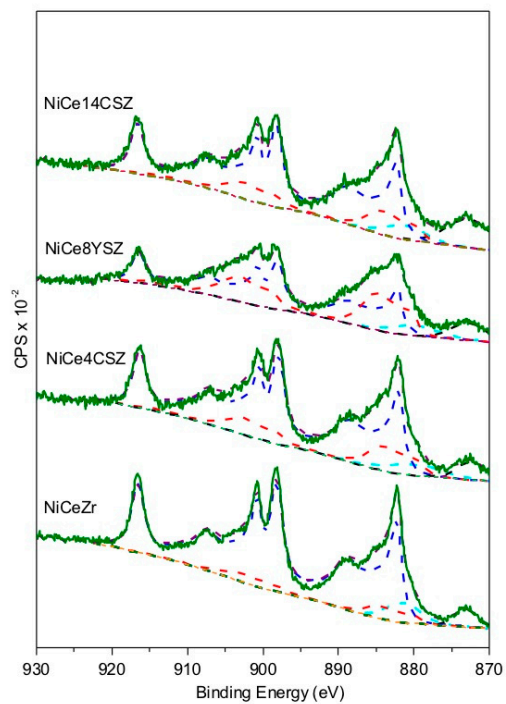


Figure S4. Ce 3d XPS spectra.

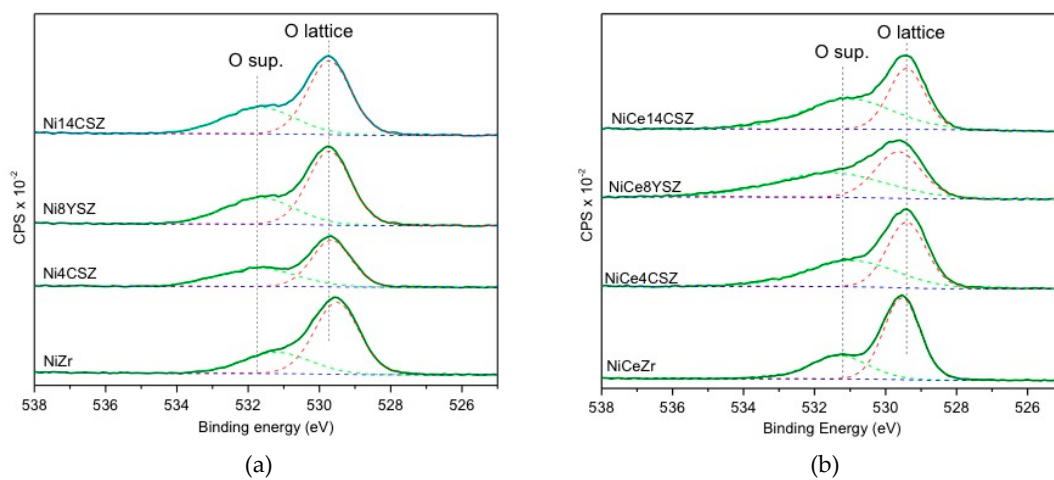
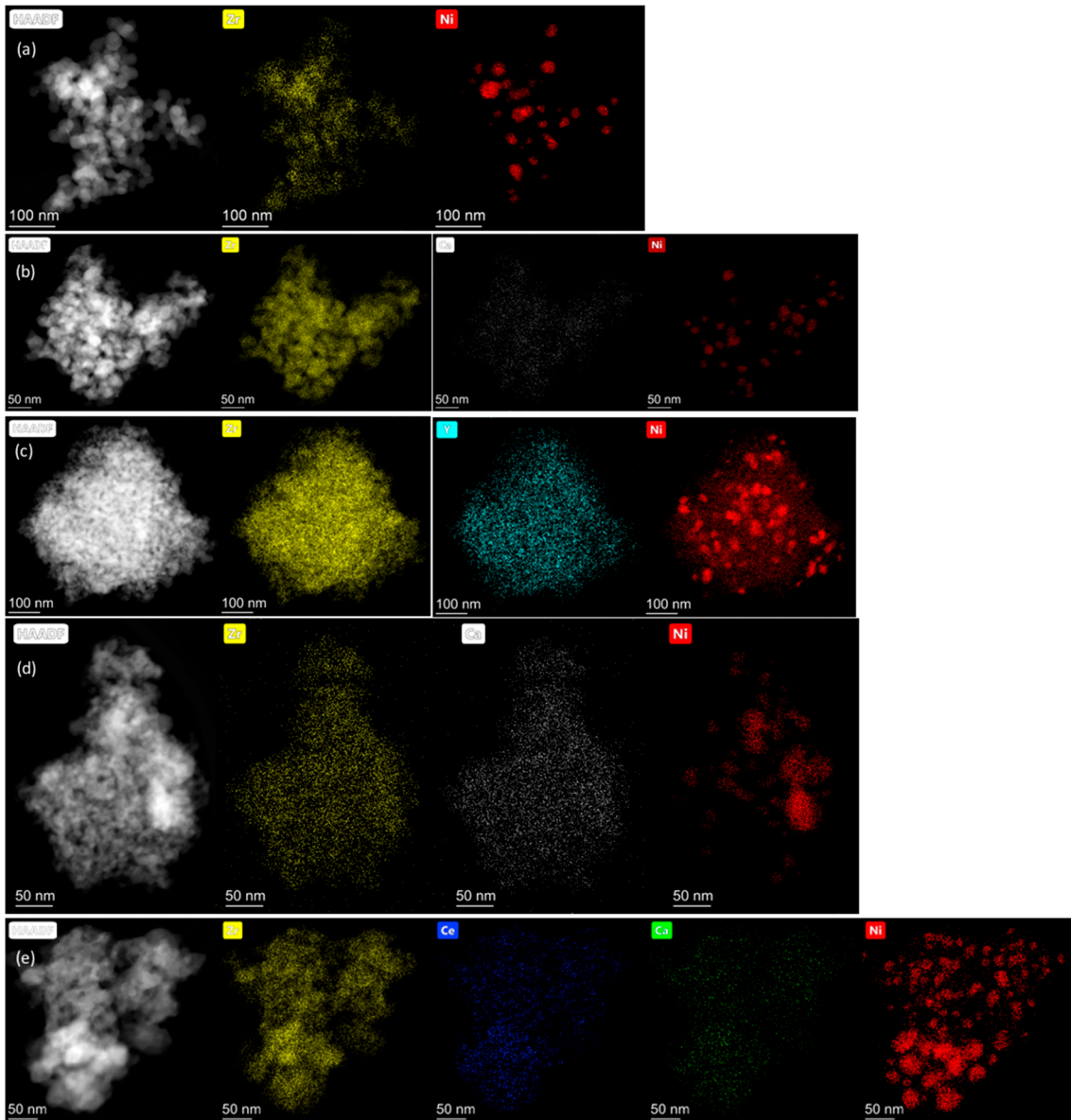


Figure S5. O 1s XPS spectra: (a) Samples without Ce; (b) Samples with Ce.



**Figure S6.** HAADF images and EDS maps for individual components: (a) NiZr, (b) Ni<sub>4</sub>CSZ, (c) Ni<sub>8</sub>YSZ, (d) Ni<sub>14</sub>CSZ and (e) NiCe<sub>4</sub>CSZ