



Article

Single-Walled Carbon Nanotube-Assisted Antibiotic Delivery and Imaging in *S. epidermidis* Strains Addressing Antibiotic Resistance

Afeefah Khazi-Syed ^{1,†}, Md Tanvir Hasan ¹, Elizabeth Campbell ¹, Roberto Gonzalez-Rodriguez ² and Anton V. Naumov ^{1,*}

¹ Department of Physics and Astronomy, Texas Christian University, TCU Box 298840, Fort Worth, TX 76129, USA; afeefahk@mit.edu (A.K.-S.); tanvir.hasan@tcu.edu (M.T.H.); e.sizemore@tcu.edu (E.C.)

² Department of Chemistry and Biochemistry, Texas Christian University, TCU Box 298860, Fort Worth, TX 76129, USA; r.gonzalezrodriguez@tcu.edu

* Correspondence: a.naumov@tcu.edu

† Current address: Massachusetts Institute of Technology, Cambridge, MA 02139, USA.

Supporting Information

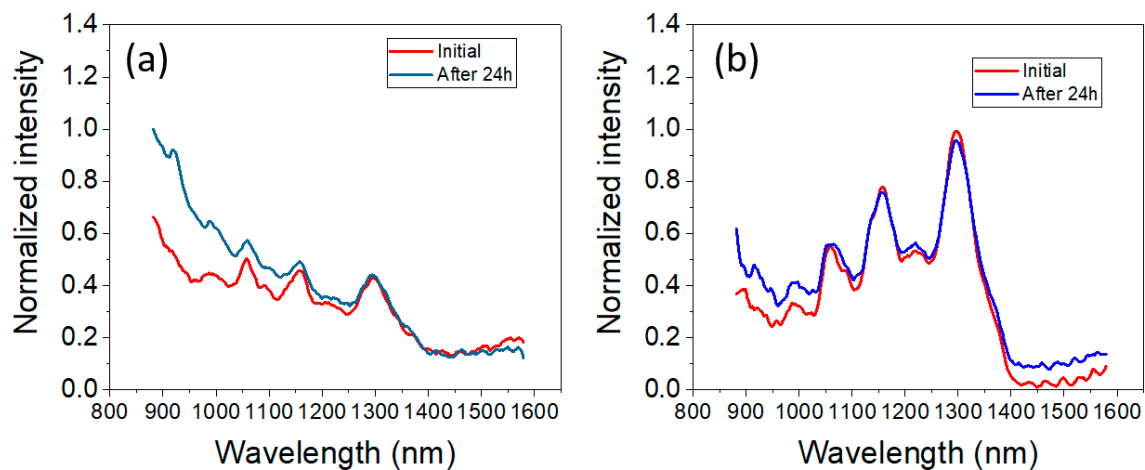


Figure S1. Fluorescence spectra of (a) SWCNTs/Doxycycline and (b) SWCNTs/Methicillin suspensions as prepared (red line) and a 24 h after (blue line)

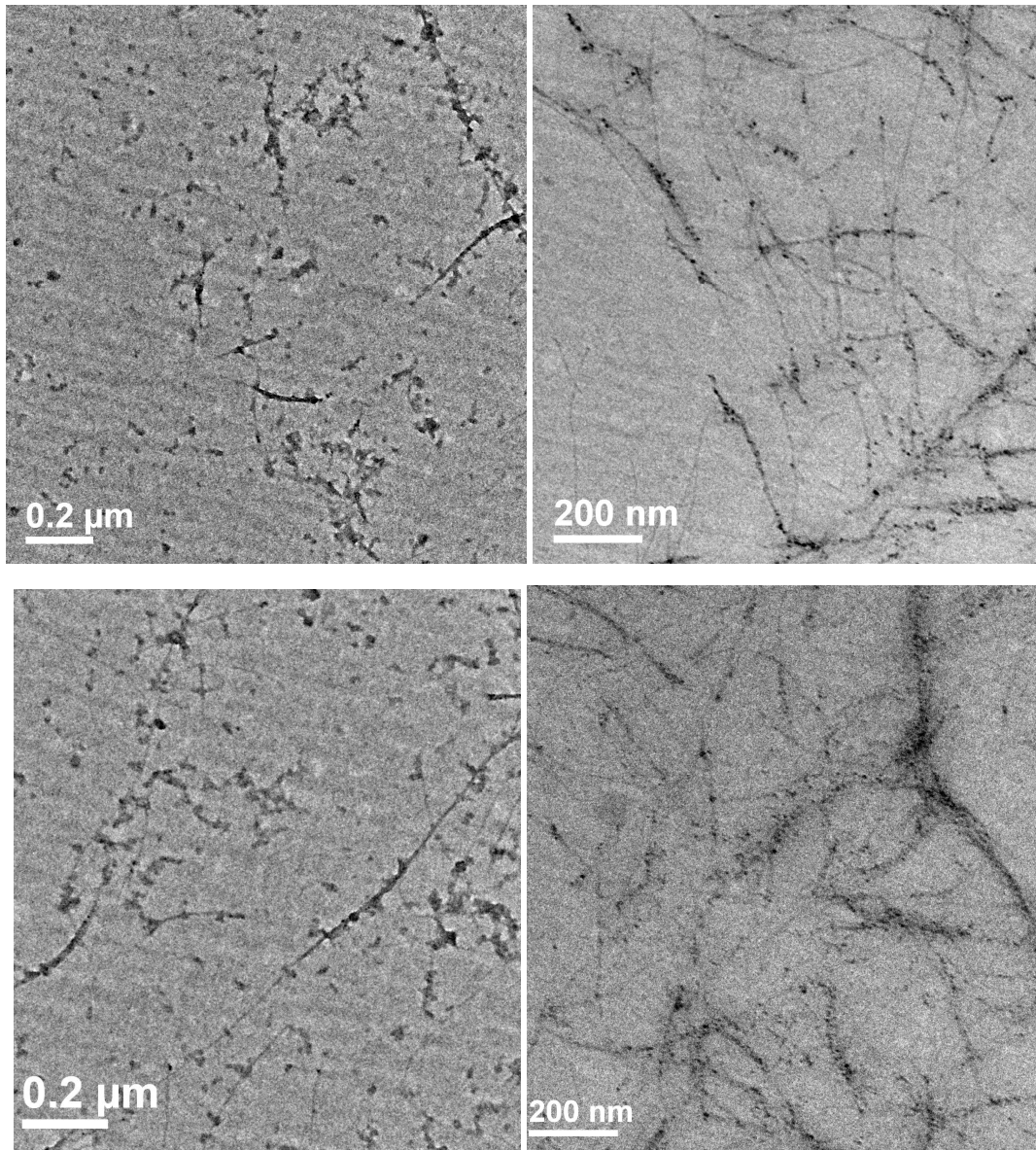


Figure S2. TEM images of SWCNTs dispersed with doxycycline (left panel) and methicillin (right panel) showing antibiotic coating on nanotubes.

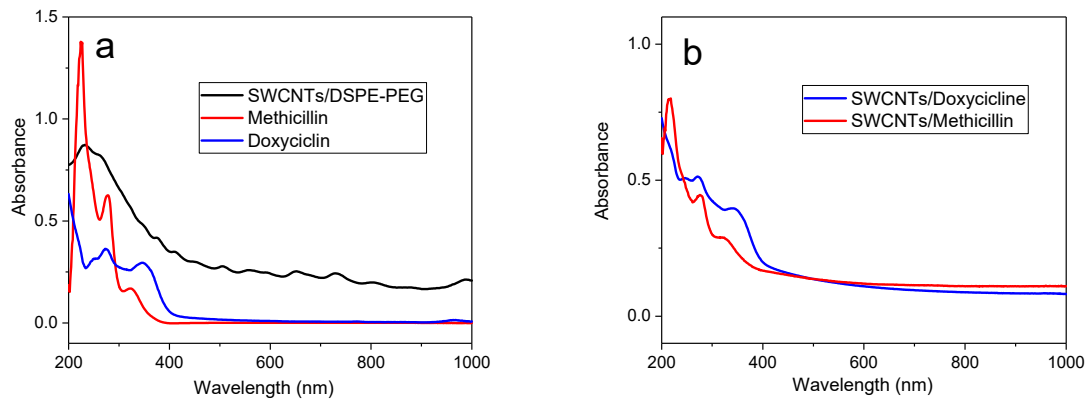


Figure S3. (a) Absorption spectra of SWCNTs/DSPE-PEG 5000 and antibiotics alone. (b) Absorption spectra of complexed SWCNTs and antibiotics.

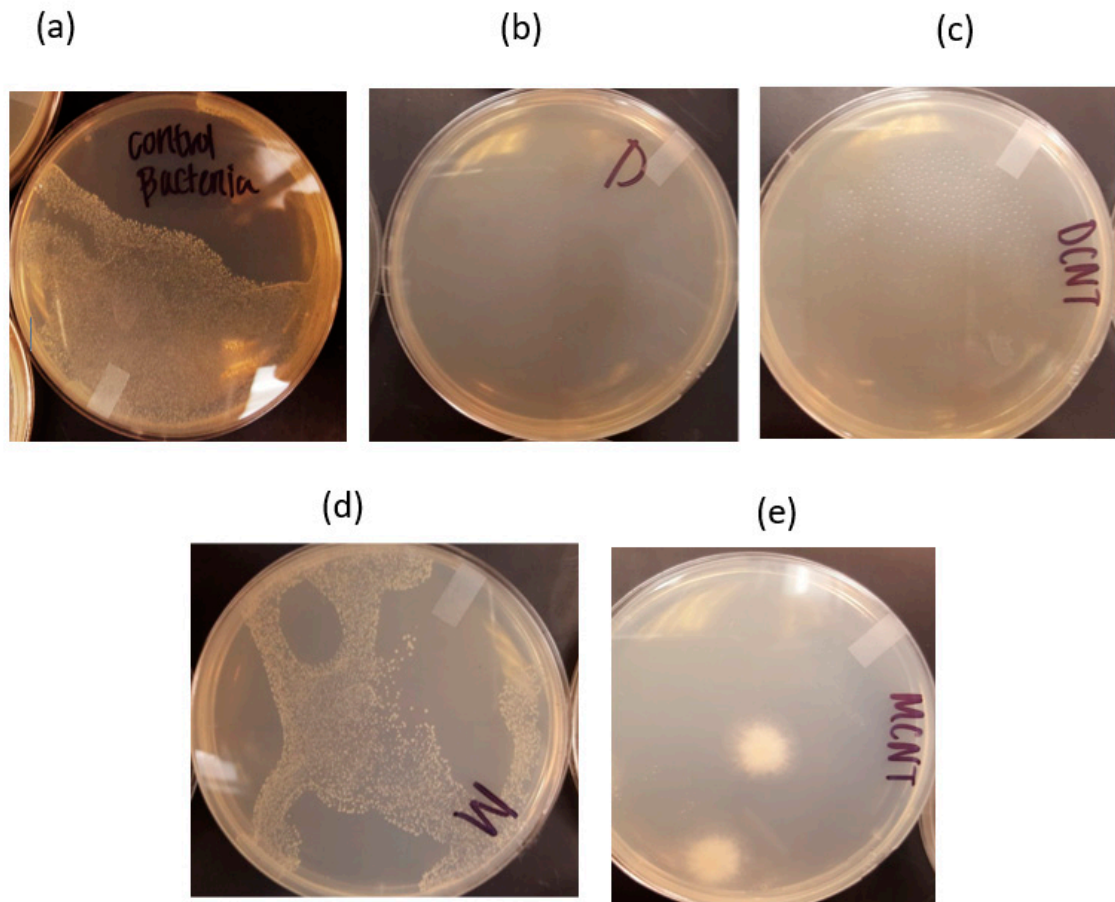


Figure S4 – Petri dish pictures for Colony Formation Unit Assay: (a) *S. epidermidis* control (b) *S. epidermidis* treated with Doxycycline (c) *S. epidermidis* treated with Doxycycline-SWCNT dispersion (d) *S. epidermidis* treated with Methicillin (e) *S. epidermidis* treated with Methicillin-SWCNT dispersion