

# Portable Chemiluminescence-Based Lateral Flow Assay Platform for the Detection of Cortisol in Human Serum

Hyun Tae Kim, Enjian Jin and Min-Ho Lee \*

School of Integrative Engineering, Chung-Ang University, 84 Heukseok-ro, Dongjak-gu, Seoul 06974, Korea; secondbean@naver.com (H.T.K.); enjian0830@naver.com (E.J.)

\* Correspondence: mhlee7@cau.ac.kr

## Supplementary

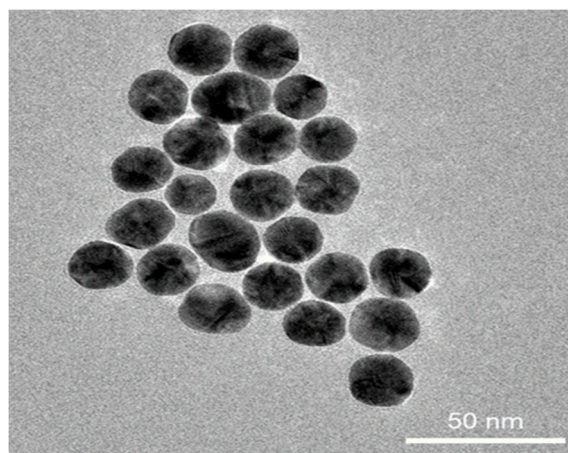


Figure S1. FE-TEM image of the synthesized AuNPs.

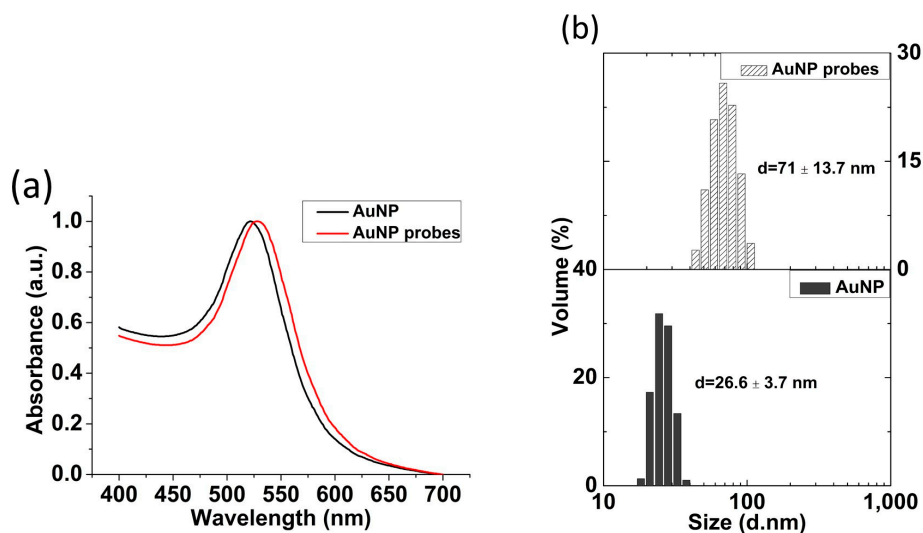


Figure S2. Characterization of the AuNP probes. Analysis (a) of the absorbance peak shift, and (b) of the hydrodynamic diameters of the AuNPs and AuNP probes.