

Supporting Information

# Glucose Incorporated Graphite Matrix for Electroanalysis of Trimethoprim

Rakesh R. Sawkar <sup>1</sup>, Mahesh M. Shanbhag <sup>2</sup>, Suresh M. Tuwar <sup>1,\*</sup>, Ravindra S. Veerapur <sup>3</sup> and Nagaraj P. Shetti <sup>4,5,\*</sup>

<sup>1</sup> Department of Chemistry, Karnatak Science College, Dharwad 580001, India

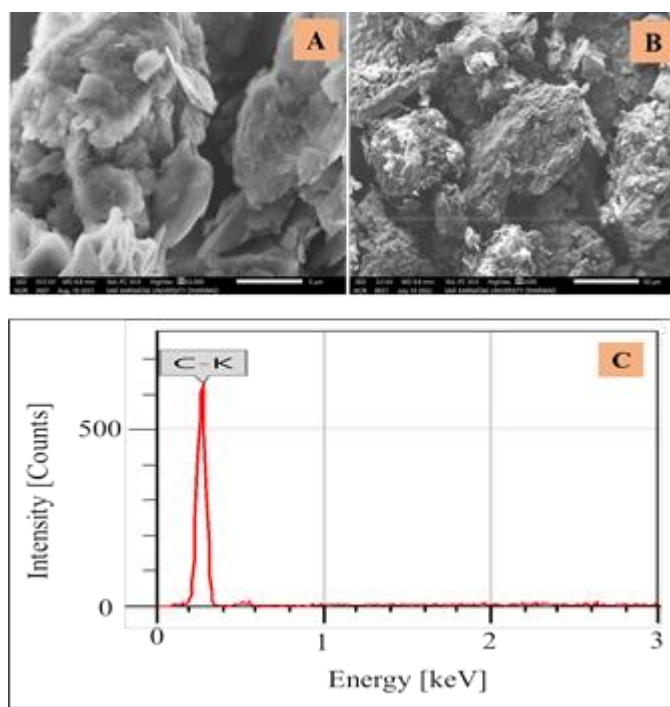
<sup>2</sup> Department of Chemistry, K.L.E. Institute of Technology, Hubballi 580027, India

<sup>3</sup> Department of Metallurgy & Materials Engineering, Malawi Institute of Technology, Malawi University of Science and Technology, Limbe 5196, Malawi

<sup>4</sup> Department of Chemistry, School of Advanced Sciences, KLE Technological University, Vidyanagar, Hubballi 580031, India

<sup>5</sup> University Center for Research & Development (UCRD), Chandigarh University, Mohali 140413, India

\* Correspondence: tuwarsm@kscd.ac.in (S.M.T.); npshetti@kletech.ac.in (N.P.S.)



**Figure S1.** (A) SEM image of CPE, (B) SEM EDS image of G-CPE, (C) EDS of CPE.

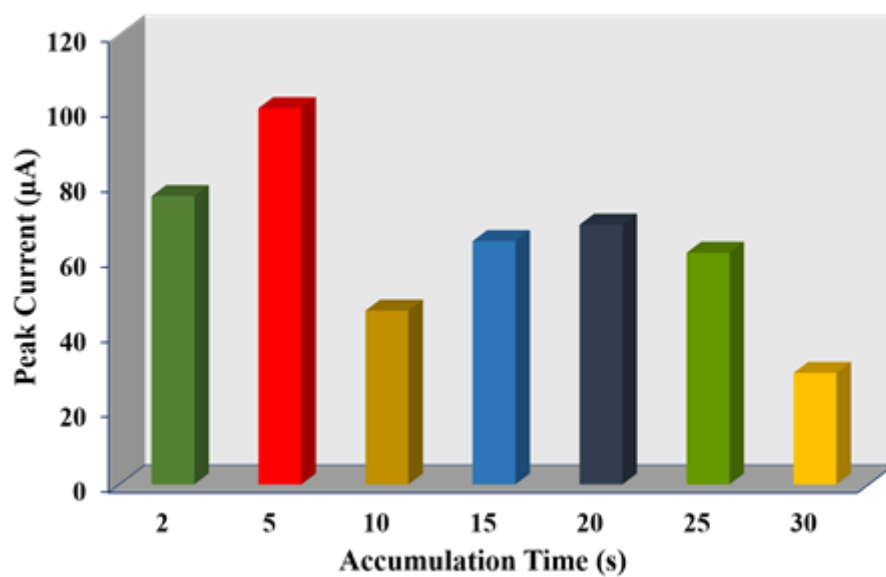


Figure S2. Accumulation time effect.

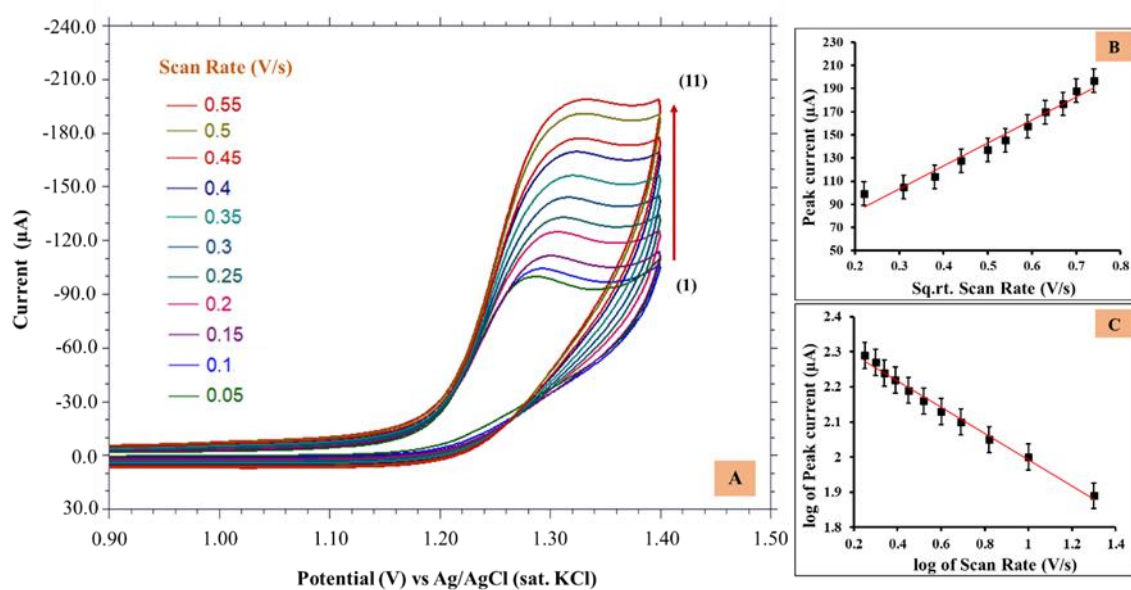


Figure S3. (A) Cyclic voltammograms for varying scan rates from 0.05 mV/s – 0.55 mV/s; (B) Plot of peak current vs square root of scan rate; (C) Plot log (peak current) vs log (scan rate).

Table S1. Calibration characteristics.

Parameter	Observation
Linearity range	0.9 to 100 $\mu$ M
Slope value	0.709
Intercept value	3.137
Regression co-efficient	0.984
LOD ( $10^{-8}$ M)	2.06
LOQ ( $10^{-8}$ M)	6.89

**Table S2.** Water sample analysis.

Water sample	Added ( $10^{-5}$ M)	Obtained <sup>a</sup> ( $10^{-5}$ M)	Recovery (%)
1	0.8	0.78	97.59
2	1.0	0.98	98.08

<sup>a</sup>(Average of three determinations).