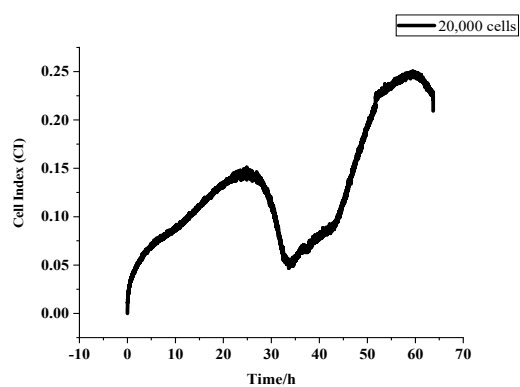
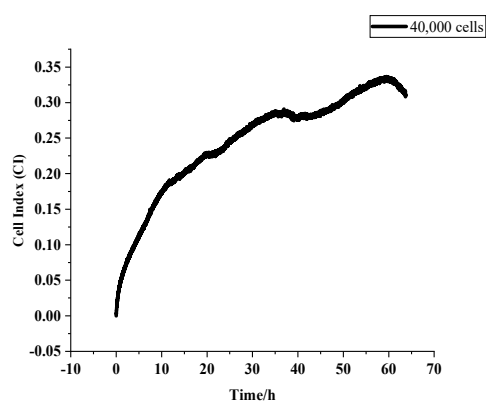


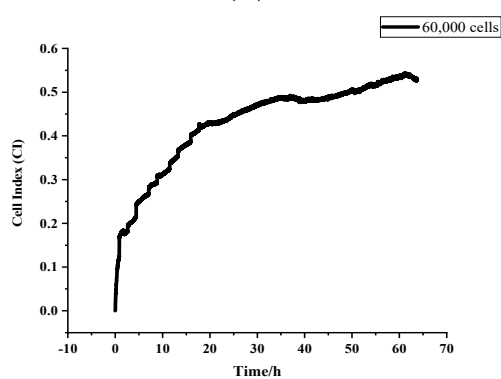
Supplementary Figures



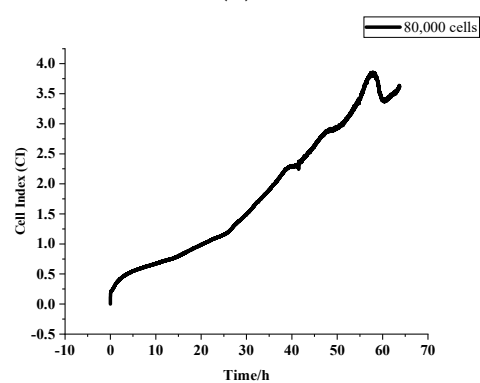
(A)



(B)

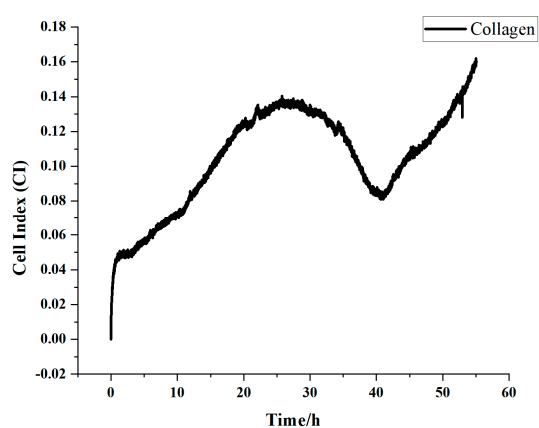


(C)

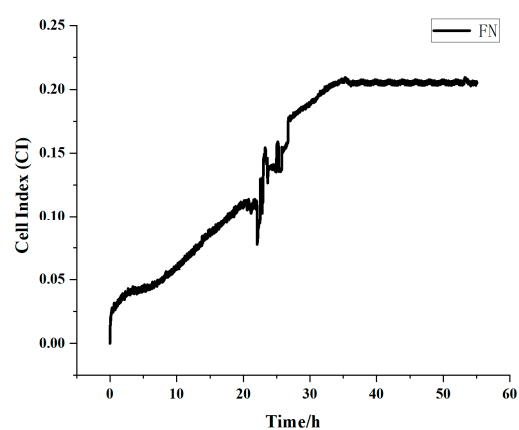


(D)

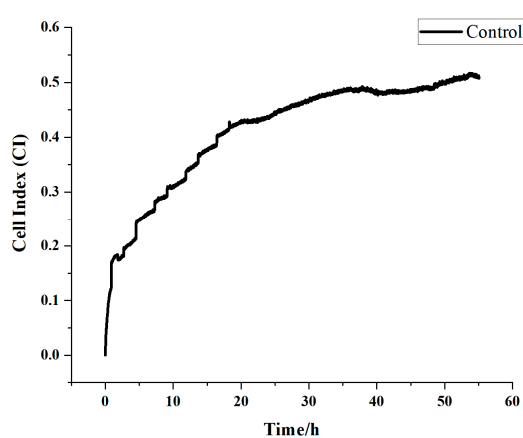
Figure S1. Comparison of cell indices at different cell densities (Subplot). (A) Cell index plot for 20,000 cells; (B) Cell index plot for 40,000 cells; (C) Cell index plot for 60,000 cells; (D) Cell index plot for 80,000 cells.



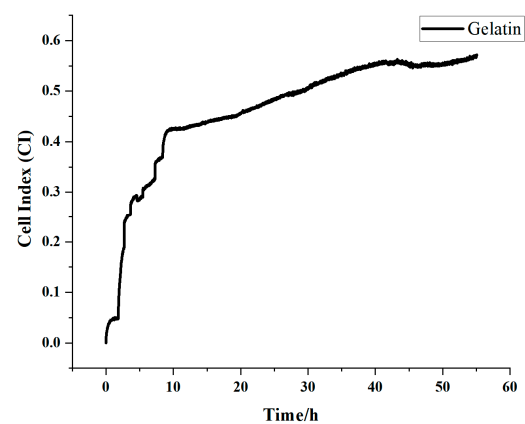
(A)



(B)

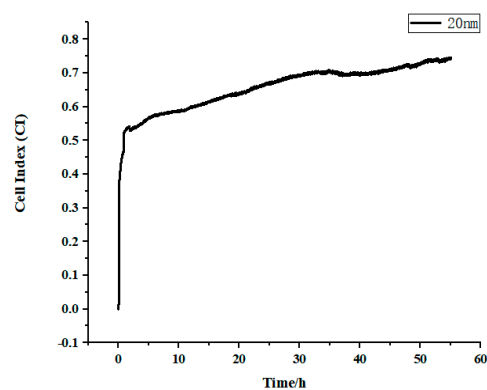


(C)

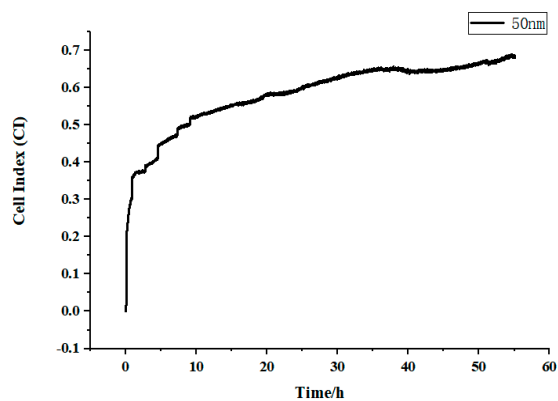


(D)

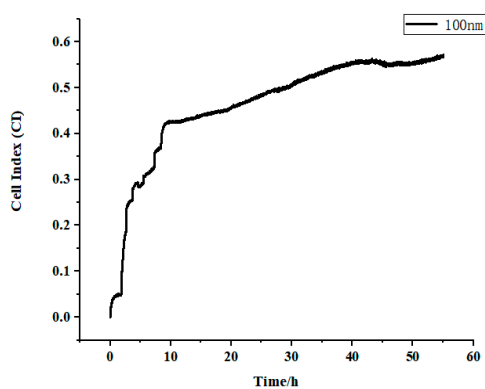
Figure S2. Comparison of cell indices under different chip modification schemes (Subplot). (A) Cell index plot for collagen modification; (B) Cell index plot for FN modification; (C) Cell index plot for bare gold electrodes; (D) Cell index plot for gelatin modification.



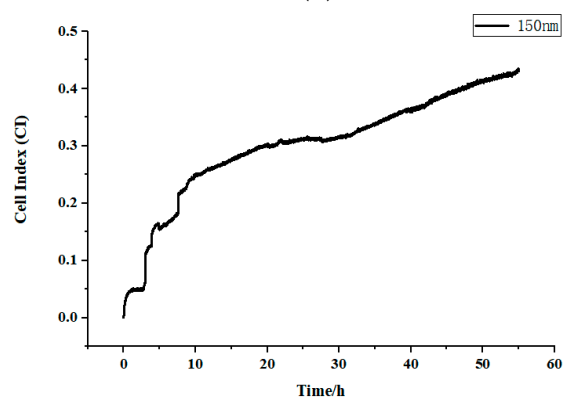
(A)



(B)



(C)



(D)

Figure S3. Comparison of cell indices at different chip thicknesses (Subplot). (A) Cell index plot at 20nm thickness; (B) Cell index plot at 50nm thickness; (C) Cell index plot at 100nm thickness; (D) Cell index plot at 150nm thickness.