

# Lateral flow immunoassay for rapid detection of grapevine leafroll-associated virus

Nadezhda A. Byzova<sup>1</sup>, Svetlana V. Vinogradova<sup>2</sup>, Elena V. Porotikova<sup>2</sup>, Yuliana D. Terechova<sup>2</sup>, Anatoly V. Zherdev<sup>1</sup>, Boris B. Dzantiev<sup>1,\*</sup>

<sup>1</sup>A.N. Bach Institute of Biochemistry, Research Center of Biotechnology of the Russian Academy of Sciences, Leninsky prospect 33, Moscow, 119071 Russia

<sup>2</sup>Institute of Bioengineering, Research Center of Biotechnology of the Russian Academy of Sciences, Leninsky prospect 33, Moscow, 119071 Russia

\* Correspondence: dzantiev@inbi.ras.ru; Tel.: +7-495-954-3142

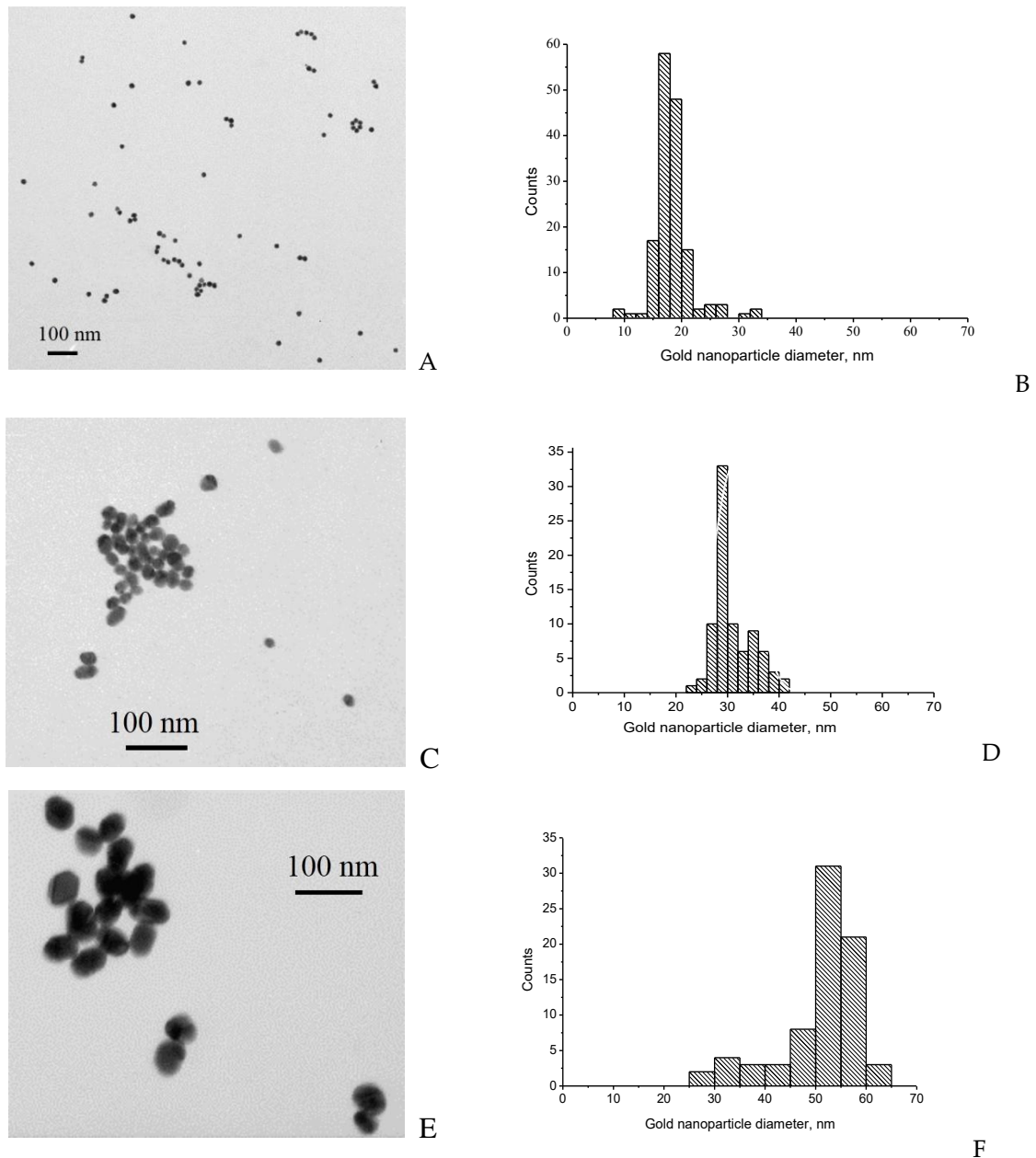


Figure S1. Transmission electron microscopy of GNPs: images of GNPs (A, C, E) and histograms (B, D, F) of GNPs diameters (n = 93-153). The mean diameters are 18.5 ± 3.3 nm (A, B), 28.3 ± 3.3 nm (C, D), and 51.0 ± 7.9 nm (E, F).