

Supplementary Information

Engineering of the CHAPk Staphylococcal Phage Endolysin to Enhance Antibacterial Activity against Stationary-Phase Cells (Supplementary Information)

Sara Arroyo-Moreno ¹, Máire Begley ^{1,2}, Kornelia Dembicka ¹ and Aidan Coffey ^{1,2,*}

- ¹ Department of Biological Sciences, Munster Technological University, T12 P928 Cork, Ireland; sara.arroyo-moreno@mycit.ie (S.A.-M.); maire.begley@cit.ie (M.B.); kornelia.dembicka@mycit.ie (K.D.)
² APC Microbiome Institute, University College, T12 YT20 Cork, Ireland
 * Correspondence: aidan.coffey@cit.ie; Tel.: +353-214-335-486

```

ATG GCT AAG ACT CAA GCA GAA ATA AAT AAA CGT TTA GAT GCT TAT
M A K T Q A E I N K R L D A Y
GCA AAA GGA ACA GTA GAT AGC CCT TAC AGA GTT AAA AAA GCT ACA
A K G T V D S P Y R V K K A T
AGT TAT GAC CCA TCA TTT GGT GTA ATG GAA GCA GGA GCC ATT GAT
S Y D P S F G V M E A G A I D
GCA GAT GGT TAC TAT CAC GCT CAG TGT CAA GAC CTT ATT ACA GAC
A D G Y Y H A Q C Q D L I T D
TAT GTT TTA TGG TTA ACA GAT AAT AAA GTT AGA ACT TGG GGT AAT
Y V L W L T D N K V R T W G N
GCT AAA GAC CAA ATT AAA CAG AGT TAT GGT ACT GGA TTT AAA ATA
A K D Q I K Q S Y G T G F K I
CAT GAA AAT AAA CCT TCT ACT GTA CCT AAA AAA GGT TGG ATT GCG
H E N K P S T V P K K G W I A
GTA TTT ACA TCC GGT AGT TAT GAA CAG TGG GGT CAC ATA GGT ATT
V F T S G S Y E Q W G H I G I
GTA TAT GAT GGA GGT AAT ACT TCT ACA TTT ACT ATT TTA GAG CAA
V Y D G G N T S T F T I L E Q
AAC TGG AAT GGT TAT GCT AAT AAA AAA CCT ACA AAA CGT GTA GAT
N W N G Y A N K K P T K R V D
AAT TAT TAC GGA TTA ACT CAC TTC ATT GAA ATA CCT GTA AAA GCA
N Y Y G L T H F I E I P V K A
ATG GTT AAT TCA TTT TCA AAT TCA ACT GCC CAA GAT CCA ATG CCT
M V N S F S N S T A Q D P M P
TTC TTA AAG AGC GCA GGA TAT GGA AAA GCA GGT GGT ACA GTA ACT
F L K S A G Y G K A G G T V T
CCA ACG CCG AAT ACA GGT TGG AAA ACA AAC AAA TAT GGC ACA CTA
P T P N T G W K T N K Y G T L
TAT AAA TCA GAG TCA GCT AGC TTC ACA CCT AAT ACA GAT ATA ATA
Y K S E S A S F T P N T D I I
ACA AGA ACG ACT GGT CCA TTT AGA AGC ATG CCG CAG TCA GGA GTC
T R T T G P F R S M P Q S G V
TTA AAA GCA GGT CAA ACA ATT CAT TAT GAT GAA GTG ATG AAA CAA
L K A G Q T I H Y D E V M K Q
GAC GGT CAT GTT TGG GTA GGT TAT ACA GGT AAC AGT GGC CAA CGT
D G H V V V G Y T G N S G Q R
ATT TAC TTG CCT GTA AGA ACA TGG AAT AAA TCT ACT AAT ACT TTA
I Y L P V R T W N K S T N T L
GGT GTT CTT TGG GGA ACT ATA AAG CTC GAG CAC CAC CAC CAC CAC
G V L W G T I K L E H H H H H
CAC
H
  
```

Figure S1. Sequence of the chimeric protein CHAPk-SH3blys. Red sequence corresponds to CHAPk, blue sequence corresponds to the SH3b cell-binding domain from lysostaphin, and purple sequence represents the His-tag region.

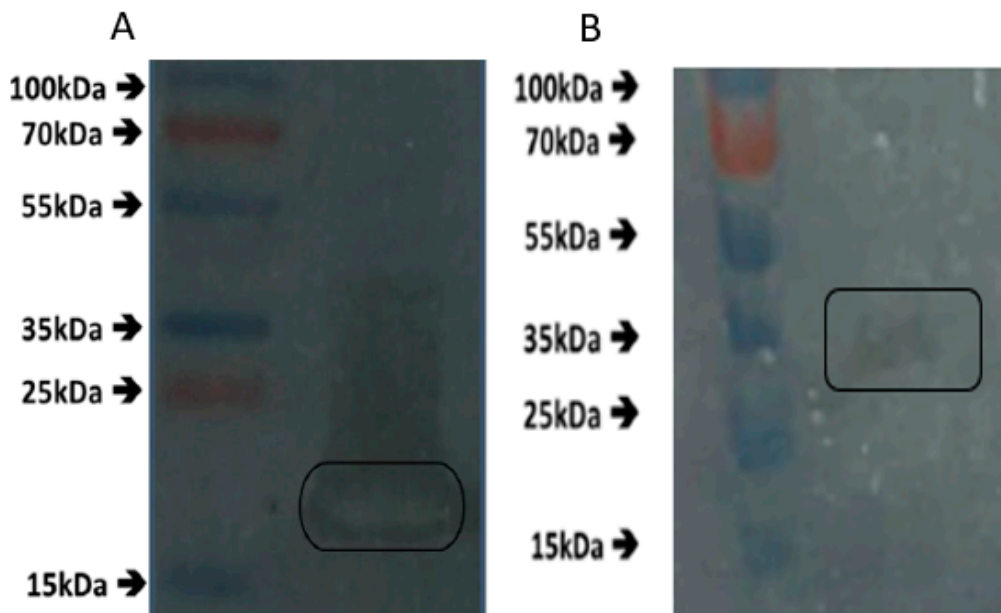


Figure S2. Zymogram using heat inactivated *S. aureus* DPC5246 cells, showing the lytic activity of; (A) CHAPk, having a band of clearing of approximately 20 KDa which corresponds to the predicted molecular mass of 18.6 kDa; (B) CHAPK-SH3blys, having a band of clearing of approximately 35 KDa which corresponds to the predicted molecular mass of 33.6 kDa.

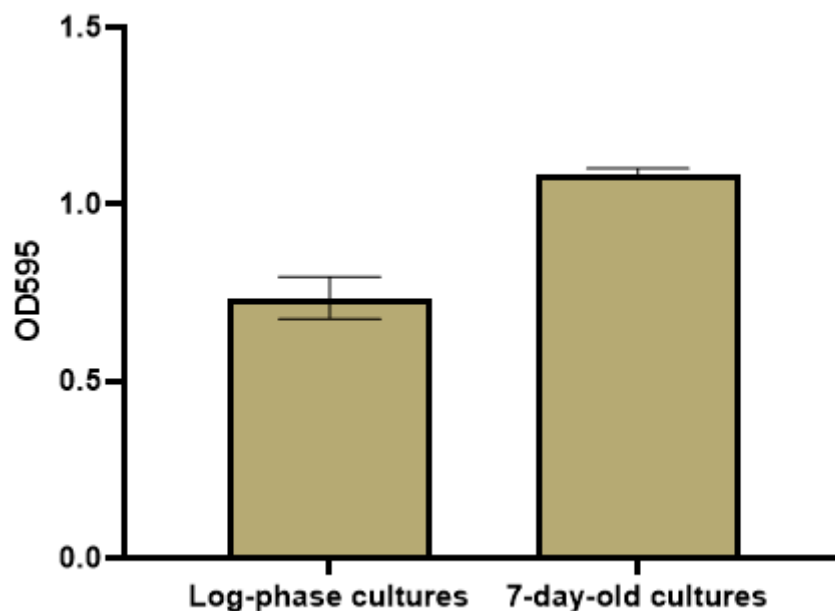


Figure S3. Density of biofilm cultivated from log-phase culture and 7-day-old culture. OD₅₉₅ readings are the average of triplicates plus/minus their standard deviation. Biofilms were cultivated at 37°C during 16h.

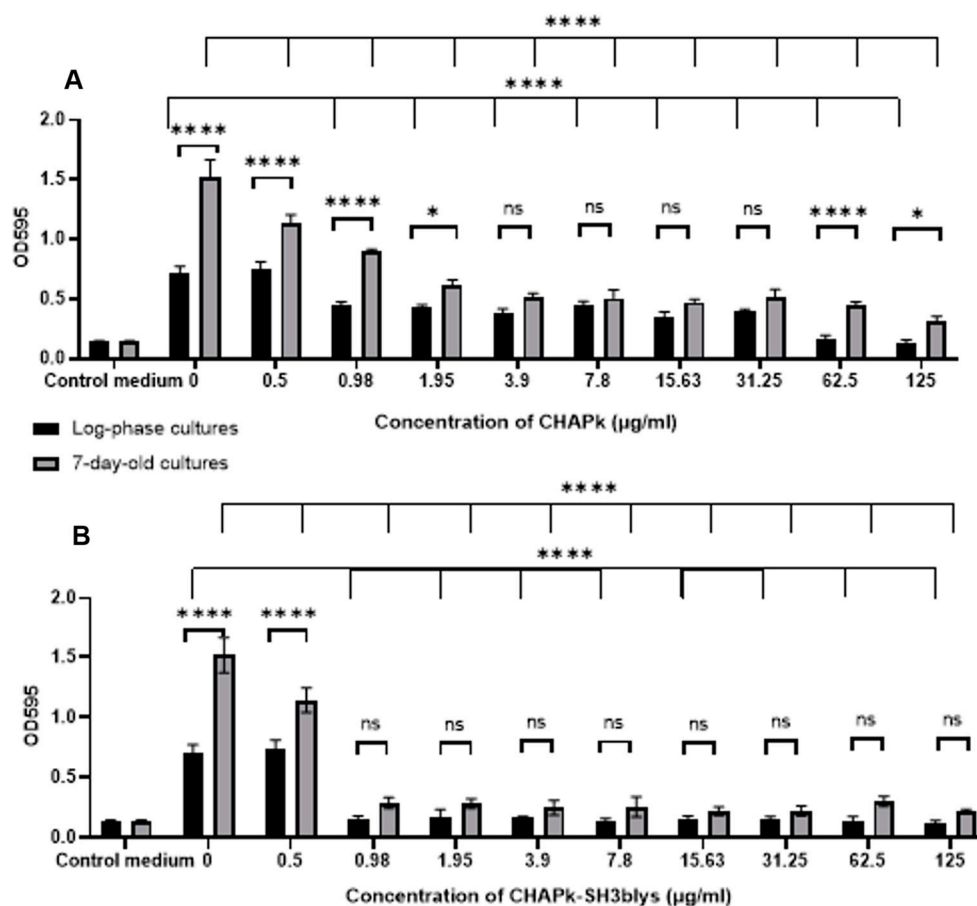


Figure S4. Biofilm prevention assay using concentrations of (A) CHAPk or (B) CHAPk-SH3bllys ranging from 0.5 to 125 µg/ml. OD₅₉₅ readings are the average of triplicates plus/minus their standard deviation. p-values <0.0001 are represented by ****. No significant statistical differences are represented by ns. p-values comparing concentrations of CHAPk (between biofilms from log-phase and 7-day-old cultures) 1.95 and 125 represented by * were 0.022 and 0.0244, respectively.

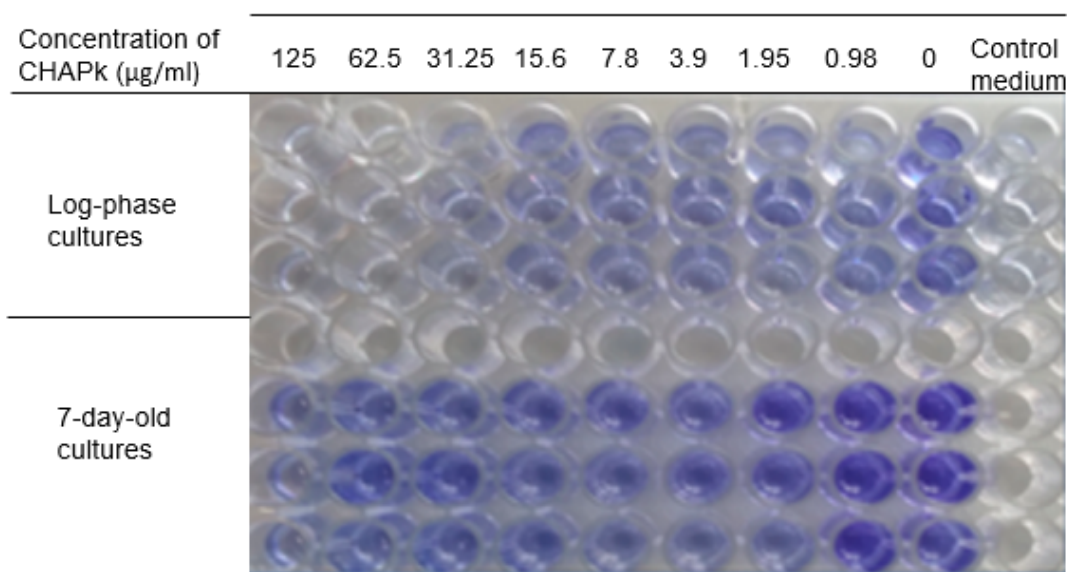


Figure S5. Biofilm prevention assay using concentrations of CHAPk ranging from 125 to 0.98 µg/ml. Visual representation of the 96-well plates after treatment with crystal violet.

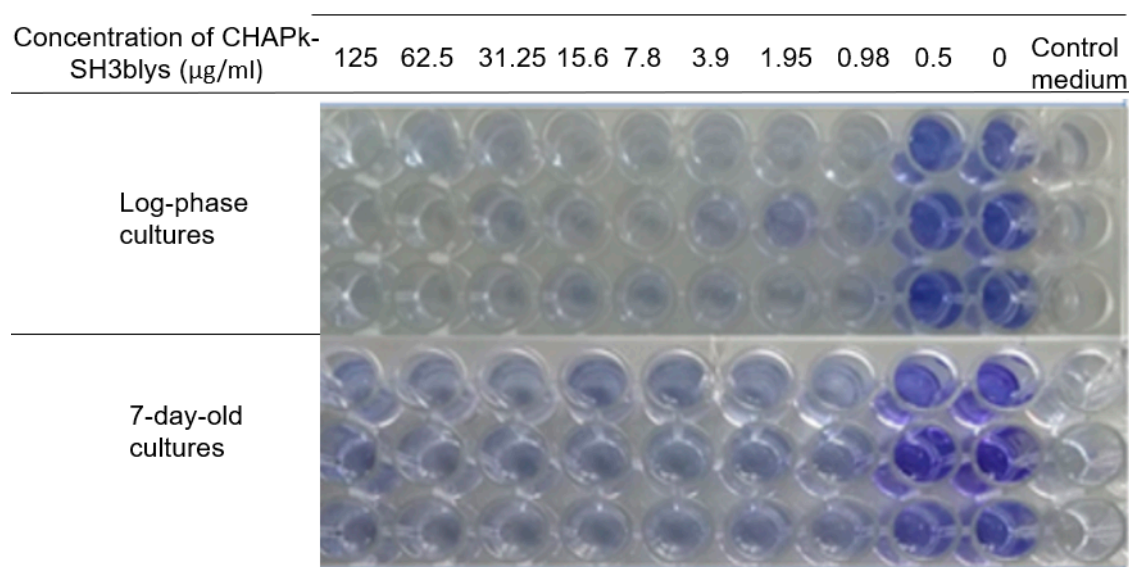


Figure S6. Biofilm prevention assay using concentrations of CHAPk-SH3blys ranging from 0.5 to 125 $\mu\text{g/ml}$. Visual representation of the 96-well plates after treatment with crystal violet.

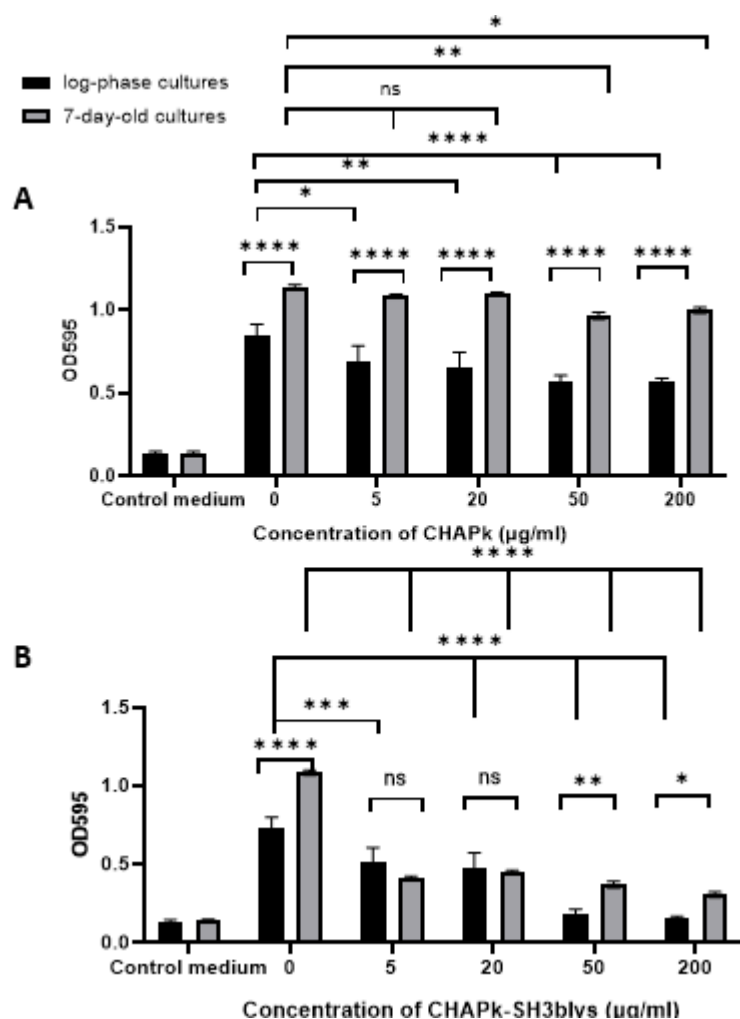


Figure S7. Biofilm disruption assay using *S. aureus* biofilms formed by cells in stationary and exponential phase. Concentrations of (A) CHAPk or (B) CHAPk-SH3blys, from 5 to 200 µg/ml, were used to disrupt biofilms. The disruption was determined by OD readings at 595nm. All readings are the average of triplicates plus/minus their standard deviation. P-values <0.0001 are represented by ****. No significant statistical differences are represented by ns. P-values comparing of untreated biofilm (formed from log-phase cultures) with concentrations of CHAPk of 5 and 20 µg/ml were 0.0136 and 0.011, respectively. P-values comparing untreated biofilm (formed from 7-day-old cultures) with concentrations of CHAPk of 50 and 200 µg/ml were 0.0060 and 0.043, respectively. P-value comparing untreated biofilm (formed from log-phase cultures) with a concentration of CHAPk-SH3blys of 5 µg/ml was 0.0002. P-values comparing CHAPk concentrations of 50 and 200 µg/ml (between biofilms from log-phase and 7-day-old cultures) were 0.006 and 0.043, respectively. P-values CHAPk-SH3blys concentrations of 50 and 200 were (between biofilms from log-phase and 7-day-old cultures) 0.0015 and 0.018, respectively.

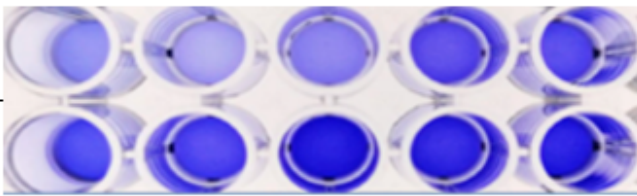
Concentration of CHAPk ($\mu\text{g/ml}$)	200	50	20	5	0
Log-phase cultures					
7-day-old cultures					

Figure S8. Biofilm disruption assay using *S. aureus* biofilms formed by cells in log-phase and 7-day-old cultures. Concentrations of CHAPk from 5 to 200 $\mu\text{g/ml}$, were used to disrupt biofilms. Visual representation of the 96-well plates after treatment with crystal violet.

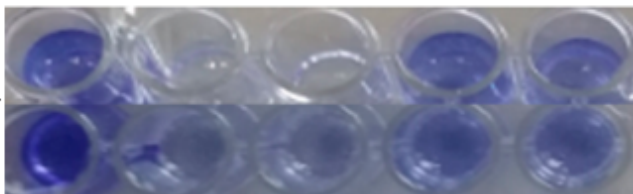
Concentration of CHAPk-SH3blys ($\mu\text{g/ml}$)	0	200	50	20	5
Log-phase cultures					
7-day-old cultures					

Figure S9. Biofilm disruption assay using *S. aureus* biofilms formed by cells in log-phase and 7-day-old cultures. Concentrations of CHAPk-SH3blys from 5 to 200 $\mu\text{g/ml}$, were used to disrupt biofilms. Visual representation of the 96-well plates after treatment with crystal violet.