

Supplementary Figure S1:



Supplementary Figure 1. a: Closed highly modernized buildings of a large-scale farm with biosecurity.



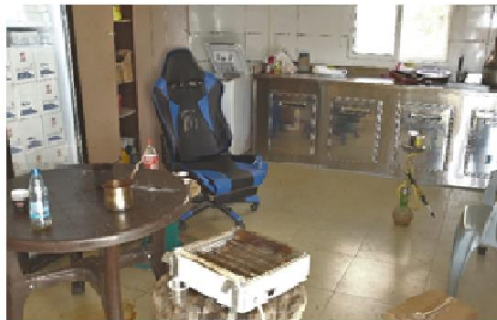
Supplementary figure 1. b: Simple small-scale farm with poor biosecurity.



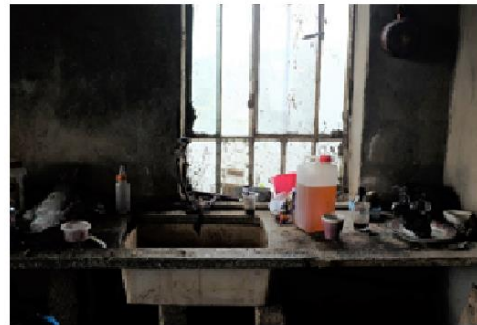
Supplementary Figure 1. c: Municipal dam, where among other things also dead animals are disposed of.



Supplementary Figure 1. d: Olive trees for which chicken manure is used as fertilizer.



Supplementary Figure 1. e: Staffroom with kitchen and toilet in a separate building next to one of the large-scale farms visited



Supplementary Figure 1. f: Sink without soap or towel in a staffroom, which is separated from the small-scale farm only by a door