

Supplementary Materials

Table S1: Quality control ranges for *B. fragilis* and *B. thetaiotaomicron*. *MIC range according to CLSI [28], **MIC range according to MICRONAUT MERLIN Diagnostika.

Antibiotics	<i>B. fragilis</i> ATCC 25285 (mg/L)	<i>B. thetaiotaomicron</i> ATCC 29741 (mg/L)
Penicillin G	8-32*	8-32*
Amoxicillin/clavulanic acid	0.25/0.125 - 1/0.5*	0.25/0.125 - 1/0.5*
Piperacillin/tazobactam	≤4/4**	2/4 - 16/4*
Meropenem	0.03 - 0.25*	0.06 - 0.5*
Imipenem	0.03 - 0.25*	0.25 - 1*
Ertapenem	0.06 - 0.5*	0.25 - 2**
Metronidazole	0.25 - 2*	0.5 - 4*
Moxifloxacin	0.125 - 0.5*	1 - 8*
Clindamycin	0.5 - 2*	2 - 8*
Doxycycline	-	2 - 8*
Tigecycline	0.06 - 0.5*	0.25 - 1*

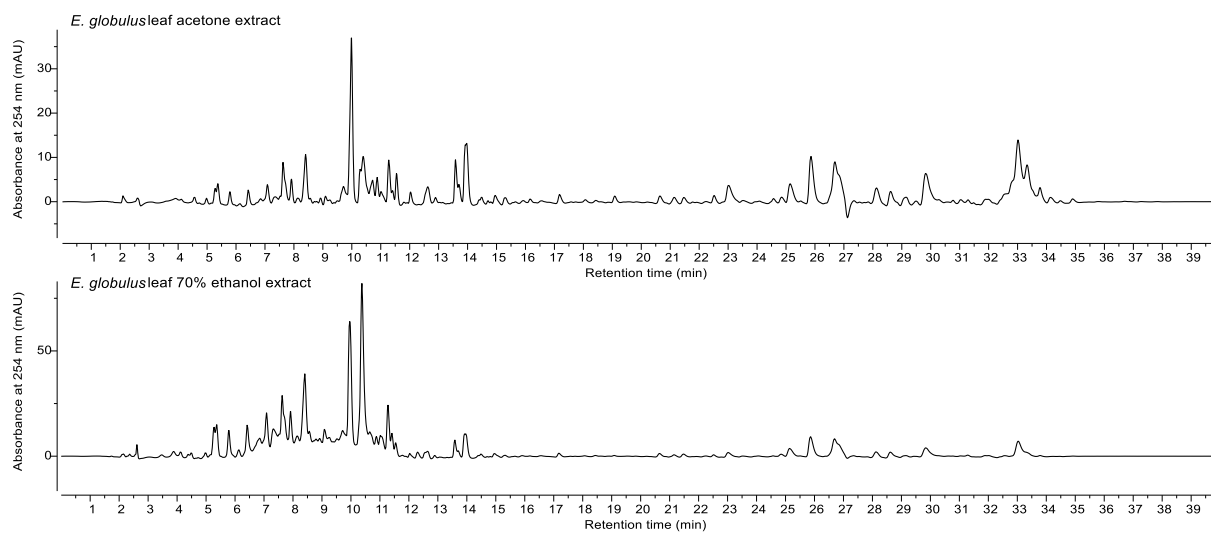


Figure S1: HPLC chromatograms (monitored at 254 nm) of *E. globulus* leaf acetone and 70% ethanol extracts.

Table S2: Peak list of the *E. globulus* leaf acetone extract chromatogram at 254 nm with a minimum area threshold of 0.5%.

Peak #	rt	Total Height %	Total Area %	Start time	End time	Peak #	rt	Total Height %	Total Area %	Start time	End time
1	5.277	1.24	0.65	5.184	5.317	25	14.956	0.72	0.71	14.862	15.169
2	5.371	1.64	1.02	5.317	5.497	26	17.175	0.78	0.70	17.049	17.389
3	5.790	1.11	0.67	5.671	5.917	27	20.648	0.69	0.81	20.495	20.961
4	6.424	1.29	0.82	6.324	6.570	28	21.135	0.58	0.66	20.968	21.341
5	7.084	1.44	1.02	6.924	7.210	29	21.475	0.54	0.57	21.341	21.695
6	7.630	2.88	2.16	7.550	7.817	30	22.514	0.66	0.59	22.401	22.701
7	7.917	1.84	1.02	7.823	8.023	31	23.014	1.38	2.08	22.848	23.401
8	8.403	3.77	3.02	8.237	8.523	32	25.141	1.56	2.36	25.001	25.700
9	9.716	1.22	1.42	9.563	9.850	33	25.860	3.82	4.65	25.700	26.160
10	9.983	13.33	10.10	9.850	10.130	34	26.687	3.85	9.76	26.400	27.114
11	10.283	2.77	1.37	10.190	10.316	35	27.340	1.29	2.29	27.127	27.474
12	10.396	3.82	4.50	10.316	10.590	36	27.534	1.10	1.17	27.474	27.634
13	10.716	1.93	1.99	10.590	10.803	37	27.694	1.02	0.84	27.634	27.753
14	10.876	2.19	1.47	10.803	10.956	38	27.840	1.05	1.24	27.753	27.933
15	11.010	1.04	1.05	10.956	11.183	39	28.127	2.17	4.80	27.933	28.460
16	11.276	3.66	2.60	11.183	11.370	40	28.613	1.93	3.91	28.460	28.953
17	11.410	1.17	0.67	11.370	11.476	41	29.133	1.09	2.04	28.953	29.340
18	11.543	2.60	1.59	11.476	11.690	42	29.480	0.46	0.62	29.340	29.640
19	12.029	1.00	0.64	11.956	12.223	43	29.826	2.48	4.14	29.640	30.240
20	12.623	1.39	1.60	12.396	12.776	44	33.019	3.57	4.55	32.846	33.213
21	13.583	3.56	2.25	13.483	13.663	45	33.333	2.04	2.51	33.213	33.599
22	13.702	1.58	1.04	13.663	13.816	46	33.779	0.90	0.78	33.659	33.972
23	13.922	4.85	2.21	13.816	13.936	25	14.956	0.72	0.71	14.862	15.169
24	13.969	5.00	3.36	13.936	14.162	26	17.175	0.78	0.70	17.049	17.389

Table S3: Peak list of the *E. globulus* leaf 70% ethanol extract chromatogram at 254 nm with a minimum area threshold of 0.5%.

Peak #	rt	Total Height %	Total Area %	Start time	End time	Peak #	rt	Total Height %	Total Area %	Start time	End time
1	5.273	2.92	1.82	5.167	5.313	19	10.879	1.40	1.10	10.806	10.952
2	5.367	3.22	2.32	5.313	5.493	20	11.019	1.62	2.06	10.952	11.186
3	5.787	2.66	1.83	5.673	5.920	21	11.279	4.98	3.75	11.186	11.366
4	6.420	3.08	2.68	6.273	6.593	22	11.412	2.19	1.47	11.366	11.492
5	6.846	1.46	2.40	6.593	6.926	23	11.546	1.31	0.89	11.492	11.666
6	7.086	3.95	3.91	6.926	7.206	24	12.652	0.77	1.04	12.459	12.772
7	7.320	2.15	3.15	7.206	7.473	25	13.585	1.50	0.88	13.505	13.672
8	7.526	1.52	0.80	7.473	7.546	26	13.919	2.42	1.22	13.819	13.939
9	7.626	5.42	5.94	7.546	7.826	27	13.965	2.45	1.80	13.939	14.158
10	7.913	3.61	2.67	7.826	8.033	28	23.017	0.48	0.75	22.870	23.390
11	8.146	0.93	0.96	8.033	8.233	29	25.143	0.83	1.37	24.997	25.697
12	8.406	7.20	7.48	8.233	8.526	30	25.863	2.05	2.80	25.703	26.170
13	8.559	1.17	0.71	8.526	8.666	31	26.690	1.89	4.66	26.410	27.130
14	9.086	1.24	0.78	9.013	9.186	32	28.129	0.61	0.92	27.943	28.463
15	9.713	1.11	1.44	9.579	9.853	33	28.616	0.59	0.90	28.469	28.949
16	9.959	12.57	11.91	9.853	10.132	34	29.843	0.89	1.69	29.643	30.256
17	10.379	16.78	17.91	10.206	10.599	35	33.029	1.35	1.97	32.835	33.282
18	10.652	1.68	2.00	10.599	10.806						

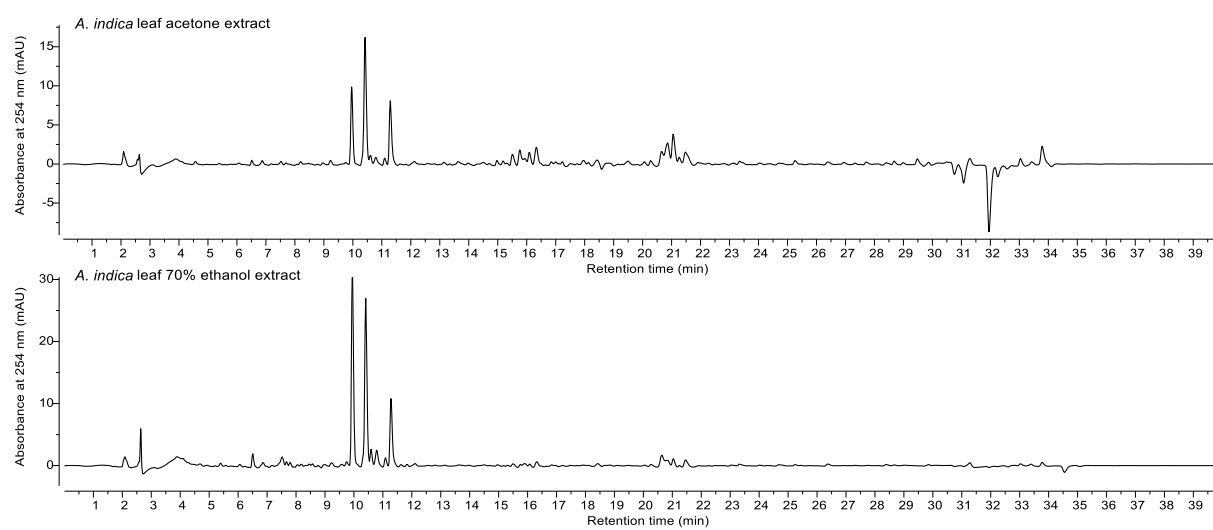


Figure S2: HPLC chromatograms (monitored at 254 nm) of *A. indica* leaf acetone and 70% ethanol extracts.

Table S4: Peak list the of the *A. indica* leaf acetone extract chromatogram at 254 nm with a minimum area threshold of 0.5%.

Peak #	rt	Total Height %	Total Area %	Start time	End time	Peak #	rt	Total Height %	Total Area %	Start time	End time
1	2.092	1.93	1.04	1.985	2.272	18	21.475	1.88	1.89	21.369	21.762
2	3.078	1.11	2.02	2.705	3.218	19	26.388	0.50	0.78	26.268	26.848
3	3.891	2.32	9.61	3.218	4.471	20	26.948	0.55	0.74	26.848	27.248
4	4.565	1.00	0.91	4.471	4.831	21	27.341	0.52	0.75	27.248	27.627
5	9.957	10.79	4.60	9.864	10.090	22	27.714	0.76	1.70	27.627	28.281
6	10.424	16.72	7.60	10.330	10.550	23	28.407	0.73	0.95	28.281	28.594
7	11.290	8.73	4.06	11.197	11.430	24	28.681	1.02	1.05	28.594	28.907
8	15.503	1.60	0.94	15.410	15.656	25	28.987	0.75	1.20	28.907	29.381
9	15.763	2.17	1.30	15.656	15.876	26	29.481	1.22	1.01	29.381	29.707
10	15.936	0.93	0.55	15.876	16.016	27	30.434	0.92	0.79	30.120	30.440
11	16.089	1.75	0.91	16.016	16.216	28	30.640	1.44	1.76	30.440	30.754
12	16.336	2.36	1.40	16.216	16.476	29	30.907	1.94	1.90	30.760	31.067
13	18.436	1.14	1.05	18.256	18.582	30	31.840	8.30	24.07	31.080	31.953
14	20.655	2.09	1.44	20.489	20.735	31	32.120	6.98	7.86	31.953	32.260
15	20.862	3.24	2.78	20.735	20.969	32	32.347	4.40	6.17	32.260	32.587
16	21.055	4.46	2.92	20.969	21.202	33	32.587	1.93	1.40	32.587	32.840
17	21.262	1.18	0.70	21.202	21.369	34	33.786	2.67	2.12	33.653	34.093

Table S5: Peak list of the *A. indica* leaf 70% ethanol extract chromatogram at 254 nm with a minimum area threshold of 0.5%.

Peak #	rt	Total Height %	Total Area %	Start time	End time	Peak #	rt	Total Height %	Total Area %	Start time	End time
1	2.087	1.67	2.16	1.974	2.261	14	10.593	2.17	1.52	10.533	10.679
2	2.634	6.01	2.65	2.594	2.687	15	10.786	2.46	2.68	10.686	10.993
3	3.061	0.76	2.60	2.721	3.207	16	11.086	1.43	1.18	11.006	11.186
4	3.887	1.88	9.80	3.207	4.054	17	11.279	10.53	9.06	11.193	11.406
5	4.094	1.47	2.17	4.054	4.254	18	16.318	0.83	0.91	16.198	16.438
6	4.254	0.65	0.91	4.254	4.554	19	20.638	1.92	2.82	20.478	20.751
7	6.507	2.23	1.73	6.427	6.640	20	20.838	1.10	1.73	20.751	20.951
8	6.860	0.73	0.79	6.687	6.967	21	21.031	1.34	1.46	20.951	21.178
9	7.520	1.31	1.54	7.346	7.613	22	21.457	1.16	1.71	21.337	21.724
10	9.000	0.42	0.61	8.873	9.140	23	31.276	0.70	1.06	31.063	31.429
11	9.219	0.57	0.62	9.140	9.353	24	33.775	0.64	0.78	33.649	33.989
12	9.946	31.76	25.72	9.853	10.073	25	34.735	0.67	2.15	34.555	35.075
13	10.406	25.59	21.64	10.319	10.533						

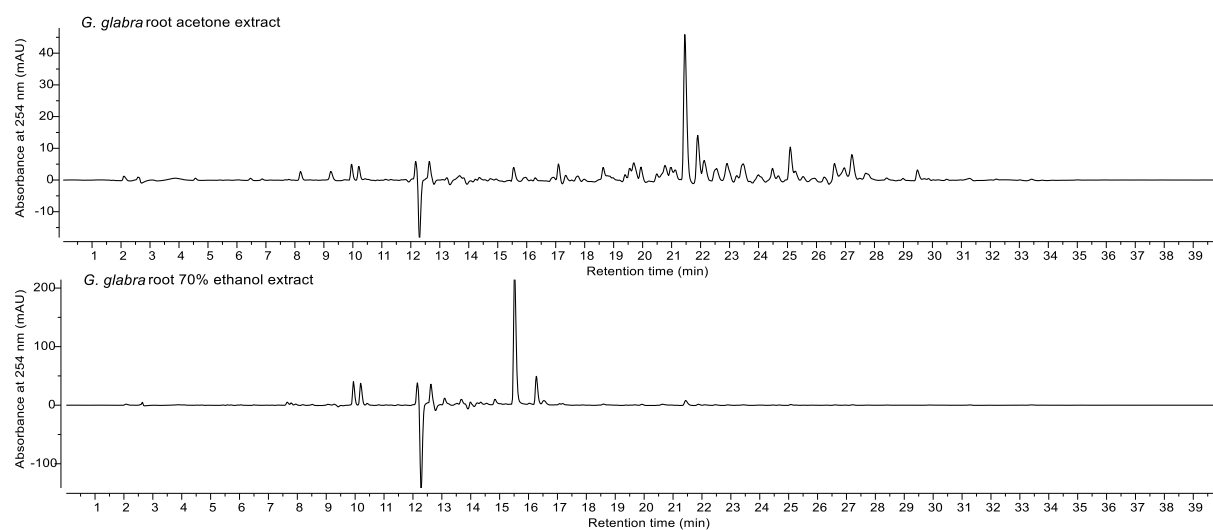


Figure S3: HPLC chromatograms (monitored at 254 nm) of *G. glabra* root acetone and 70% ethanol extracts.

Table S6: Peak list of the of the *G. glabra* root acetone extract chromatogram at 254 nm with a minimum area threshold of 0.5%.

Peak #	rt	Total Height %	Total Area %	Start time	End time	Peak #	rt	Total Height %	Total Area %	Start time	End time
1	12.070	2.12	0.88	11.930	12.076	20	16.289	1.47	1.55	16.216	16.436
2	12.183	4.81	3.86	12.076	12.296	21	16.436	1.09	1.03	16.436	16.622
3	12.636	6.07	11.98	12.296	12.796	22	16.622	0.91	0.70	16.622	16.776
4	12.903	4.30	4.77	12.796	13.003	23	16.902	0.95	1.09	16.776	17.009
5	13.003	4.22	3.64	13.003	13.163	24	17.095	1.88	1.22	17.009	17.229
6	13.236	4.20	4.05	13.163	13.349	25	17.342	0.74	0.66	17.229	17.629
7	13.676	3.97	8.98	13.349	13.783	26	19.695	0.88	0.58	19.615	19.848
8	13.816	3.67	2.99	13.783	13.943	27	19.942	1.04	0.59	19.855	20.088
9	14.023	3.22	3.44	13.943	14.143	28	20.768	0.88	0.65	20.575	20.895
10	14.223	3.20	2.61	14.143	14.296	29	21.455	11.81	7.78	21.335	21.668
11	14.363	3.22	3.67	14.296	14.516	30	21.901	3.85	2.63	21.768	22.035
12	14.516	2.87	2.14	14.516	14.656	31	22.121	1.72	1.41	22.035	22.328
13	14.743	2.78	3.23	14.656	14.876	32	22.548	1.00	0.98	22.381	22.748
14	14.936	2.58	3.02	14.876	15.102	33	22.915	1.45	1.33	22.748	23.134
15	15.102	2.26	1.43	15.102	15.222	34	23.474	1.29	1.20	23.321	23.654
16	15.316	2.09	2.77	15.222	15.469	35	25.094	2.39	1.35	24.988	25.214
17	15.549	2.98	3.58	15.469	15.769	36	26.621	1.62	1.34	26.434	26.767
18	15.896	1.81	2.92	15.769	16.089	37	26.954	1.14	1.31	26.767	27.087
19	16.136	1.42	0.95	16.089	16.216	38	27.220	2.09	1.70	27.087	27.420

Table S7: Peak list of the of the *G. glabra* root 70% ethanol extract chromatogram at 254 nm with a minimum area threshold of 0.5%.

Peak #	rt	Total Height %	Total Area %	Start time	End time	Peak #	rt	Total Height %	Total Area %	Start time	End time
1	9.944	4.47	2.62	9.851	10.091	8	13.677	1.24	1.33	13.590	13.890
2	10.191	4.21	2.69	10.097	10.344	9	13.983	1.17	0.78	13.910	14.117
3	12.190	12.39	10.74	12.057	12.270	10	14.836	0.99	0.66	14.743	14.990
4	12.410	14.68	20.32	12.284	12.537	11	15.516	25.28	17.42	15.416	15.690
5	12.617	15.42	20.37	12.537	12.777	12	16.270	5.38	3.55	16.176	16.430
6	12.777	7.80	11.06	12.777	13.010	13	16.530	0.70	0.66	16.430	16.723
7	13.083	5.32	6.98	13.010	13.337	14	21.435	0.95	0.81	21.315	21.642

Table S8: Peak list of the of the *R. palmatum* root extract chromatogram at 254 nm with a minimum area threshold of 0.5%. The HPLC chromatogram (monitored at 254 nm), the respective total ion current (TIC) ESI-MS (–) and the extracted ESI-MS (–) spectrum of the *R. palmatum* root sample are depicted in the main article (Figure 2).

Peak #	rt	Total Height %	Total Area %	Start time	End time	Peak #	rt	Total Height %	Total Area %	Start time	End time
1	4.898	734	1.08	0.97	4.778	16	12.117	1817	1.52	1.12	12.05
2	5.558	833	0.92	0.87	5.431	17	12.216	1832	1.73	2	12.163
3	8.277	1241	2.63	2.48	8.191	18	13.956	2093	8.35	9.27	13.816
4	8.937	1340	1.08	1.33	8.81	19	14.176	2126	2.39	1.95	14.103
5	9.37	1405	1.39	3.57	9.204	20	14.296	2144	7.62	7.67	14.223
6	9.757	1463	1.27	1.72	9.617	21	15.103	2265	2.79	2.54	15.009
7	10.137	1520	13.42	11.55	10.05	22	15.423	2313	2.78	3.85	15.323
8	10.29	1543	24.17	20.9	10.223	23	16.356	2453	0.66	0.76	16.262
9	10.457	1568	1.86	1.93	10.403	24	17.502	2625	3.01	3.06	17.402
10	10.623	1593	2.66	1.93	10.557	25	18.635	2795	0.73	0.88	18.515
11	10.723	1608	5.63	5.72	10.657	26	19.022	2853	2.25	2.78	18.895
12	10.883	1632	0.74	0.67	10.837	27	20.948	3142	0.66	1.01	20.802
13	11.037	1655	0.91	1.47	10.963	28	22.808	3421	0.5	0.64	22.675
14	11.443	1716	1.49	1.45	11.37	29	25.781	3867	1.67	2.36	25.634
15	11.597	1739	4.1	3.55	11.53						

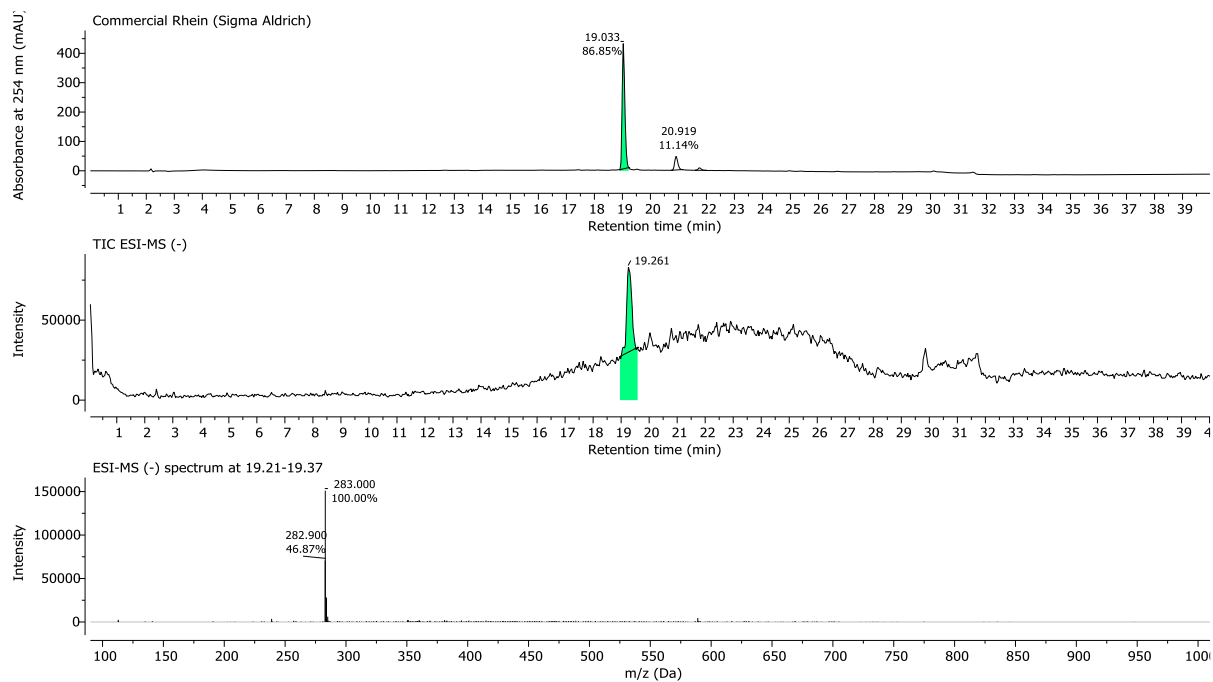


Figure S4: HPLC chromatogram (monitored at 254 nm), respective total ion current (TIC) ESI-MS (-) and extracted ESI-MS (-) spectrum at 19.21-19.37 min (green, rhein) of a commercial rhein sample (Sigma Aldrich).

Table S9: Peak list of the of rhein chromatogram at 254 nm with a minimum area threshold of 0.5%.

Peak #	rt	Total Height %	Total Area %	Start time	End time
1	19.033	90.22	88.64	18.846	19.313
2	20.919	9.78	11.36	20.633	21.193