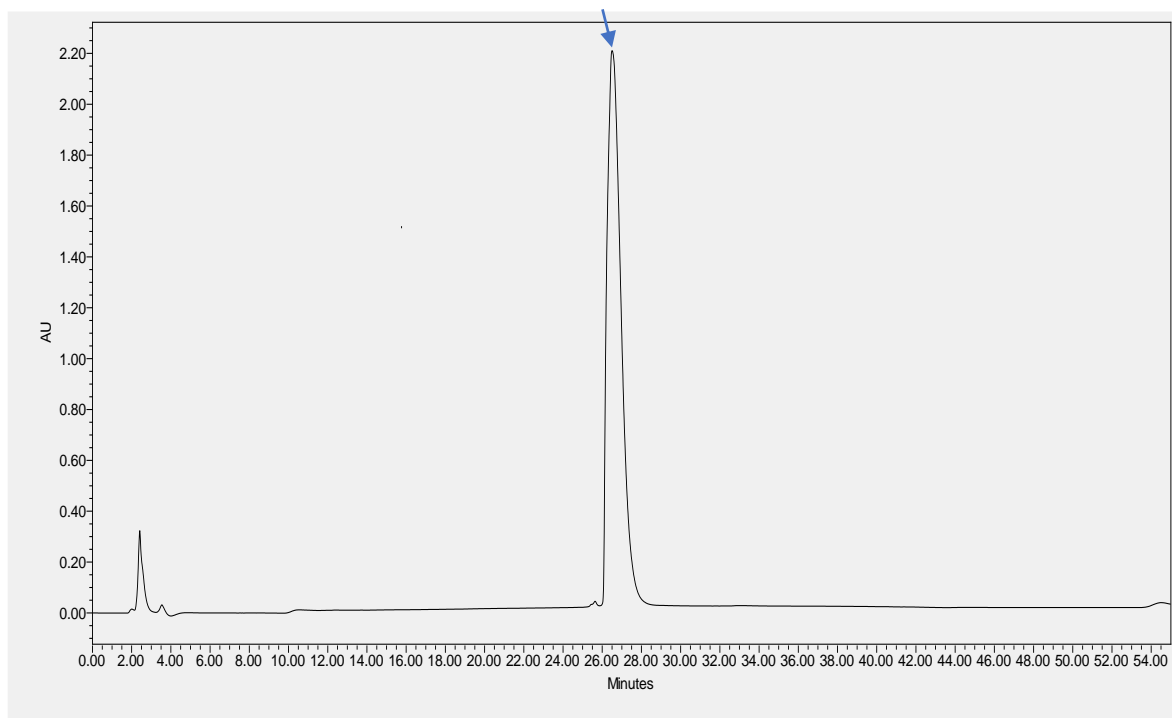
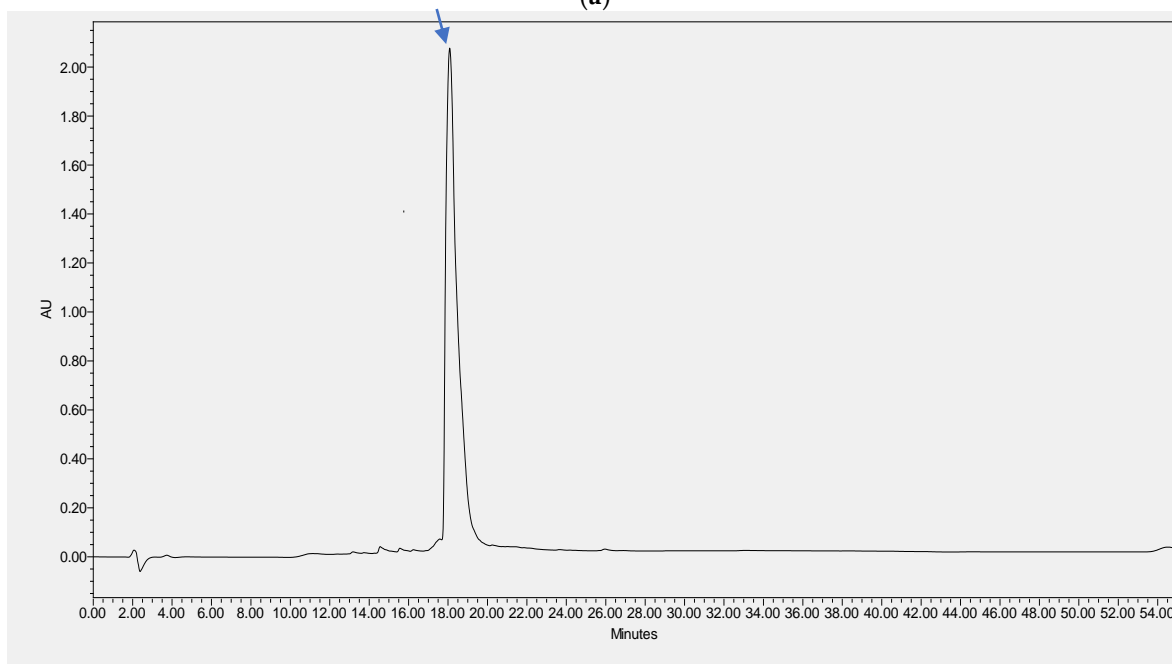


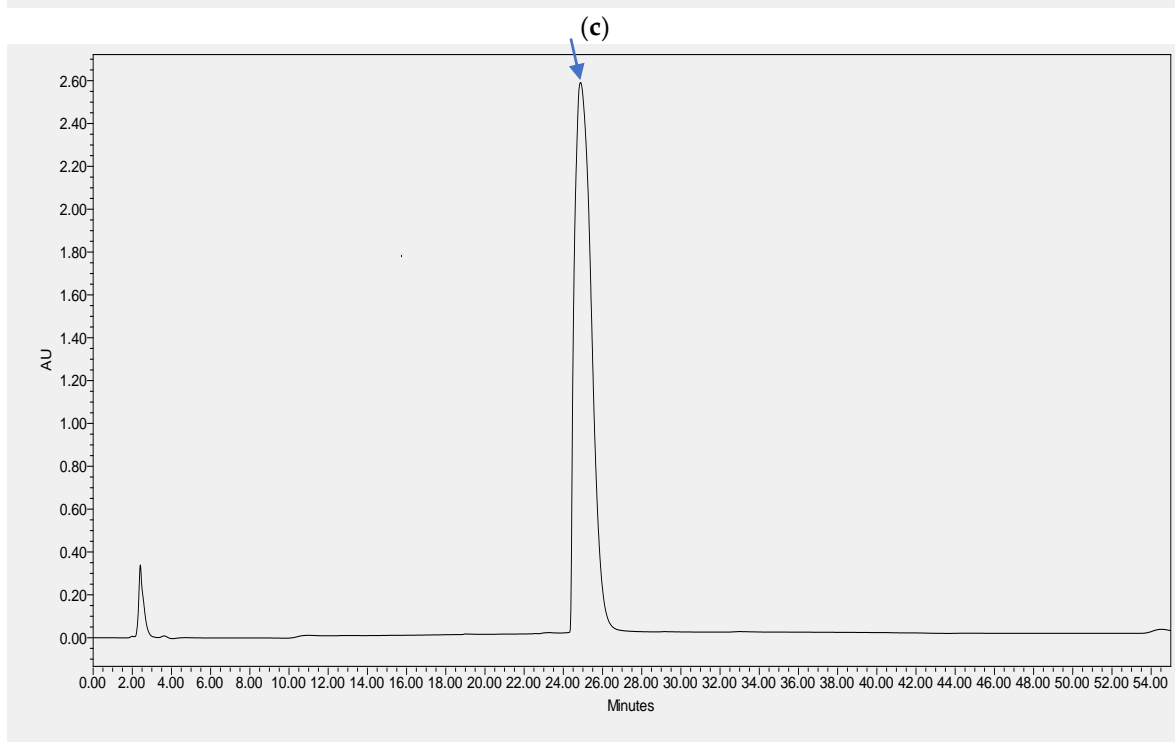
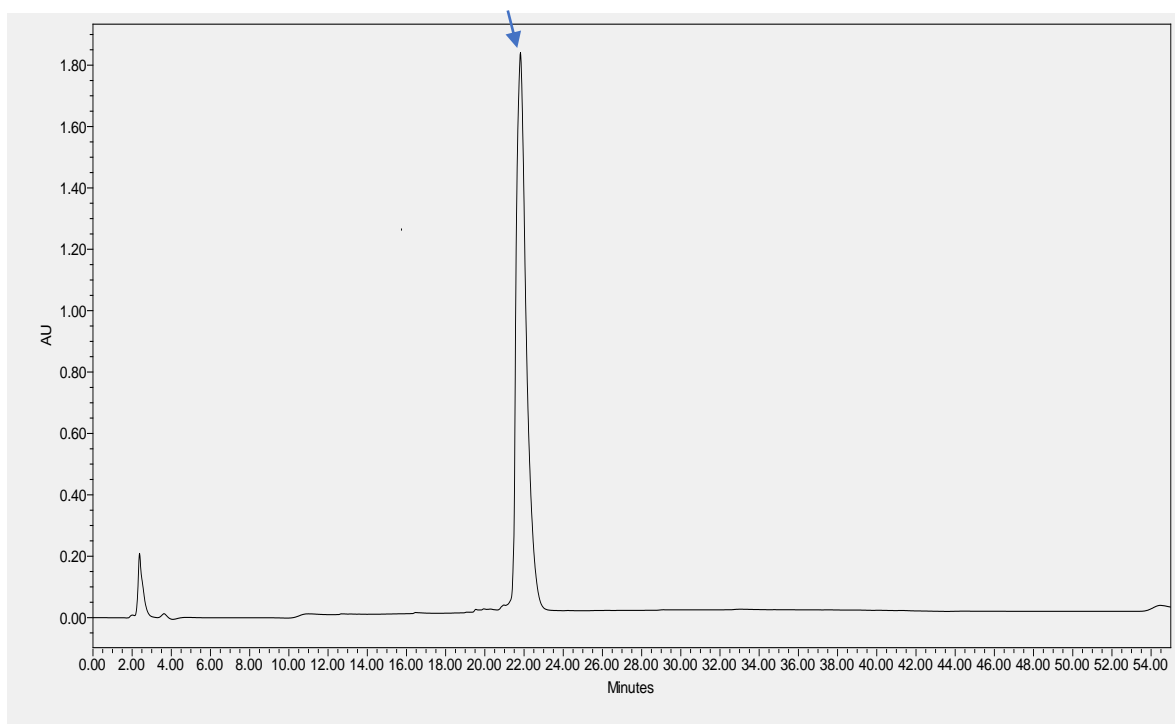
Kassporin-KS1: A Novel Pentadecapeptide from the Skin Secretion of *Kassina senegalensis*: Studies on the Structure-Activity Relationships of Site-Specific “Glycine-Lysine” Motif Insertions



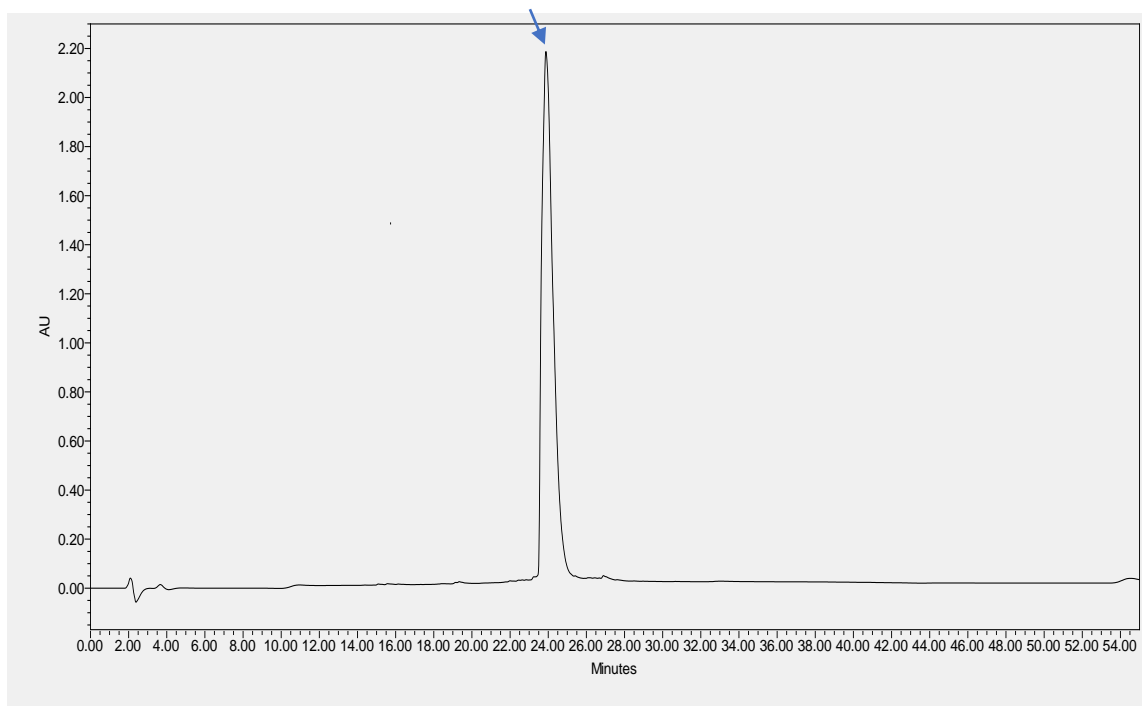
(a)



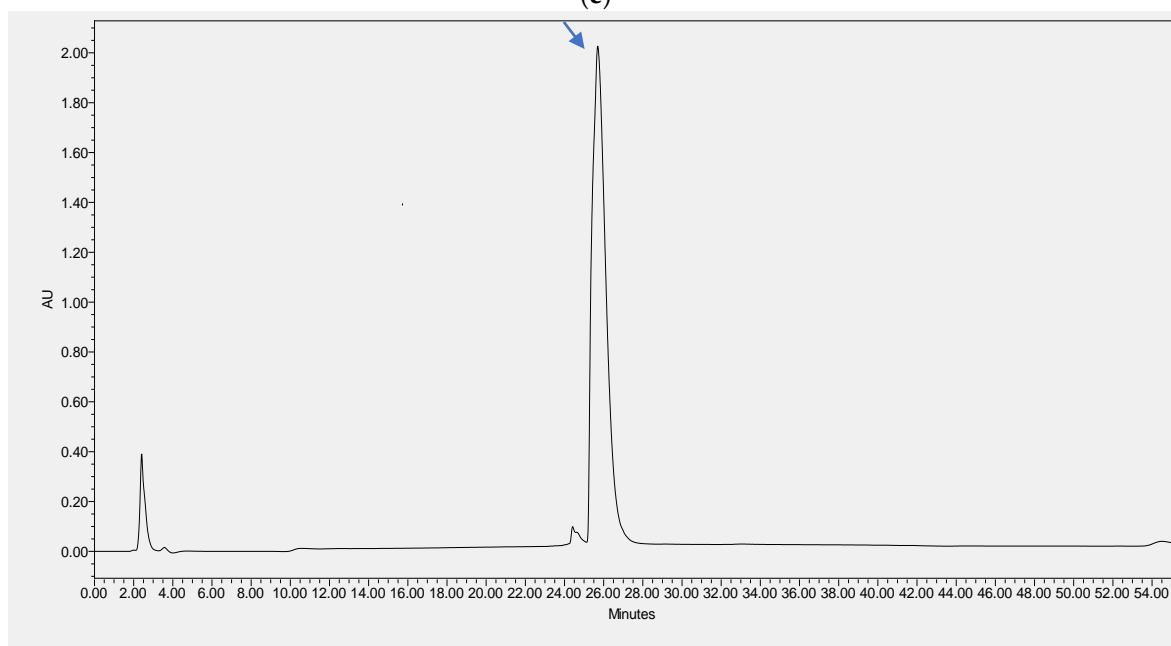
(b)



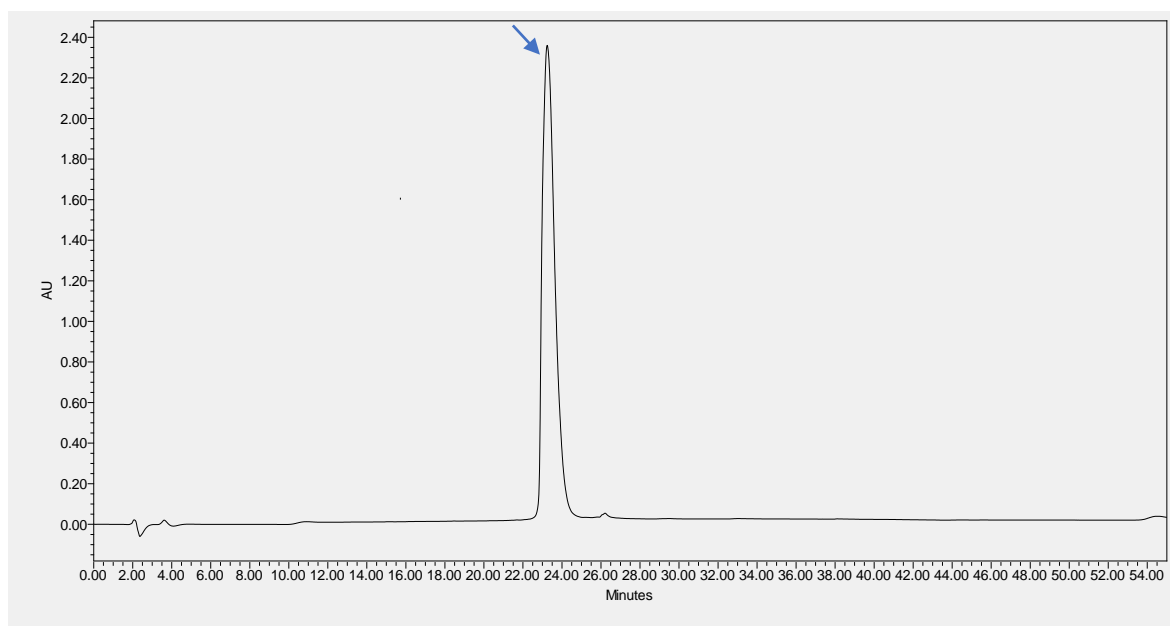
(d)



(e)

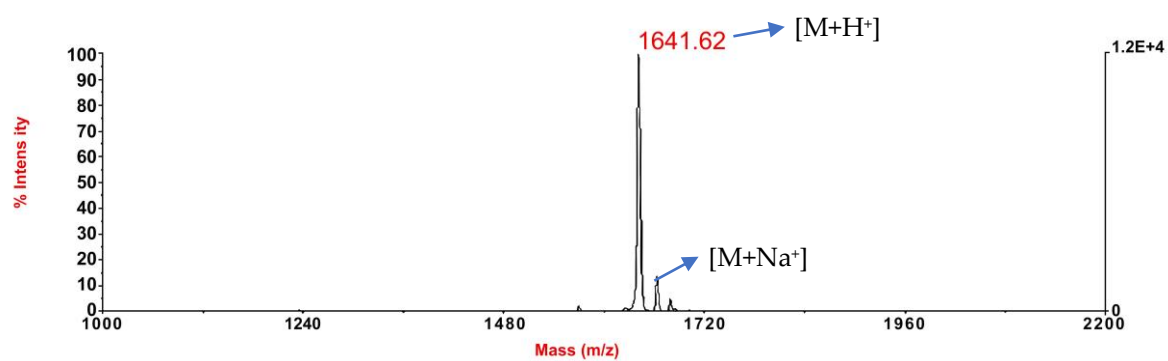


(f)

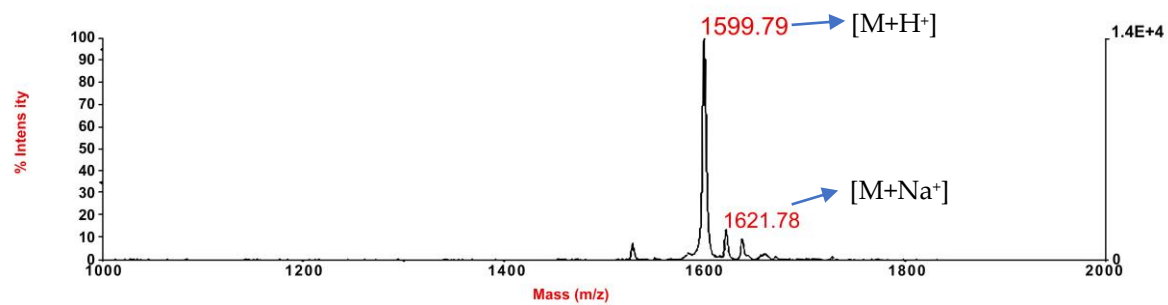


(g)

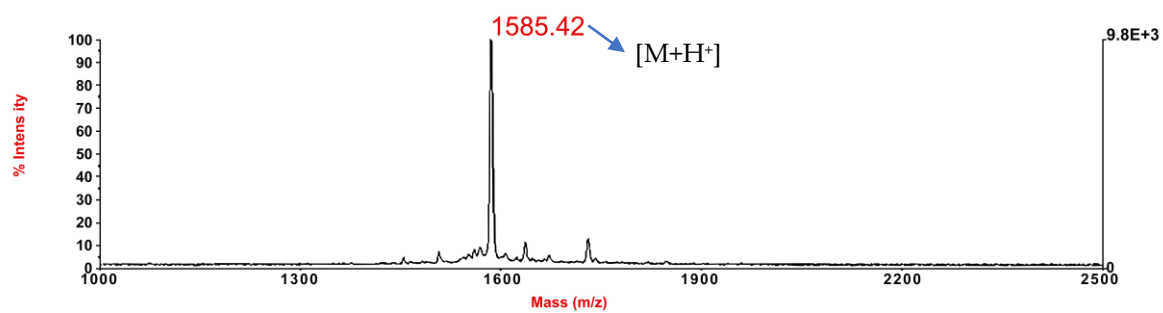
Figure S1. The RP-HPLC chromatogram of the pure peptides (QUB-1641 (a), QUB-1599 (b), QUB-1585 (c), QUB-1570 (d), QUB-1643 (e), QUB-1498 (f), and QUB-1609 (g)). The peak indicated by the arrow is the elution peak of the peptide.



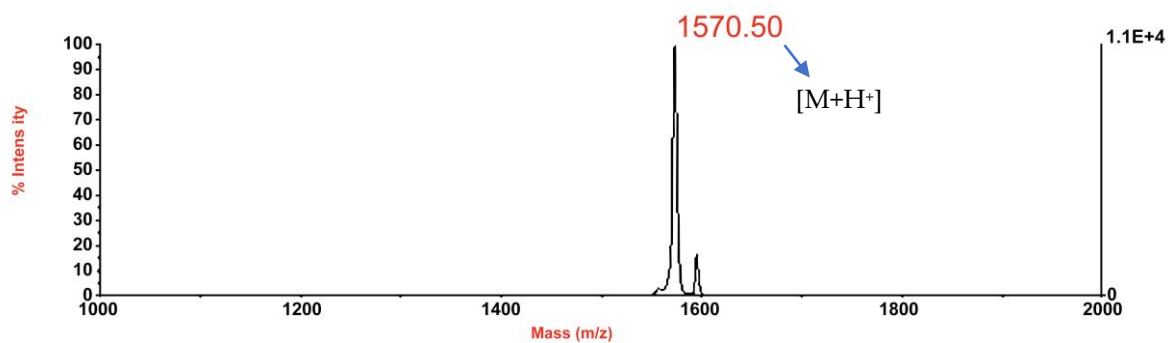
(a)



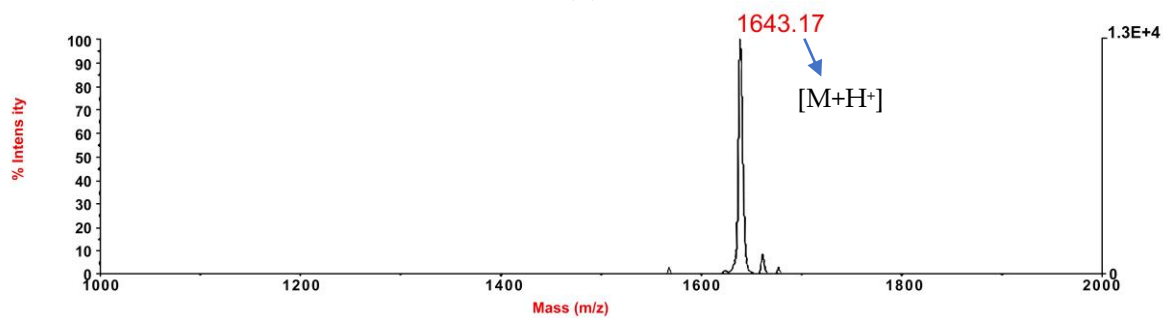
(b)



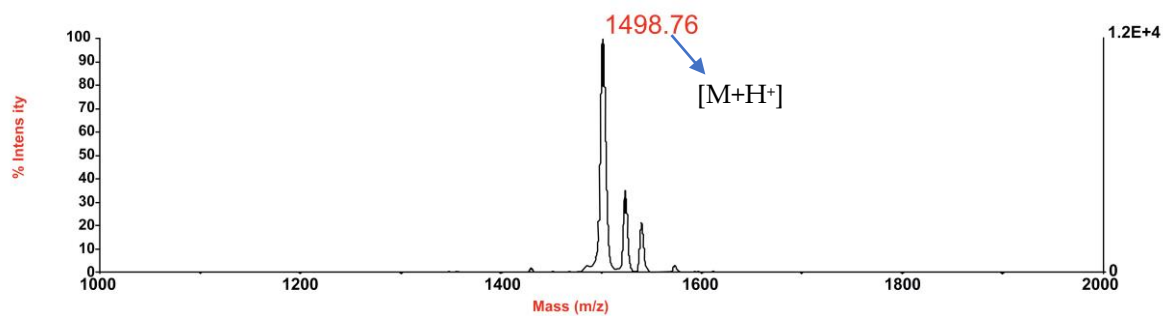
(c)



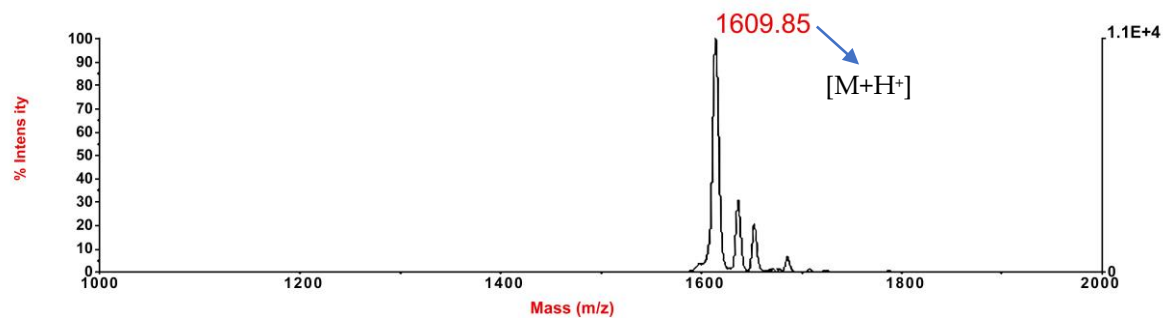
(d)



(e)



(f)



(g)

Figure S2. The purified peptides' MALDI-TOF mass spectra (mass-to-charge ratios) (QUB-1641 (a), QUB-1599 (b), QUB-1585 (c), QUB-1570 (d), QUB-1643 (e), QUB-1498 (f), and QUB-1609 (g)). The peptides' $[M+H]^+$ ion peaks and their sodium ion adducts were indicated by arrows.