

Table S1. The origin of *A. baumannii* (n = 58) strains used in the present study.

Clinic/Unit	Strains number (%)
Anesthesiology and Intensive Care	40 (69.0%)
Cardiology and Internal Diseases	5 (8.6%)
Liver Surgery and General Surgery	4 (6.9%)
Vascular Surgery and Angiology	4 (6.9%)
Other*	5 (8.6%)

* one strain isolated from each of the following: Cardiac Surgery, Intensive Unit of Cardiac Surgery, Geriatrics, Endocrinology and Rehabilitation Clinics

Table S2. The origin of *A. baumannii* (n = 58) strains used in the present study with respect to clinical specimen type.

Clinical material	Strains number (%)
Bronchoalveolar lavage	26 (44.8%)
Wound swabs	13 (22.4%)
Blood	7 (12.1%)
Urine	3 (5.2%)
Vascular catheter	2 (3.4%)
Peritoneal swabs	2 (3.4%)
Other*	5 (8.6%)

* one strain was isolated from each of the following: cerebrospinal fluid, pus, tissue sample, discharge from respiratory tract, granulation tissue

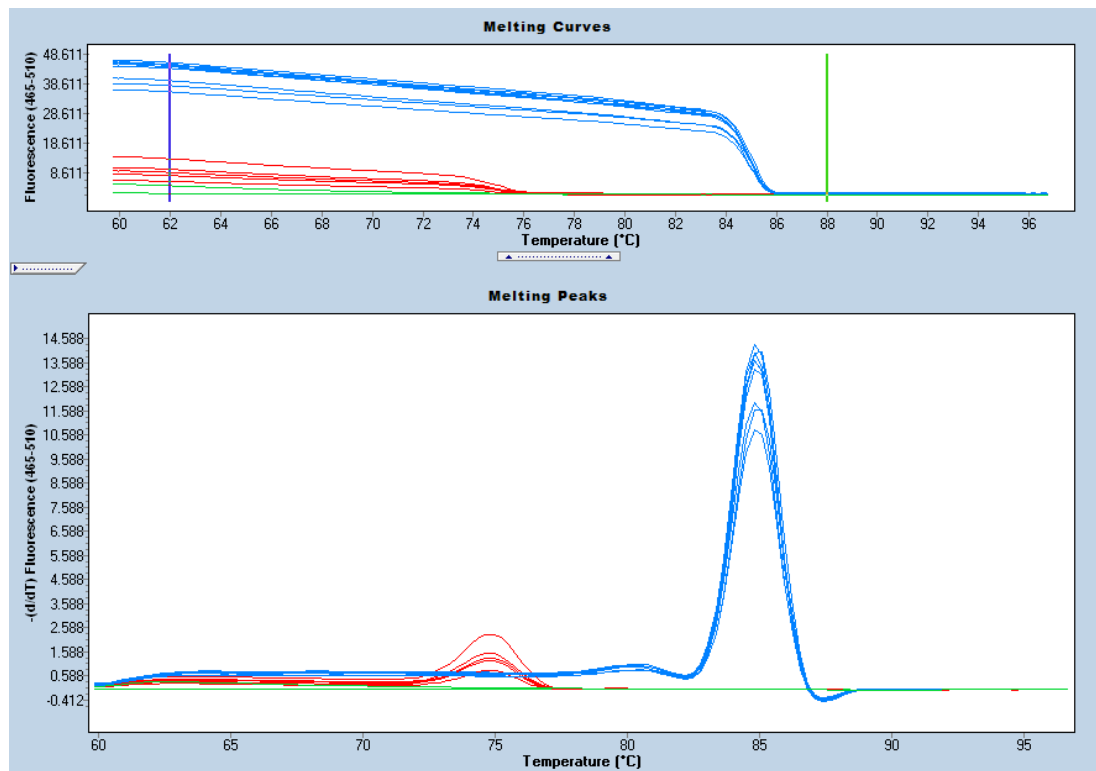


Figure S1. An example of melting curves and melting peaks picture showing specificity of the real-time PCR product for *bla*_{OXA-23} gene (blue lines).