

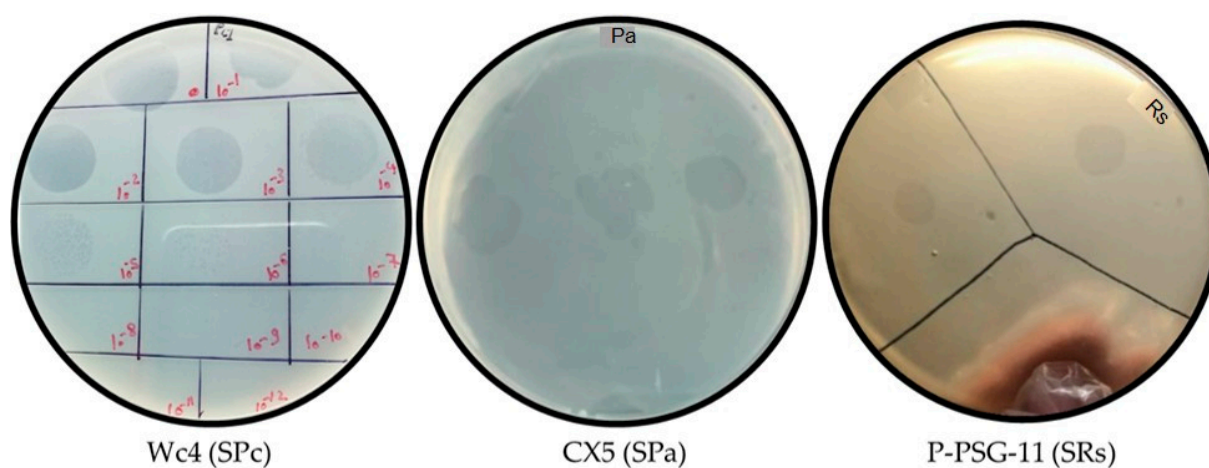
Table S1. Some characteristics of the experimental soil and cattle manure (CM)

Characteristics	Soil	CM
<u>Particle size distribution (%):</u>		
Textural grade	Sand	-
pH	8.01 [†]	7.39 [‡]
EC _e (dS m ⁻¹) [§]	1.11	10.7
<u>Soluble cations (meq l⁻¹) [§]</u>		
Na ⁺	3.8	12.0
K ⁺	1.54	9.91
Ca ²⁺	21.4	26.2
Mg ²⁺	9.3	6.0
<u>Soluble anions (meq l⁻¹) [§]</u>		
Cl ⁻	0.16	1.38
HCO ₃ ⁻	2.20	36.0
SO ₄ ²⁻	0.43	5.98
CO ₃ ²⁻	0.00	0.0
Organic C (g kg ⁻¹)	0.36	12.6
Total N (g kg ⁻¹)	0.21	11.6
Available N (mg kg ⁻¹)	1.29	79.7
Available P (mg Kg ⁻¹)	3.0	101

[†] In soil-water suspension (1:2.5)

[‡] In CM-water suspension (1:5)

[§] In soil and CM saturated extract Statistical analysis

**Figure S1.** Phage plaque assay

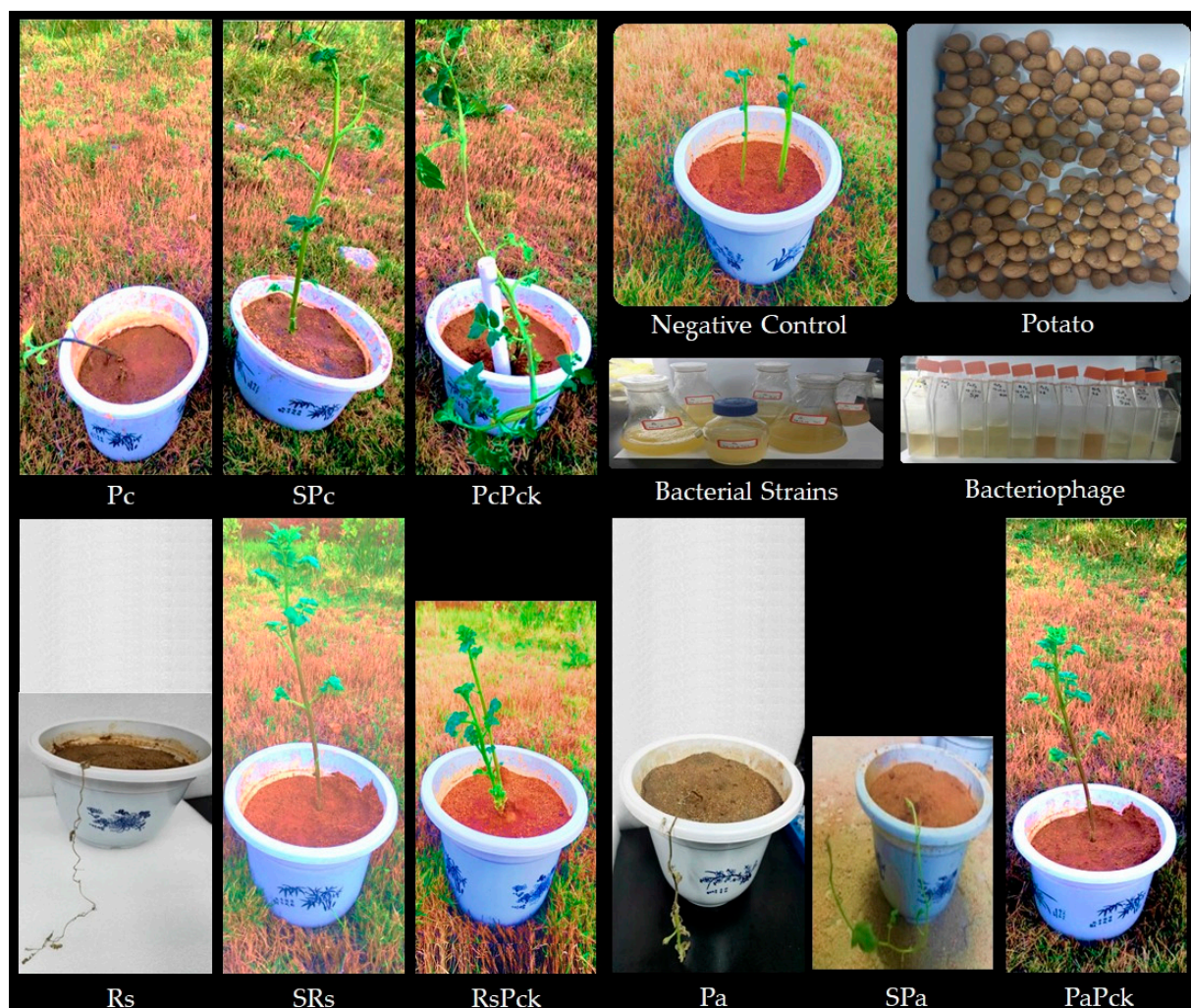


Figure S2. Phage biocontrol experiment