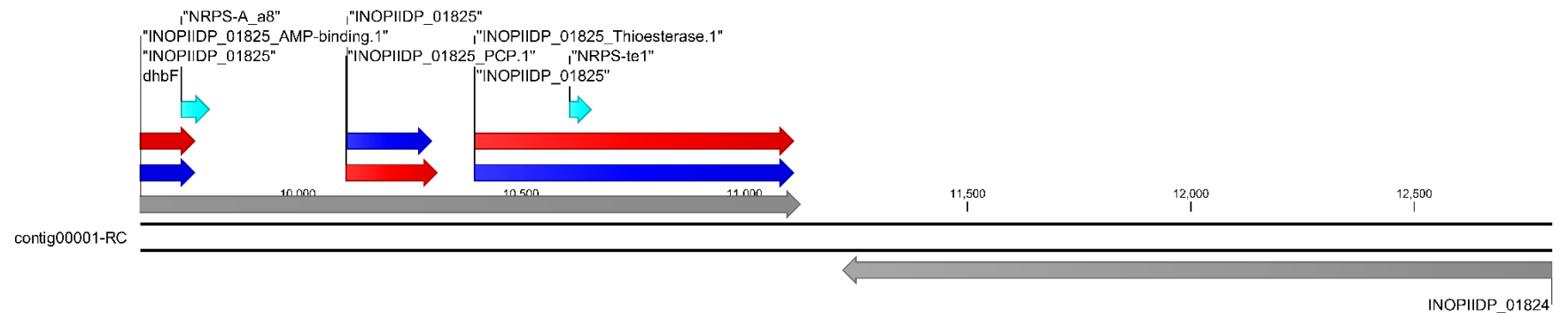
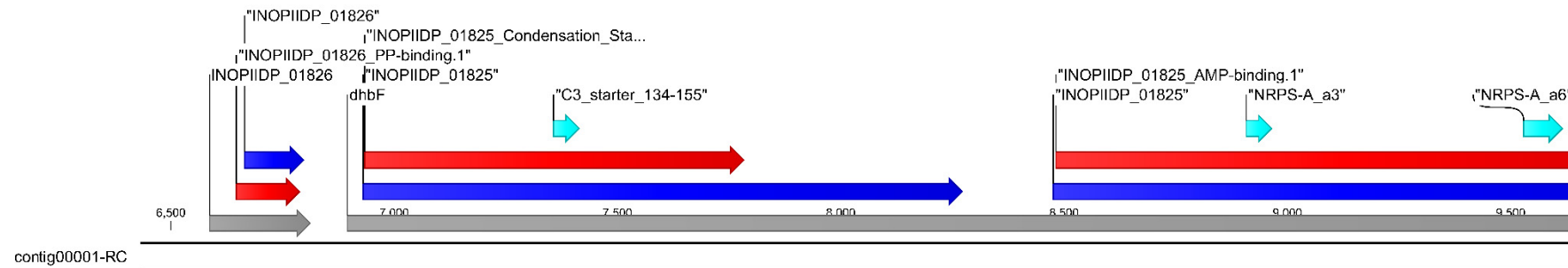
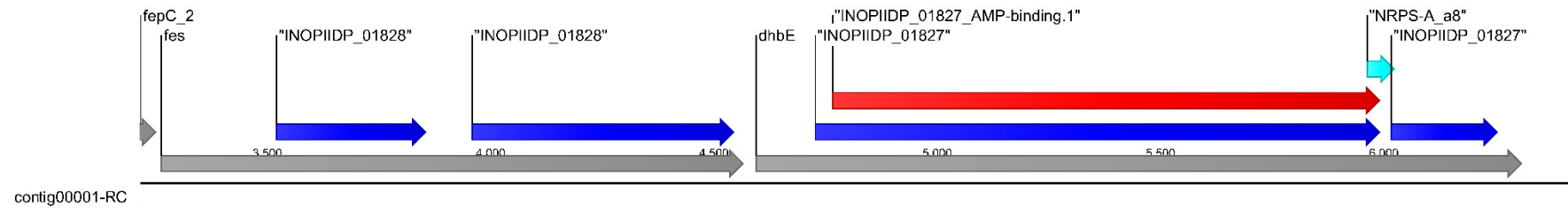
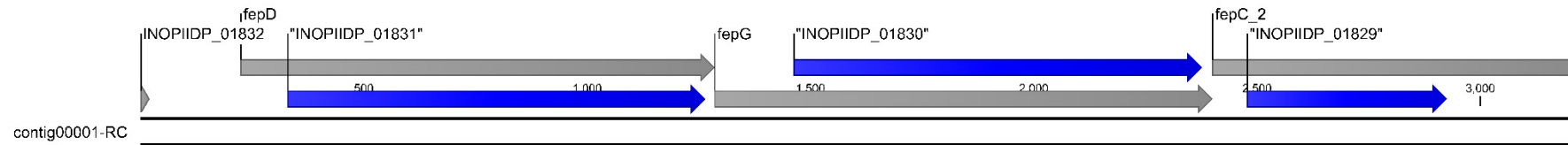
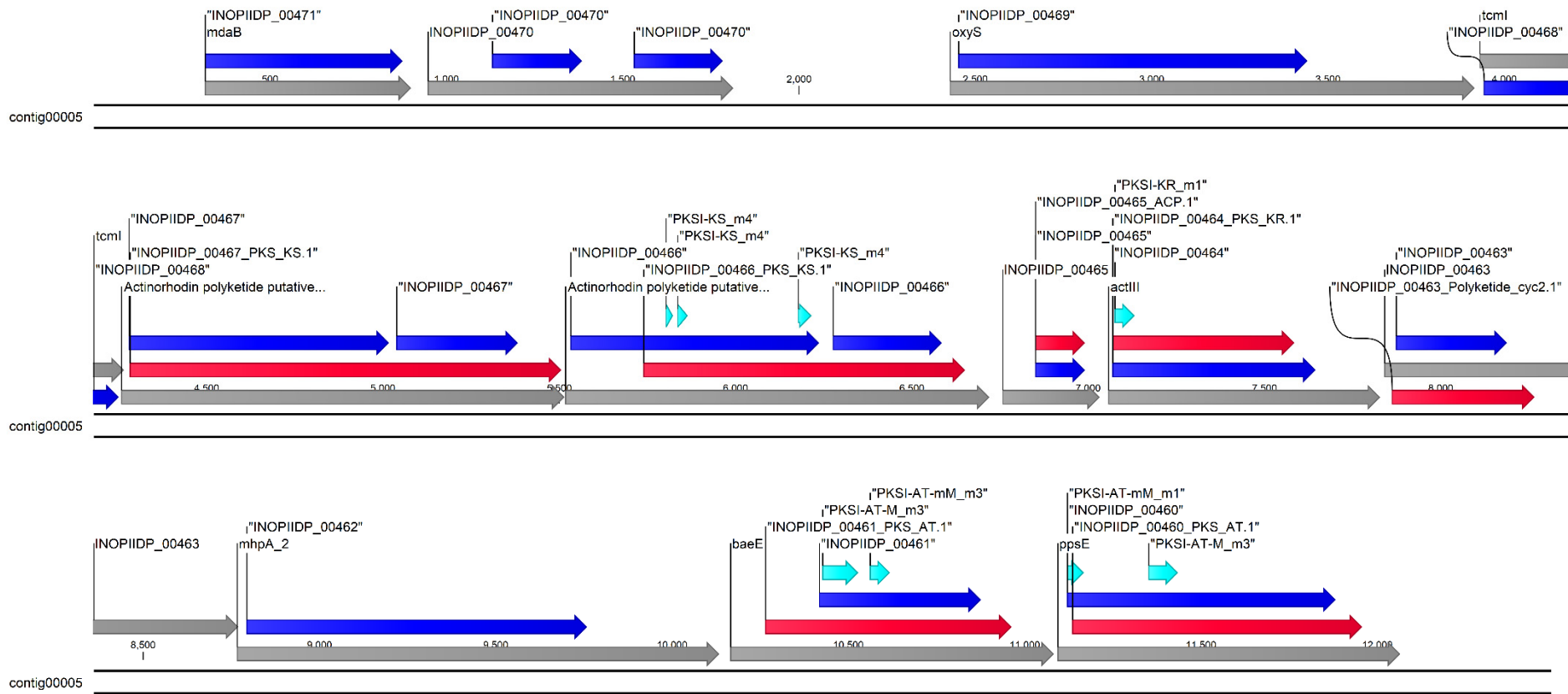


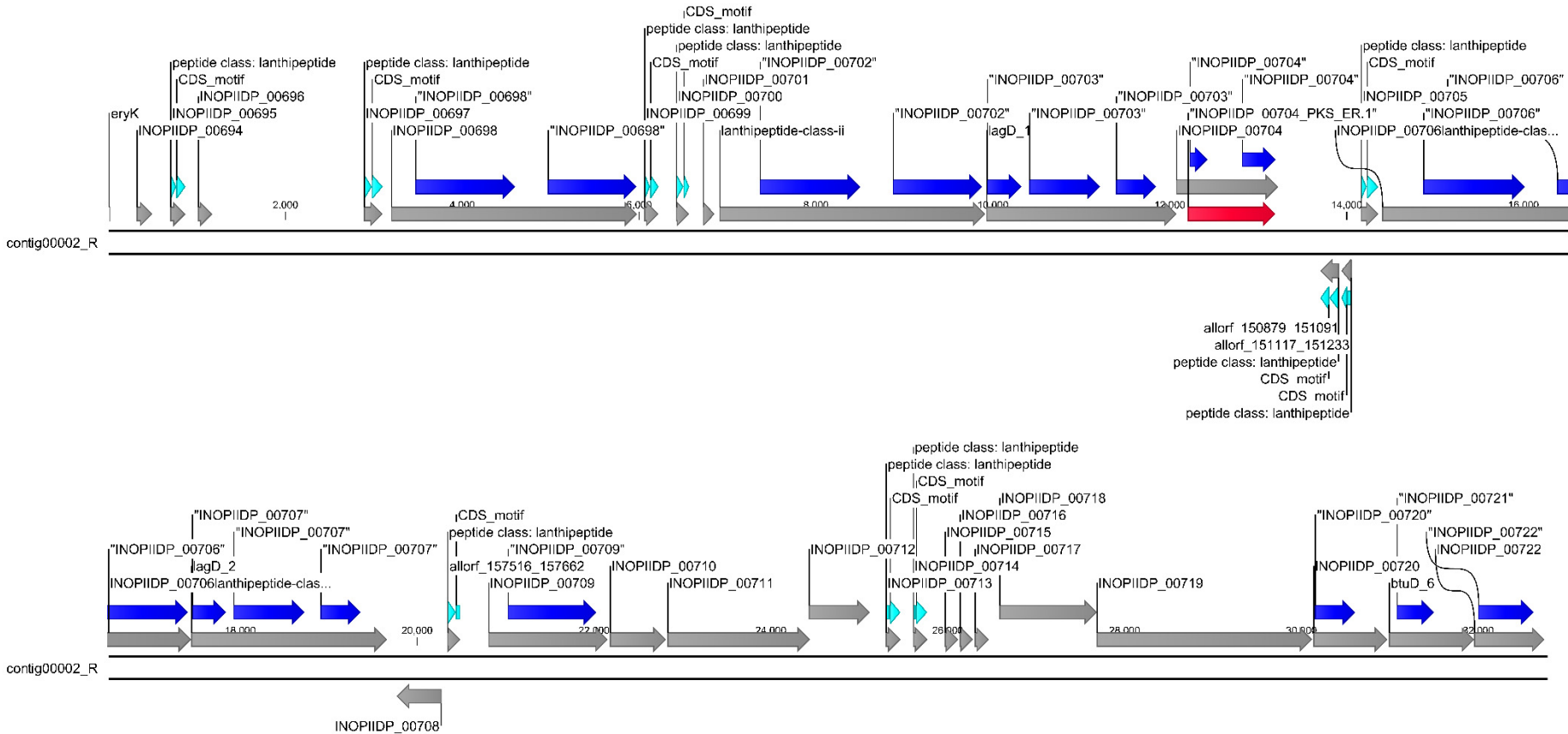
(a) Enterobactin non-ribosomal peptide synthetase EntF



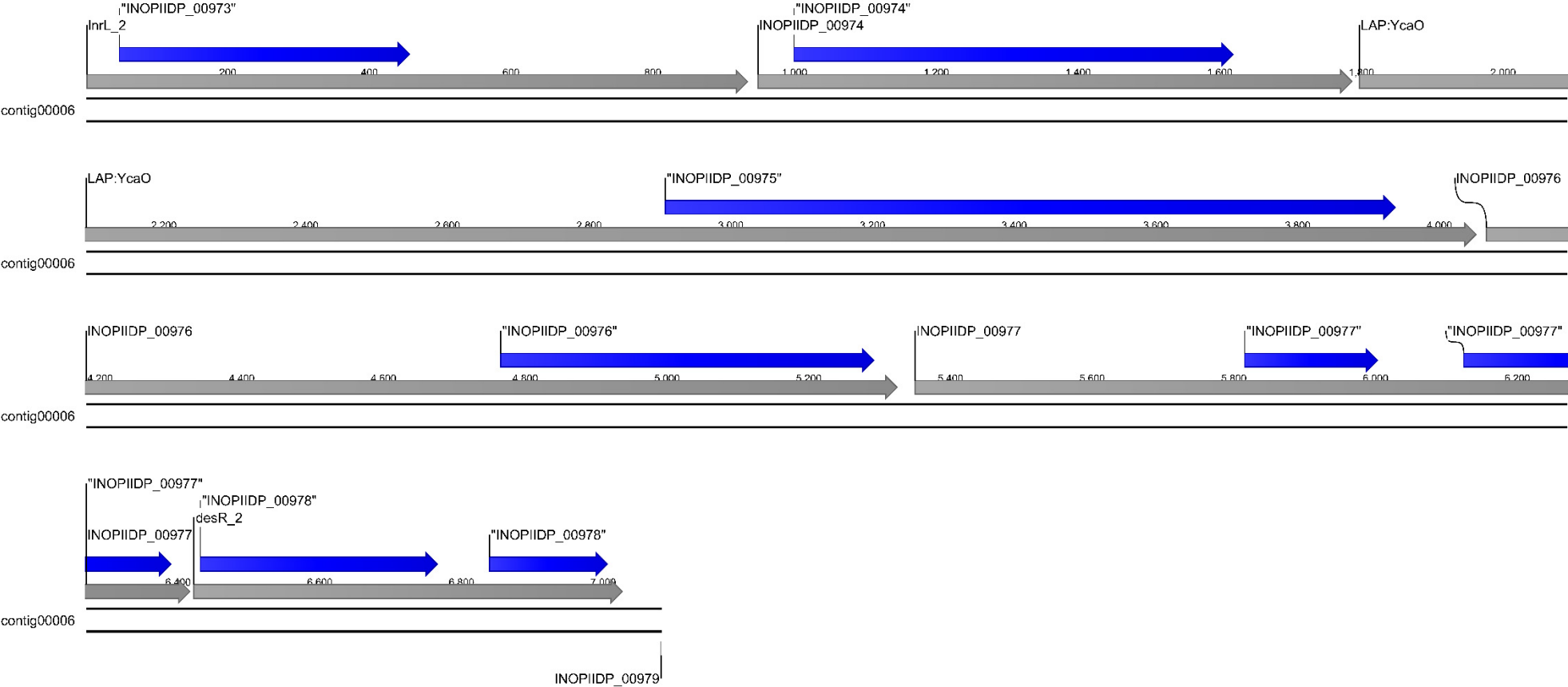
(b) Actinorhodin polyketide putative beta-ketoacyl synthase 1 and 2



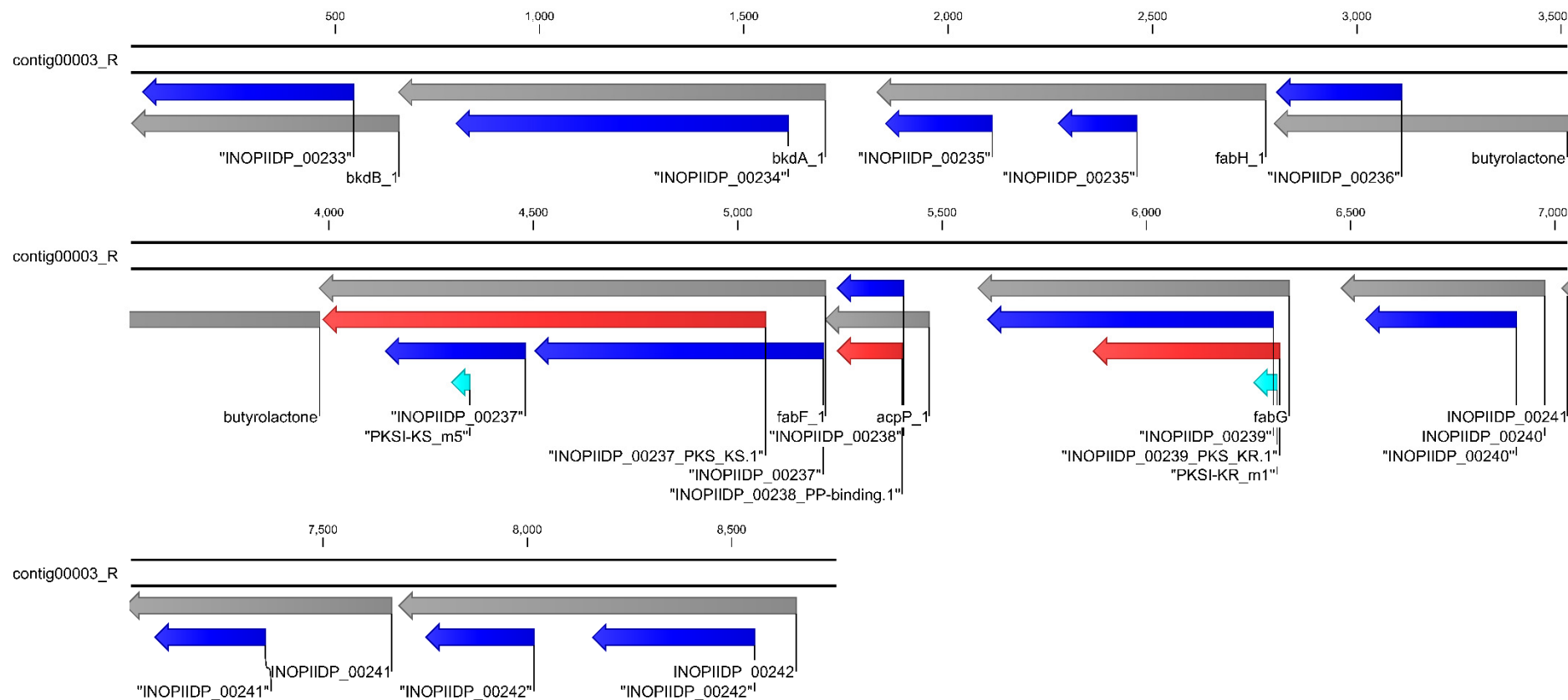
(c) Type 2 lanthipeptide synthetase LanM



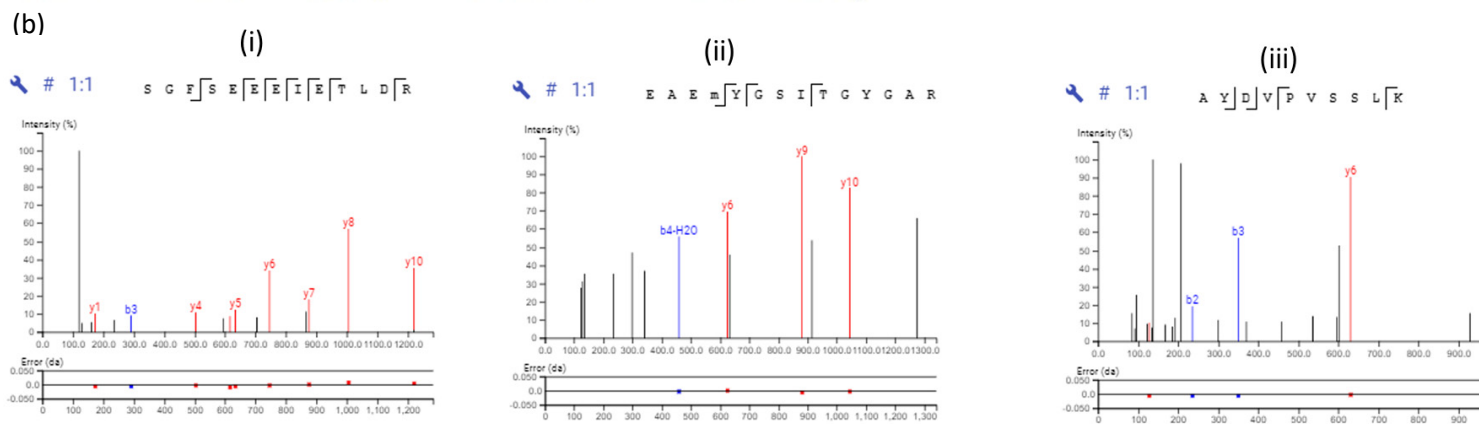
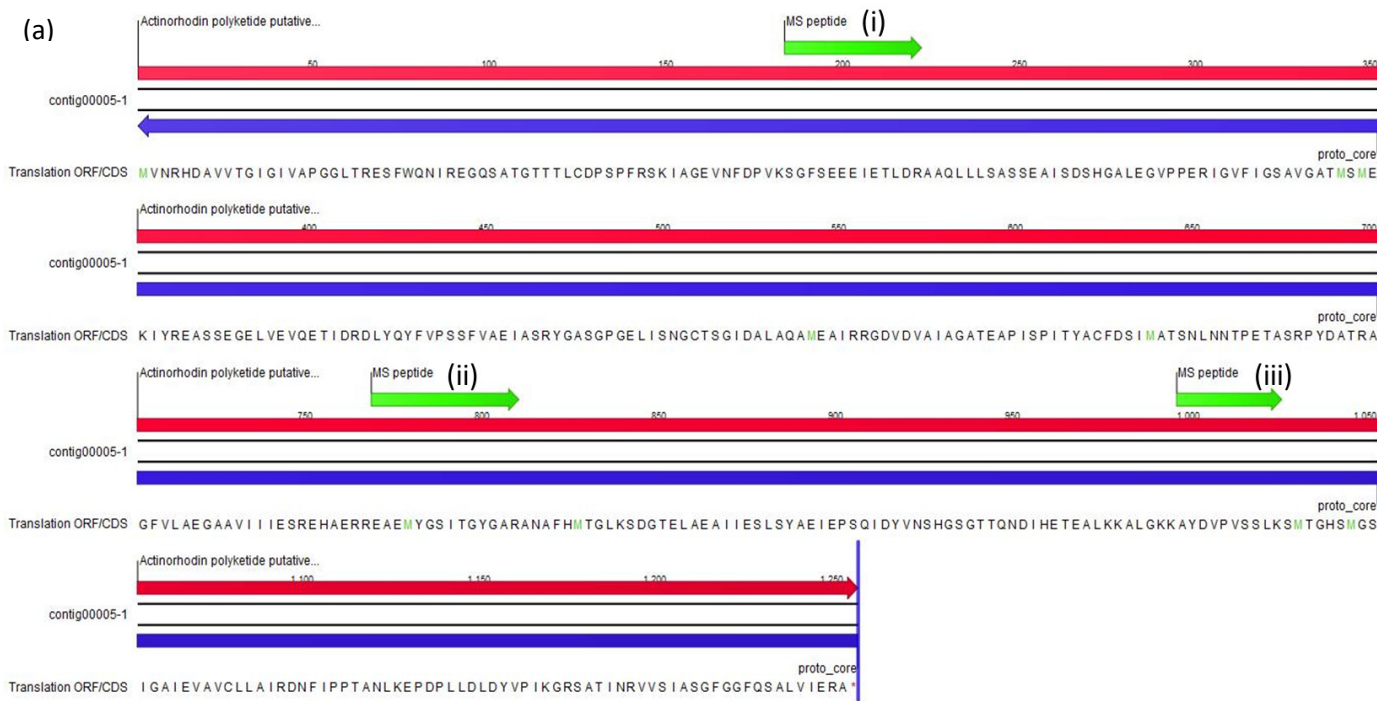
(d) YcaO-like family protein and SagB family peptide dehydrogenase (LAP)



(e) Butyrolactone



Supplementary Figure S1: The putative genetic organization of (a) enterobactin, EntF (b) actinorhodin polyketide putative beta-ketoacyl synthase 1 and 2 (c) lantipeptide-class-ii peptide (d) LAP (Linear azol(in)e-containing peptides) (e) Butyrolactone.



Supplementary Figure S2: Putative genetic organization of (a) enterobactin, EntF and (b) corresponding three peptides identified using LC-MS system.