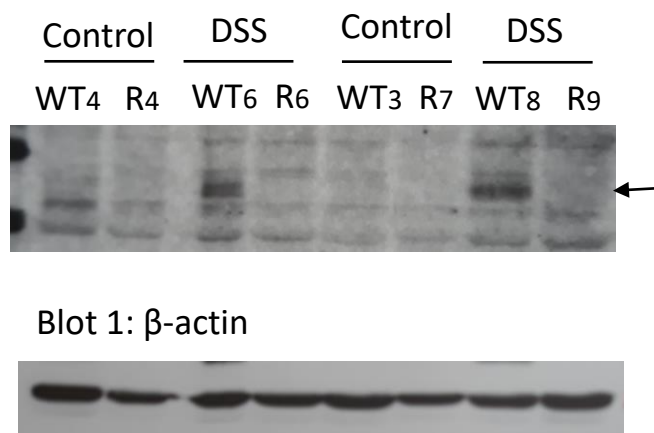


A Blot 1: Phospho- Ser¹⁵ p53



B Blot 2: Total p53

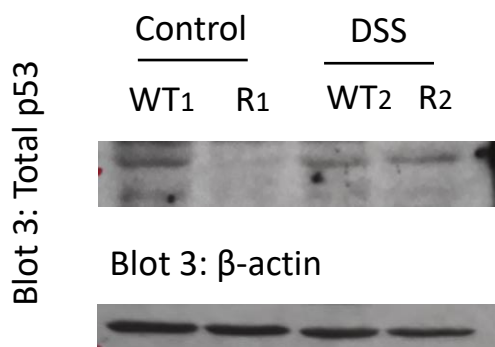
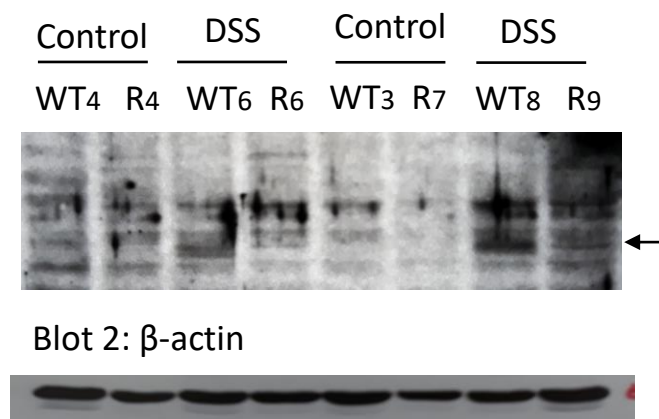


Figure S1: Western blots of (A) phospho- Ser¹⁵ p53 and (B) total p53 protein detected with either anti-p53 (sc-6243) 1:500 or anti-p53 phosphorylated (Ser¹⁵) (AF1043) 1:500, respectively. β-actin protein was detected using anti β-actin (A2547) 1:5,000.

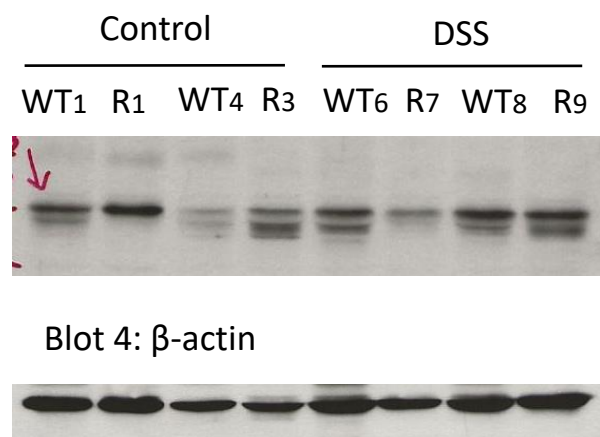
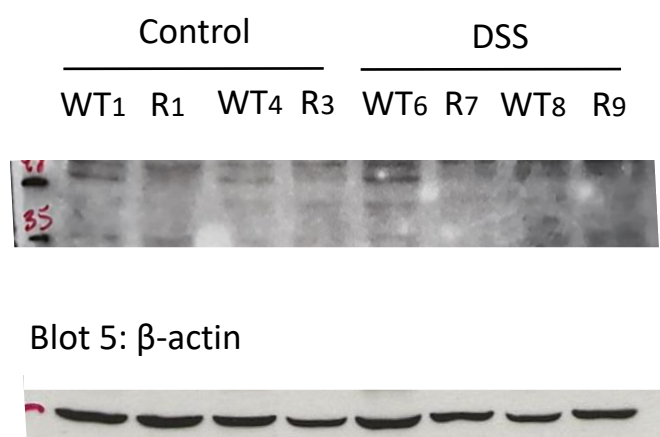
A Blot 4: GSK-3 β **B** Blot 5: Phospho- Ser⁴⁷³ Akt

Figure S2: Western blots of (A) phospho- Ser⁴⁷³ Akt and (B) GSK-3 β protein detected with either anti-AKT phosphorylated (Ser⁴⁷³) (sc-7985-R) 1:500 or anti-GSK-3 β (sc-9166) 1:500, respectively. β -actin protein was detected using anti β -actin (A2547) 1:5,000.