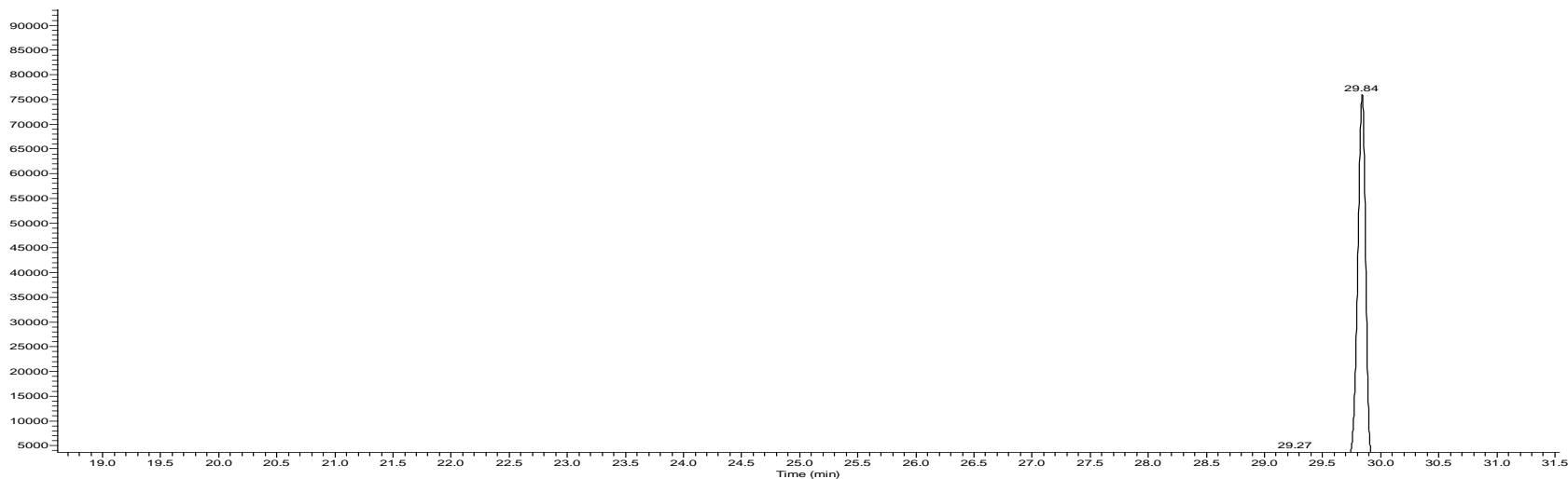
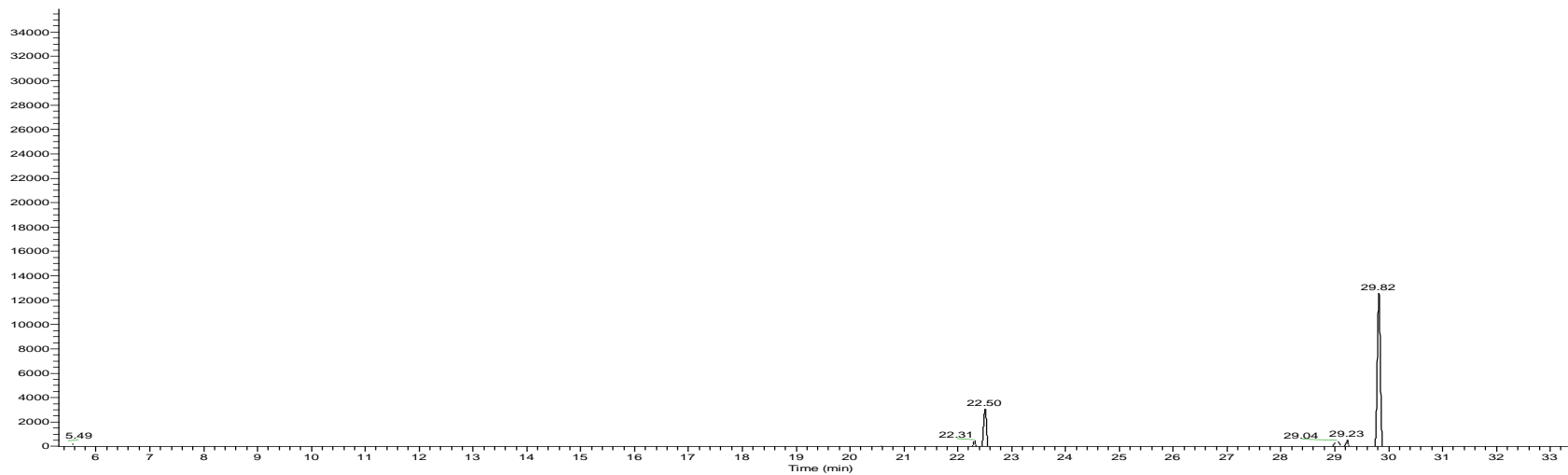


RT: 18.61 - 31.54



A

RT: 5.30 - 33.62



B

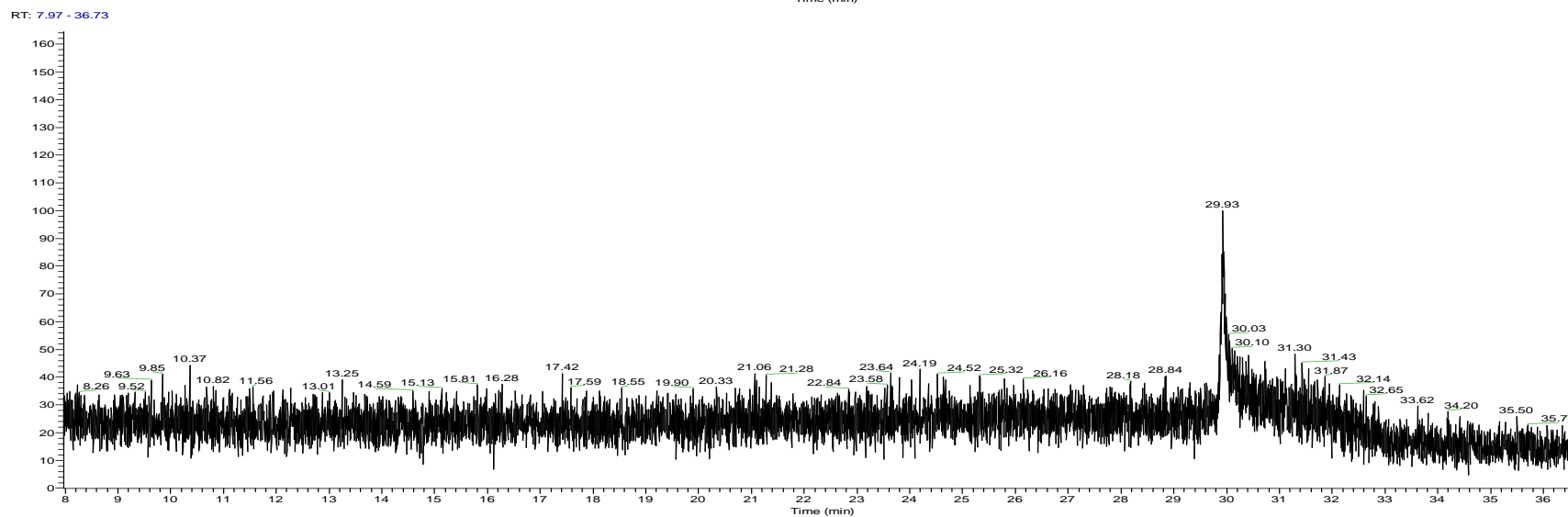
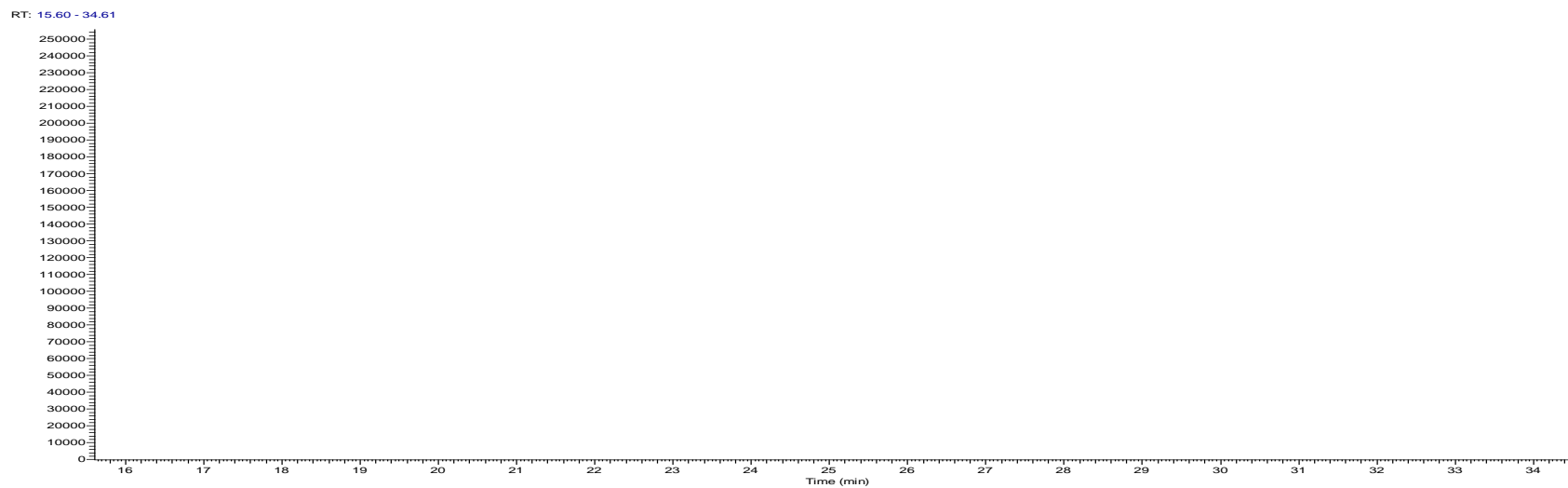
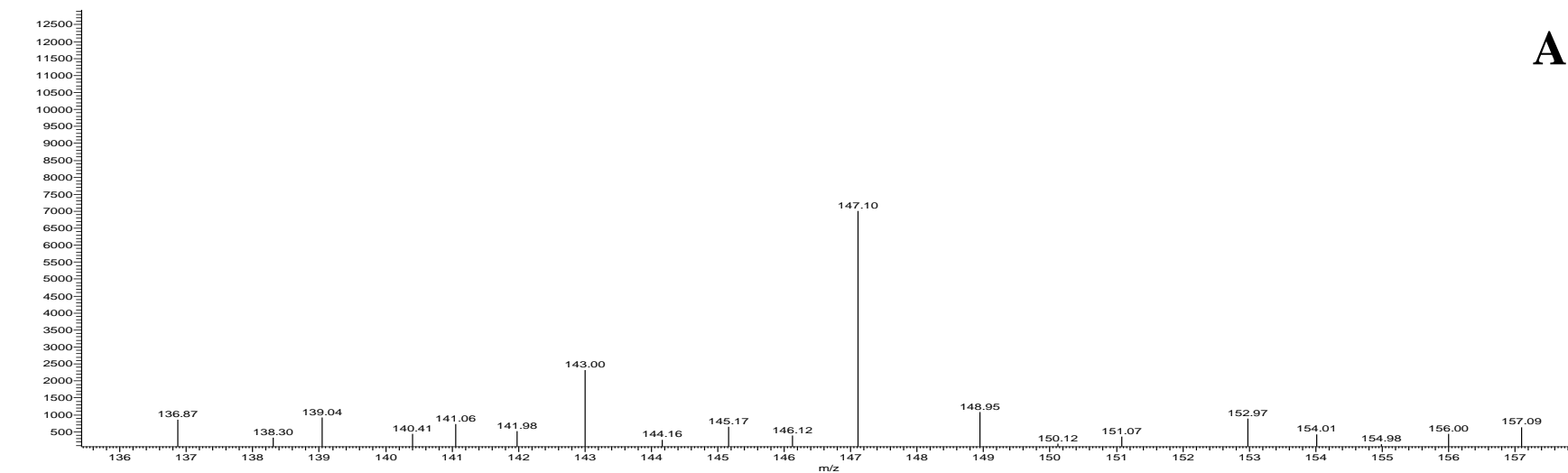


Figure S1. Chromatographic data of *trans*-cinnamic acid standard (**A**), *trans*-cinnamic acid sample (**B**), blank sample (**C**), and the total ion chromatogram showing *trans*-cinnamic acid (**D**).

A

neg_tlen_test_sigma_164+147in147in147+103 #4511-4624 RT: 20.58-20.21 AV: 38 NL: 2.75E2
F: ITMS - c ESI Full ms2 147.00@cid35.00 [50.00-2000.00]

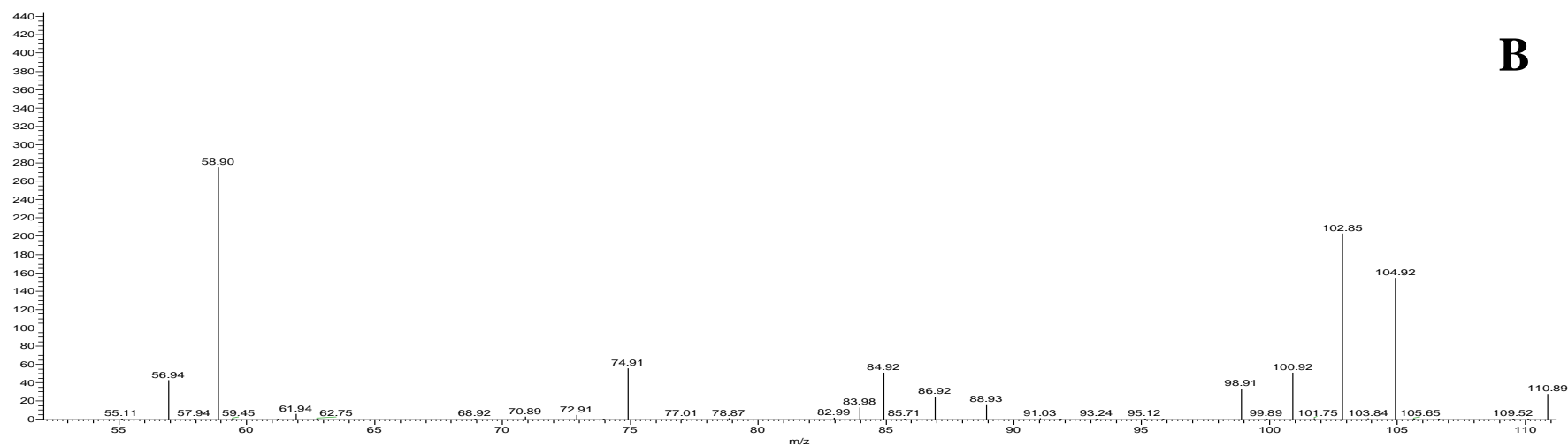
B

Figure S2. *Trans*-cinnamic acid MS ions, MSⁿ 147 (A) and MS² 103 (B).