

Figure S1. Inhibition zone of antagonistic strains against *Pbr* in plate assays. (A): ZF115; (B): ZF119; (C): ZF185; (D): ZF194; (E): ZF278; (F): ZF390; (G): ZF402; (H): ZF405; (I): ZF428; (J): ZF429; (K): ZF436; (L): ZF448; (M): ZF450; (N): ZF453.

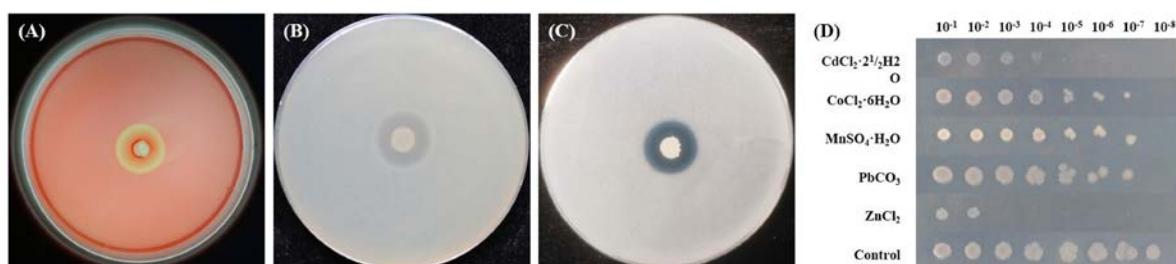


Figure S2. Plate assays for production of cellulase (A), protease (B) and phosphatase (C) by *Paenibacillus peoriae* ZF390 and heavy metal resistance of strain ZF390 (D).

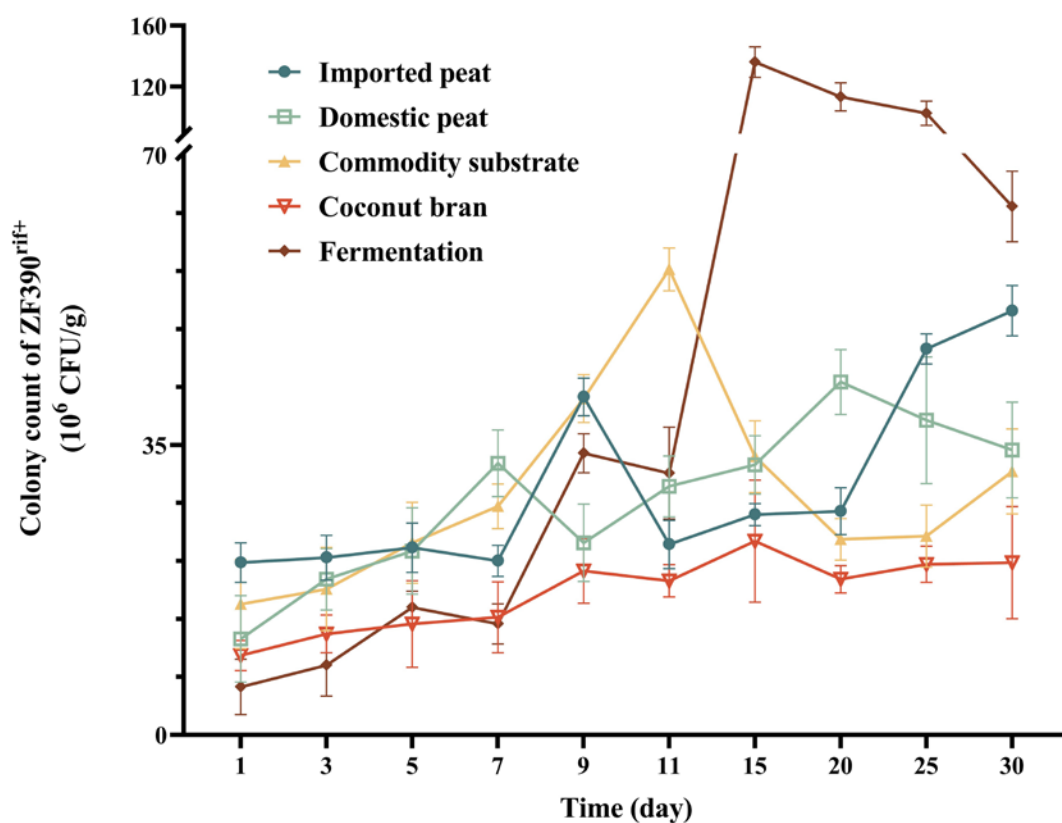


Figure S3. Colonization of the strain ZF390 in different types of soils.

