

Figure S1. The schematic diagram of mouse construction strategy and the typical graph of DNA running gel electrophoresis. (A) The schematic diagram of mouse construction strategy. (B) The two on the left represent the wild type, the two in the middle represent heterozygotes, and the two on the right represent homozygotes.

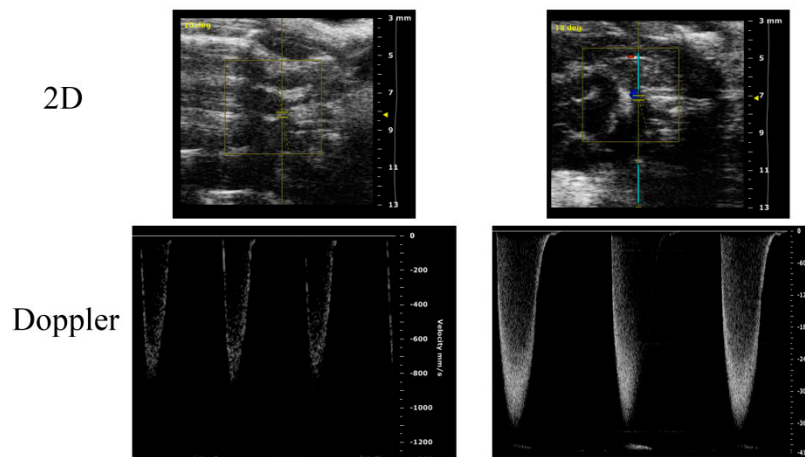


Figure S2. Typical graphs showing blood flow velocity at the banding site of the aortic arch in sham and TAC groups. Compared to the sham group, the blood flow velocity was significantly higher in TAC group.

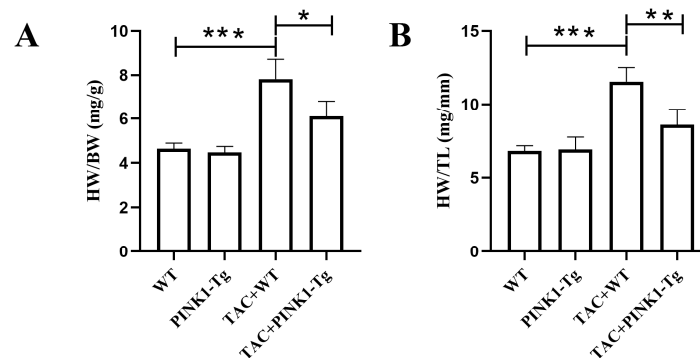


Figure S3. Overexpression of PINK1 attenuated cardiac hypertrophy in TAC mice. (A) Heart weight normalized to body weight(HW/BW). (B) Heart weight normalized to tibia length(HW/TL). Statistical analyses were performed by one-way ANOVAs followed by Bonferroni test post-hoc tests. *: $P < 0.05$, **: $P < 0.01$, ***: $P < 0.001$, values are presented as the mean \pm SD, $n = 6$.

