

Correction

Correction: Shawky et al. The Biological Impacts of Sitagliptin on the Pancreas of a Rat Model of Type 2 Diabetes Mellitus: Drug Interactions with Metformin. *Biology* 2020, 9, 6

Lamiaa M. Shawky ¹, Ahmed A. Morsi ^{2,*} , Eman El Bana ³ and Safaa Masoud Hanafy ⁴

¹ Department of Histology and Cell Biology, Benha Faculty of Medicine, Benha University, Benha 13511, Egypt; lamiashawky1974@gmail.com

² Department of Histology and Cell Biology, Faculty of Medicine, Fayoum University, Fayoum 63511, Egypt

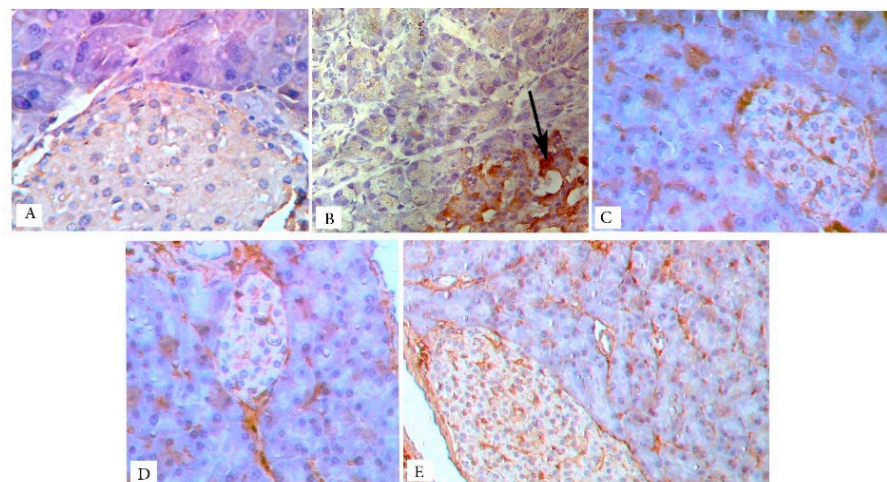
³ Department of Anatomy, Benha Faculty of Medicine, Benha University, Benha 13511, Egypt; emanelbana88@gmail.com

⁴ Department of Anatomy, Faculty of Medicine for Girls, Al-Azhar University, Cairo 11865, Egypt; safaahanafy4577@gmail.com

* Correspondence: ahmed.saqr4@gmail.com or aaa21@fayoum.edu.eg

Error in Figure

In the original publication [1], there was a mistake in Figure 7 as published. Image D was mistakenly selected for the metformin-treated group. The corrected Figure 7 and the updated magnification appears below. The authors state that the scientific conclusions are unaffected. This correction was approved by the Academic Editor. The original publication has also been updated.



Magnification: (A–D) ×400 and (E) ×200



Citation: Shawky, L.M.; Morsi, A.A.; El Bana, E.; Hanafy, S.M. Correction: Shawky et al. The Biological Impacts of Sitagliptin on the Pancreas of a Rat Model of Type 2 Diabetes Mellitus: Drug Interactions with Metformin. *Biology* 2020, 9, 6. *Biology* 2024, 13, 527. <https://doi.org/10.3390/biology13070527>

Received: 27 June 2024

Accepted: 9 July 2024

Published: 16 July 2024



Copyright: © 2024 by the authors. Licensee MDPI, Basel, Switzerland. This article is an open access article distributed under the terms and conditions of the Creative Commons Attribution (CC BY) license (<https://creativecommons.org/licenses/by/4.0/>).

Reference

- Shawky, L.M.; Morsi, A.A.; El Bana, E.; Hanafy, S.M. The Biological Impacts of Sitagliptin on the Pancreas of a Rat Model of Type 2 Diabetes Mellitus: Drug Interactions with Metformin. *Biology* 2020, 9, 6. [[CrossRef](#)] [[PubMed](#)]

Disclaimer/Publisher's Note: The statements, opinions and data contained in all publications are solely those of the individual author(s) and contributor(s) and not of MDPI and/or the editor(s). MDPI and/or the editor(s) disclaim responsibility for any injury to people or property resulting from any ideas, methods, instructions or products referred to in the content.