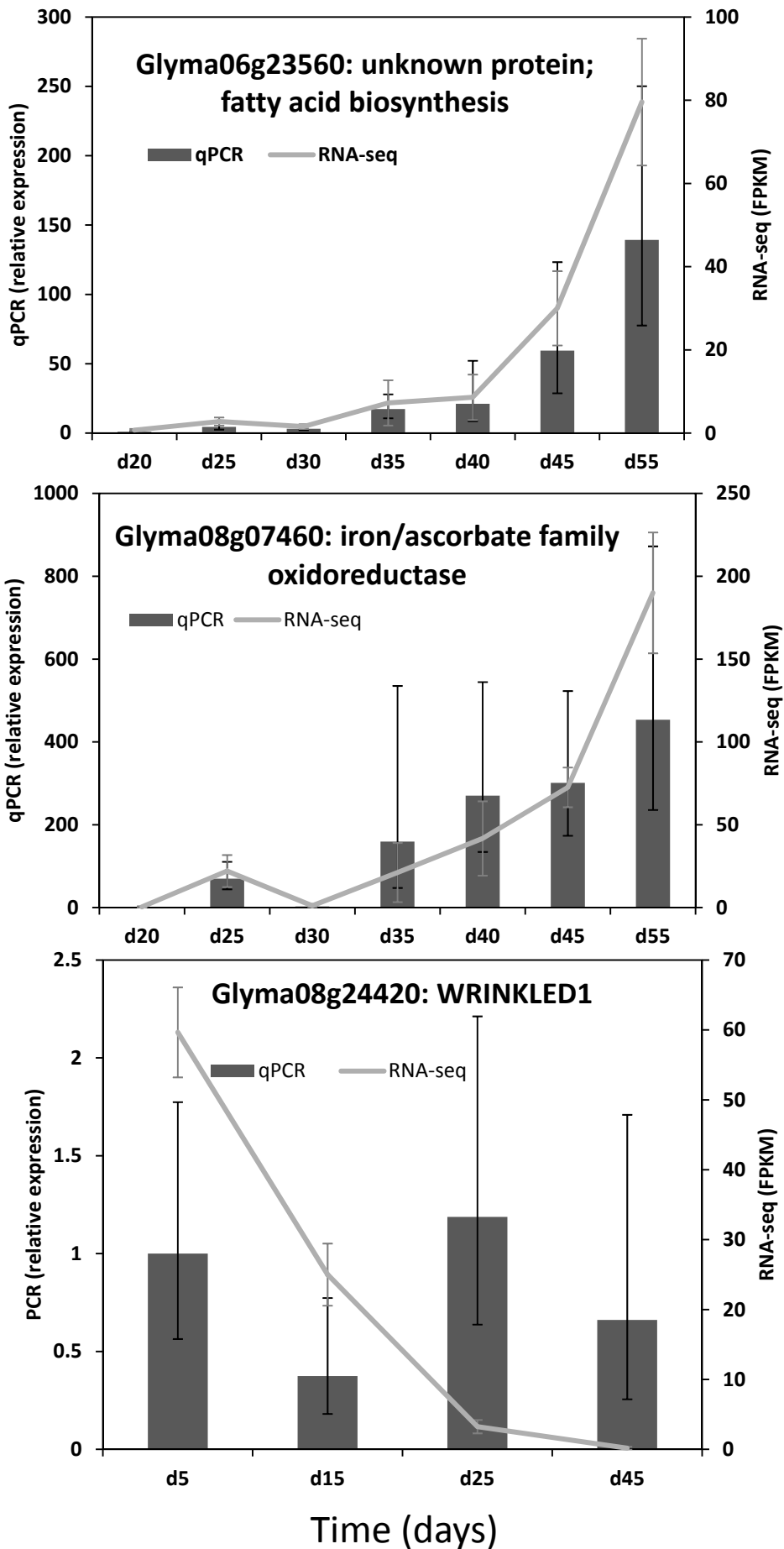
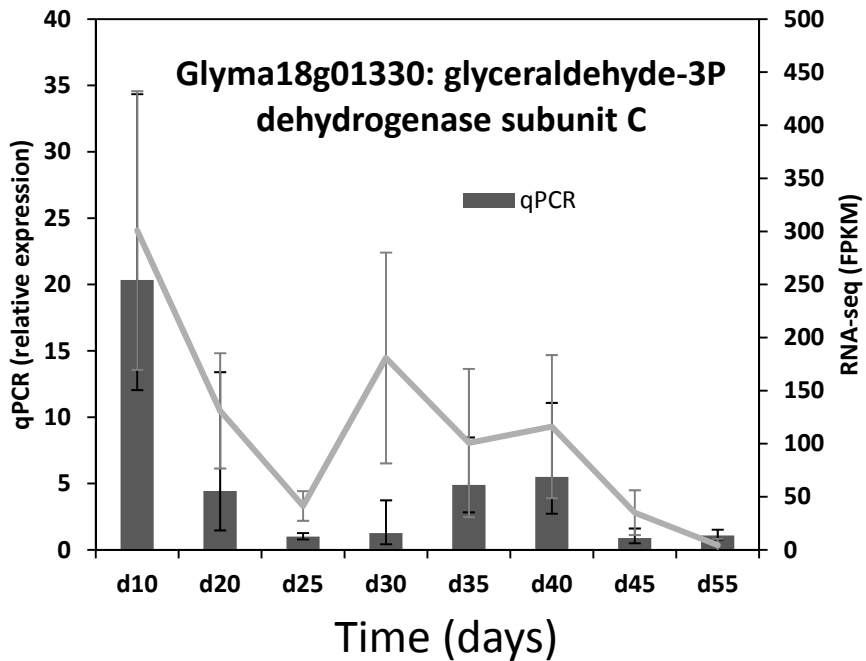
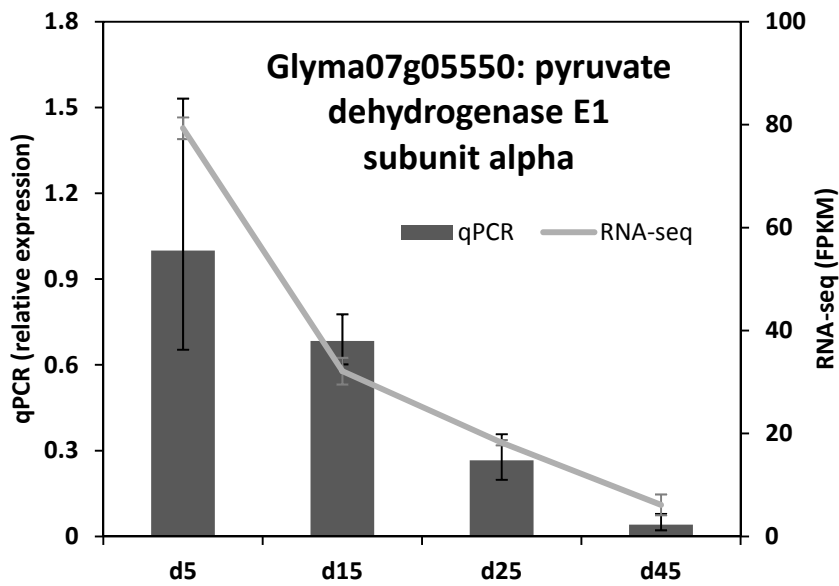
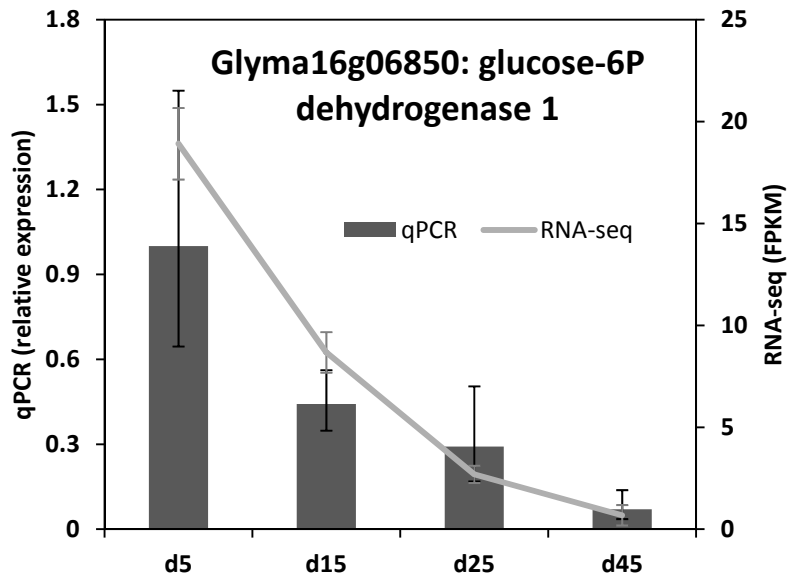
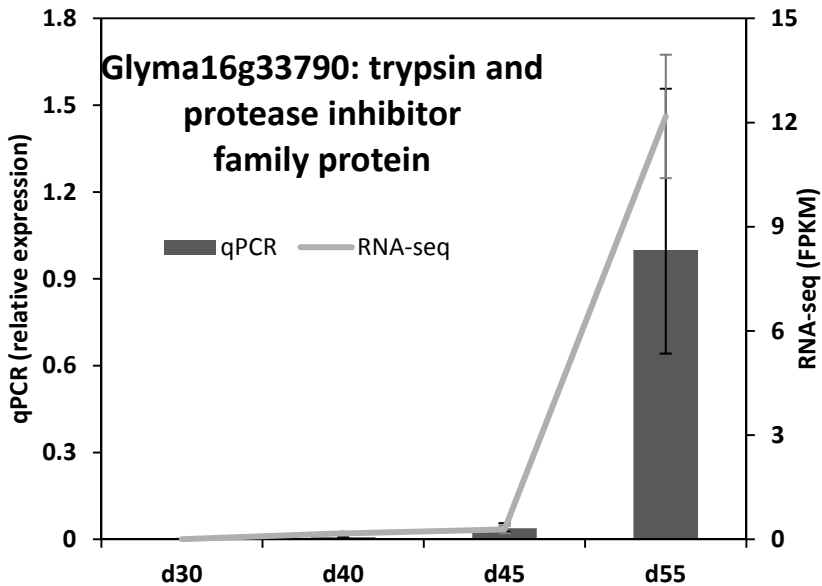
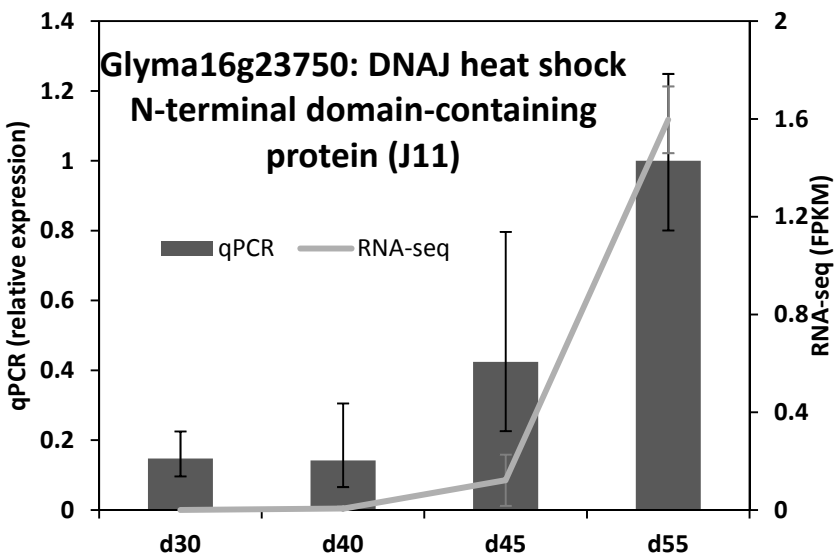
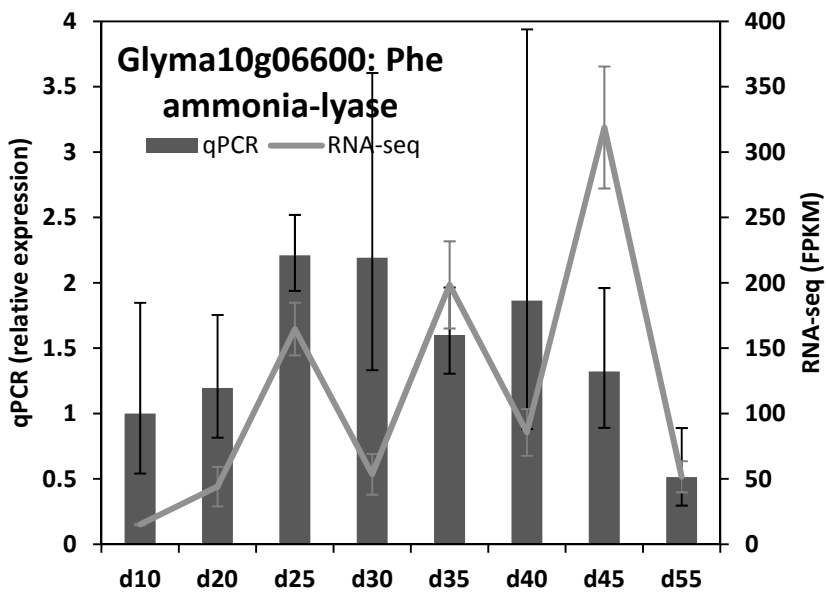


Figure S1. Validation of relative expression of gene and isoform expression obtained from RNA-seq by qPCR. RNA-seq and qPCR analyses were performed as described in the Experimental Section. Relative (qPCR) and FPKM (RNA-seq) expression values are presented as an average \pm SD of three biological replicates.

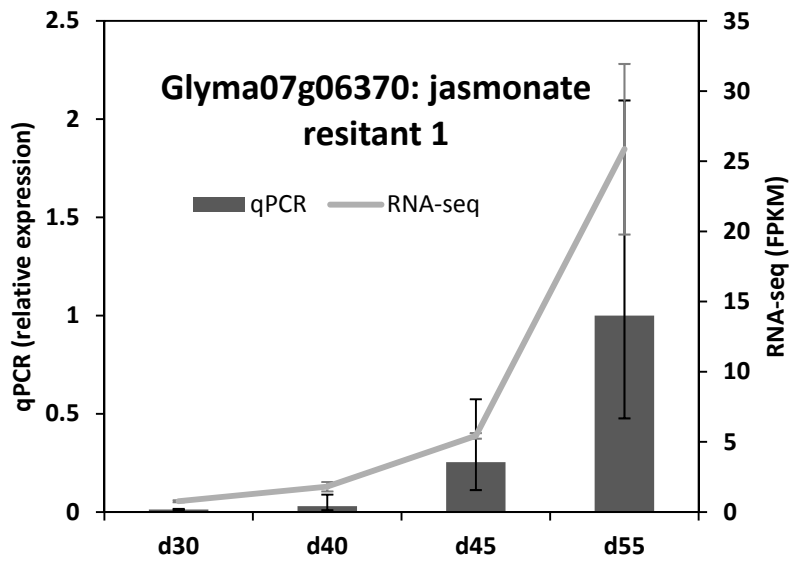
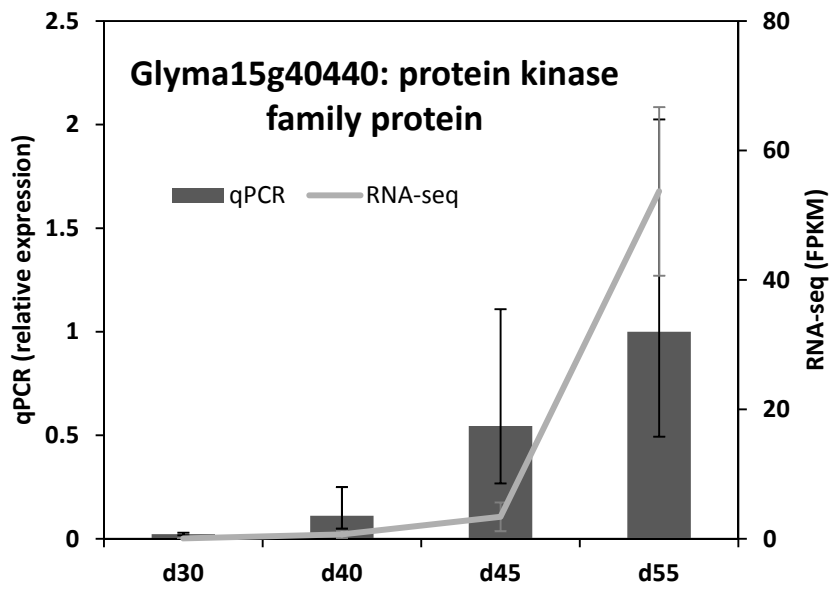
Genes





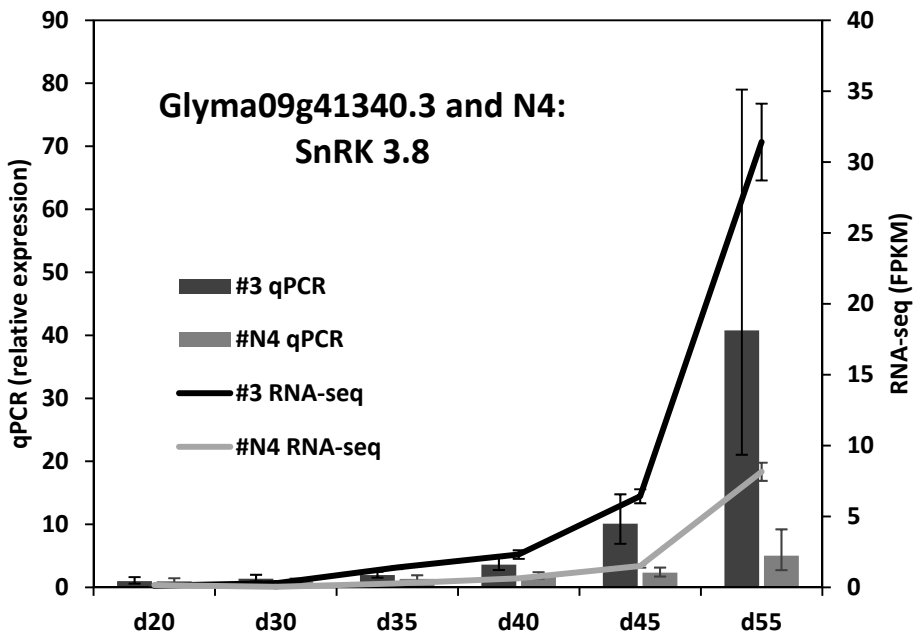
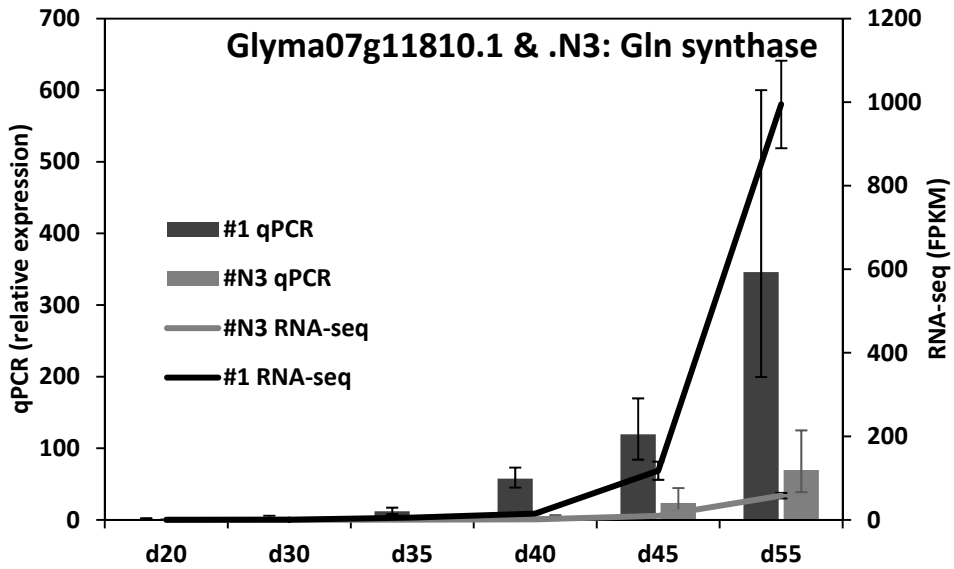


Time (days)

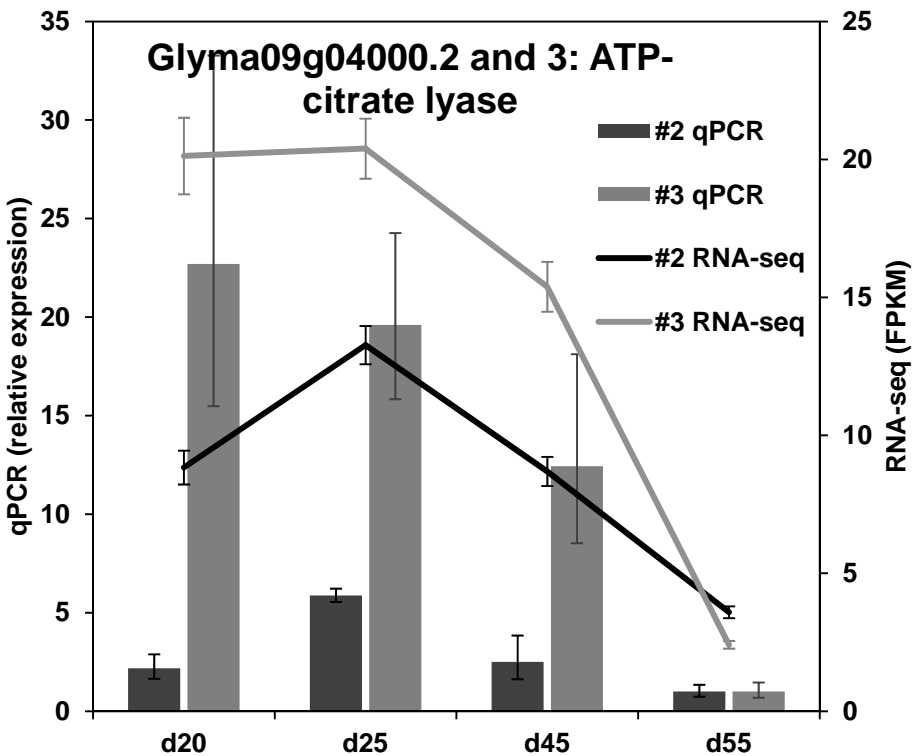
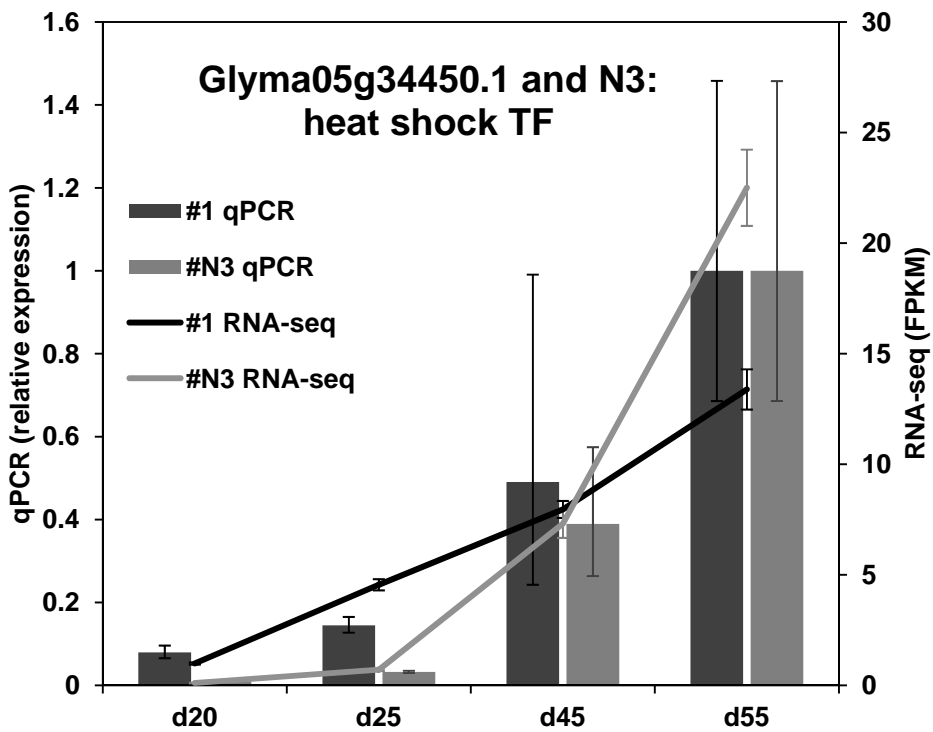


Time (days)

Splice variants



Time (days)



Time (days)