

Supplementary Materials

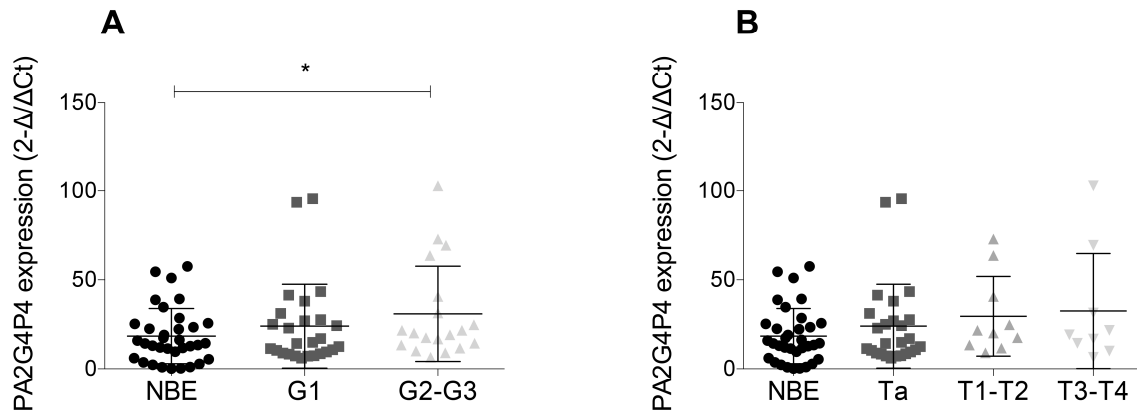


Figure S1. PA2G4P4 expression in BICa tissues. PA2G4P4 expression level in NBE samples and BICa according to their grading (A) and staging (B) stratification. P-values were obtained using the non-parametric Mann–Whitney U test (* $p < 0.05$).

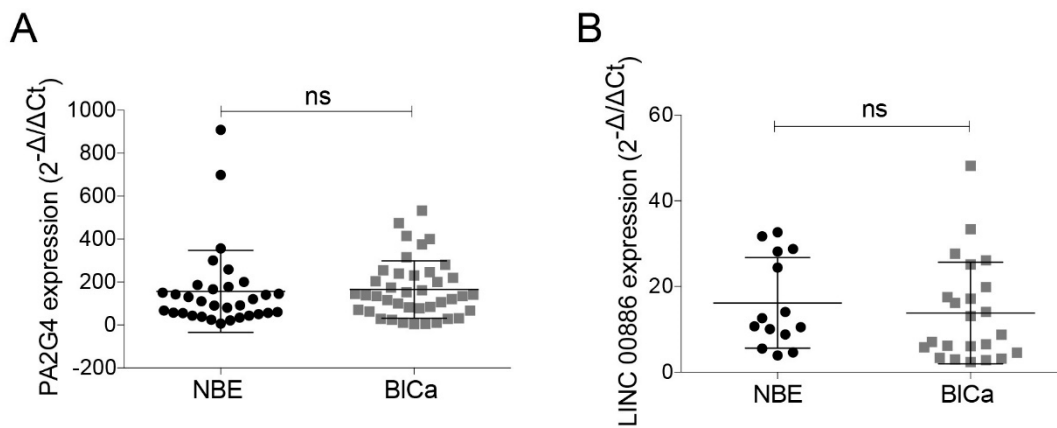


Figure S2. PA2G4 and LINC00886 expression in BICa tissues. (A) PA2G4 and (B) LINC00886 mRNA quantification assessed by RT-qPCR. BICa, bladder cancer; PA2G4P4, proliferation-associated 2G4 pseudogene 4; NBE, normal bladder epithelium.

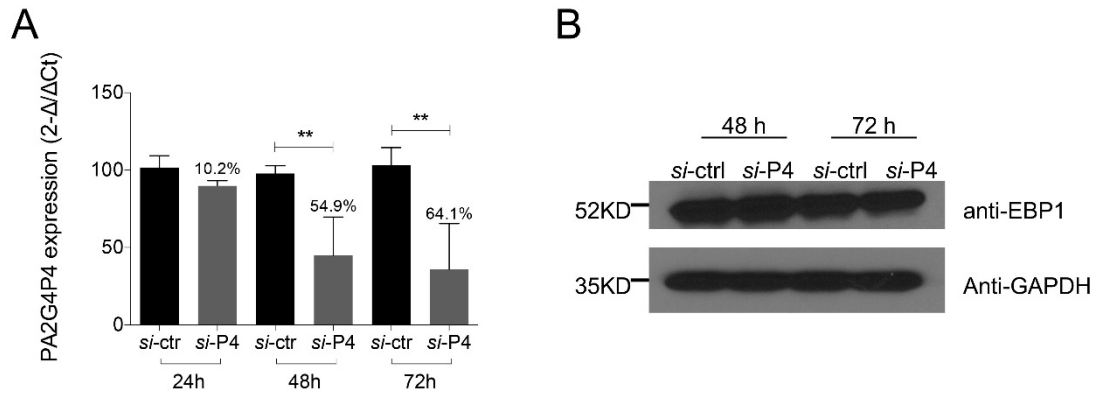


Figure S3. PA2G4P4 silencing in J82 cell line. **(A)** Analysis of PA2G4P4 mRNA depletion 48 and 72 h after J82 transfection with specific si-P4 (** $p < 0.005$). **(B)** Western blot performed using anti-EBP1 and anti GAPDH antibodies. The analysis was PA2G4P4, proliferation-associated 2G4 pseudogene 4; EBP1, ErbB3-binding protein 1.