

Supporting information

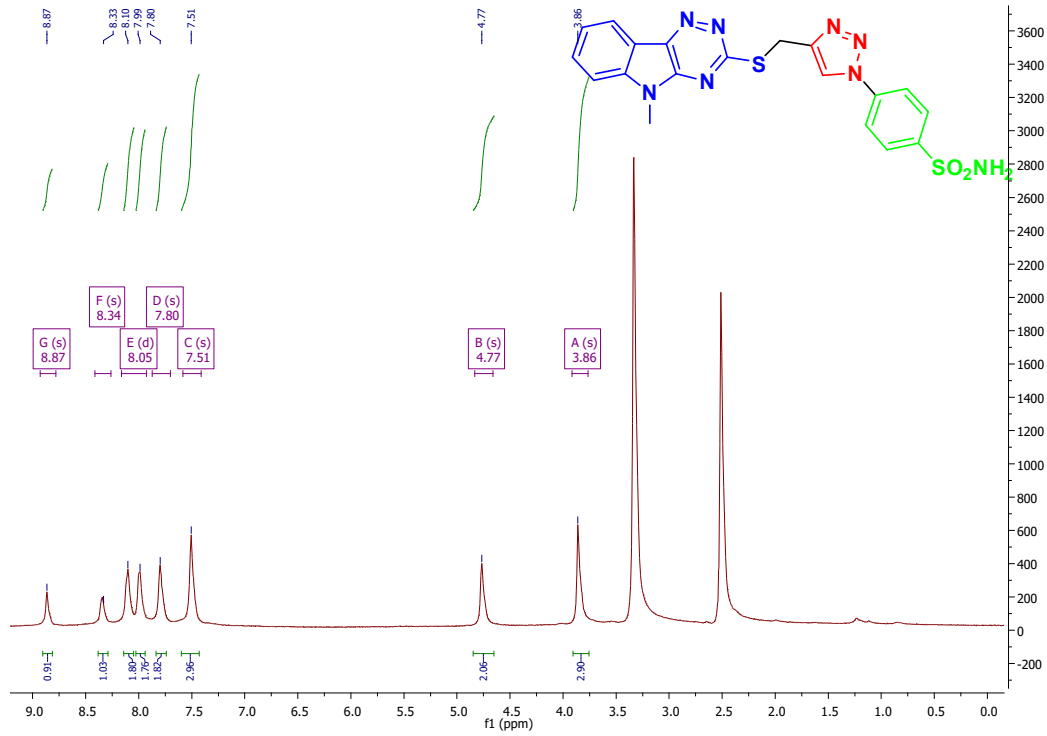
Design, synthesis and biological evaluation of 1,2,3-triazole linked triazino[5,6-b]indole-benzene sulfonamide conjugates as potent carbonic anhydrase II, IX and XIII inhibitors

Krishna Kartheek Chinchilli^a, Andrea Angeli,^c Pavitra S Thacker^a, Laxman Naik Korra^a, Rashmita Biswas^a, Mohammed Arifuddin^{a,b*} and Claudiu T. Supuran^{c*}

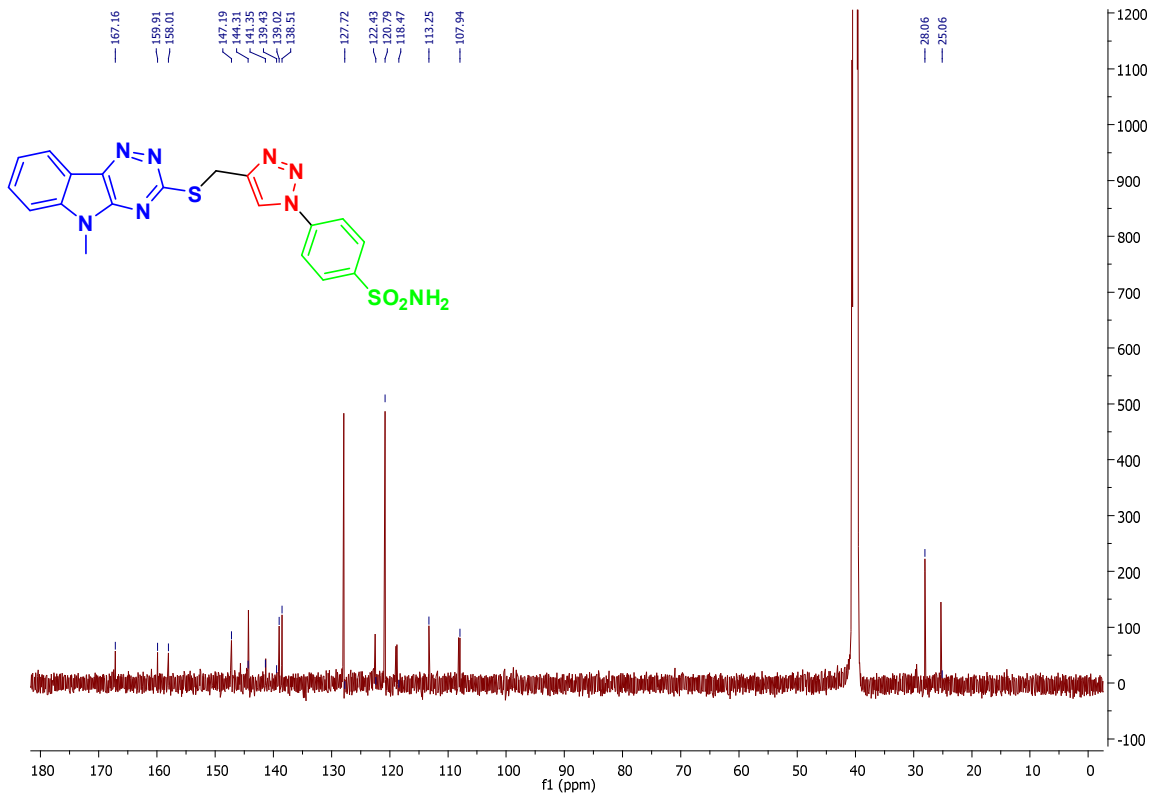
^aDepartment of Medicinal Chemistry, National Institute of Pharmaceutical Education and Research (NIPER), Balanagar, Hyderabad 500037, India

^bDepartment of Chemistry, Anwarul Uloom College, 11-3-918, New Malleyally, Hyderabad-500001, T. S., India (Present Address)

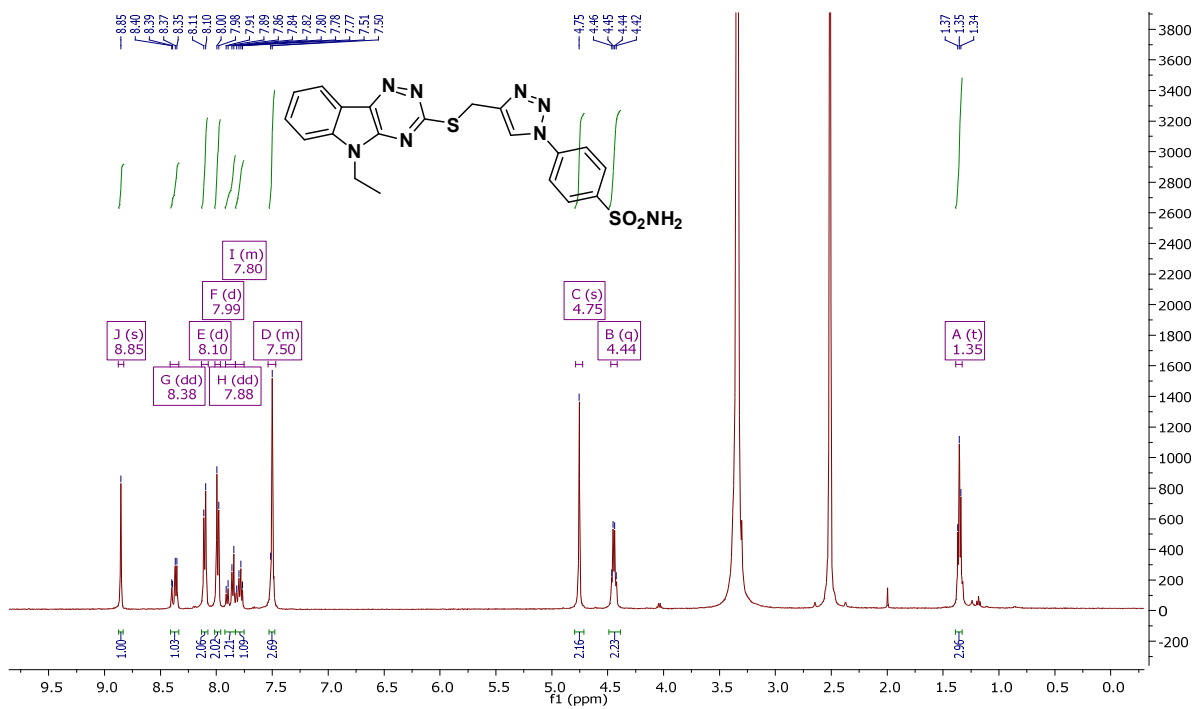
^cUniversità degli Studi di Firenze, Neurofarba Dept., Sezione di Scienze Farmaceutiche e Nutraceutiche, Via Ugo Schiff 6, 50019 Sesto Fiorentino, Florence, Italy



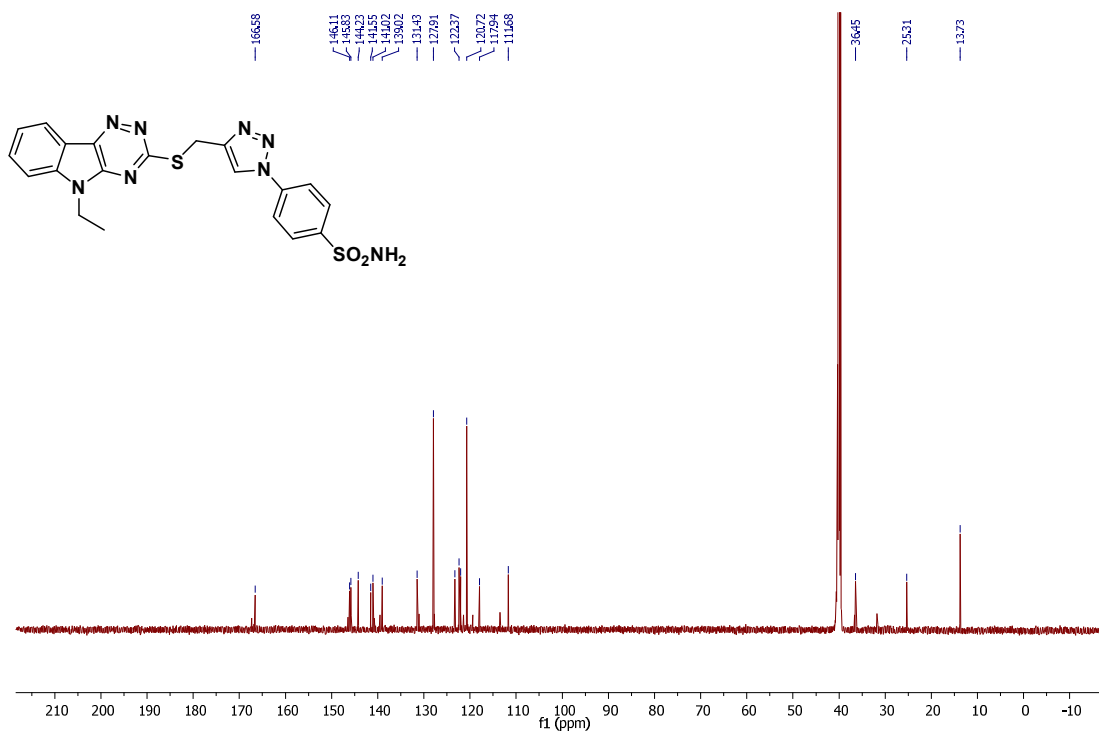
¹H NMR spectra of 6a



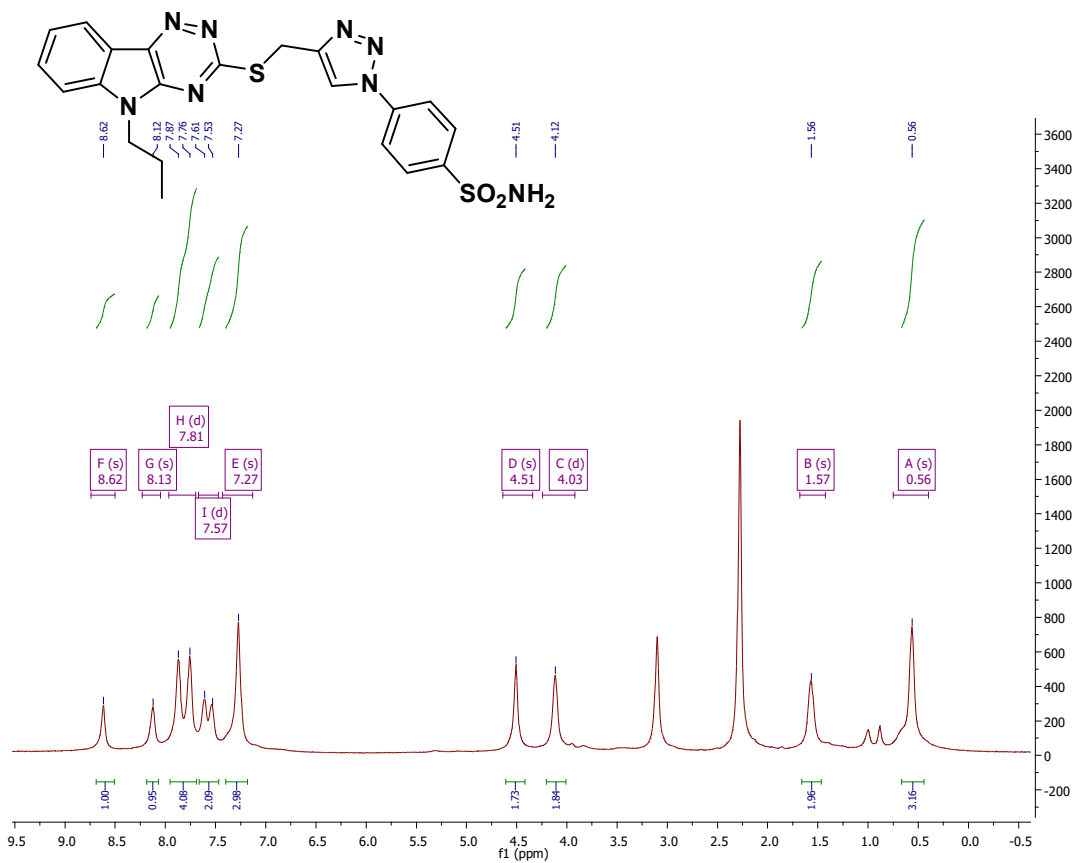
¹³C NMR spectra of 6a



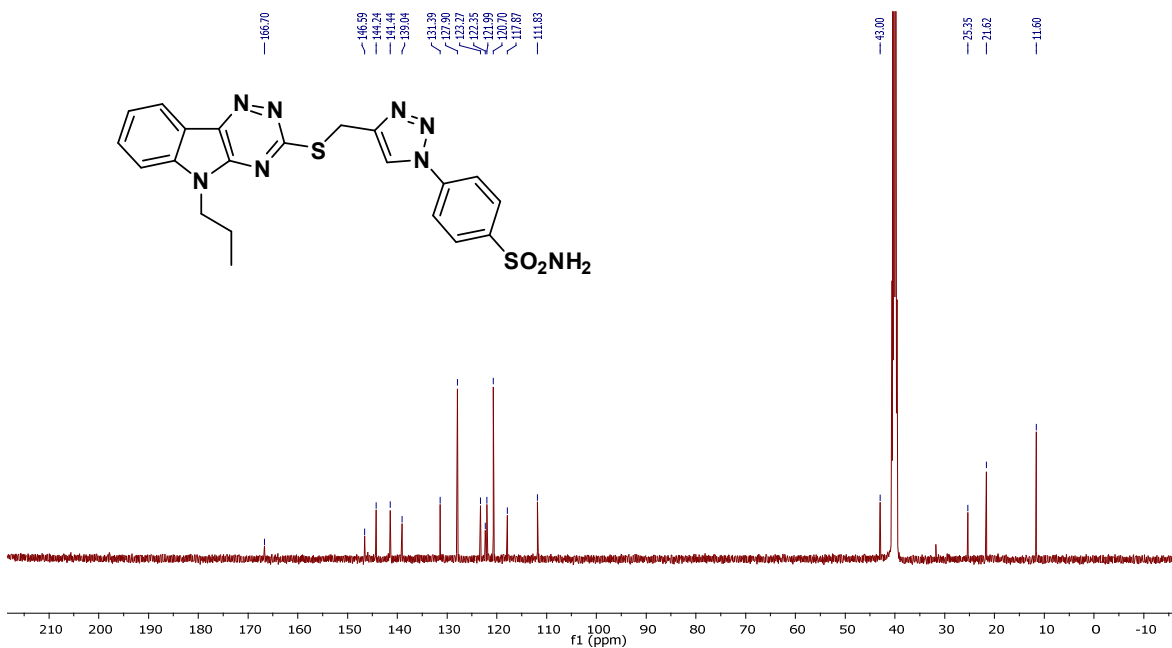
¹H NMR spectra of 6b



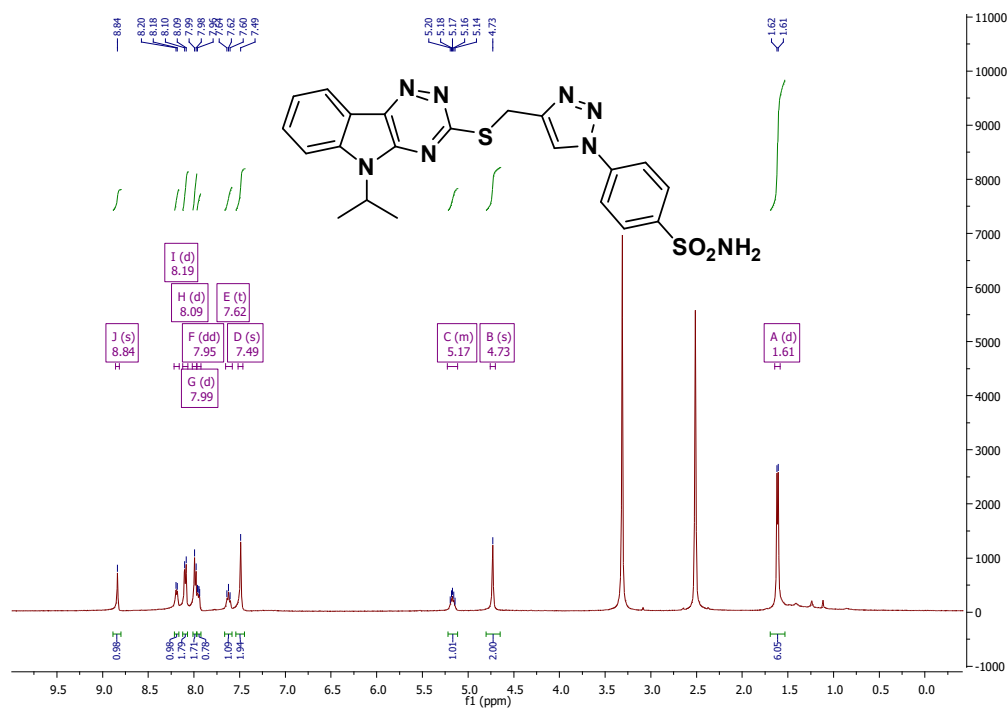
¹³C NMR spectra of 6b



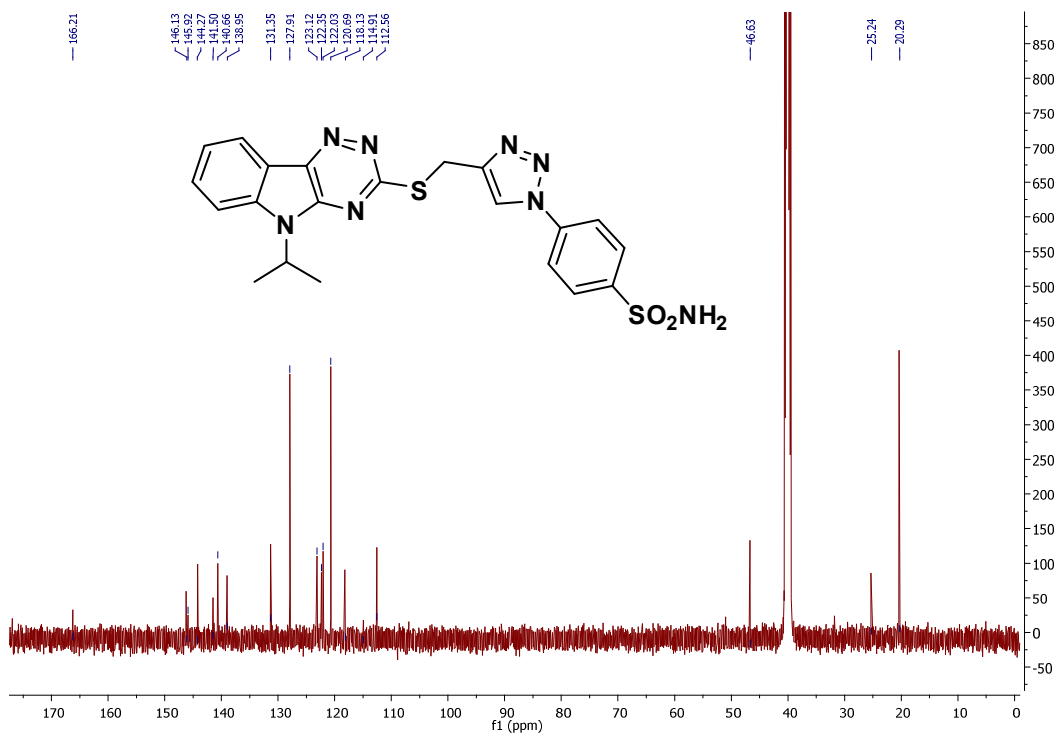
¹H NMR spectra of 6c



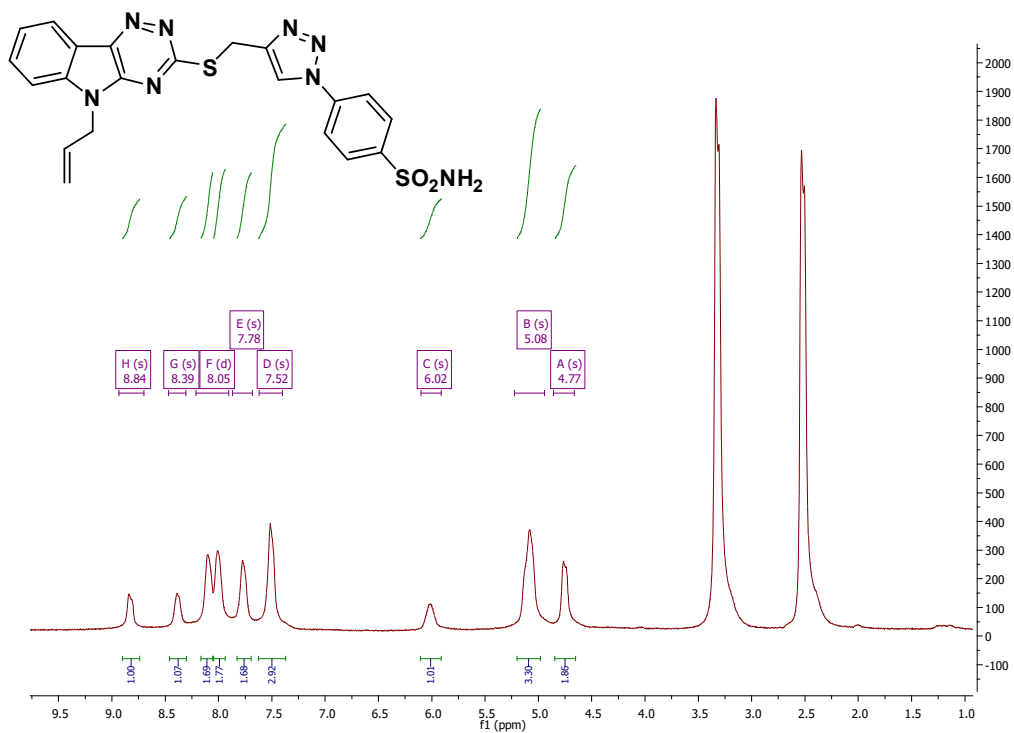
¹³C NMR spectra of 6c



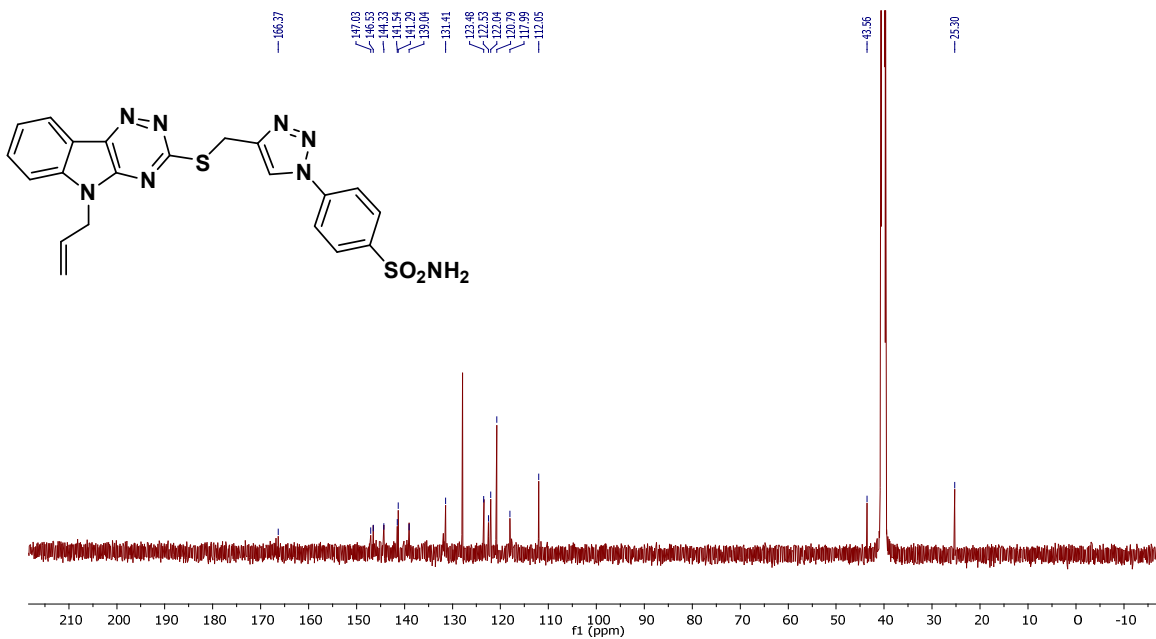
1H NMR spectra of 6d



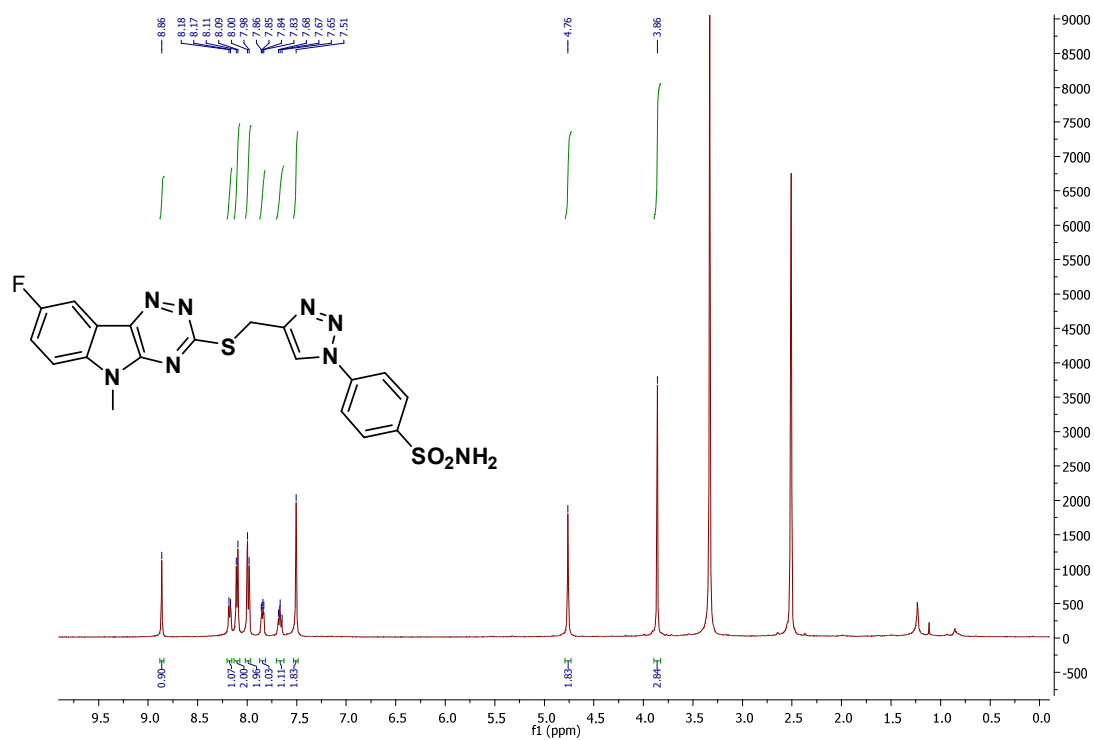
13C NMR spectra of 6d



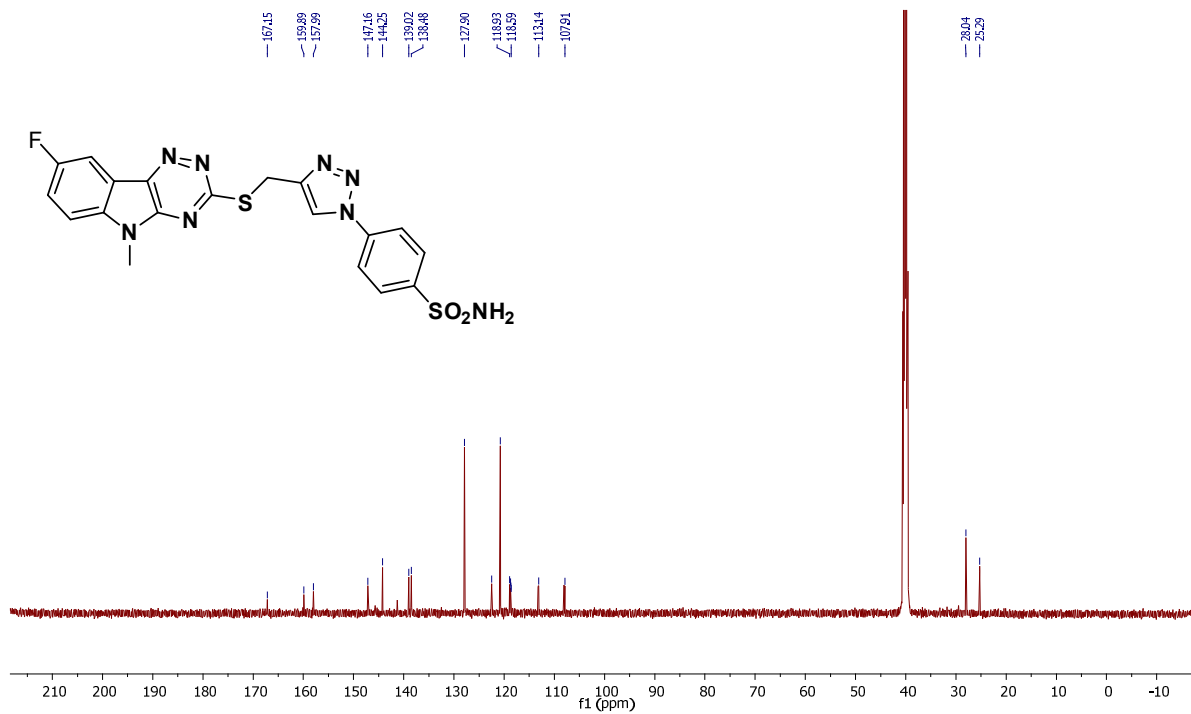
¹H NMR spectra of 6e



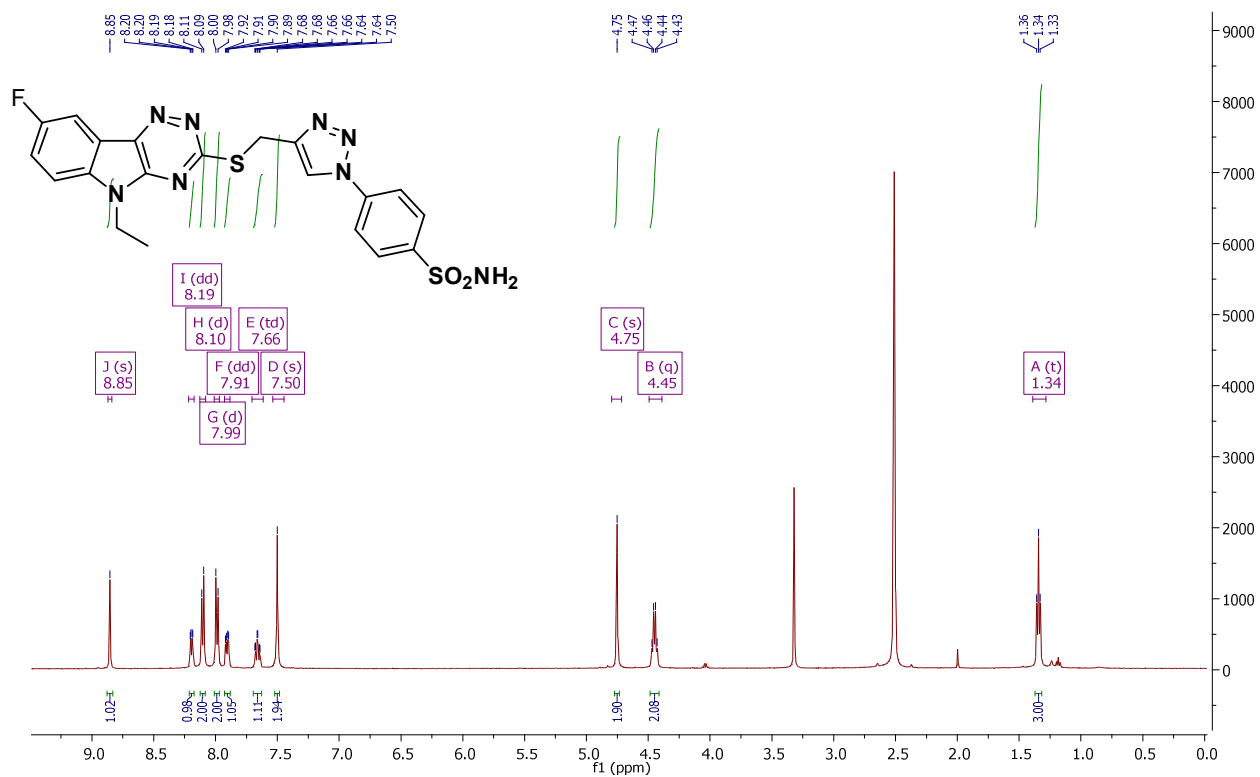
¹³C NMR spectra of 6e



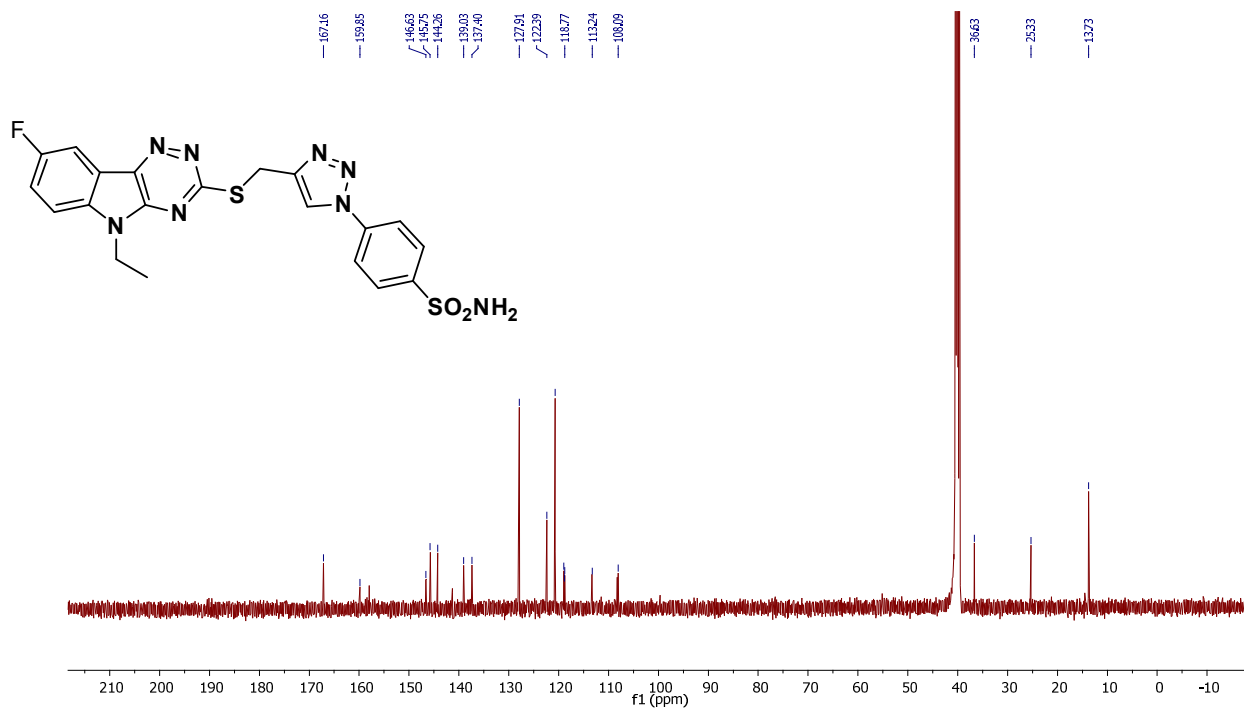
¹H NMR spectra of 6f



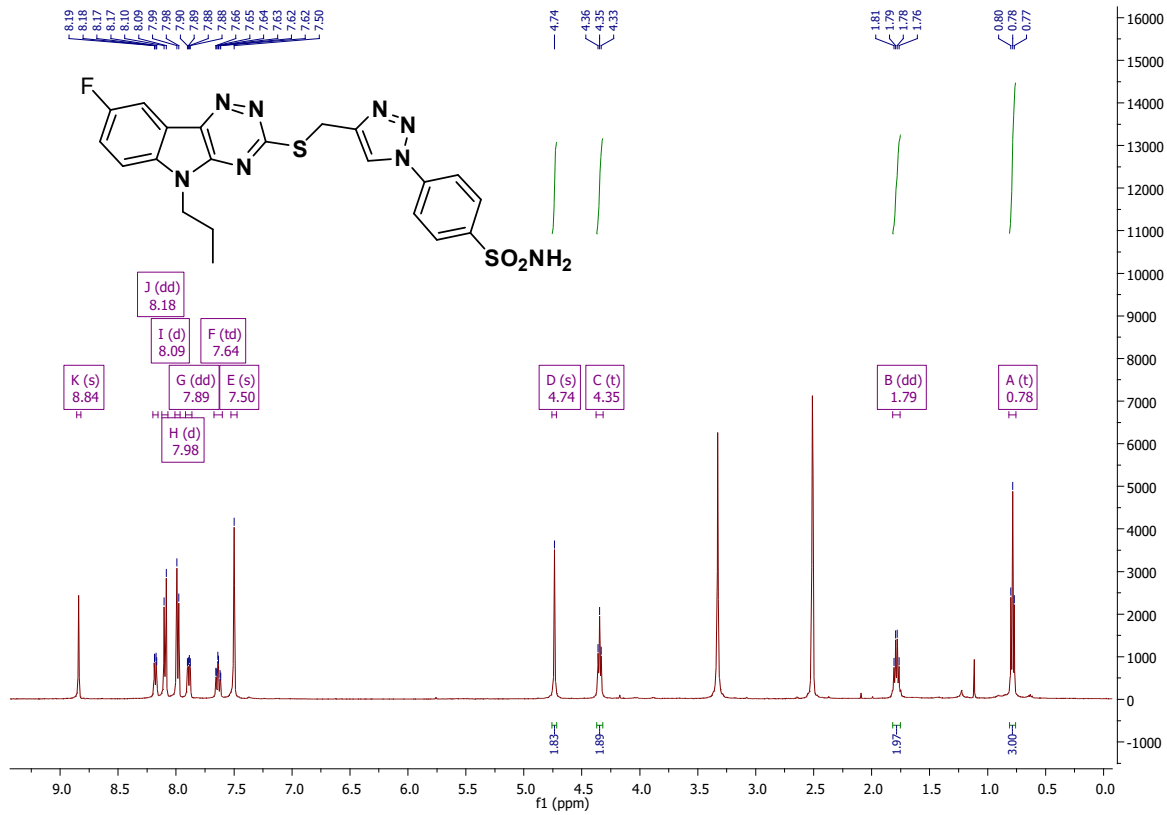
¹³C NMR spectra of 6f



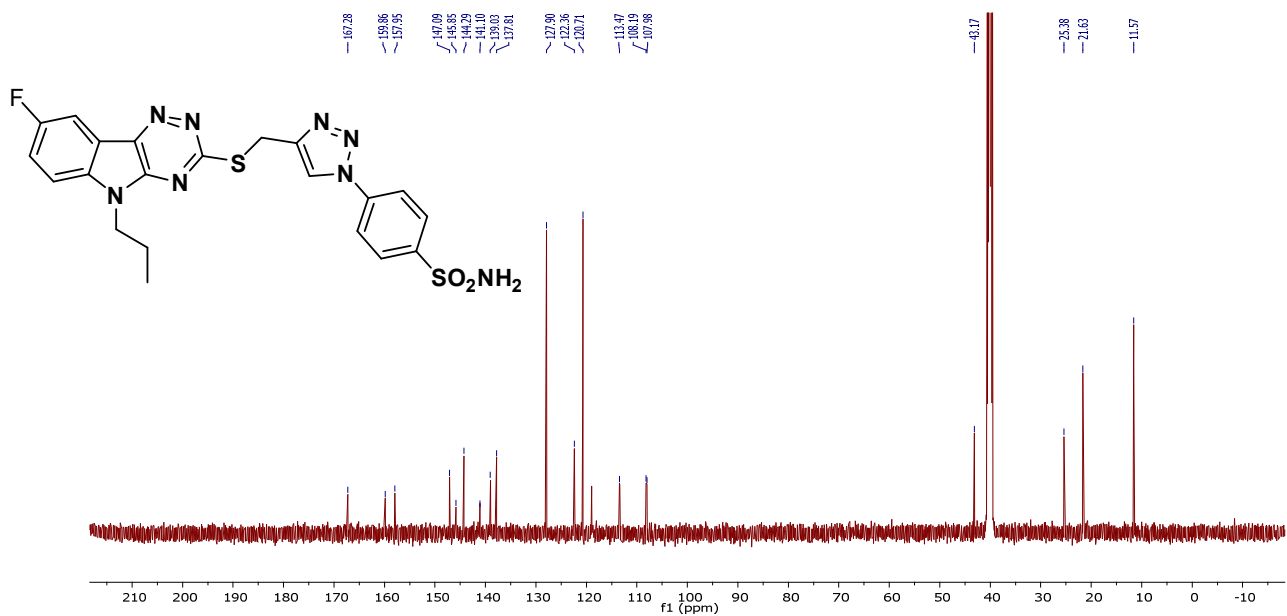
¹H NMR spectra of 6g



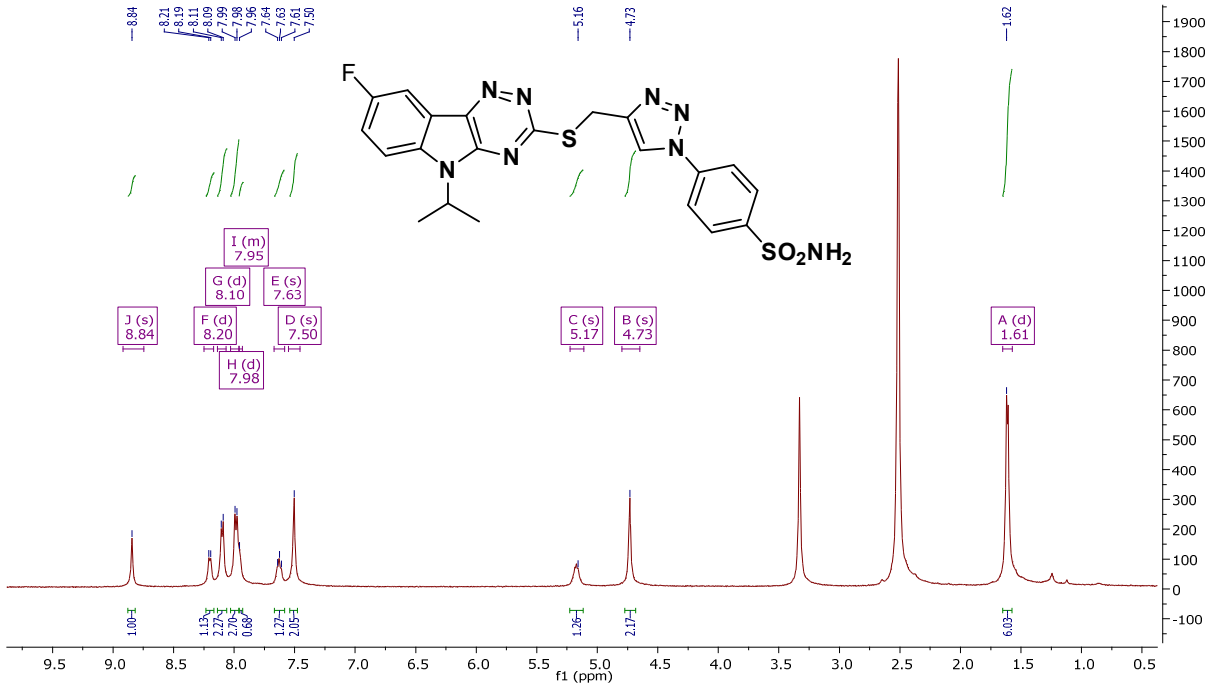
¹³C NMR spectra of 6g



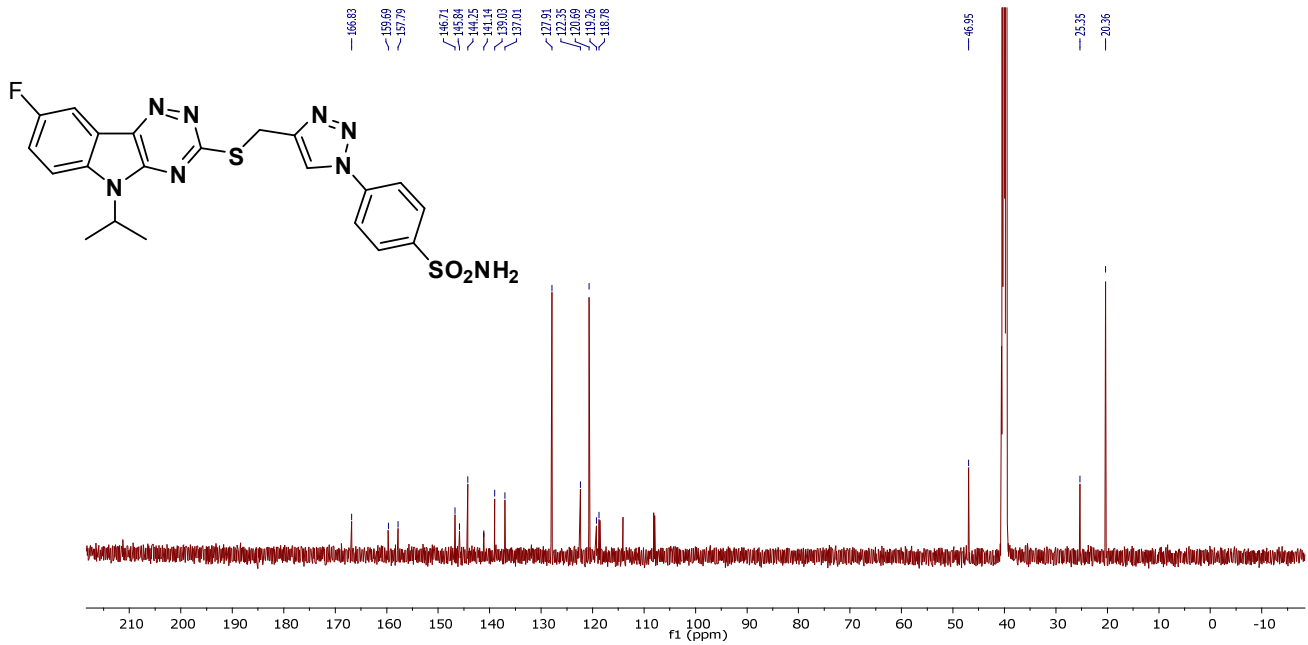
¹H NMR spectra of 6h



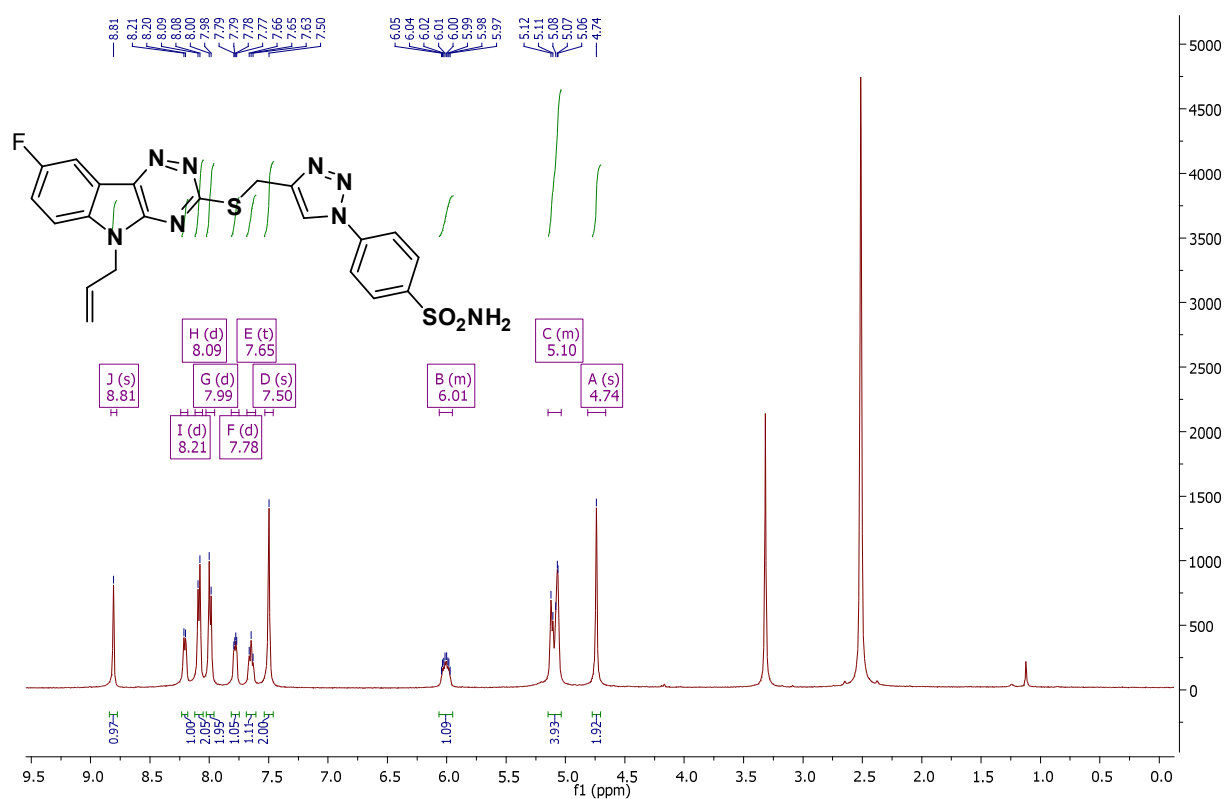
¹³C NMR spectra of 6h



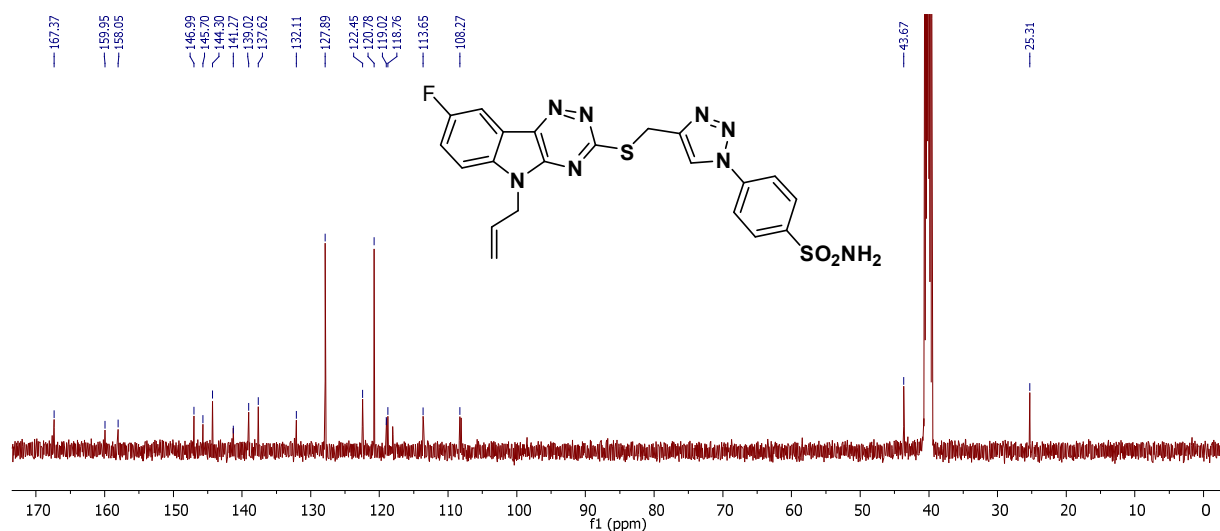
¹H NMR spectra of 6i



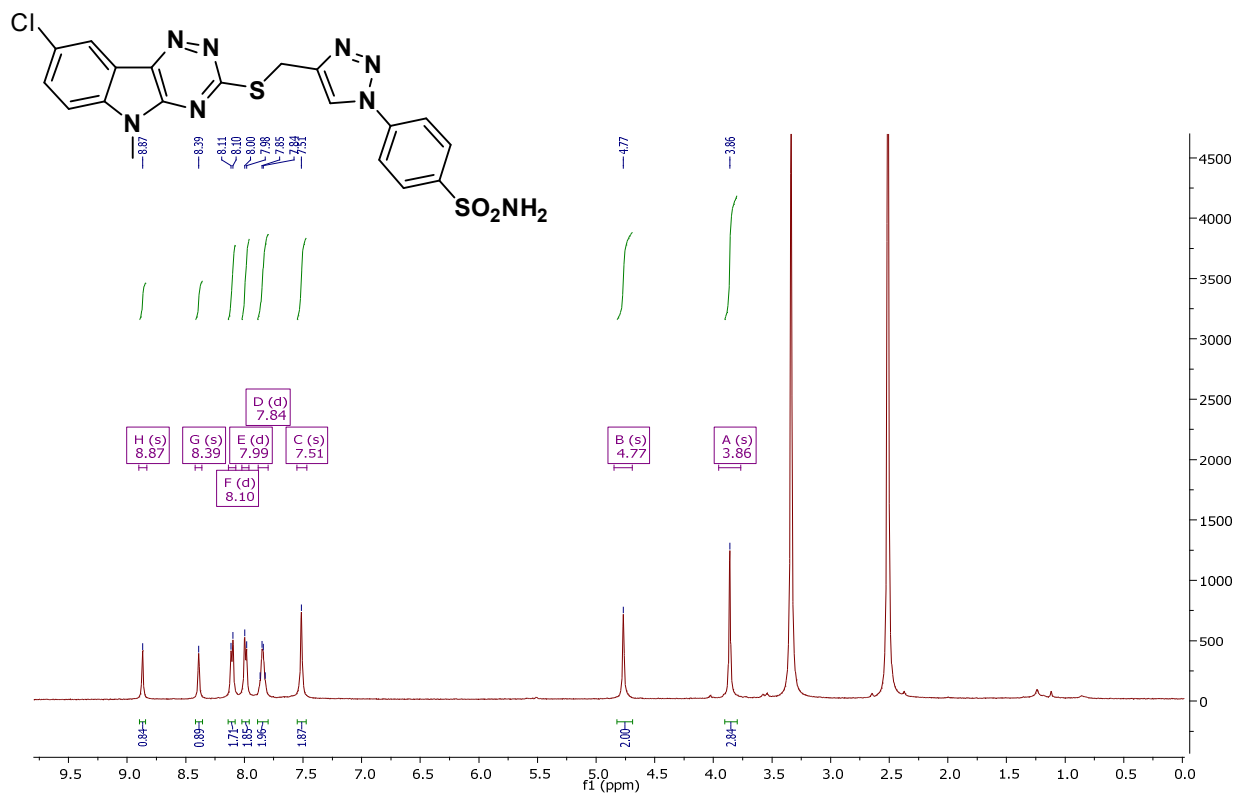
¹³C NMR spectra of 6i



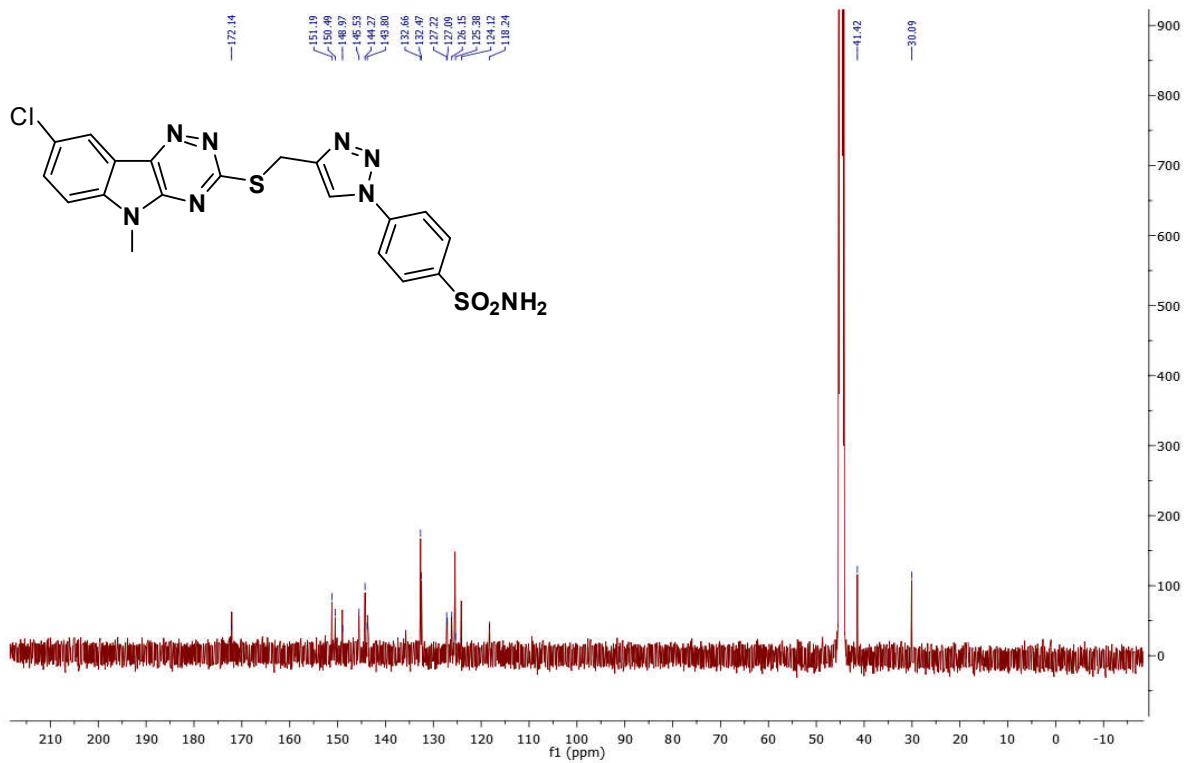
1H NMR spectra of 6j



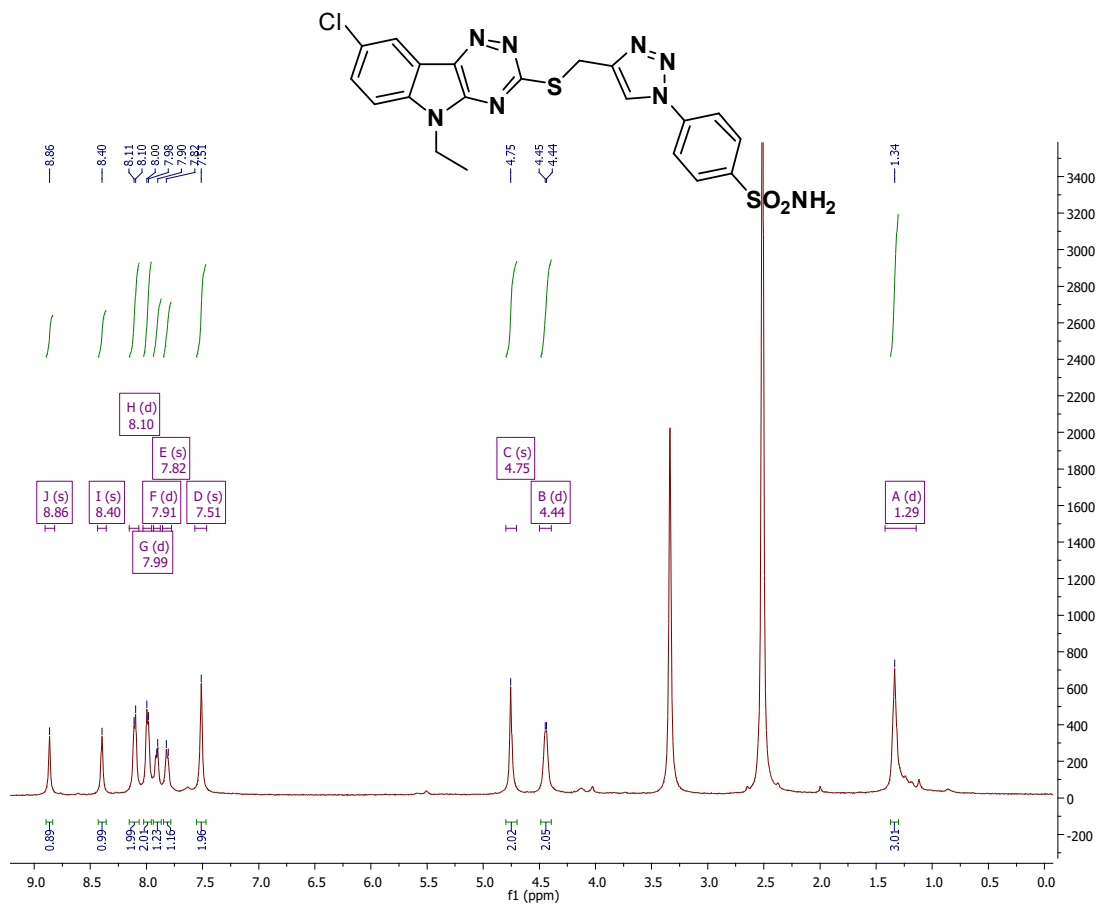
13C NMR spectra of 6j



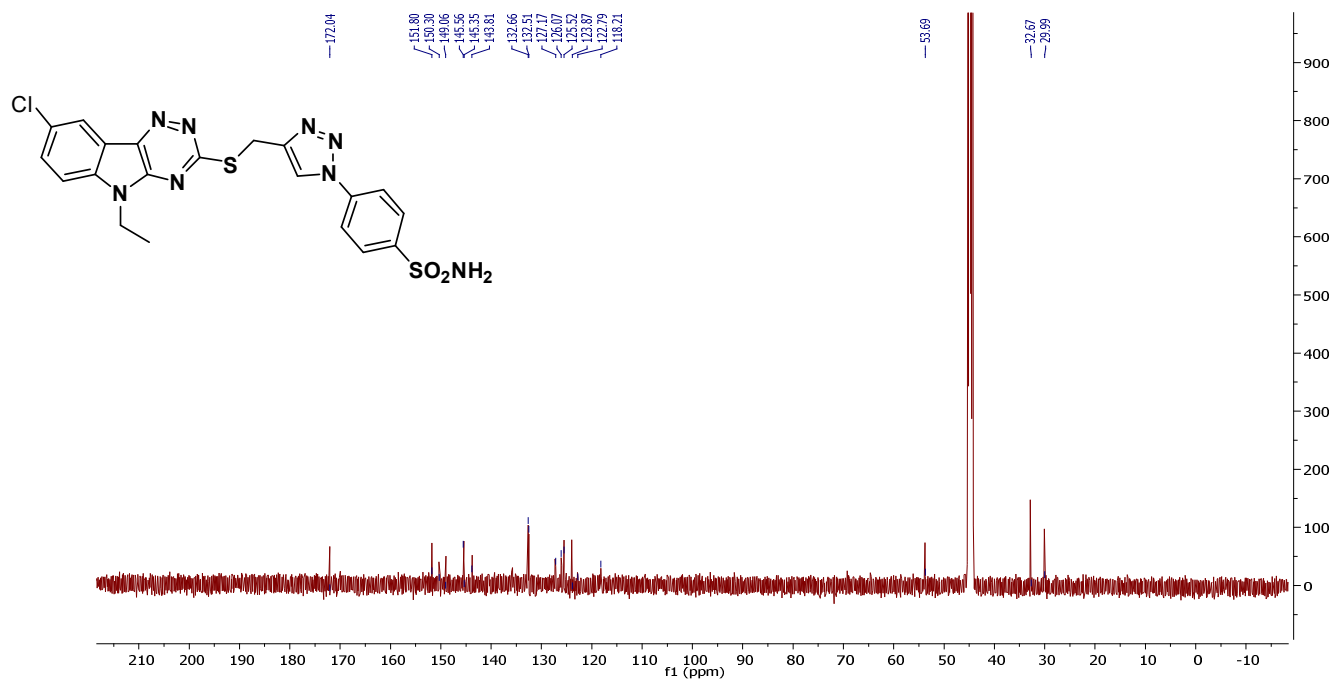
¹H NMR spectra of 6k



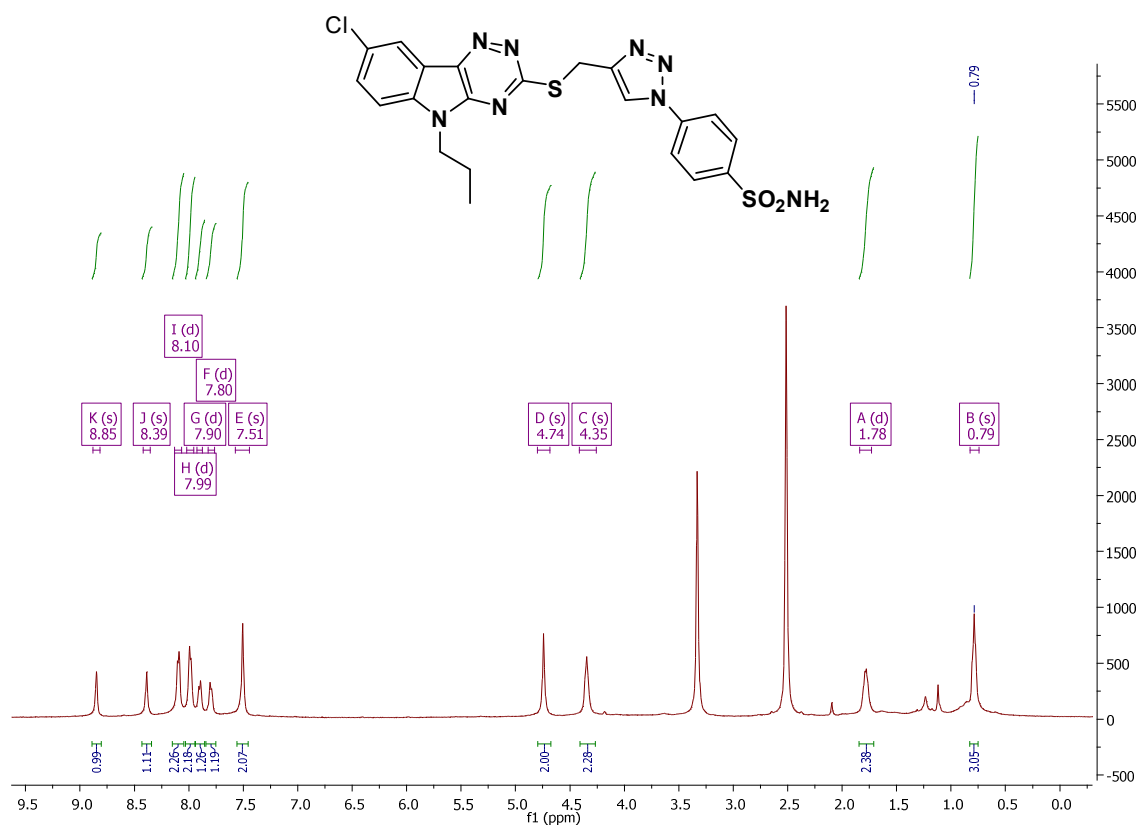
¹³C NMR spectra of 6k



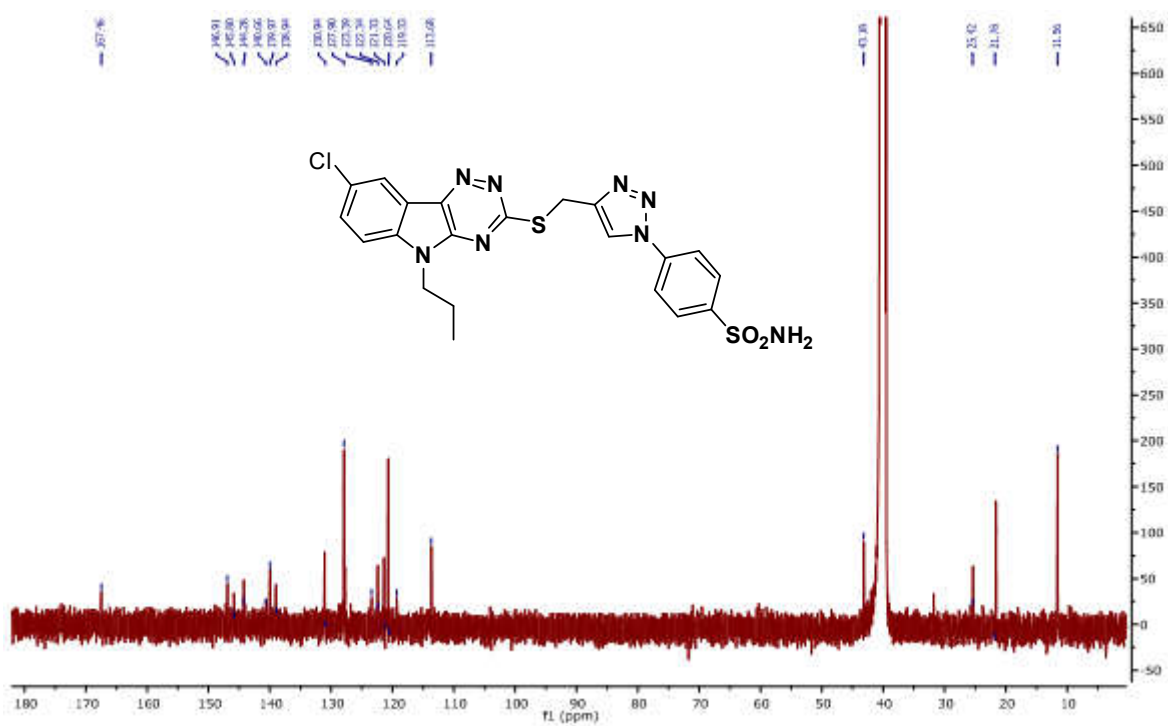
¹H NMR spectra of 61



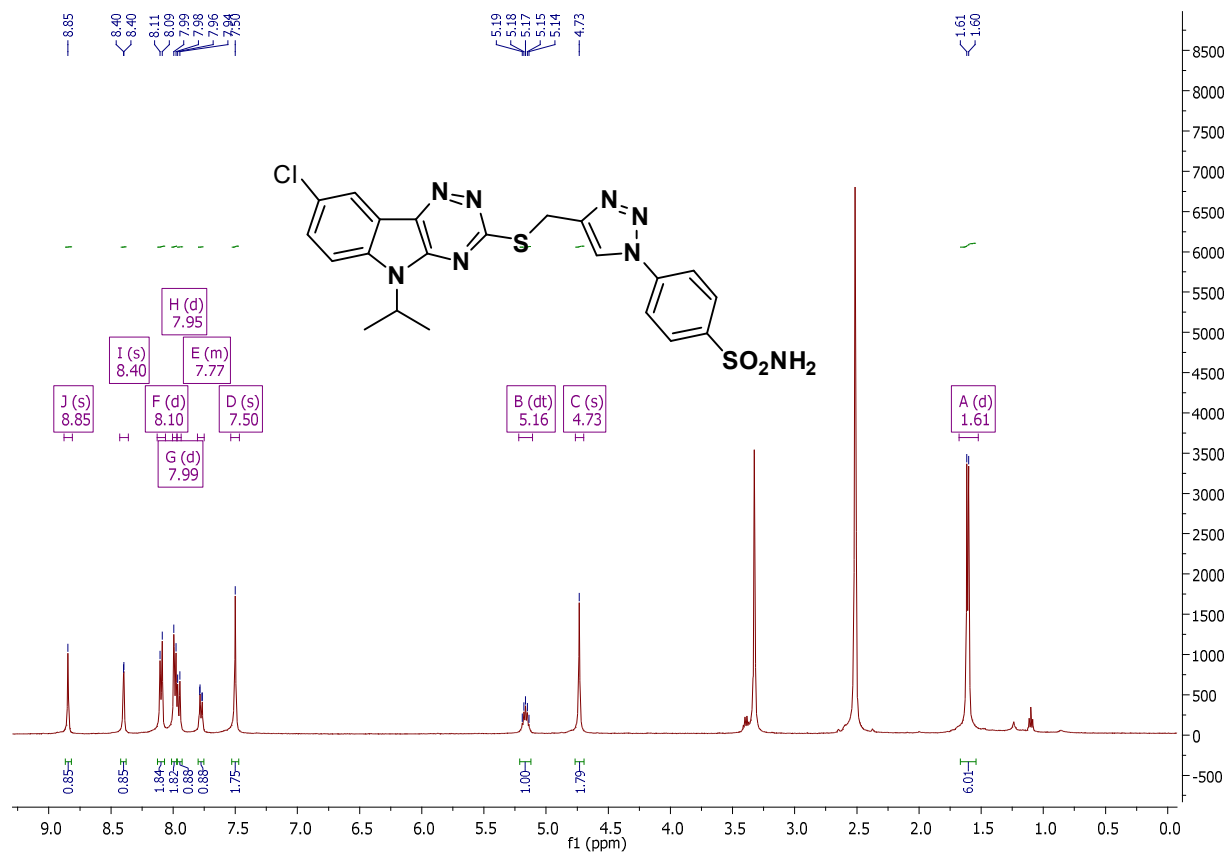
¹³C NMR spectra of 61



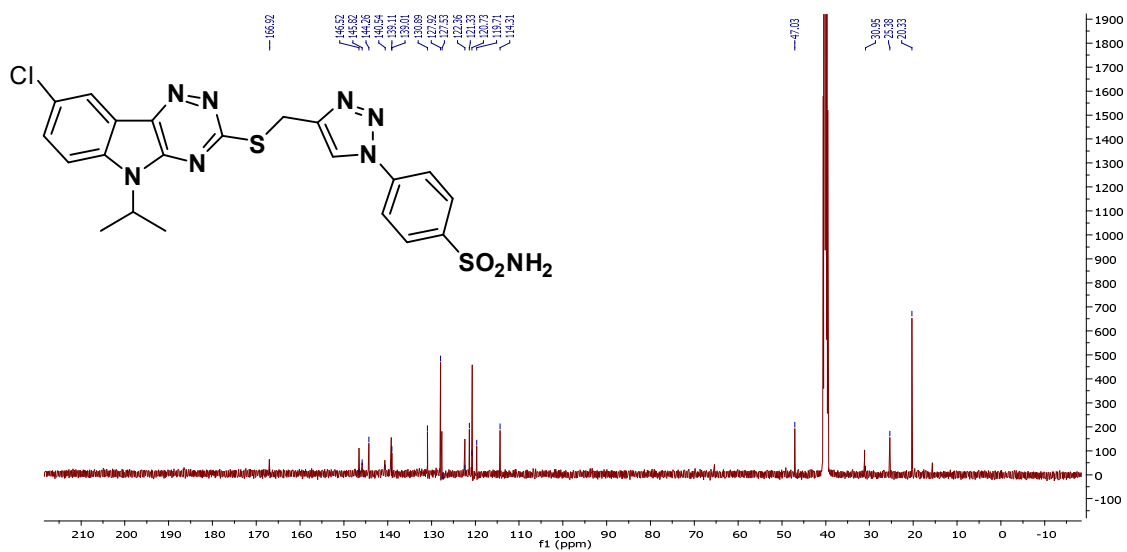
¹H NMR spectra of 6m



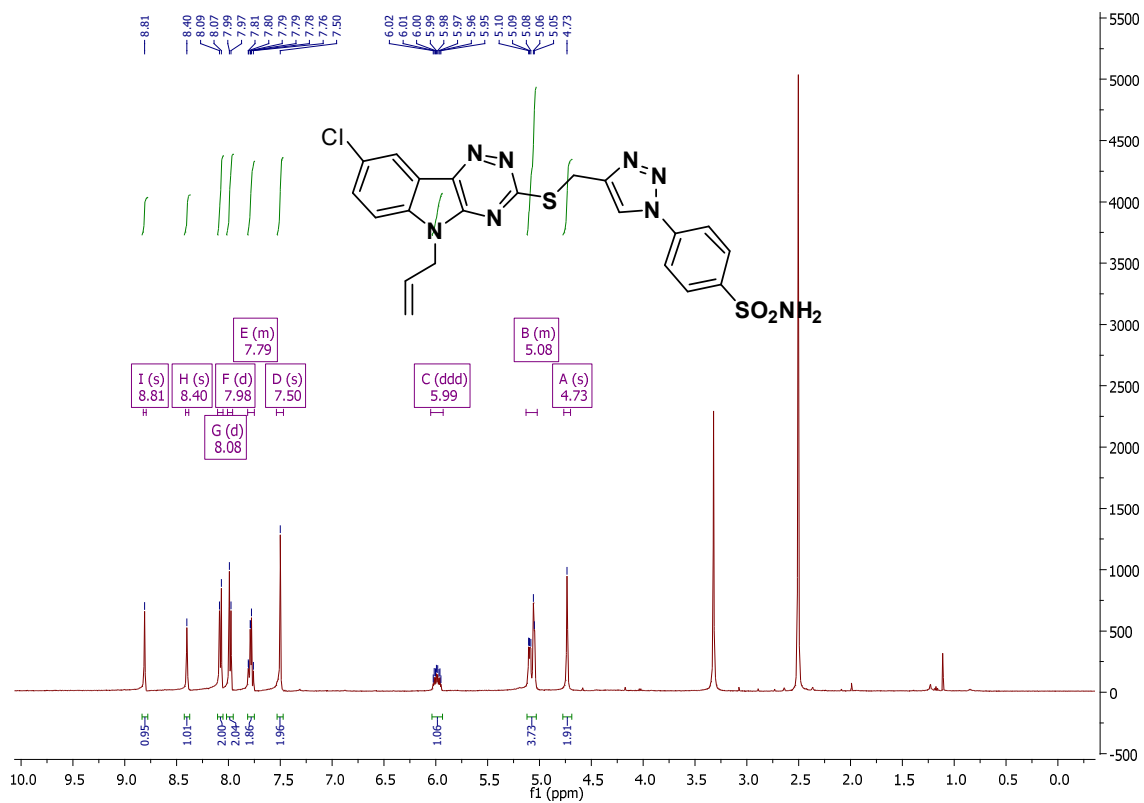
¹³C NMR spectra of 6m



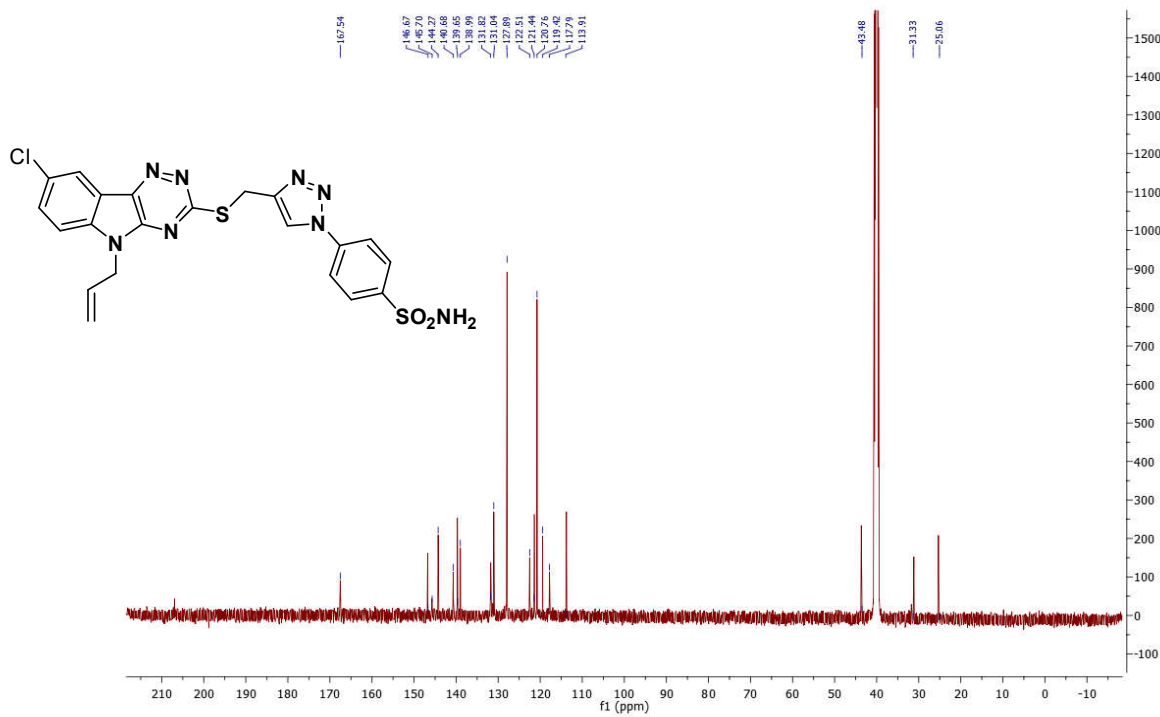
¹H NMR spectra of 6n



¹³C NMR spectra of 6n



1H NMR spectra of 60



13C NMR spectra of 60