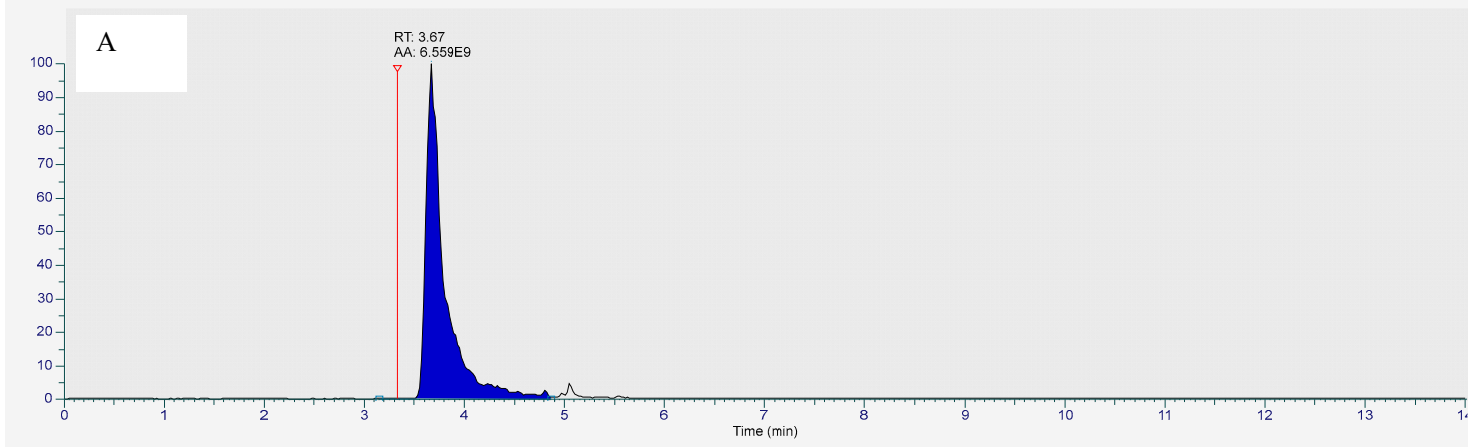


RT: 0.00-14.01



GALANTAMINE

$$Y = 0.0156144 + 1.82638 * X \quad R^2 = 0.9999 \quad W: 1/X$$

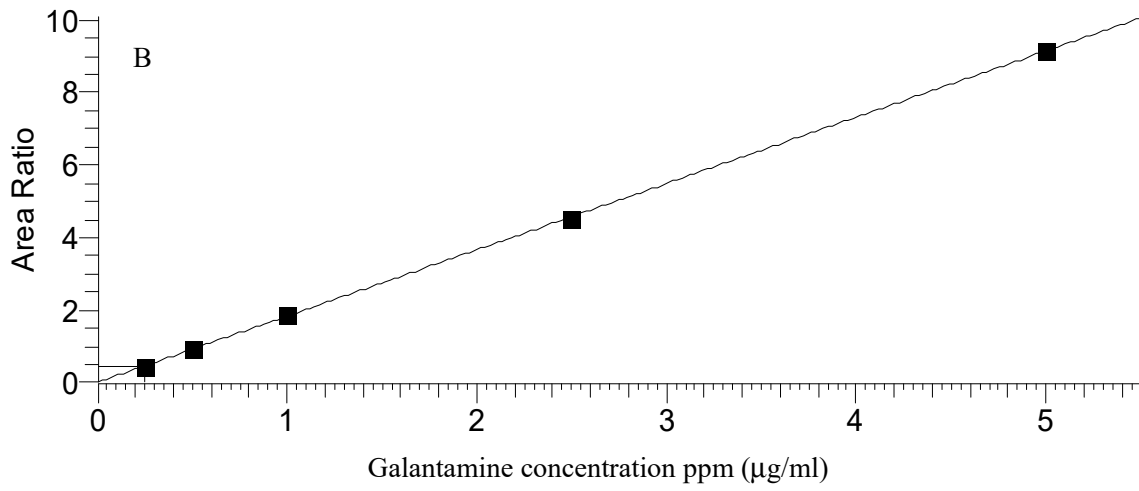


Figure S1: A) LC-MS chromatogram of Galantamine and B) calibration curve of Galantamine.

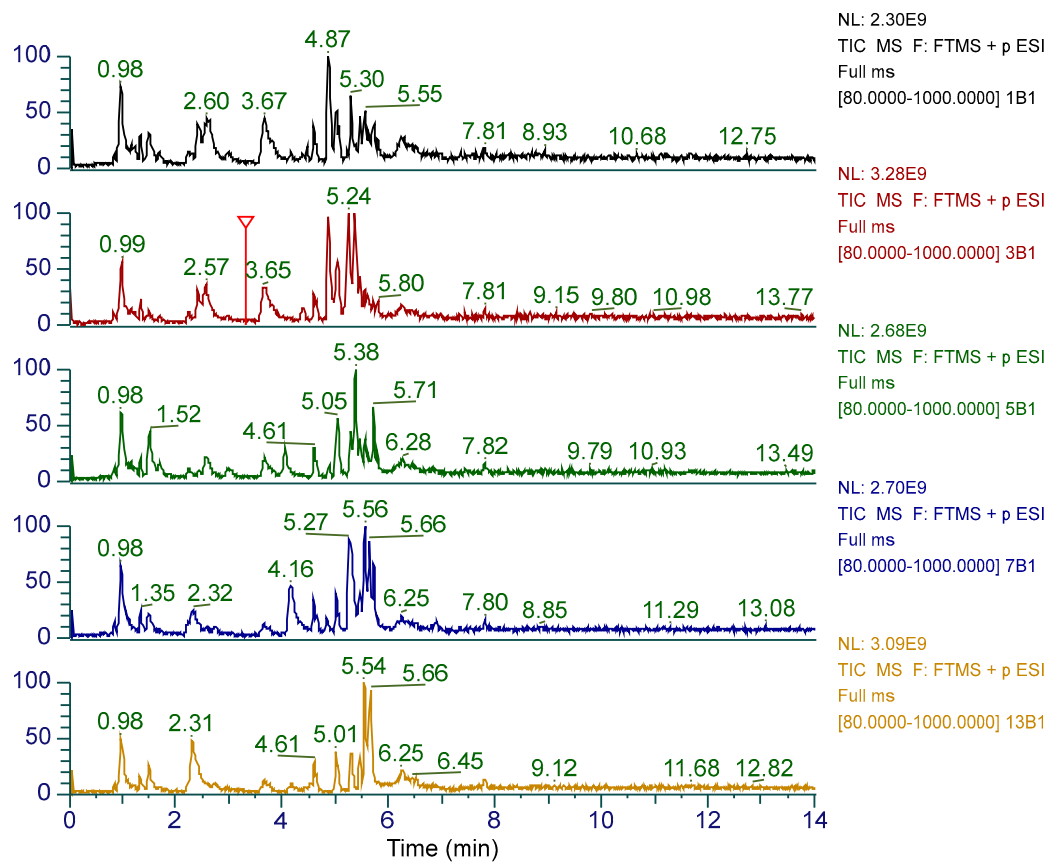


Figure S2: Total ion chromatograms (TIC) for the 5 cultivars Fortune, Carlton, Ice folce, Galil and Ziva (Black, Red, Green, Blue and Yellow chromatograms respectively). The chromatograms obtained from HR LC-MS analysis using ESI⁺ scan mode ($m/z=80-1000$).

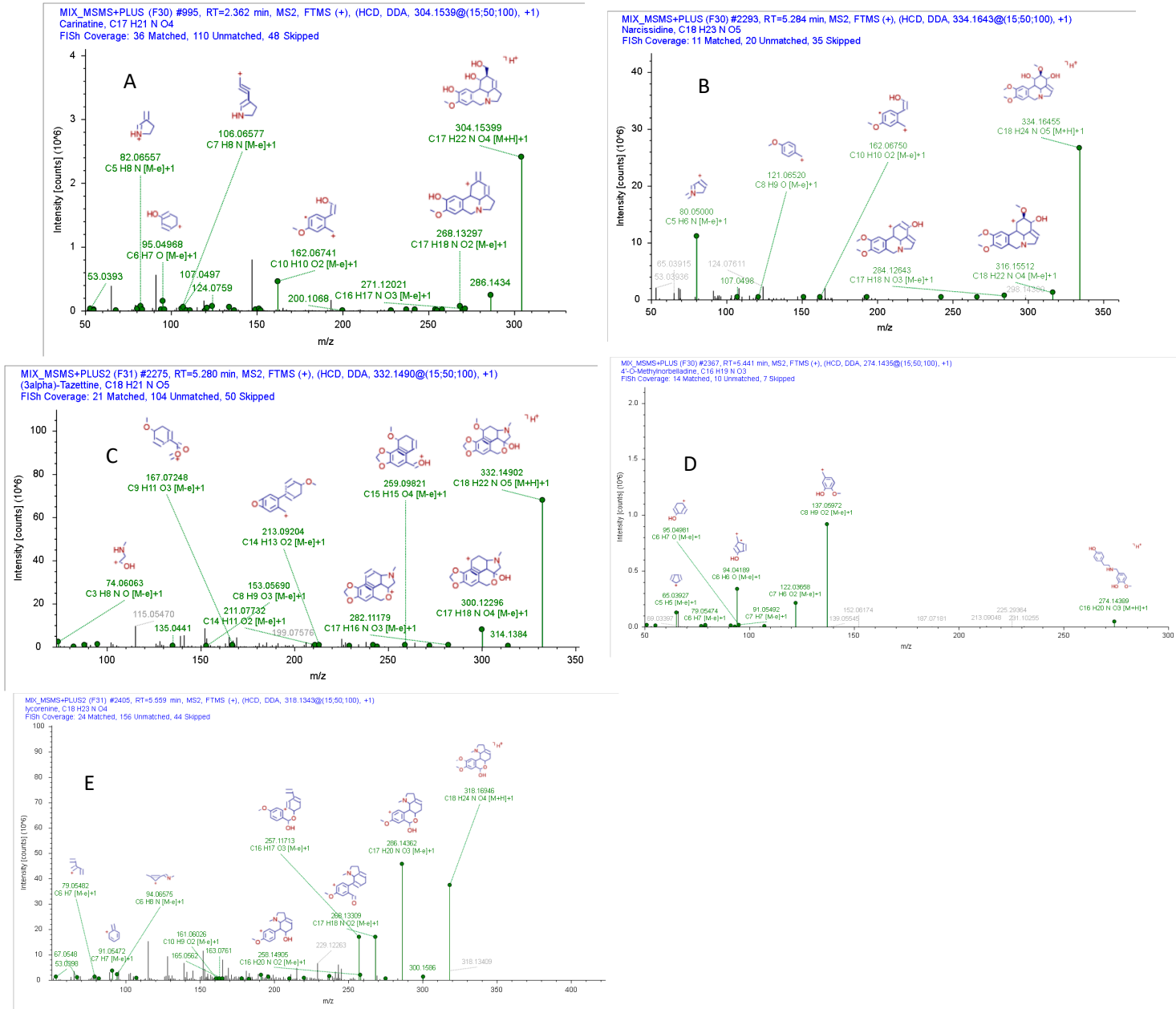


Figure S3: MS/MS spectra and FISH scoring coverage for the annotated alkaloids Carinatine (A), Narcissidine (B), Tazettine (C), 4'-O-methylnorbelleadine (D) and Lycorinine (E).

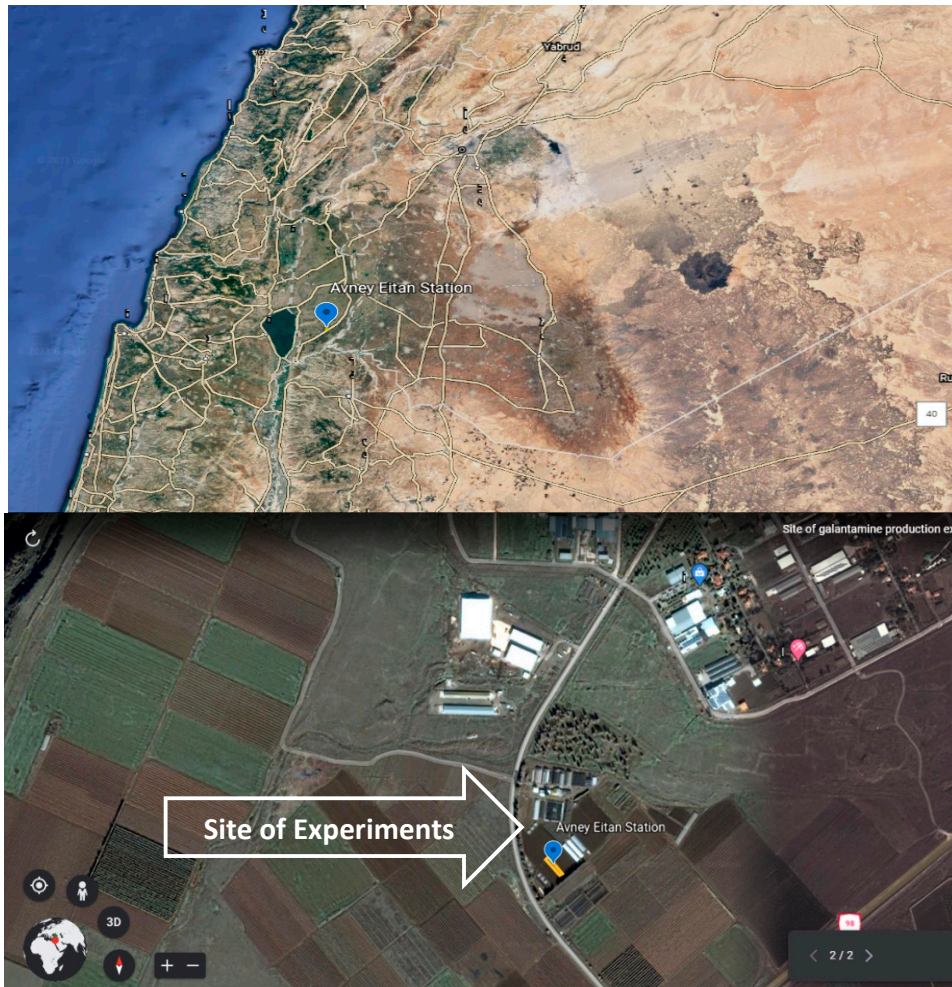


Figure S4: Map of the *Narcissus (Amaryllidaceae)* cultivars planted site (In the local soil of the Avney Eitan experimental station in the Golan Heights, Israel (375 Meters Above Sea Level, N35°45'45" E32°02'49"). The maps were taken from Google earth.