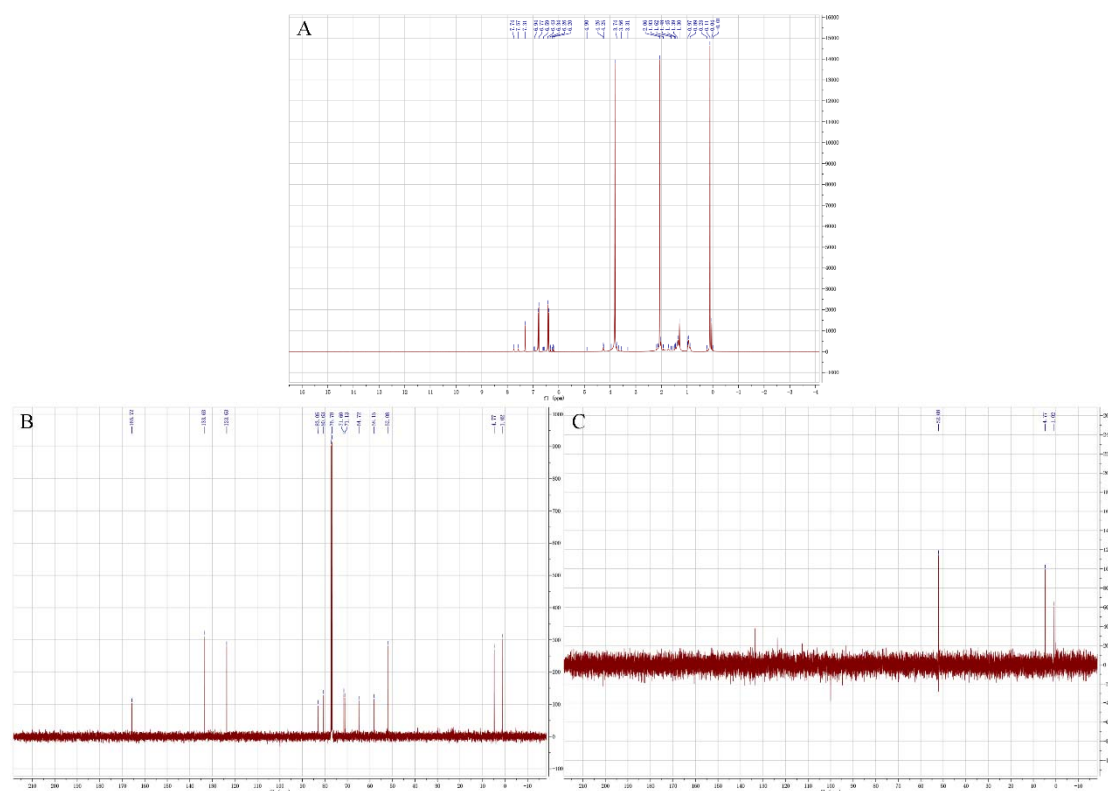


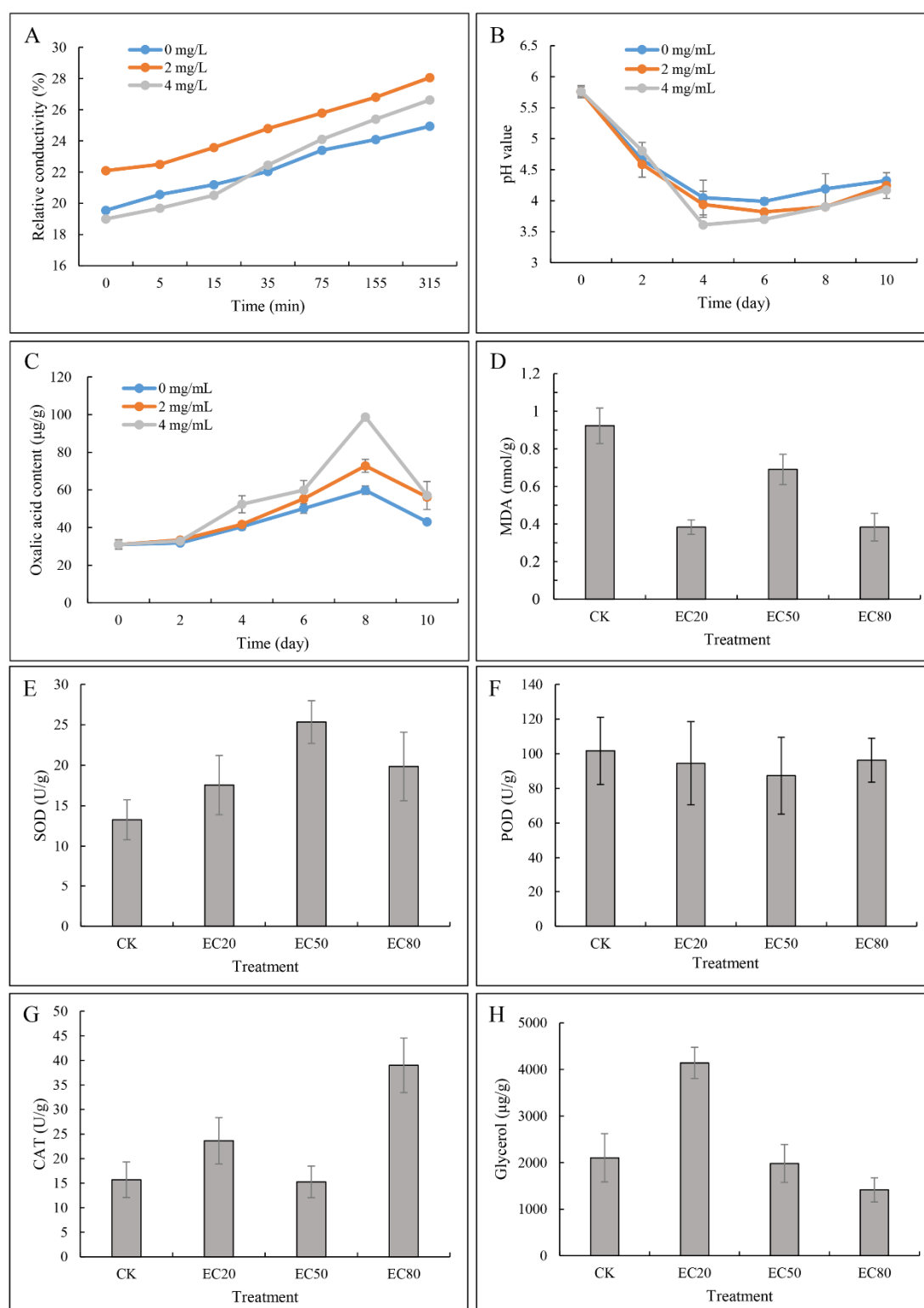
Supplemented materials:

**Table S1.** The minimum inhibitory concentration of TDDE against different bacteria.

Strain name	Minimum Inhibitory Concentration (MIC, μg/mL)
<i>P.syringae</i> pv. <i>actinidiae</i>	34.593
<i>E. carotovora</i>	59.184
<i>B. cereus</i>	68.495
<i>X. campestris</i> pv. <i>jugiandis</i>	73.074
<i>E. carotovora</i> subsp. <i>carotovora</i>	62.165



**Figure S1.** The H-NMR and C-NMR of TDDE. **A.** H-NMR; **B.** C-NMR; **C.** DEPT. NMR, nuclear magnetic resonance; DEPT, distortionless enhancement by polarization transfer.



**Figure S2.** Effects of TDDE on *B. cinerea* physiological activities. **A.** Relative conductivity; **B.** pH value; **C.** Oxalic acid content; **D.** Malondialdehyde (MDA) content; **E.** Superoxide dismutase (SOD) activity; **F.** Peroxidase (POD) activity; **G.** Catalase (CAT) activity; **H.** Glycerol content. CK, blank control; EC20-80, different concentration of TDDE.