

# Supplementary Material

Article

## HPLC-(Q)-TOF-MS based study of plasma metabolic profiles differences associated with age in paediatric population using animal model

Oihane E. Albóniga<sup>1,2\*</sup>, Oskar González-Mendia<sup>3</sup>, María E. Blanco<sup>1</sup>, Rosa M. Alonso<sup>1</sup>

<sup>1</sup>Department of Analytical Chemistry, Faculty of Science and Technology, University of the Basque Country (UPV/EHU), Barrio Sarriena s/n, 48940 Leioa, Spain

<sup>2</sup> Metabolomics Platform, CIC bioGUNE, CIBERehd, Bizkaia Technology Park, 48160, Bilbao, Spain.

<sup>3</sup>Painting Department, Faculty of Fine Arts, University of the Basque Country (UPV/EHU), Barrio Sarriena s/n, 48940 Leioa, Spain

\*Correspondence: oihaneelena.alboniga@ehu.eus

### Contents:

**Figure S1.** PCA scores plot obtained after scaling the matrices by autoscaling for Plasma ESI+ and logarithm for Plasma ESI-, and PCA scores plot after QC correction. Piglet groups: newborns (A), infants (B), and children (C). TEV = total explained variance.

**Figure S2.** Plasma ESI+ validation results. **a.** Average confusion matrix in percentage and **b.** Correct classification rate (CCR) graph where blue bars are the real sample classification and the red bars the permuted or randomly assigned classification.

**Figure S3.** Plasma ESI- validation results. **a.** Average confusion matrix in percentage and **b.** Correct classification rate (CCR) graph where blue bars are the real sample classification and the red bars the permuted or randomly assigned classification.

**Table S1.** Pairs of correlated features obtained by Pearson correlation studies that were considered for MS/MS studies.

**Figure S4.** Experimental fragmentation pattern of the significant feature in positive ionization mode with  $m/z = 548.3703$  and  $RT = 11.52$  min, which has a phosphocholine in its structure.

**Figure S5.** Experimental fragmentation pattern of the significant feature in positive ionization mode with  $m/z = 300.6346$  and  $RT = 10.55$  min, which has a phosphocholine in its structure.

**Figure S6.** Fragmentation pattern of the significant feature with  $m/z = 356.2794$  and  $RT = 9.7$  annotated as acylcarnitine class.

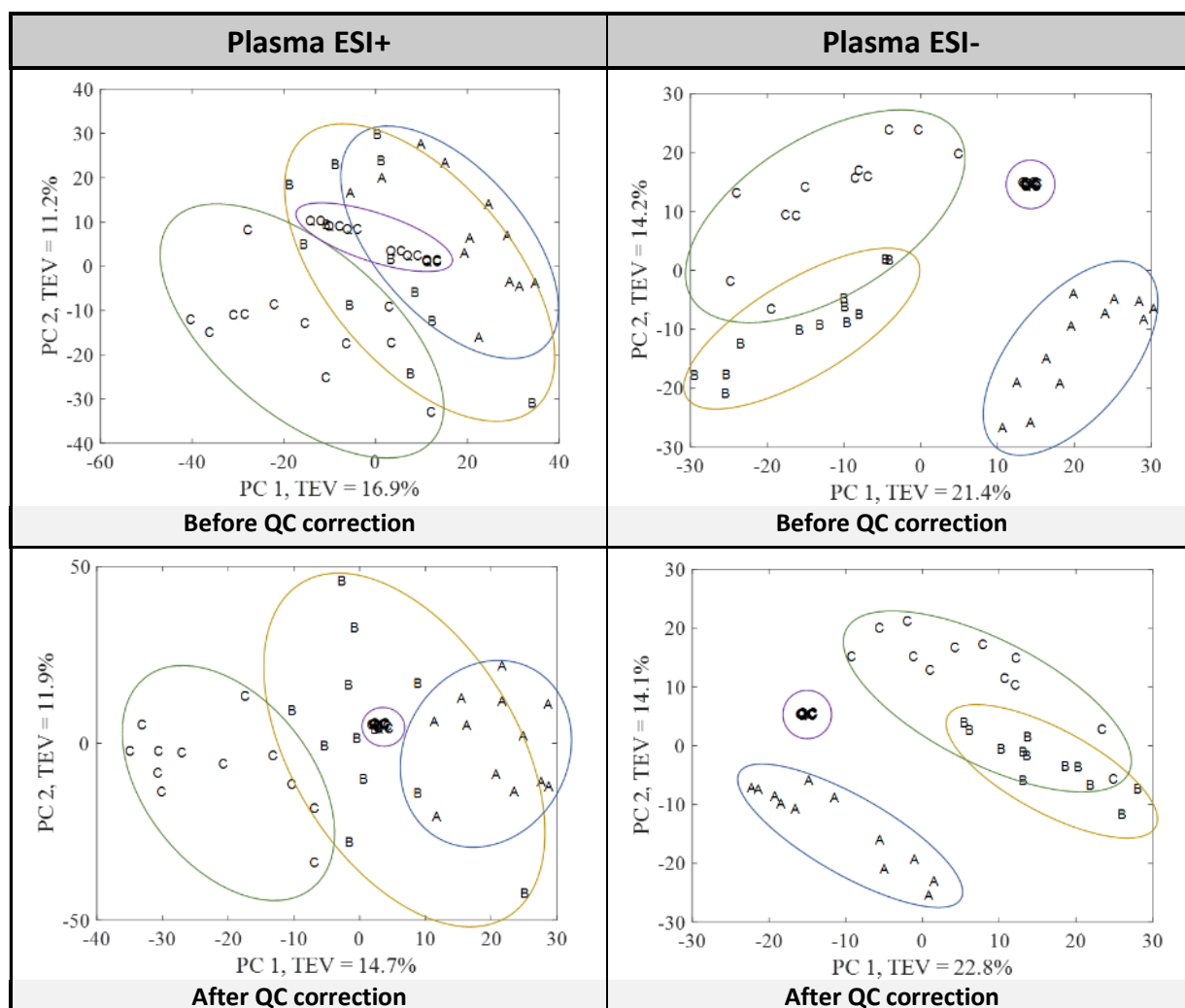
**Figure S7.** MS/MS spectra and fragmentation pattern in negative ionization mode for the LPC (20:5) with  $m/z = 586.3141$  and  $RT = 10.03$  min.

**Figure S8.** MS/MS spectra and fragmentation pattern in negative ionization mode for the LPC class metabolite with  $m/z = 615.3475$  and  $RT = 10.69$  min.

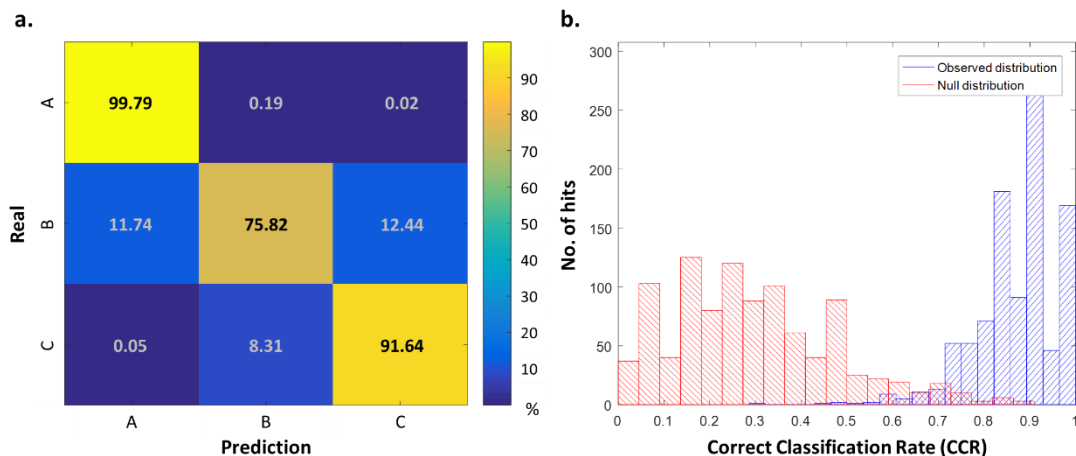
**Figure S9.** MS/MS spectra and fragmentation pattern for the LPE (18:1) with  $m/z = 478.2922$  and  $RT = 10.89$  min.

**Figure S10.** MS/MS spectra and fragmentation pattern in negative ionization mode for the LPE (15:1) with  $m/z = 436.2815$  and  $RT = 10.98$  min.

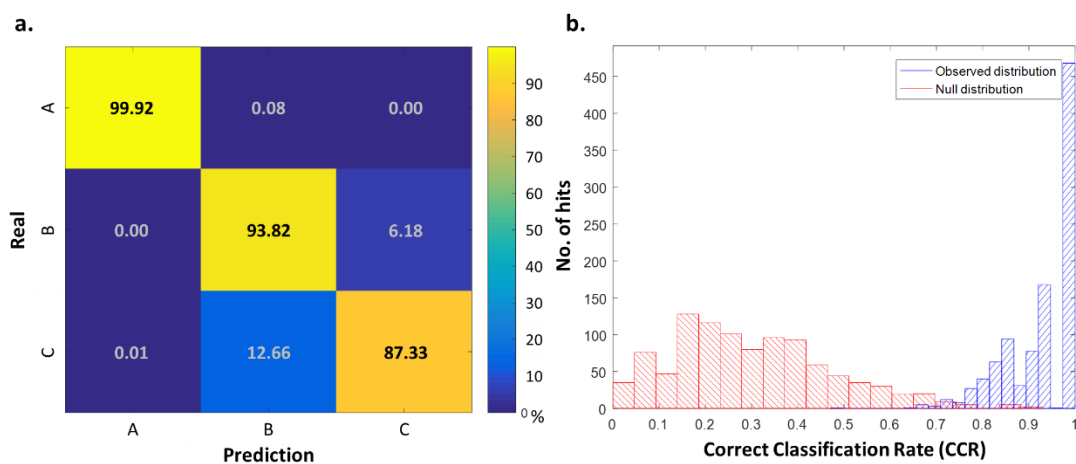
**Figure S11.** Tendency among groups of the significant metabolites (A) LCP (20:4) obtained in positive ionization mode and (B) LPC (20:5) in negative ionization mode.



**Figure S1.** PCA scores plot obtained after scaling the matrices by autoscaling for Plasma ESI+ and logarithm for Plasma ESI-, and PCA scores plot after QC correction. Piglet groups: newborns (A), infants (B), and children (C). TEV = total explained variance.



**Figure S2.** Plasma ESI+ validation results. **a.** Average confusion matrix in percentage and **b.** Correct classification rate (CCR) graph where blue bars are the real sample classification and the red bars the permuted or randomly assigned classification.

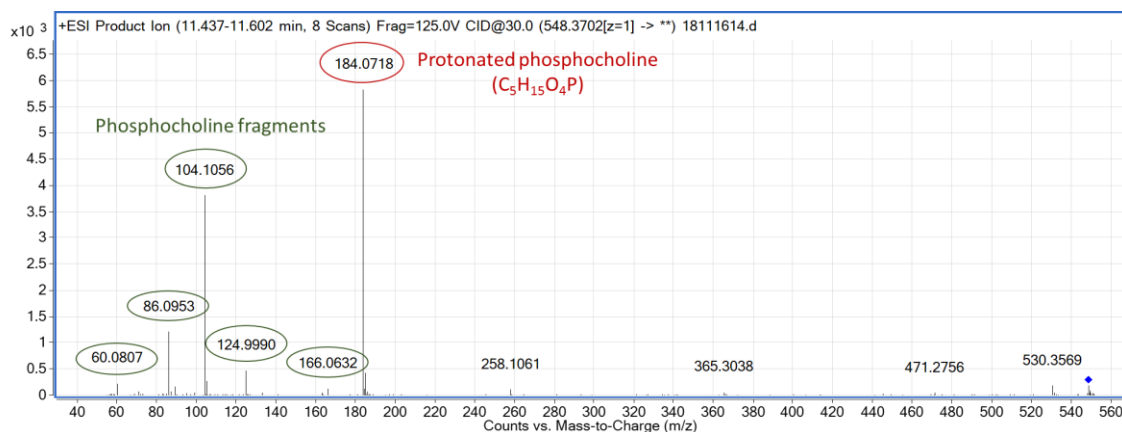


**Figure S3.** Plasma ESI- validation results. **a.** Average confusion matrix in percentage and **b.** Correct classification rate (CCR) graph where blue bars are the real sample classification and the red bars the permuted or randomly assigned classification.

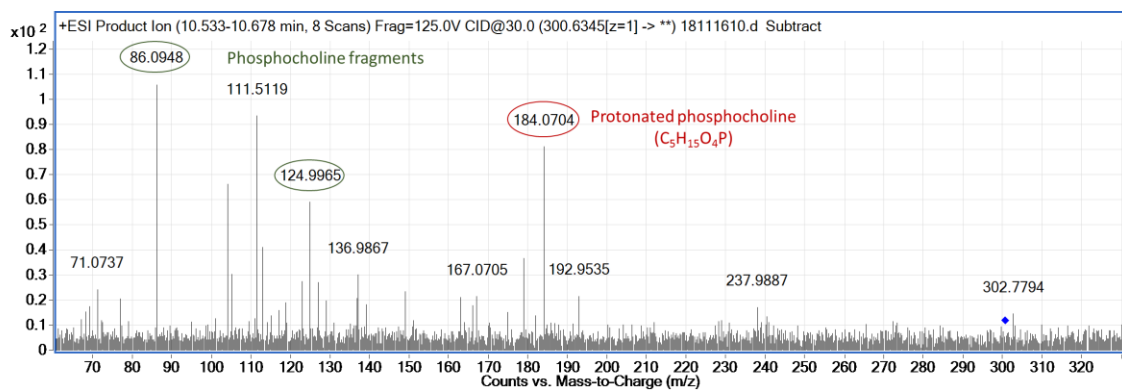
**Table S1.** Pairs of correlated features obtained by Pearson correlation studies that were considered for MS/MS studies.

<i>m/z</i>	RT (min)	Putative Ion Specie	Ionization Mode	<i>m/z</i>	RT (min)	Putative Ion Specie	Ionization Mode
400.1157*	6.57	[M+H] <sup>+</sup>	ESI+	398.0972*	6.52	[M-H] <sup>-</sup>	ESI-
271.9848*	6.84		ESI+	343.0242*	6.78		ESI-
				457.0161*	6.79		ESI-
364.0715*	6.98		ESI+	351.0658	6.96		ESI-
530.3254*	11.04	[M+H] <sup>+</sup>	ESI+	528.3077	11.01	[M-H] <sup>-</sup>	ESI-
237.0881	6.10	[M+H] <sup>+</sup>	ESI+	235.0707*	5.95	[M-H] <sup>-</sup>	ESI-
309.0737	6.41		ESI+	315.1055*	6.37		ESI-
146.0599	6.70		ESI+	230.0111*	6.66		ESI-
430.1264	7.85	[M+H] <sup>+</sup>	ESI+	428.1105*	7.83	[M-H] <sup>-</sup>	ESI-
243.6238	9.17		ESI+	815.5669*	9.11	[M-H] <sup>-</sup>	ESI-
244.6377	9.11		ESI+				
355.2625	9.11		ESI+				
373.2735	9.10		ESI+				
391.2836	9.11		ESI+				
493.2501	9.10		ESI+				
839.5638	9.11	[M+Na] <sup>+</sup>	ESI+				

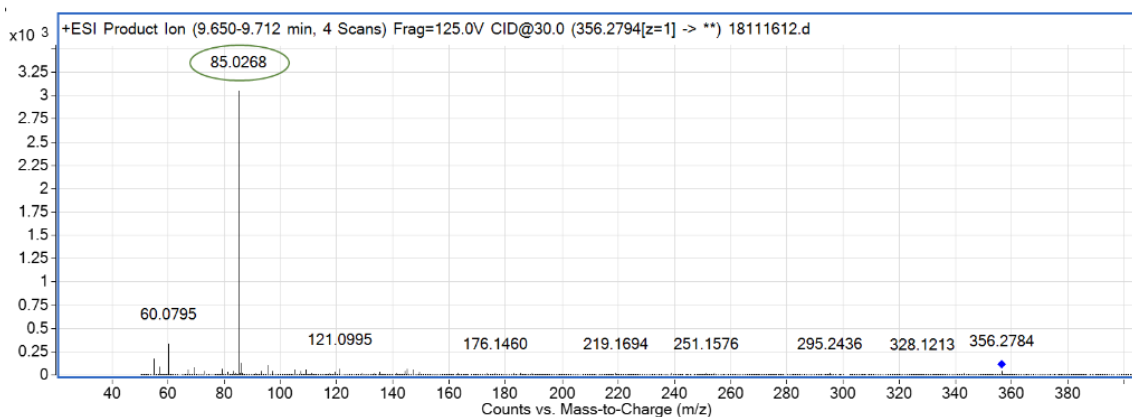
\* Significant features that differentiate the three groups ( $A \neq B \neq C$ )



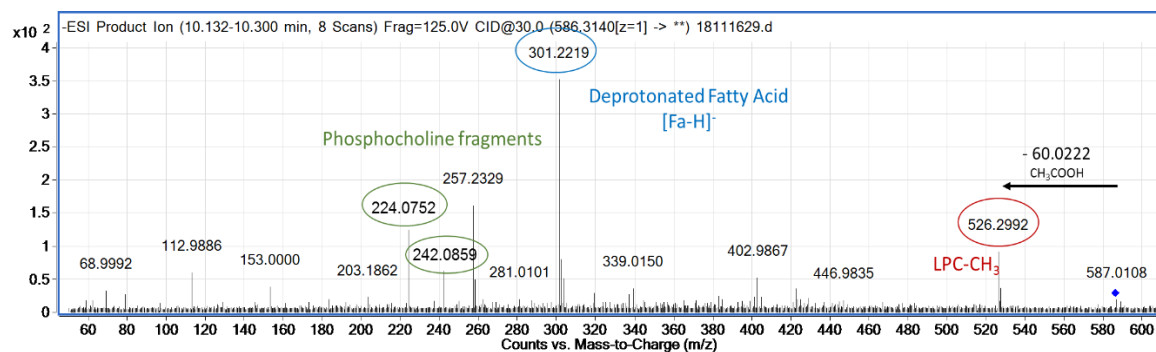
**Figure S4.** Experimental fragmentation pattern of the significant feature in positive ionization mode with  $m/z = 548.3703$  and  $RT = 11.52$  min, which has a phosphocholine in its structure.



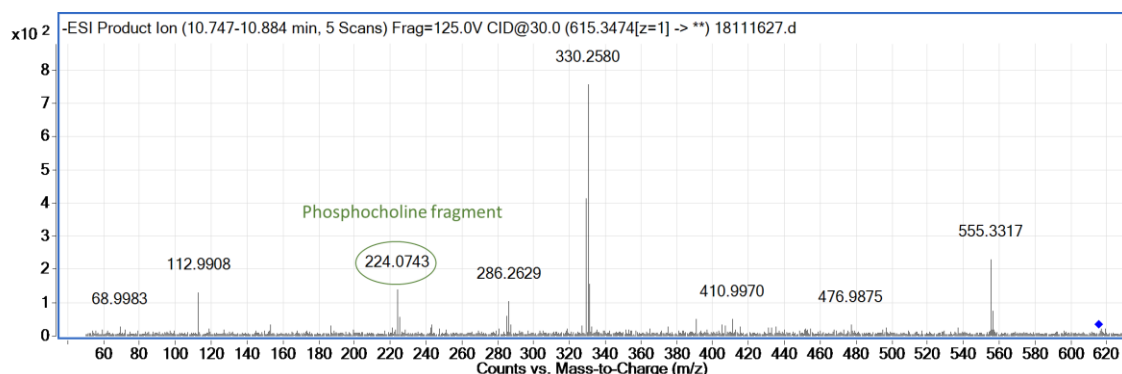
**Figure S5.** Experimental fragmentation pattern of the significant feature in positive ionization mode with  $m/z = 300.6346$  and  $RT = 10.55$  min, which has a phosphocholine in its structure.



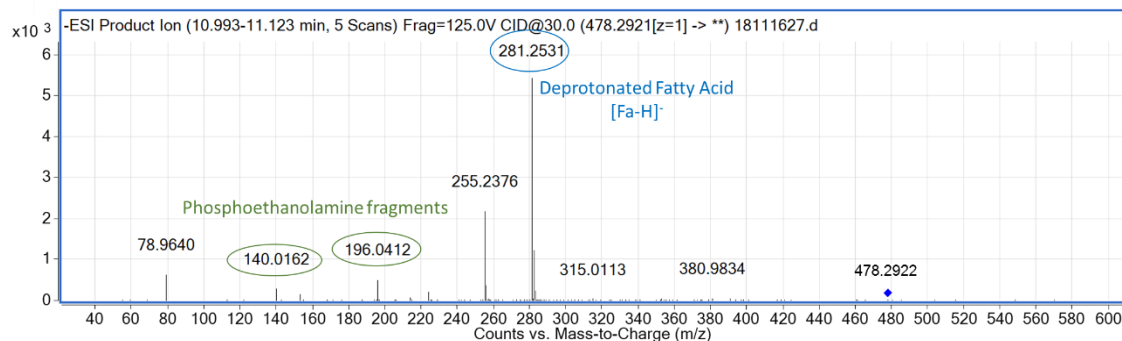
**Figure S6.** Fragmentation pattern of the significant feature with  $m/z = 356.2794$  and  $RT = 9.7$  annotated as acylcarnitine class.



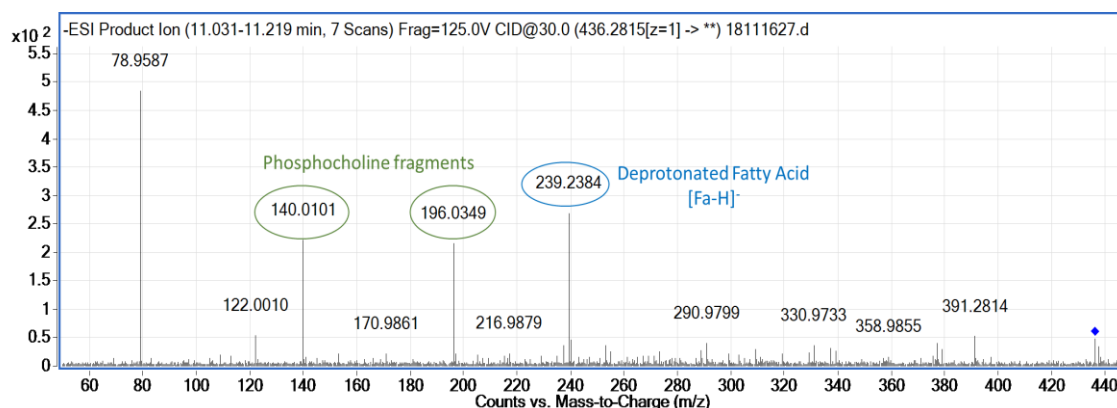
**Figure S7.** MS/MS spectra and fragmentation pattern in negative ionization mode for the LPC (20:5) with  $m/z = 586.3141$  and  $RT = 10.03$  min.



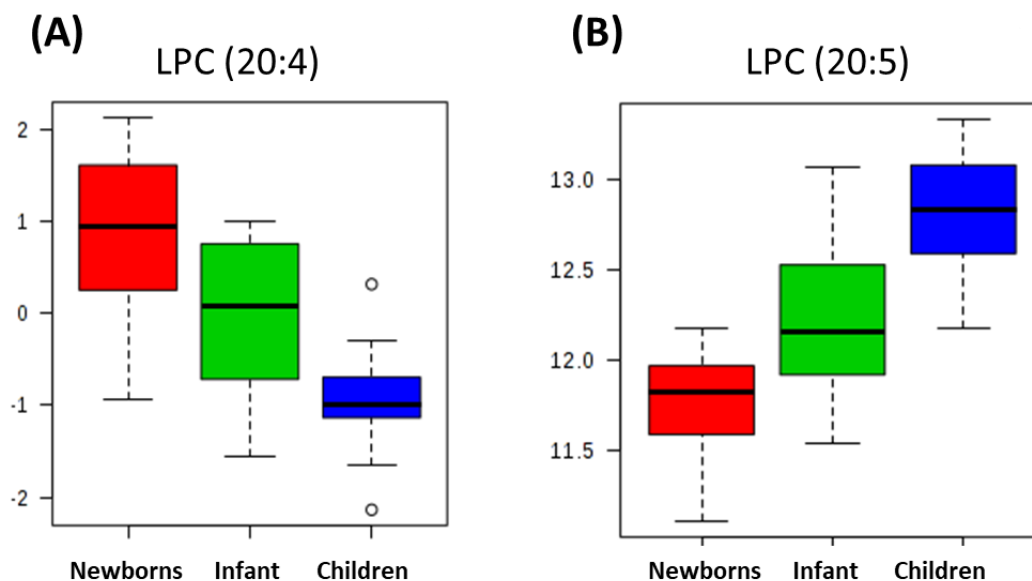
**Figure S8.** MS/MS spectra and fragmentation pattern in negative ionization mode for the LPC class metabolite with  $m/z = 615.3475$  and  $RT = 10.69$  min.



**Figure S9.** MS/MS spectra and fragmentation pattern for the LPE (18:1) with  $m/z = 478.2922$  and  $RT = 10.89$  min.



**Figure S10.** MS/MS spectra and fragmentation pattern in negative ionization mode for the LPE (15:1) with  $m/z$  = 436.2815 and RT = 10.98 min.



**Figure S11.** Tendency among groups of the significant metabolites (A) LCP (20:4) obtained in positive ionization mode and (B) LPC (20:5) in negative ionization mode.