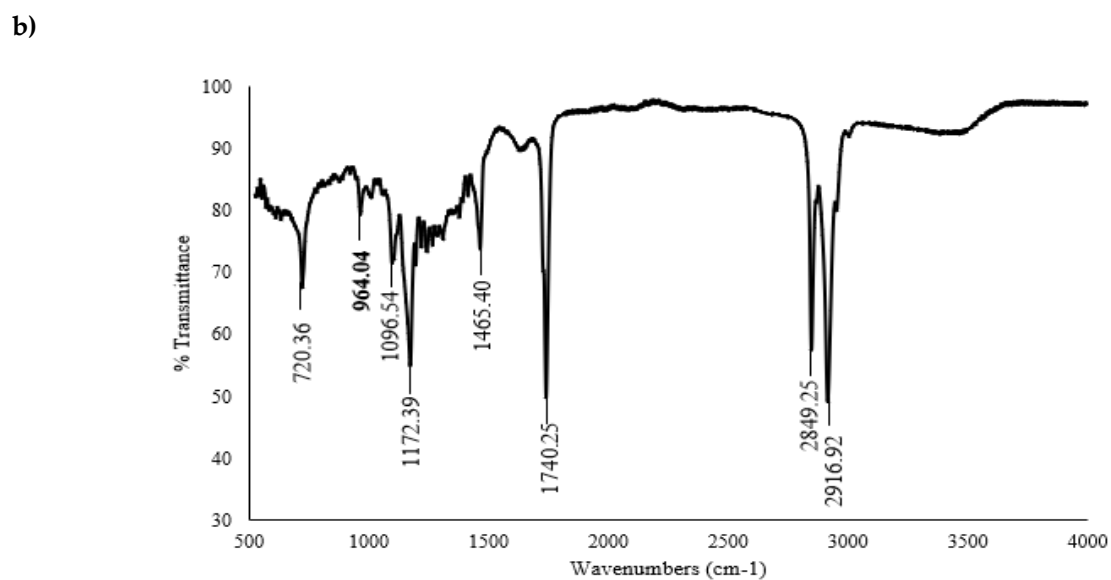
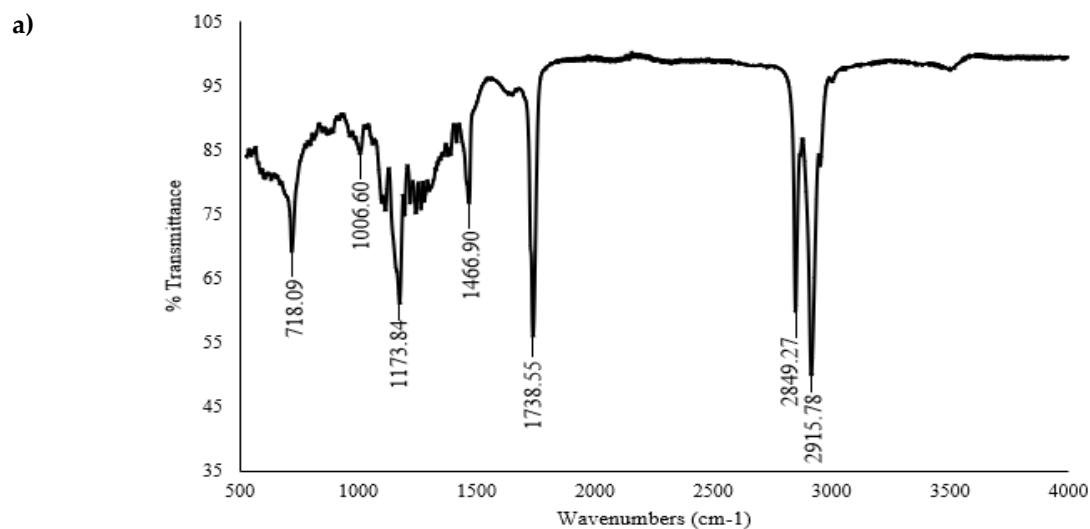
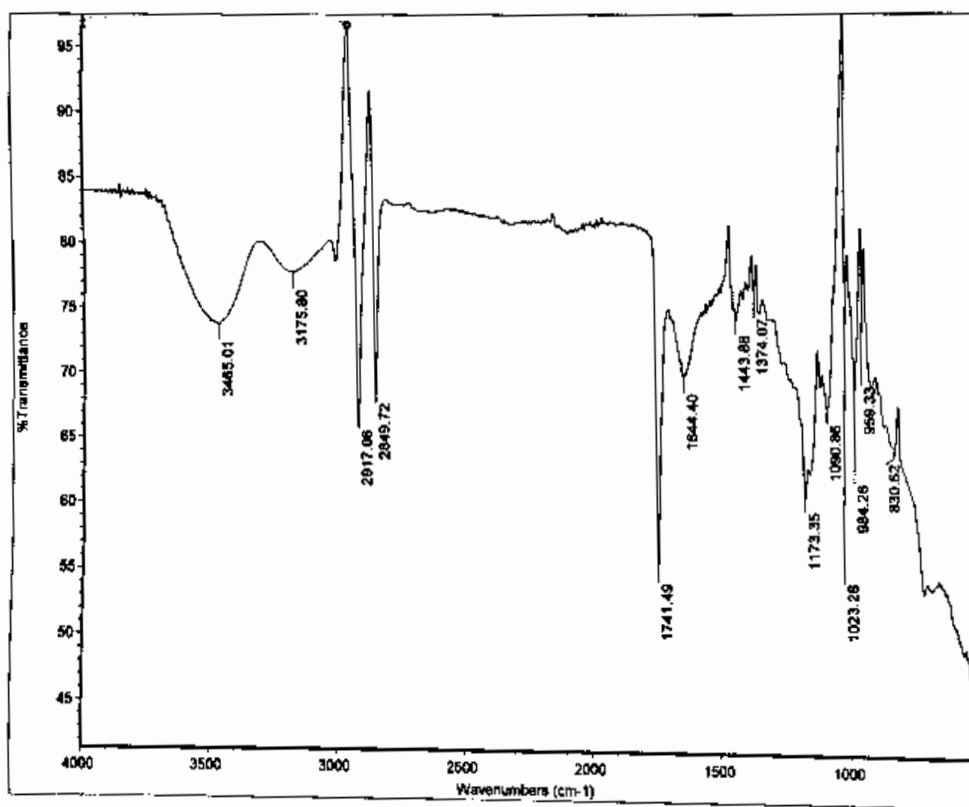


## Supplementary Data

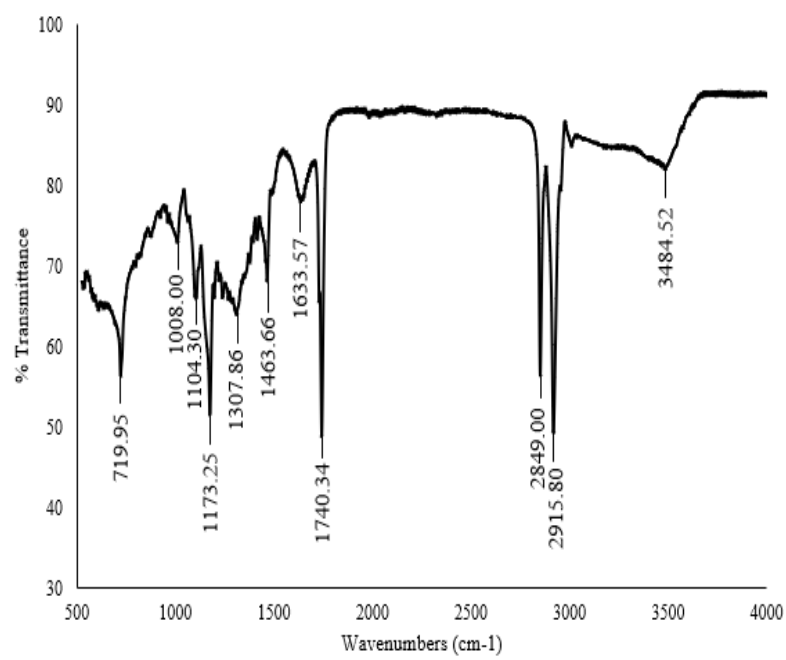
### Effects of a High Trans Fatty Acid Diet on Kidney-, Liver-, and Heart-Associated Diseases in a Rabbit Model



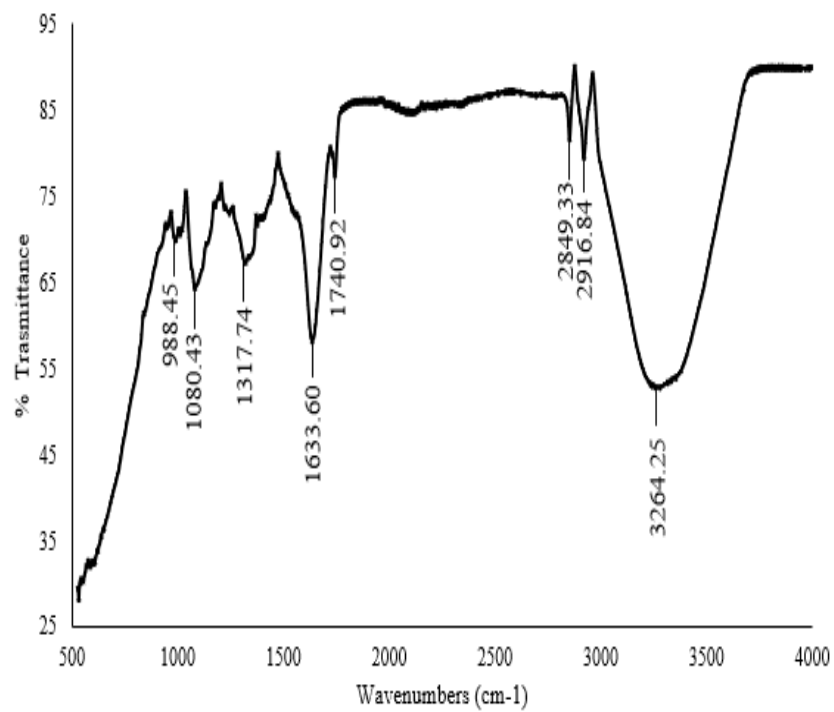
c)



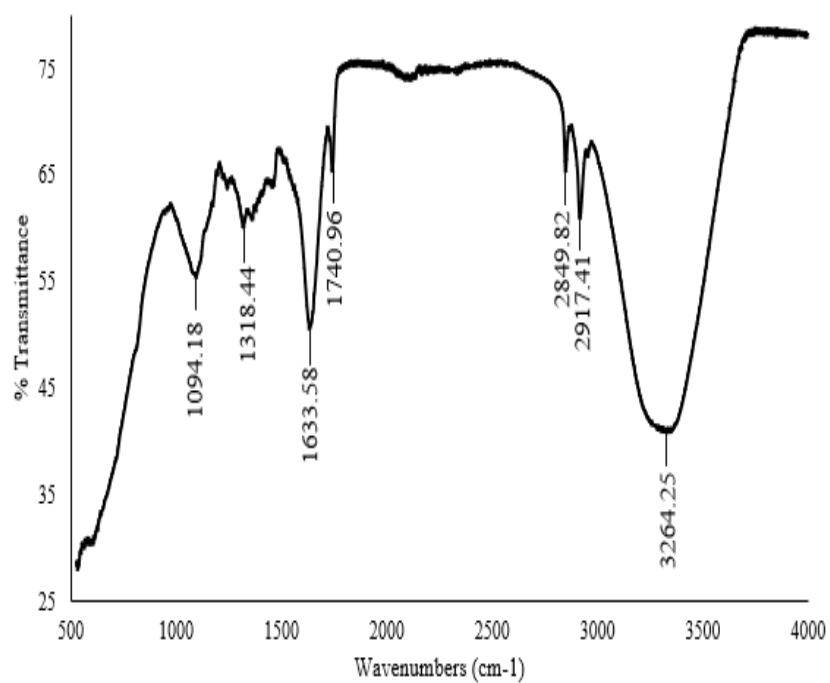
d)



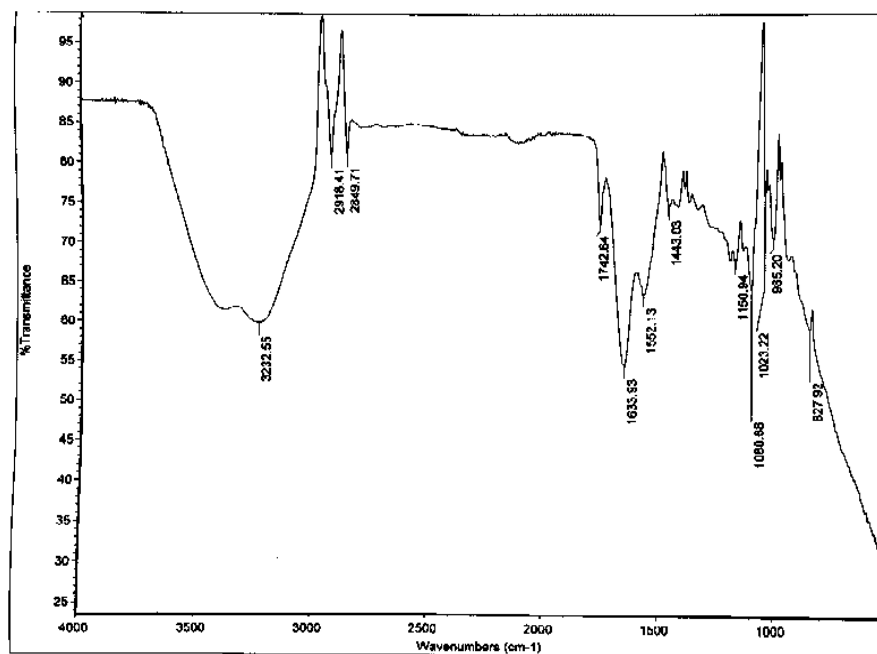
e)



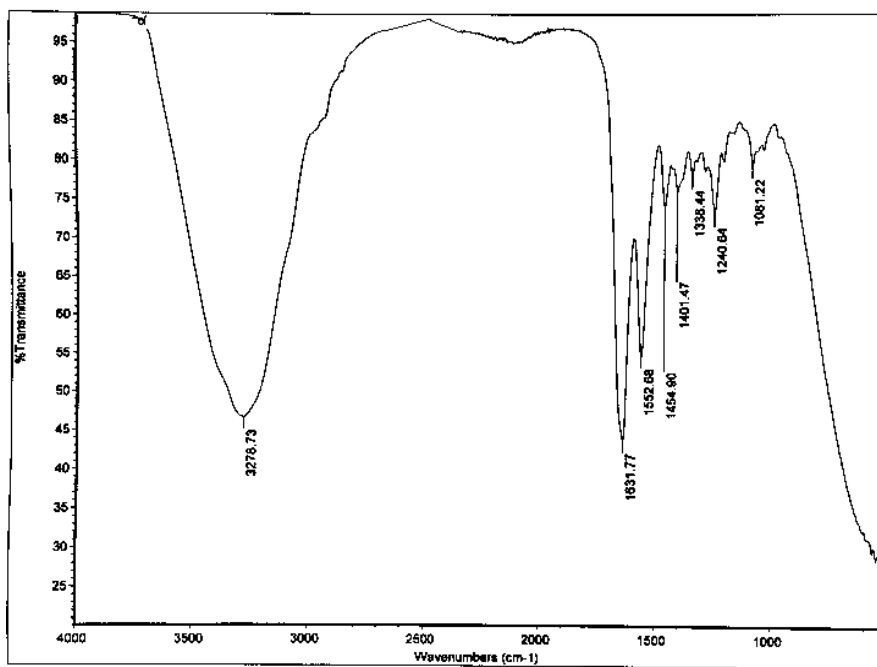
f)



g)

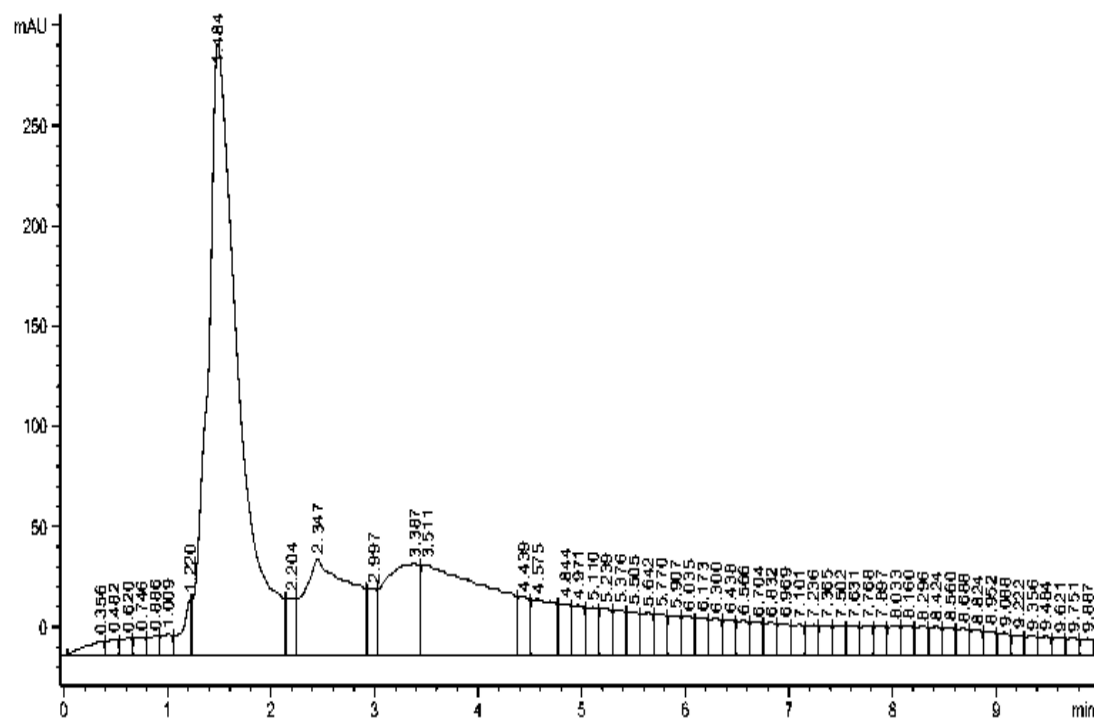


h)

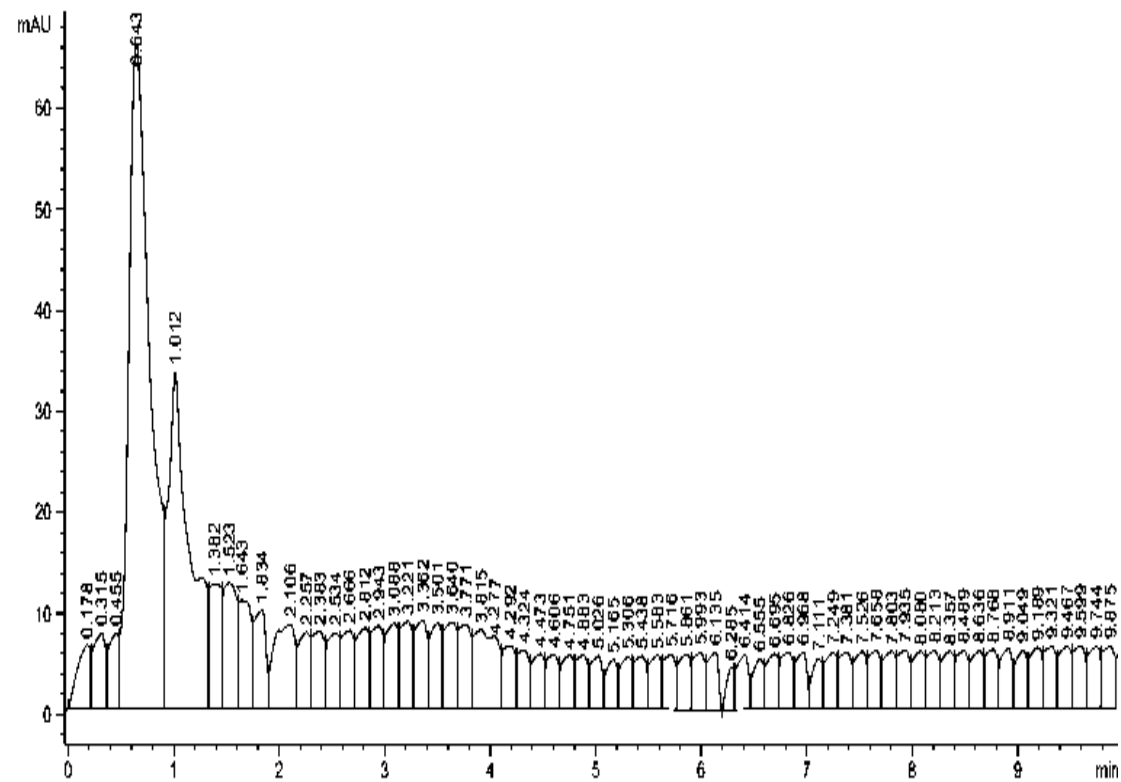


**Figure S1.** FT-IR Spectrums of food samples: (a) Kausar Ghee; (b) Mujahid Ghee; (c) Blue Band Margarine; (d) Belle Margarine; (e) Chibo UHT Dairy Cream; (f) Dubala Dairy Cream; (g) Cheese; (h) animal fat.

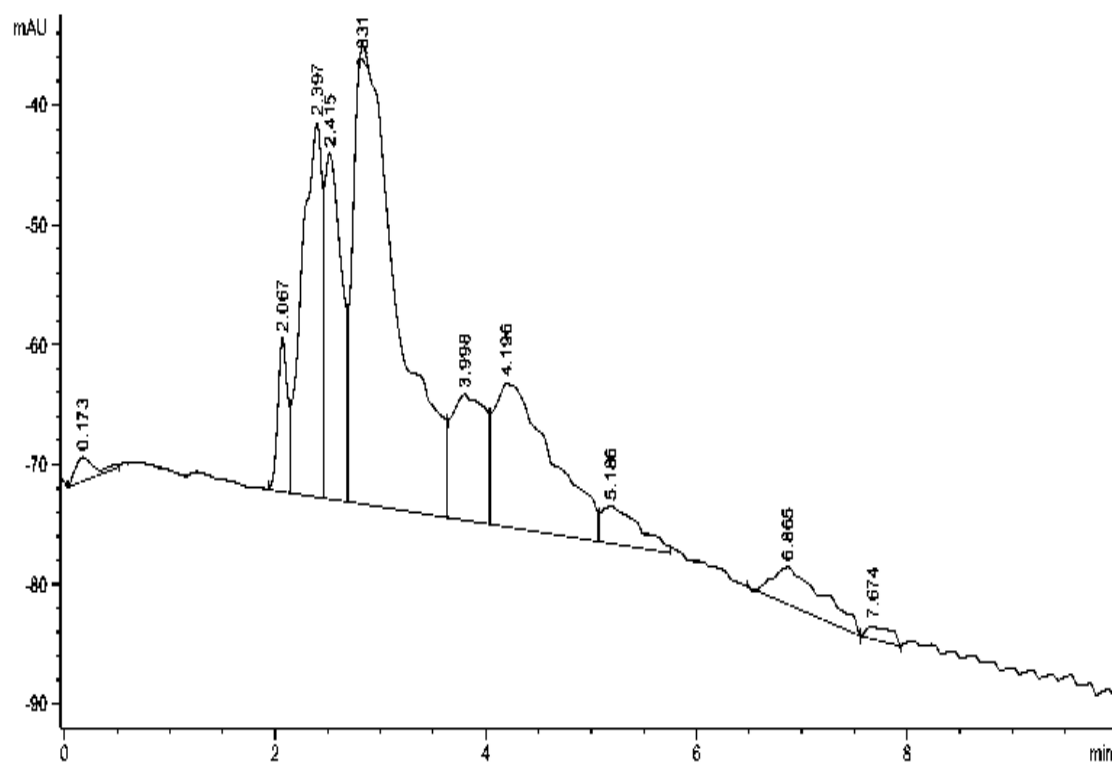
a)



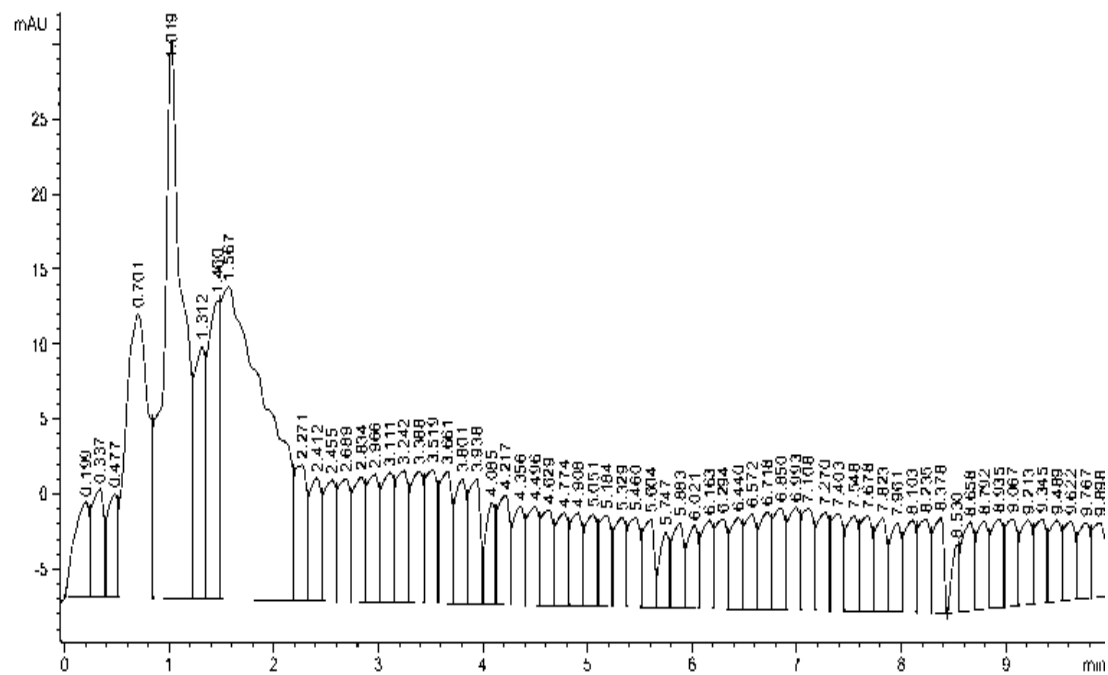
b)



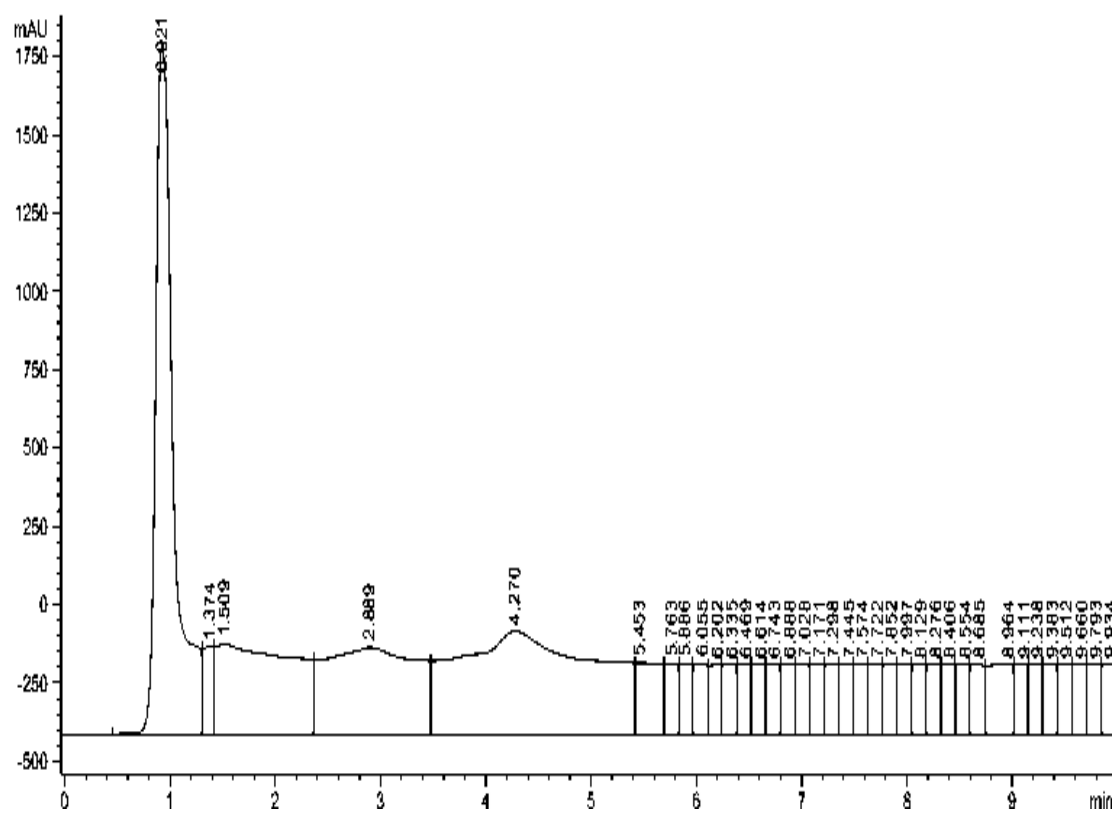
c)



d)

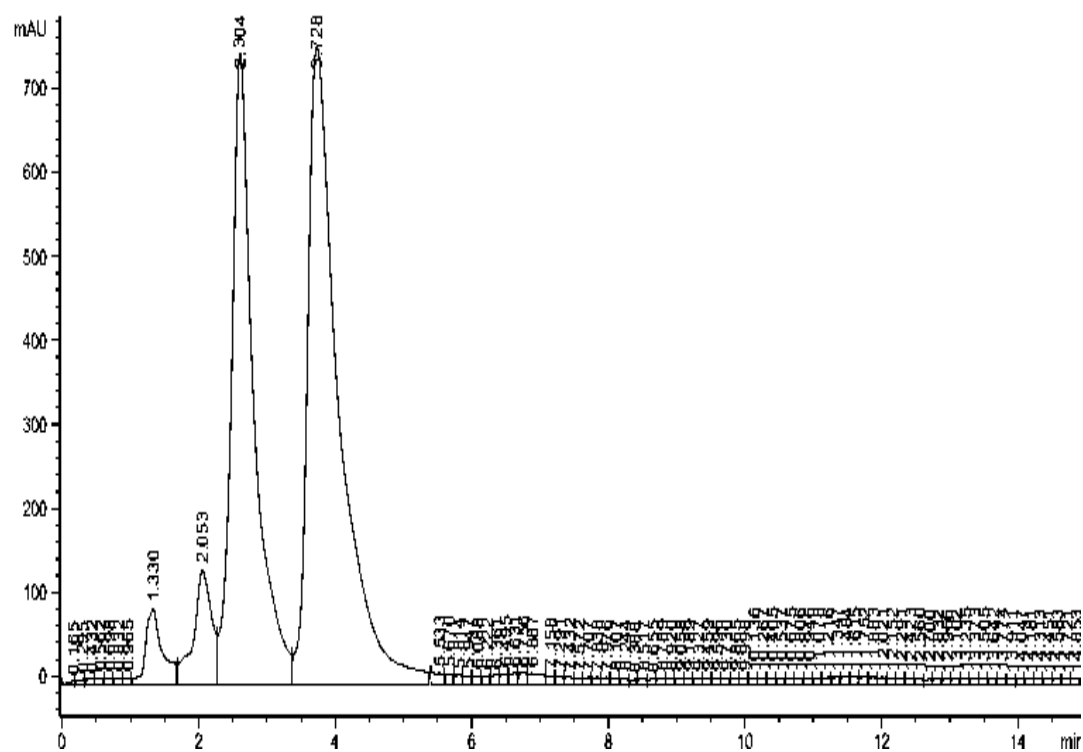


e)

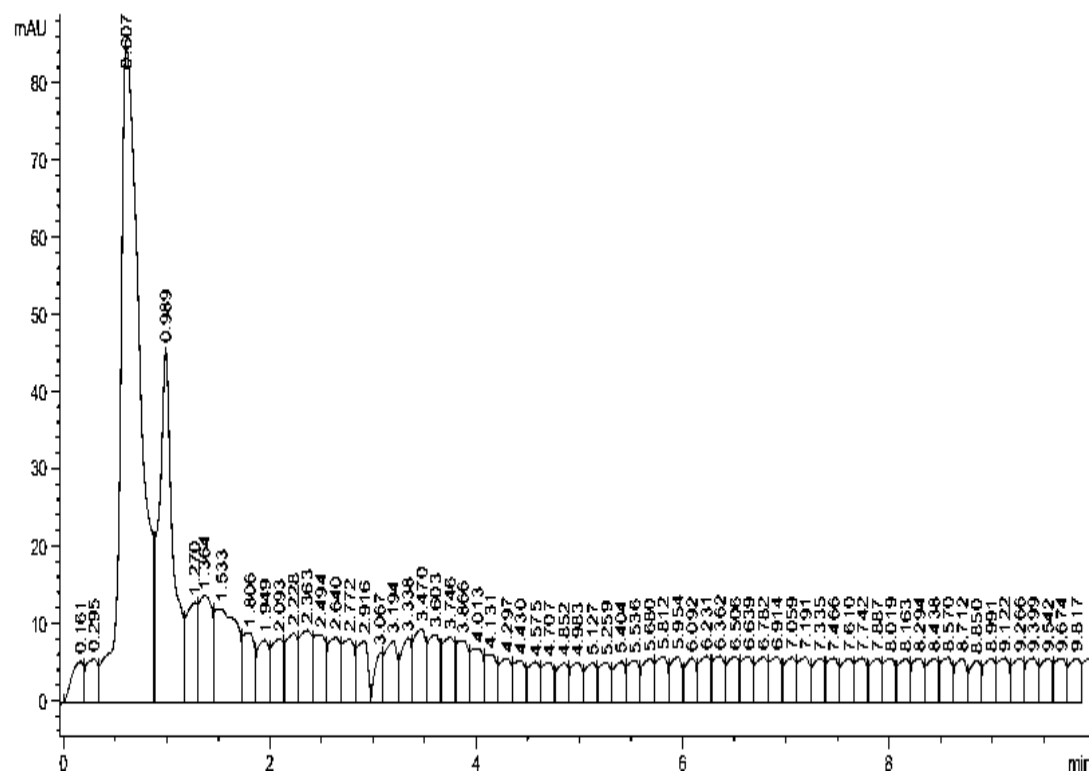


**Figure S2.** HPLC analysis of serum: (a) control group; (b) oleic acid group; (c) elaidic acid group; (d) Mujahid Ghee group; (e) Kausar Ghee group.

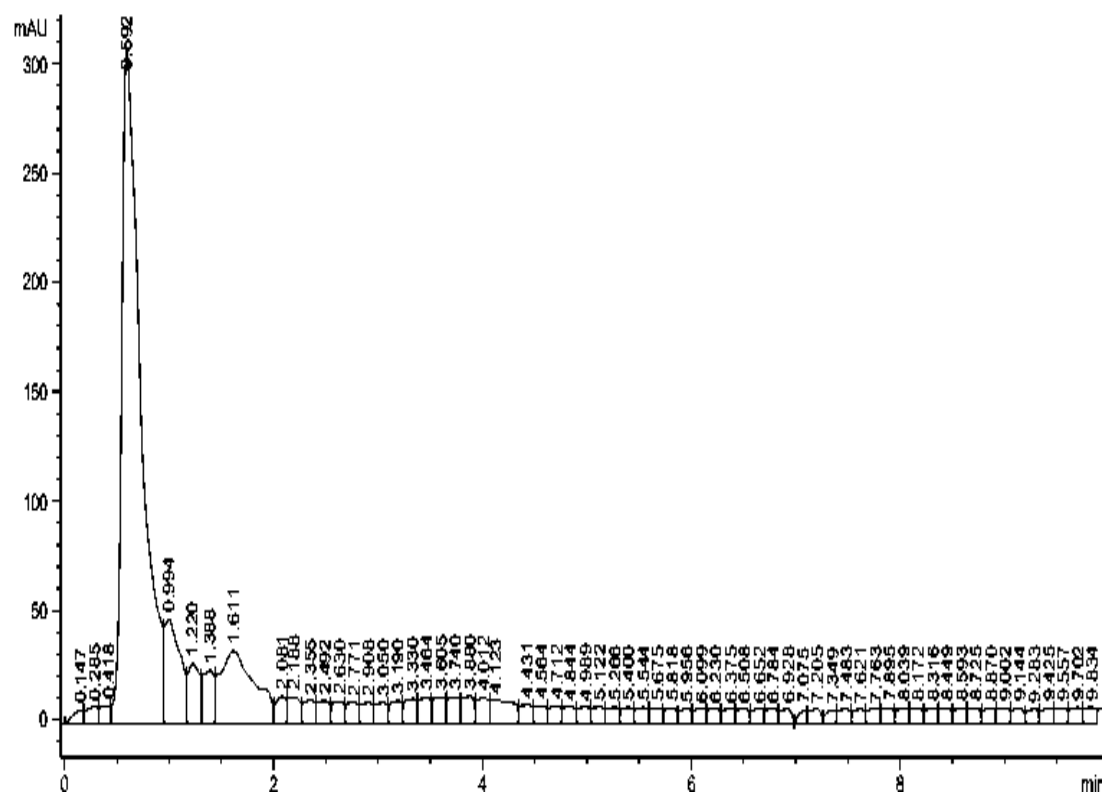
a)



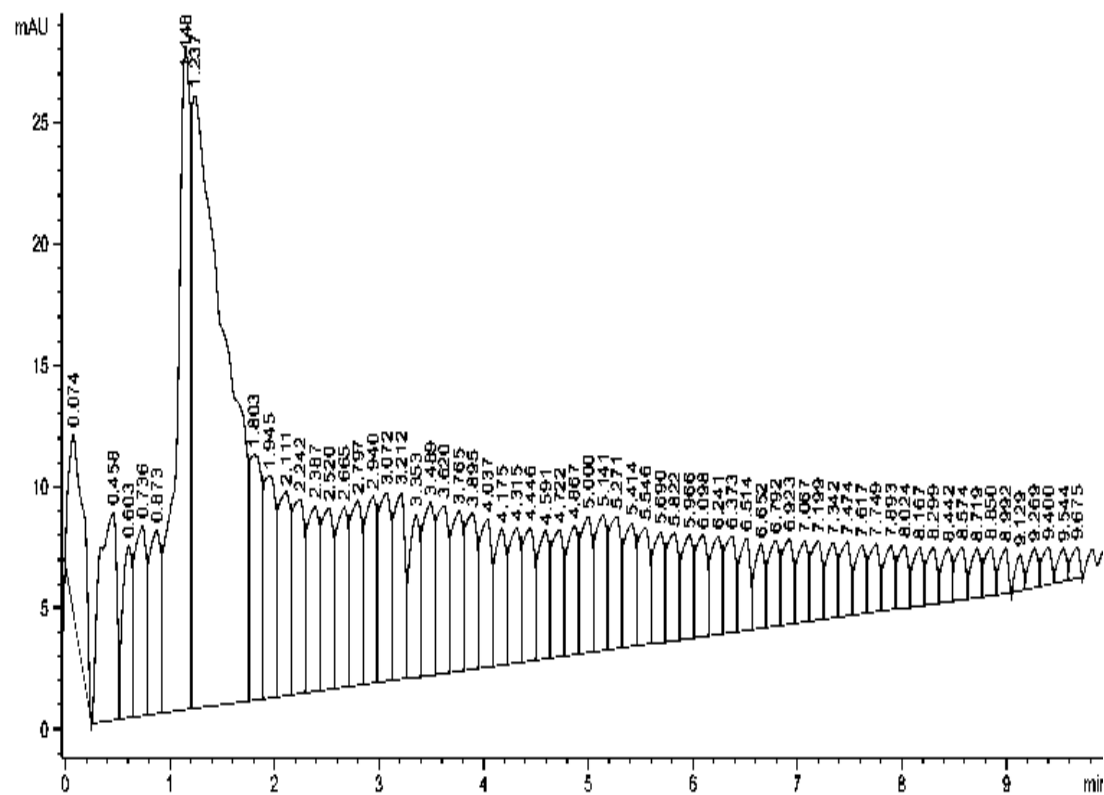
b)



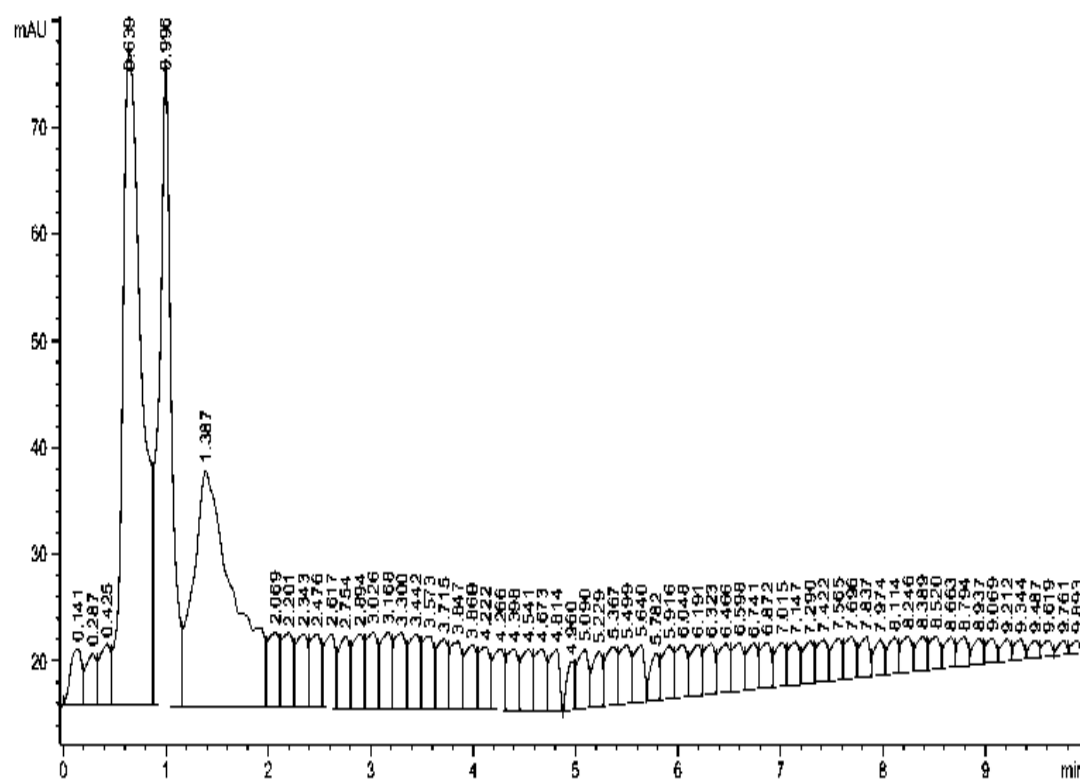
c)



d)

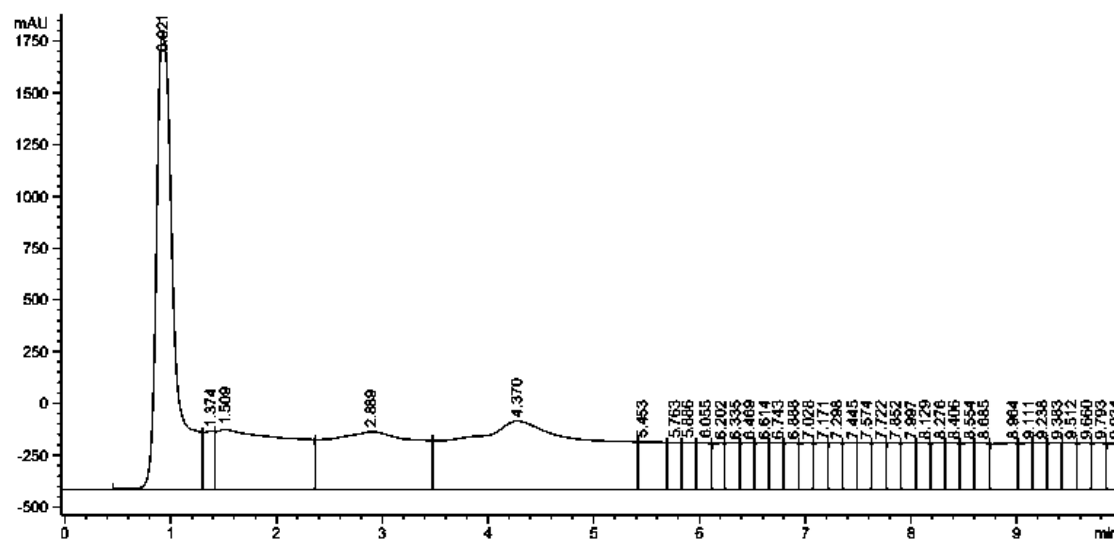


e)

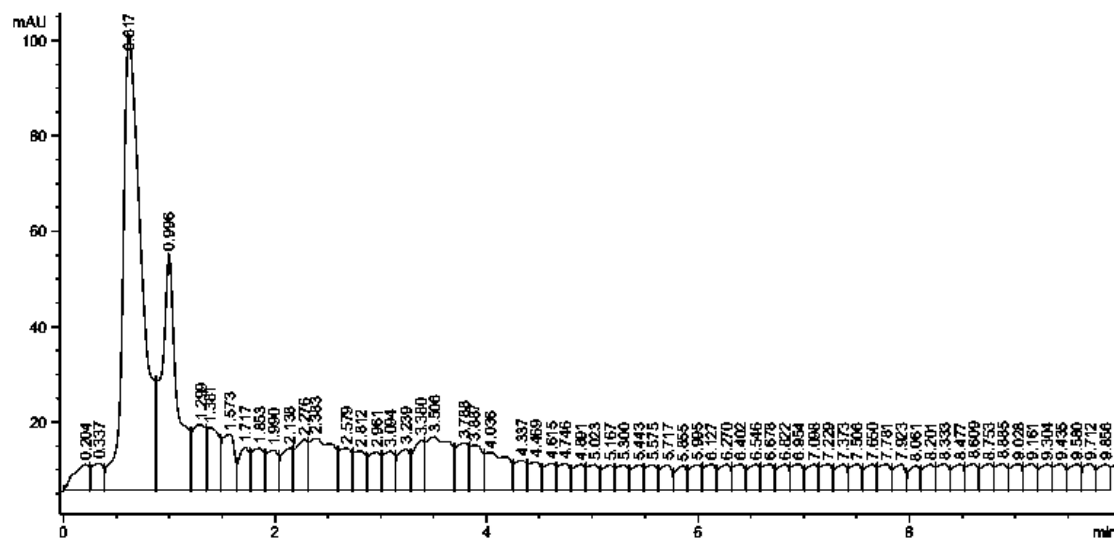


**Figure S3.** HPLC Results of heart tissue: (a) control group; (b) oleic acid group; (c) elaidic acid group; (d) Mujahid Ghee group; (e) Kausar Ghee group.

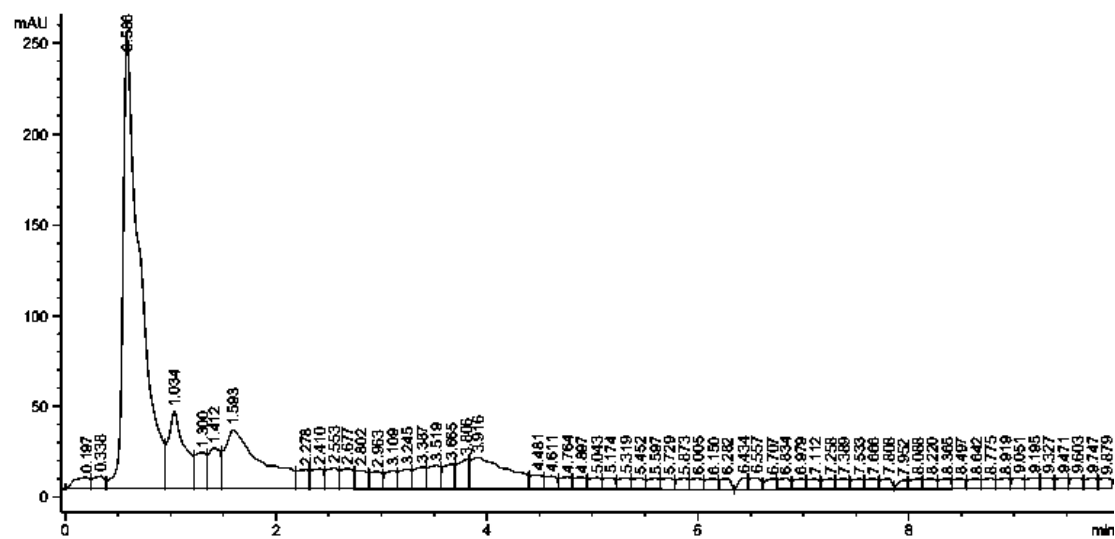
a)



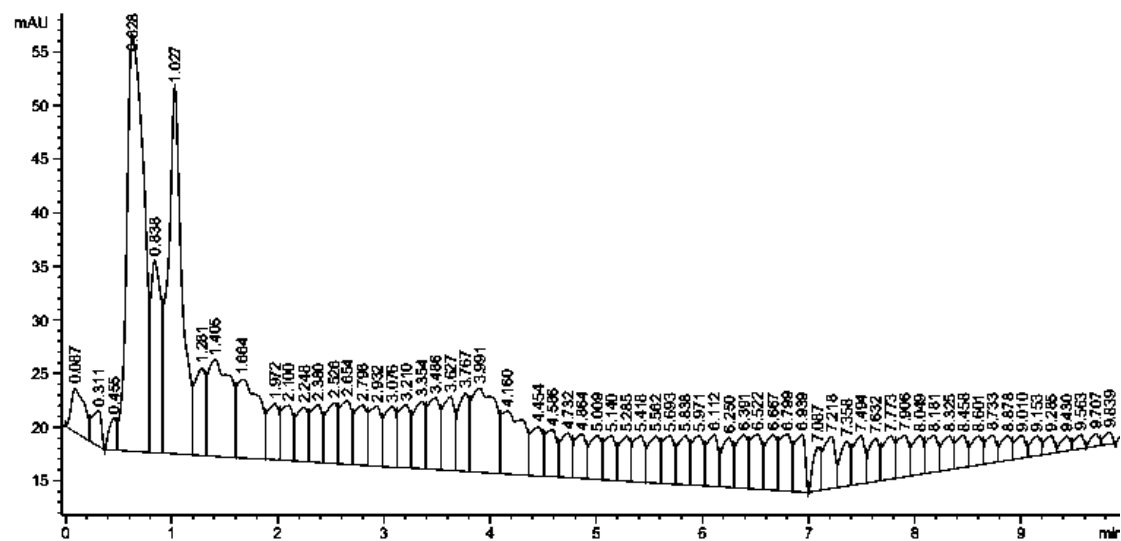
b)



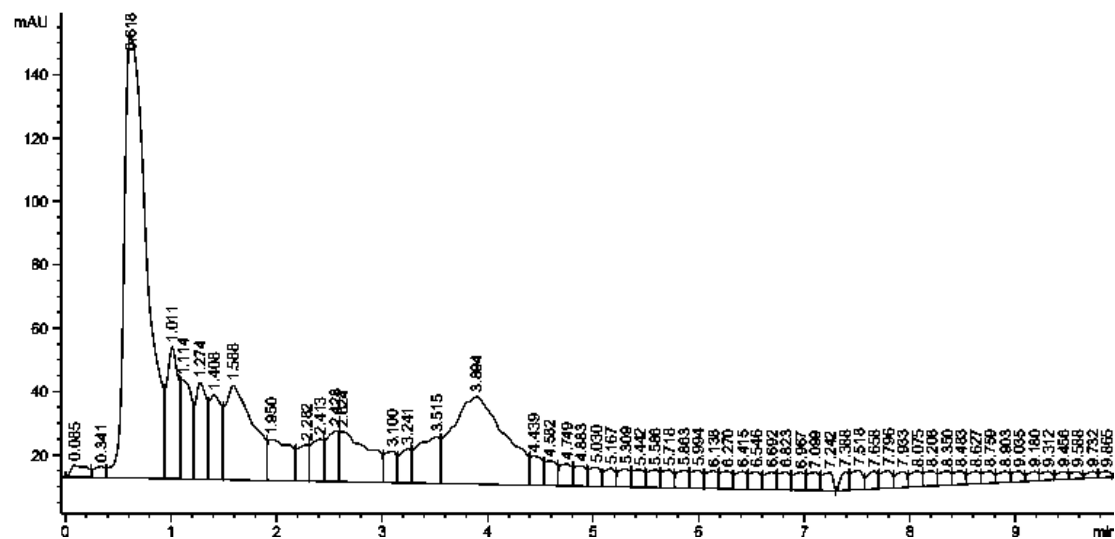
c)



d)

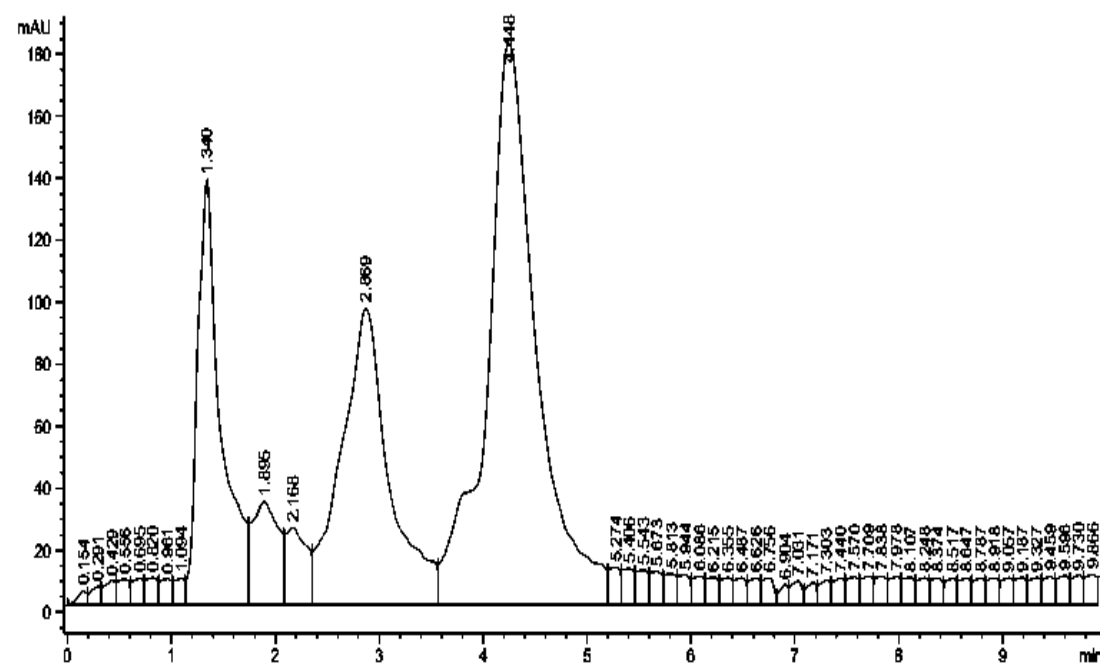


e)

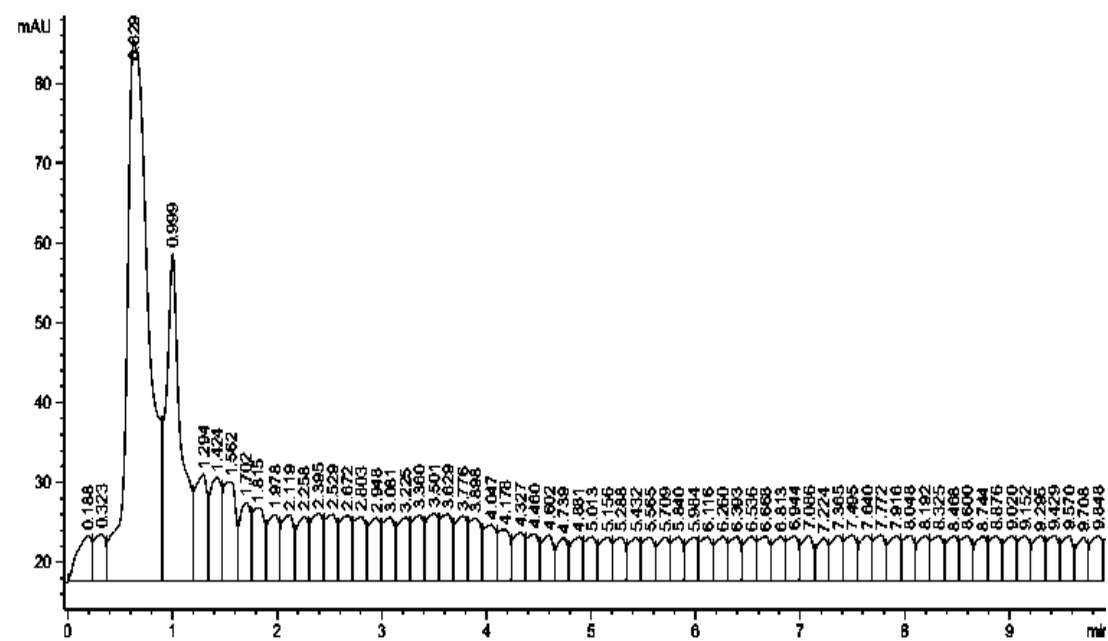


**Figure S4.** HPLC Results of liver tissue: (a) control group; (b) oleic acid group; (c) elaidic acid group; (d) Mujahid Ghee group; (e) Kausar Ghee group.

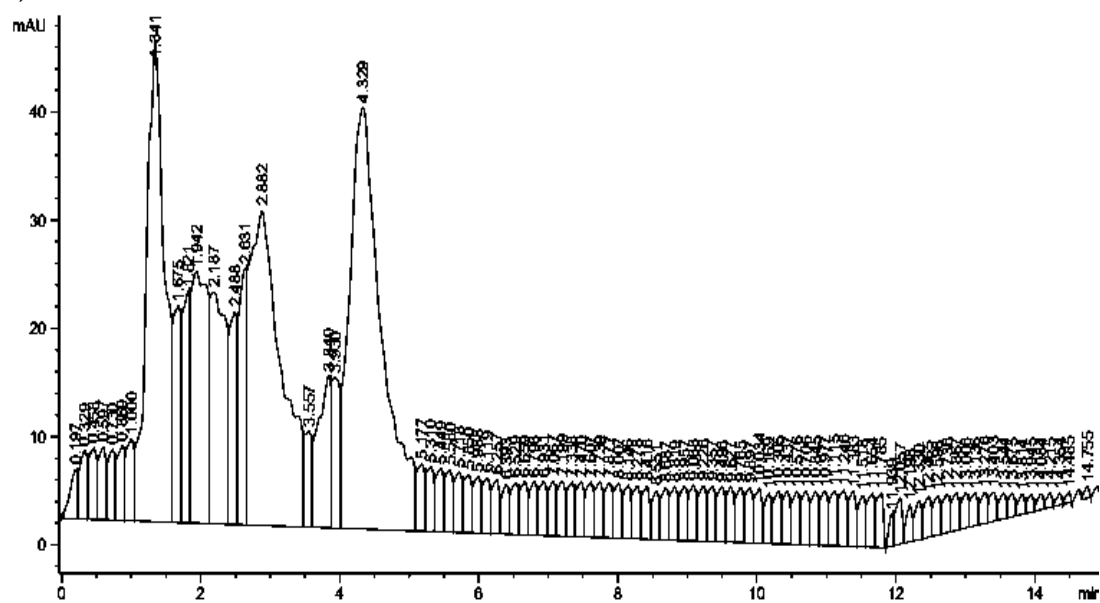
a)



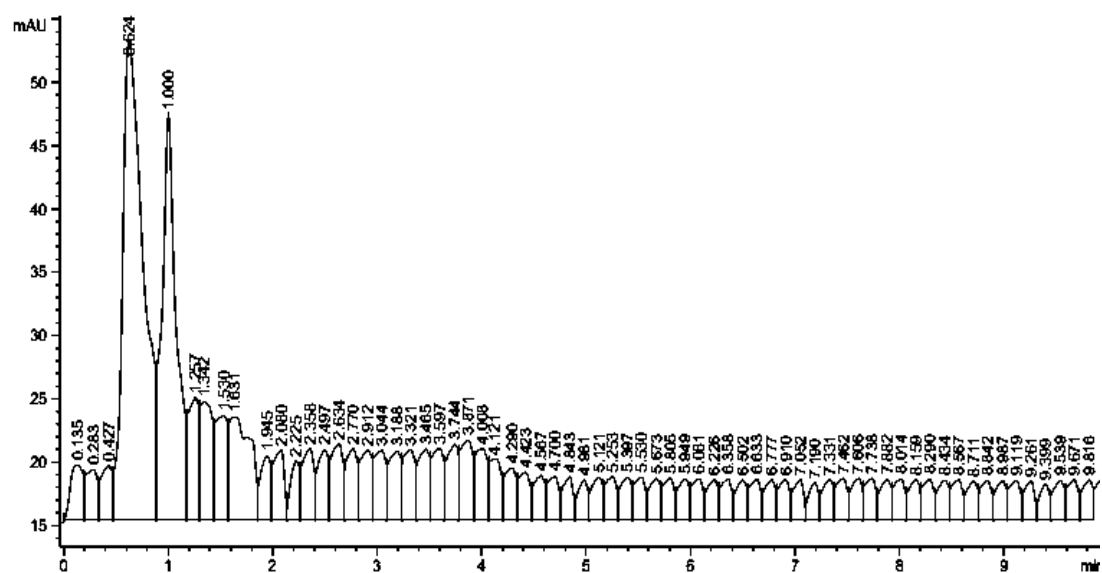
b)



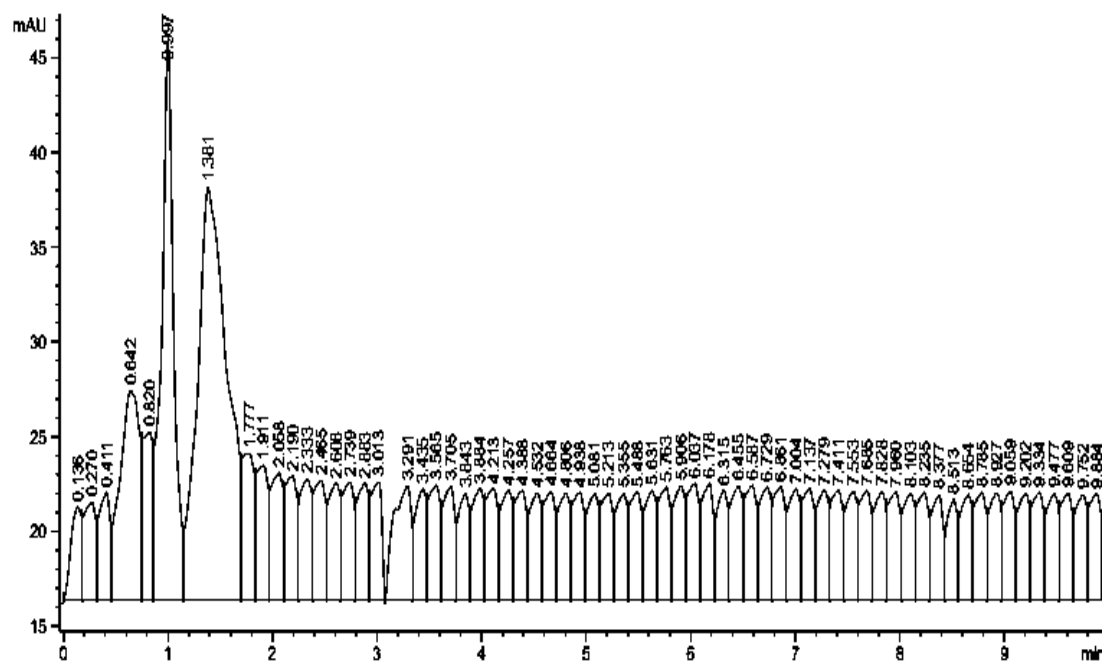
c)



d)



e)



**Figure S5.** HPLC Results of kidney tissue: (a) control group; (b) oleic acid group; (c) elaidic acid group; (d) Mujahid Ghee group; (e) Kausar Ghee group.