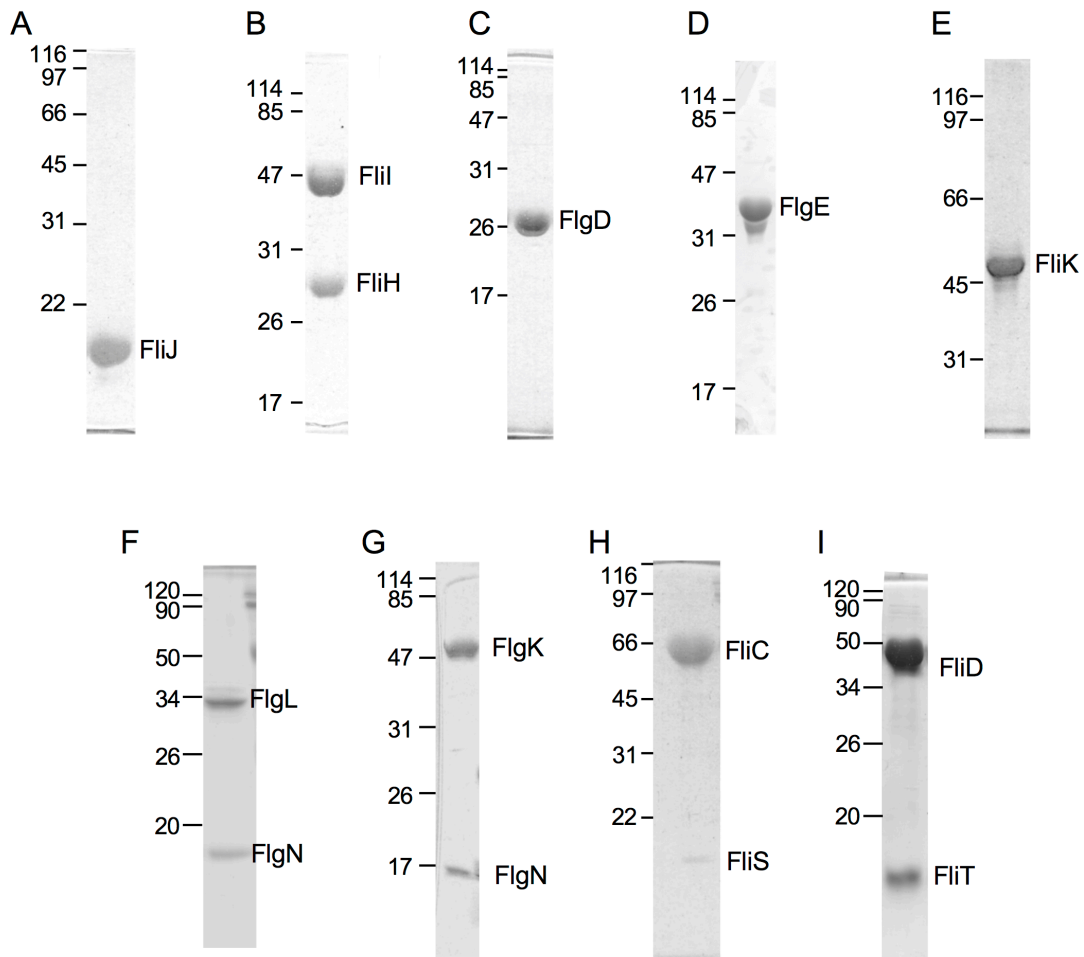
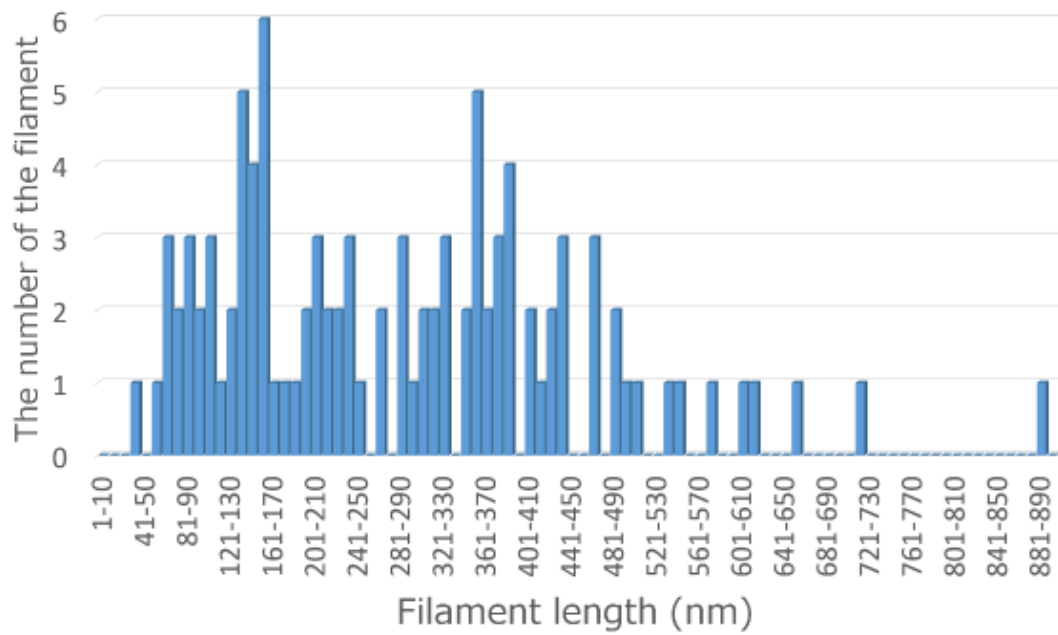


**Table S1.** Primer list for this study.

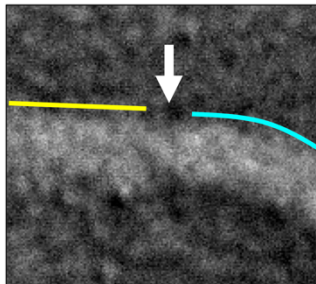
primer	sequence
pTrc99a-Nde1(+)	acacaggaacagcatatggaattcgagct
pTrc99a-Nde1(-)	agctcgaattccatagctgttctctgtgt
Nde1-fliS(+)	gggaattccatagtacaccgagcggtatcaaagcttat
BamH1-fliS(-)	cgcggatccttaacgagactcctggaaagatgcttcgg
Nde1-fliC(+)	gggaattccatatggcacaagtcatatacaaacagcctg
BamH1-fliC(-)	cgcggatccttaacgcagtaaagagaggacglttgagg
Nde1-fliT(+)	gggaattccatagacctcaaccgtggagtattcaaccgt
BamH1-fliT(-)	cgcggatccttatgagggcgccaggcgcatctggcagag
Nde1-fliD(+)	gggaattccatatggctcaattcatcattagggtggga
BamH1-fliD(-)	cgcggatcctcaggactgttcatactgtaaatgctg
Nde1-flgL(+)	gggaattccatagcgtatcagtaccagatgatgacgaa
BamH1-flgL(-)	cgcggatccttaccggttcaactggaaaagcgacattcc



**Figure S1.** SDS-PAGE analysis of purified proteins used in the in this study. (A) FliJ, (B) the FliH/FliI complex, (C) FlgD, (D) FlgE, (E) FliK, (F) the FlgL/FlgN complex, (G) the FlgK/FlgN complex, (H) the FliC/FliS complex and (I) the FliD/FliT complex.



**Figure S2.** Length distribution of the filament formed on the hook in the IMVs.



**Figure S3.** Magnified electron microscopic image of the hook-filament junction region of the hook-filament complex constructed in the IMV. The filament and the hook are indicated by yellow and blue lines, respectively, the hook filament junction is indicated by white arrow.