

Supplementary Material

Figure S1: Deconvolution of two peptides from the fraction A1 (eluted at 24.8min) corresponding to the fragments 2-10 and 110-117 of hemoglobin α chain.

>tr|A8DUV1|A8DUV1_MOUSE Alpha-globin OS=Mus musculus OX=10090 GN=Hbat1 PE=3 SV=1

1 **MVLSGEDKSN** IKAAWGKIGG HGAEYVAEAL ERMFASFPTT KTYFPHFVDV HGSAQVKGHG KKIADALASA AGHLDDLPGA LSALS~~DL~~HAH
 91 KLRVDPVNFK LLSHCLLVTL **ASHHPAD**FTP AVHASLDKFL ASVSTVLTSK YR

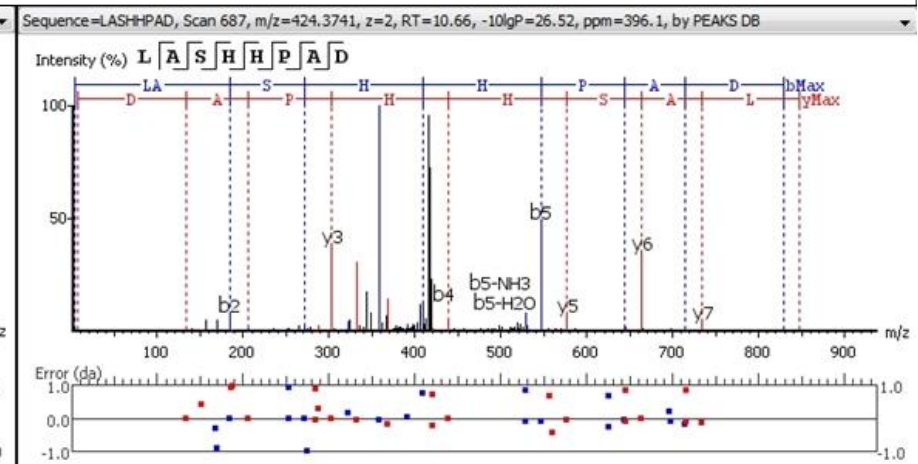
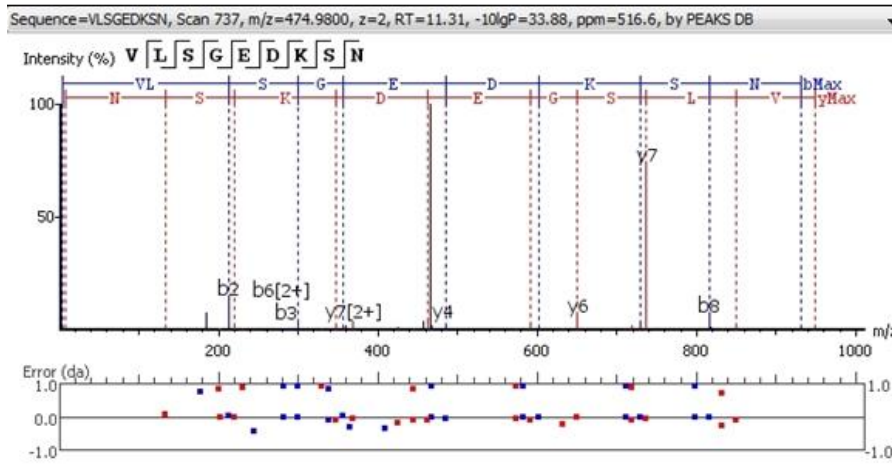


Figure S2: Deconvolution of three peptides from the fraction A2 (eluted at 64.5min) corresponding to the fragments 45-57, 75-95 and 119-145 of hemoglobin α chain.

>sp|P01942|HBA_MOUSE Hemoglobin subunit alpha OS=Mus musculus OX=10090 GN=Hba PE=1 SV=2

1 MVLSGEDKSN IKAAWGKIGG HGAEYGAEL ERMF**ASFPTT KTYFPHF**DVS HGSAQVKGHG KKVADALASA AGHLDDLPGA LSALSDLHAH
 91 **KLRVDPVNFK** LLSHCLLVTL **ASHHPADFTP AVHASLDKFL ASVSTVLT**SK YR

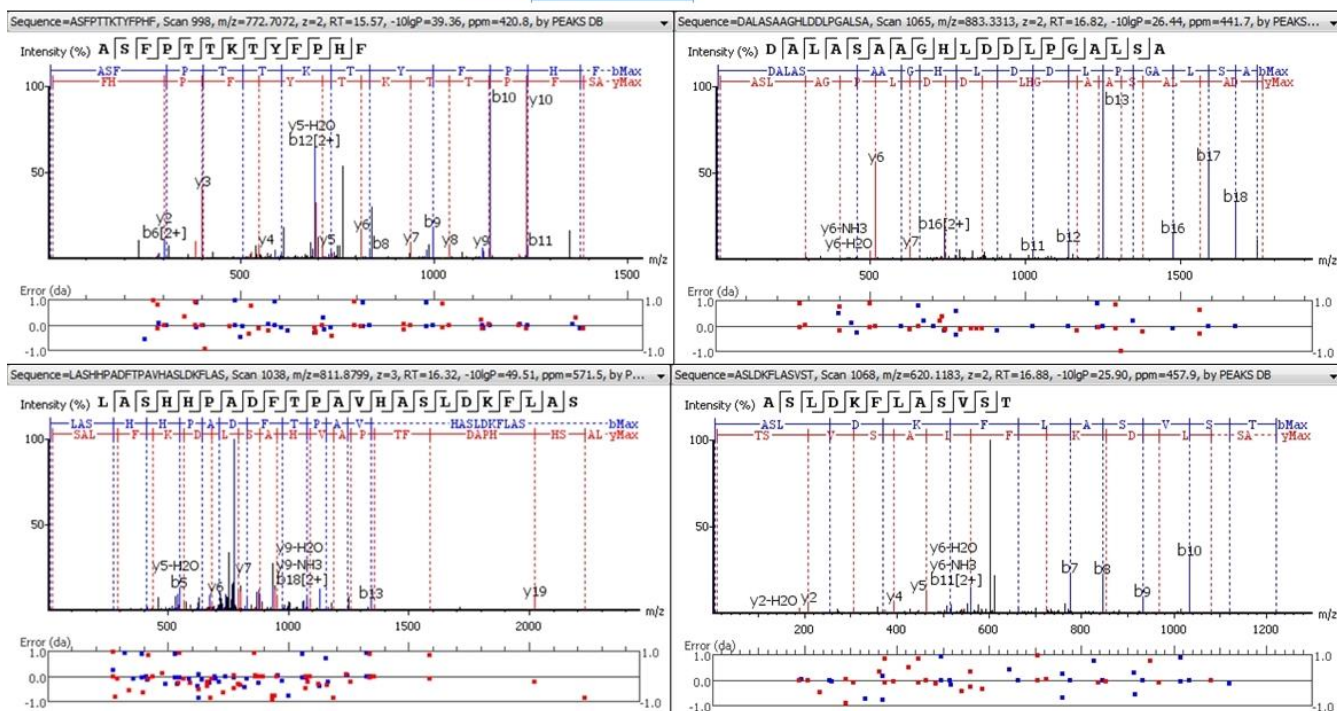


Figure S3: Deconvolution of three peptides from the fraction A3 (eluted at 81.8min) corresponding to the fragments 45-58, 76-104 and 106-147 of hemoglobin α chain

>tr|T1DQ28|T1DQ28_ANOAQ Putative hemoglobin subunit alpha (Fragment) OS=Anopheles aquasalis OX=42839 PE=2 SV=1

1 VLSGEDKSN I KAAWGKIGGH GAEYGAEALE RMFASFPTTK TYFPHFVSH GSAQVKGHGK KVADALATAA GHLDLPGAL SALS~~DL~~HAHK

91 LRVDPVNFKL LSHCLLVTLA SHHPADFTP A VHASLDKFLA SVSTVLTSKY R

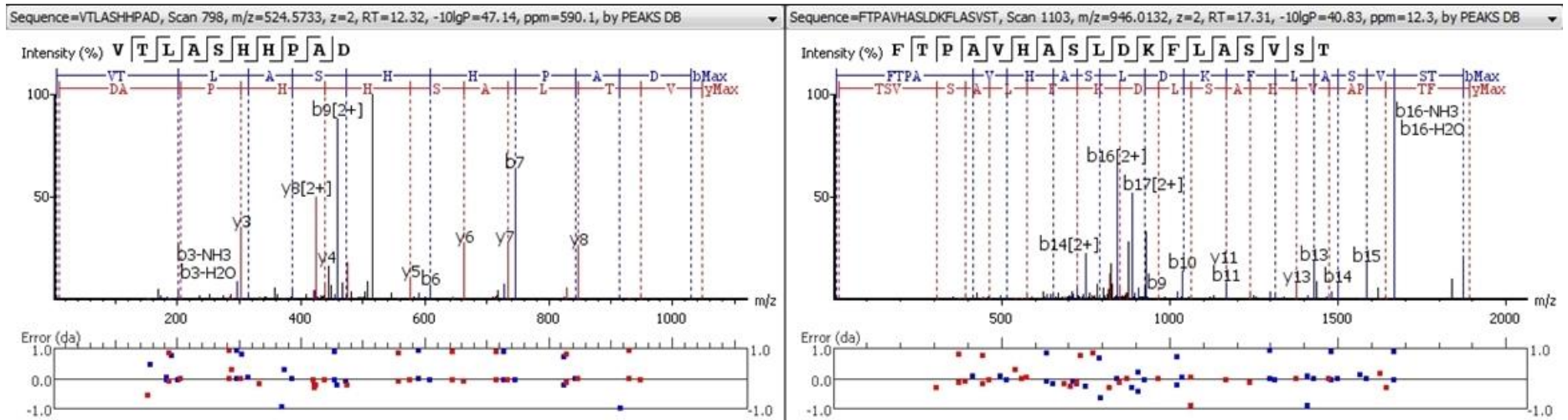


Figure S4: Deconvolution of two peptides from the fraction B1 (eluted at 28.28min) corresponding to the fragments 2-10 and 56-77 of hemoglobin β chain.

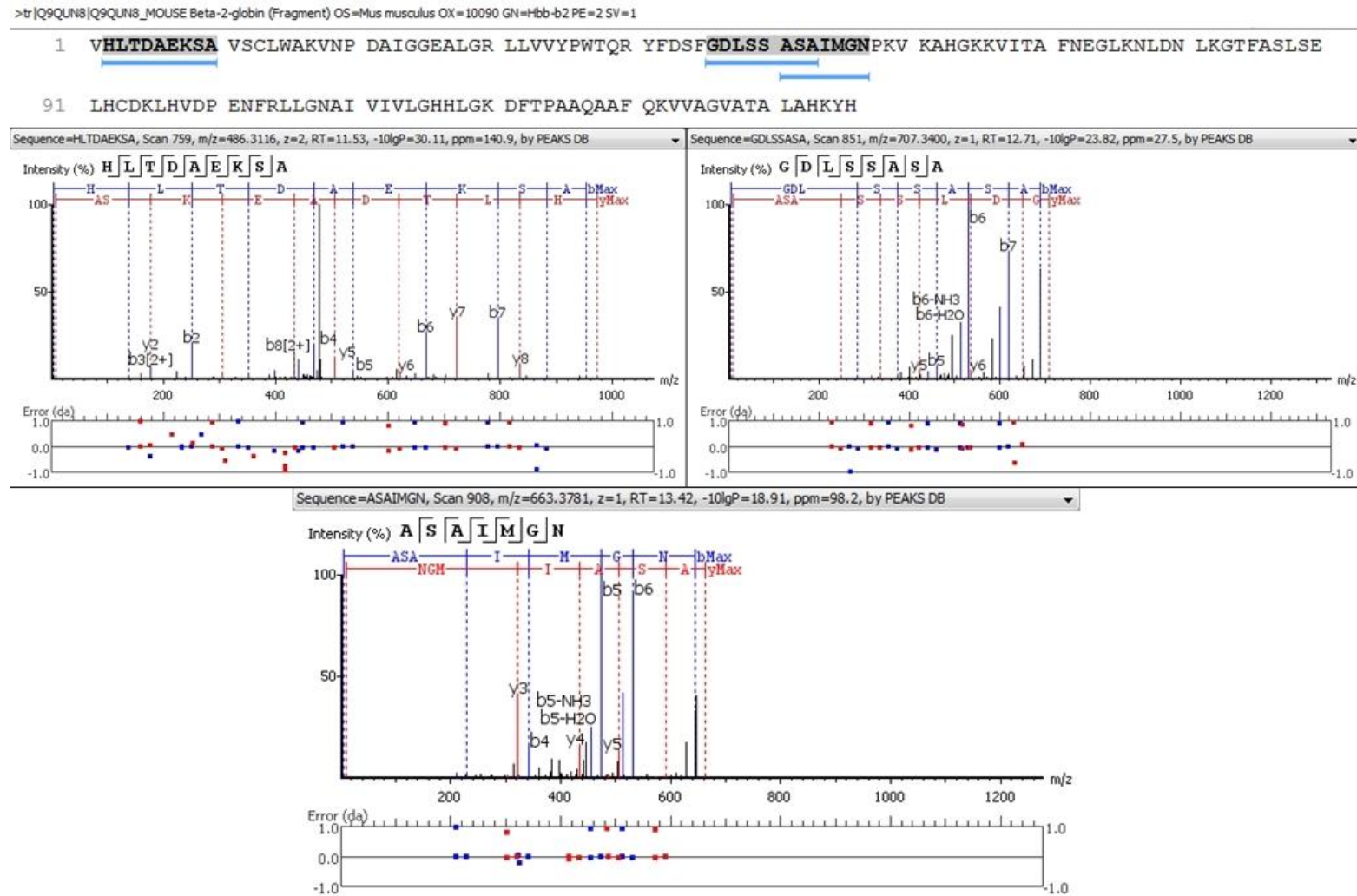


Figure S5: Deconvolution of five peptides from the fraction B2 (eluted at 28.28min) corresponding to the fragments 1-10, 16-27, 49-70, 73-80 and 122-136 of hemoglobin β chain.

>tr|Q54AH9|Q54AH9_MOUSE Beta-2-globin (Fragment) OS=Mus musculus OX=10090 GN=hbb-b2 PE=2 SV=1

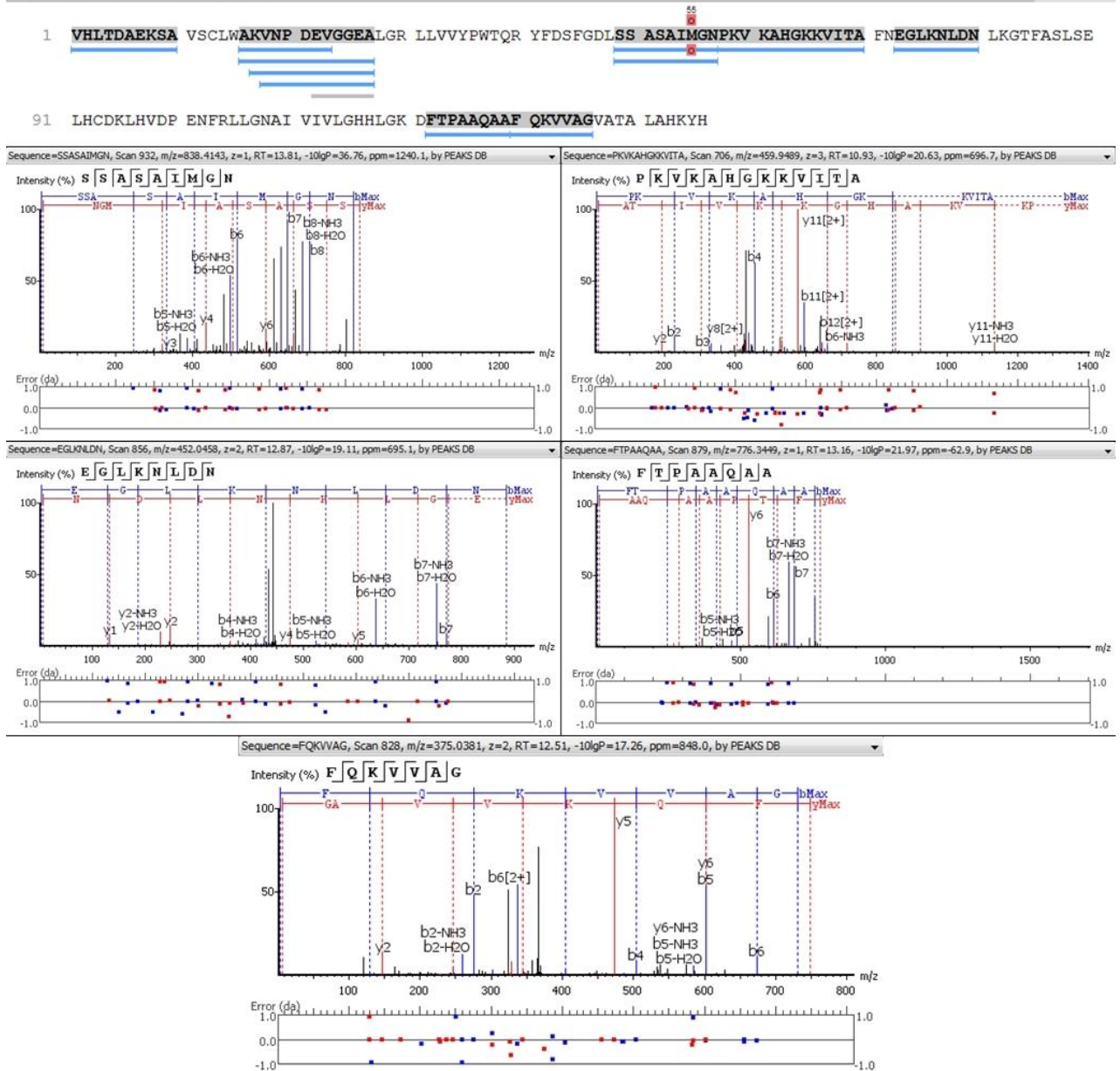


Figure S6: Deconvolution of three peptides from the fraction B3 (eluted at 43min) corresponding to the fragments 1-12, 58-72 and 112-129 of hemoglobin β chain.

>tr|Q9QUN8|Q9QUN8_MOUSE Beta-2-globin (Fragment) OS=Mus musculus OX=10090 GN=Hbb-b2 PE=2 SV=1

1 **VHLTDAEKSA** VSCLWAKVNP DAIGGEALGR LLVVYPWTQR YFDSFGDLSS ASAIMGN**PKV KAHGKKVITA FNEGLKNLDN** LKGTFFASLSE

91 LHCDKLHVDP ENFRLLGNAI **VIVLGHHLGK DFTPAQA**A F QKVVAGVATA LAHKYH

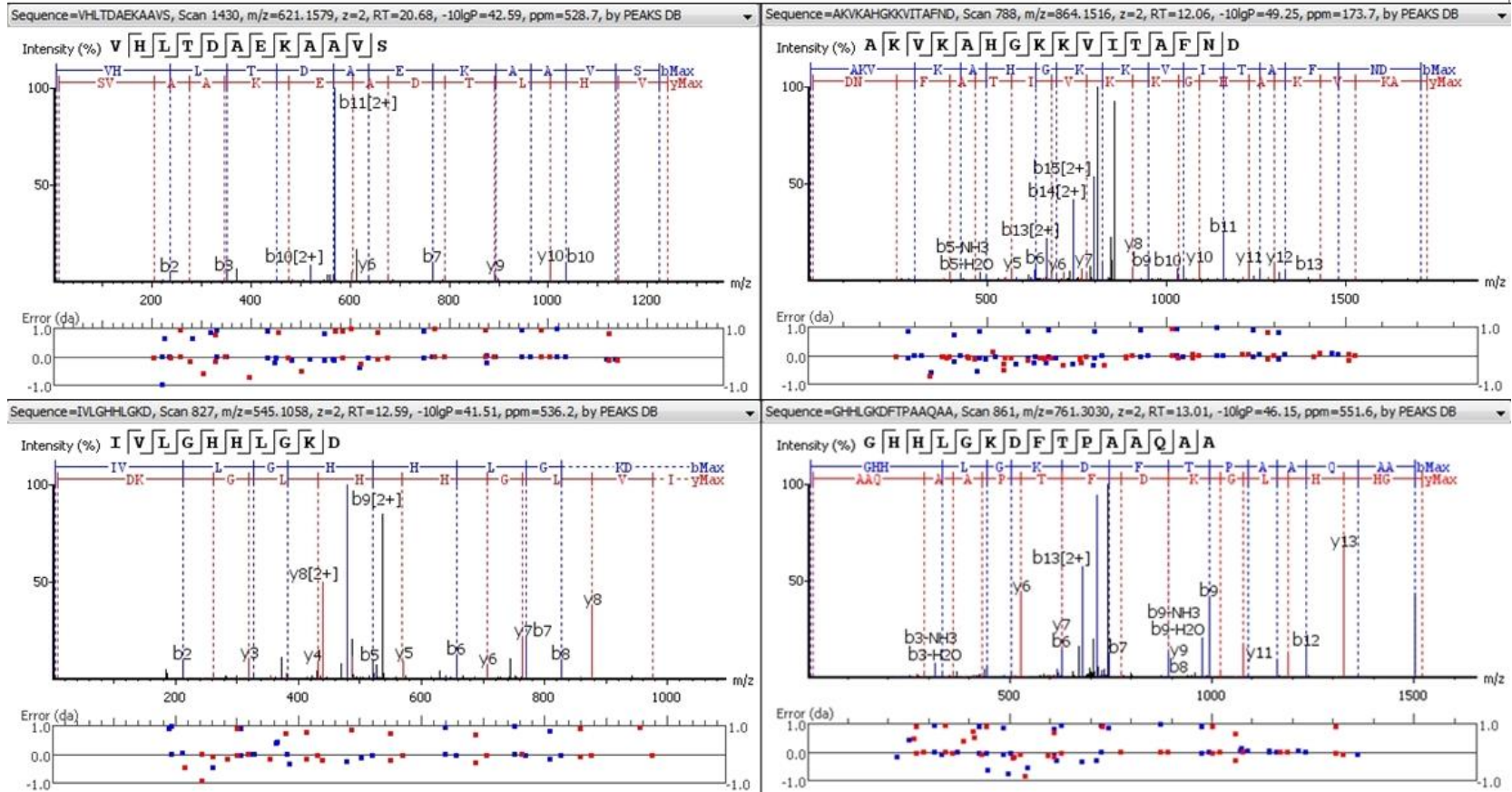


Figure S7: Deconvolution of three peptides from the fraction B4 (eluted at 48.1min) corresponding to the fragments 2-14, 59-88 and 135-147 of hemoglobin β chain.

>tr|A8DUK0|A8DUK0_MOUSE Beta-globin OS=Mus musculus OX=10090 GN=Hbbt1 PE=3 SV=1

1 MVHLTDAEKA AVSC LLWGKVN SDEVGGEALG RLLVVYPWTQ RYFDSFGDLS SASAIMGN AK VKAHGKKVIT AFNDGLNHLD SLKGTFFASLS

91 ELHCDKLHVD PENFRLLGNM IVIVLGHHLG KDFTPAAQAA FQKVV AGVAT ALAHKYH

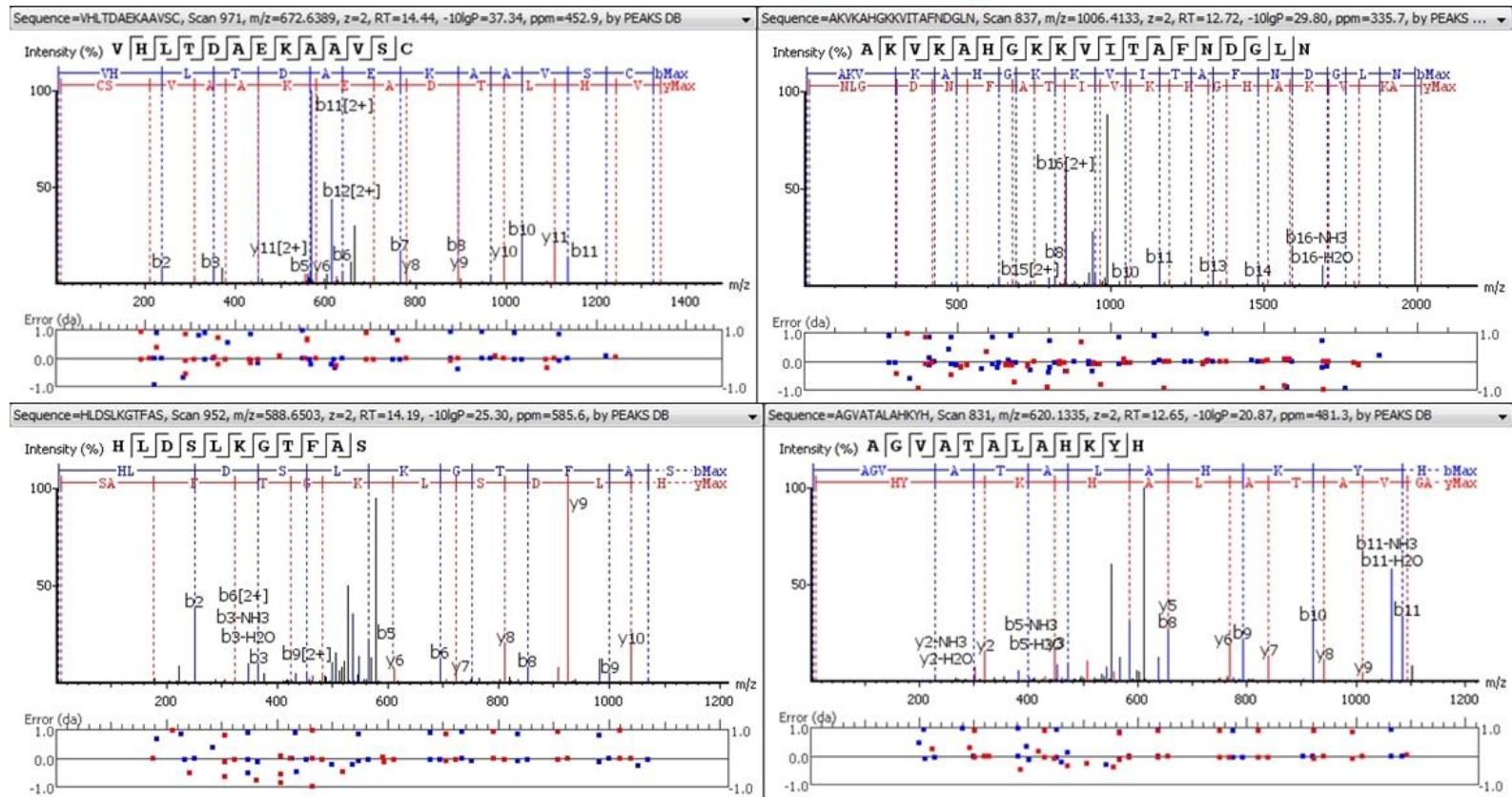


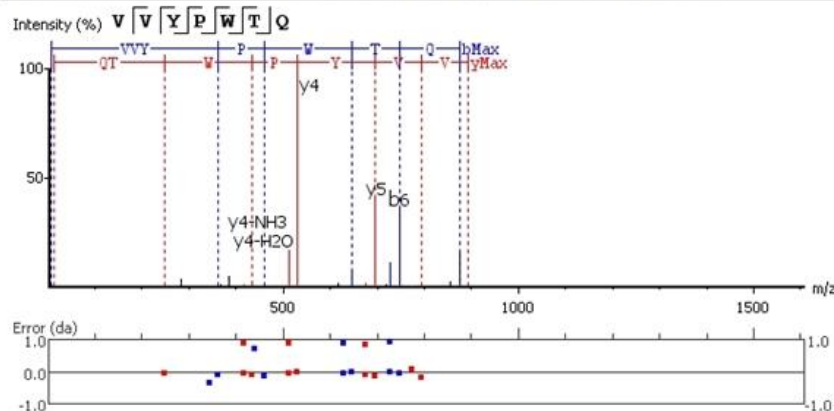
Figure S8: Deconvolution of four peptides from the fraction B5 (eluted at 56.4min) corresponding to the fragments 34-40, 59-71, 75-86 and 90-100 of hemoglobin β chain.

>tr|E9Q223|E9Q223_MOUSE Hemoglobin, beta adult s chain (Fragment) OS=Mus musculus OX=10090 GN=Hbb-bs PE=1 SV=1

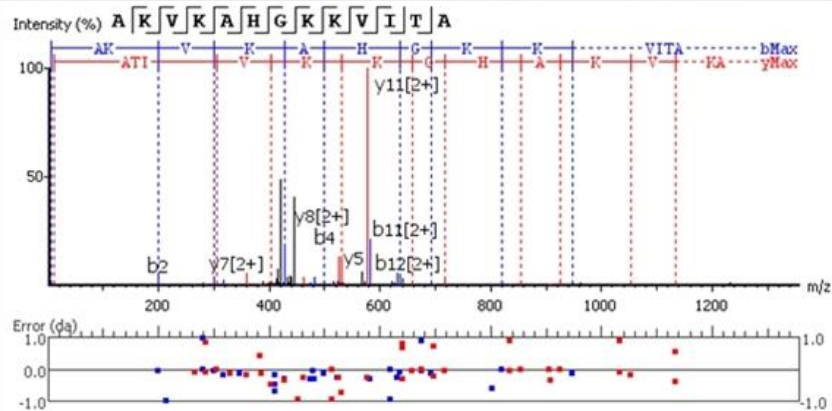
1 MVHLTDAEKA AVSGLWGKVN ADEVGGEALG RLL**VVYPWTQ** RYFDSFGDLS SASAIMGNAK **VKAHGKKVITAF**ND**GLNHLD** **SLKGTFFASLS**

91 **ELHCDKLHVD** PEN

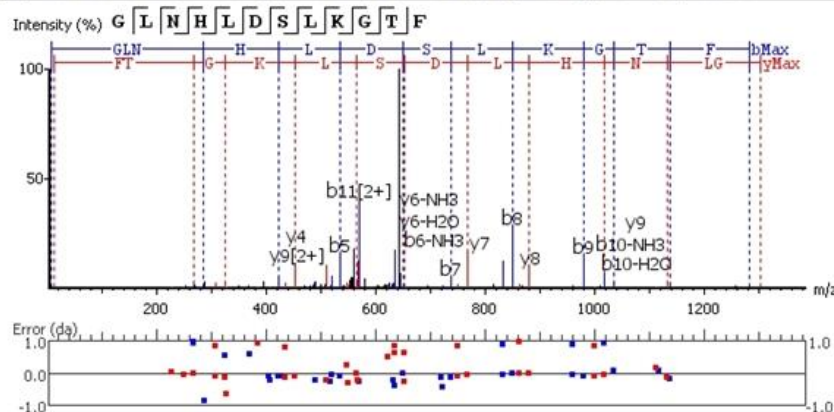
Sequence=VVYPWTQ, Scan 1077, m/z=893.4632, z=1, RT=16.24, -10lgP=19.73, ppm=1129.5, by PEAKS DB



Sequence=AKVKAHGKKVITA, Scan 698, m/z=451.2678, z=3, RT=10.87, -10lgP=17.85, ppm=689.7, by PEAKS DB



Sequence=GLNHLDLTKGTF, Scan 1025, m/z=651.4217, z=2, RT=15.41, -10lgP=32.20, ppm=116.4, by PEAKS DB



Sequence=SELHCDKLHVD, Scan 860, m/z=433.0341, z=3, RT=13.15, -10lgP=22.32, ppm=1145.4, by PEAKS DB

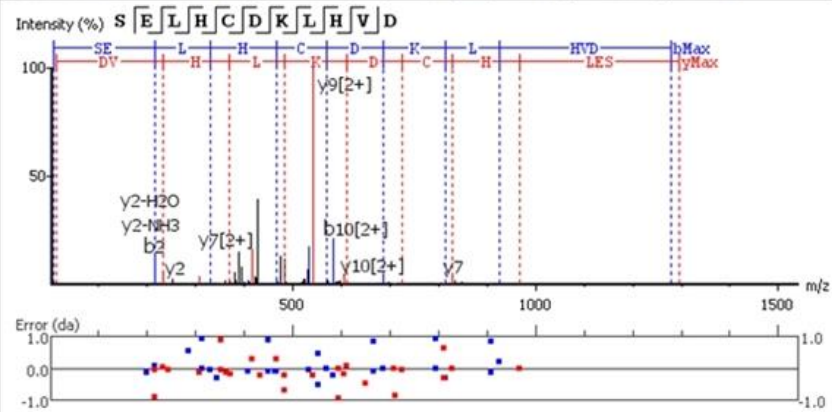


Figure S9: Deconvolution of five peptides from the fraction B6 (eluted at 61.7min) corresponding to the fragments 2-15, 21-33, 90-100, 104-110 and 131-147 of hemoglobin β chain.

>sp|P02088|HBB1_MOUSE Hemoglobin subunit beta-1 OS=Mus musculus OX=10090 GN=Hbb-b1 PE=1 SV=2

1 MVHLTDAEKA AVSCLWGKVN SDEVGGEALG RLLVVYPWTQ RYFDSFGDLS SASAIMGNAK VKAHGKKVIT AFNDGLNHL D SLKGTFA**S**

91 ELHCDKLHVD PENFRLLGNM IVIVLGHHLG KDFTPAQAQA FQKVVAGVAT ALAHKYH

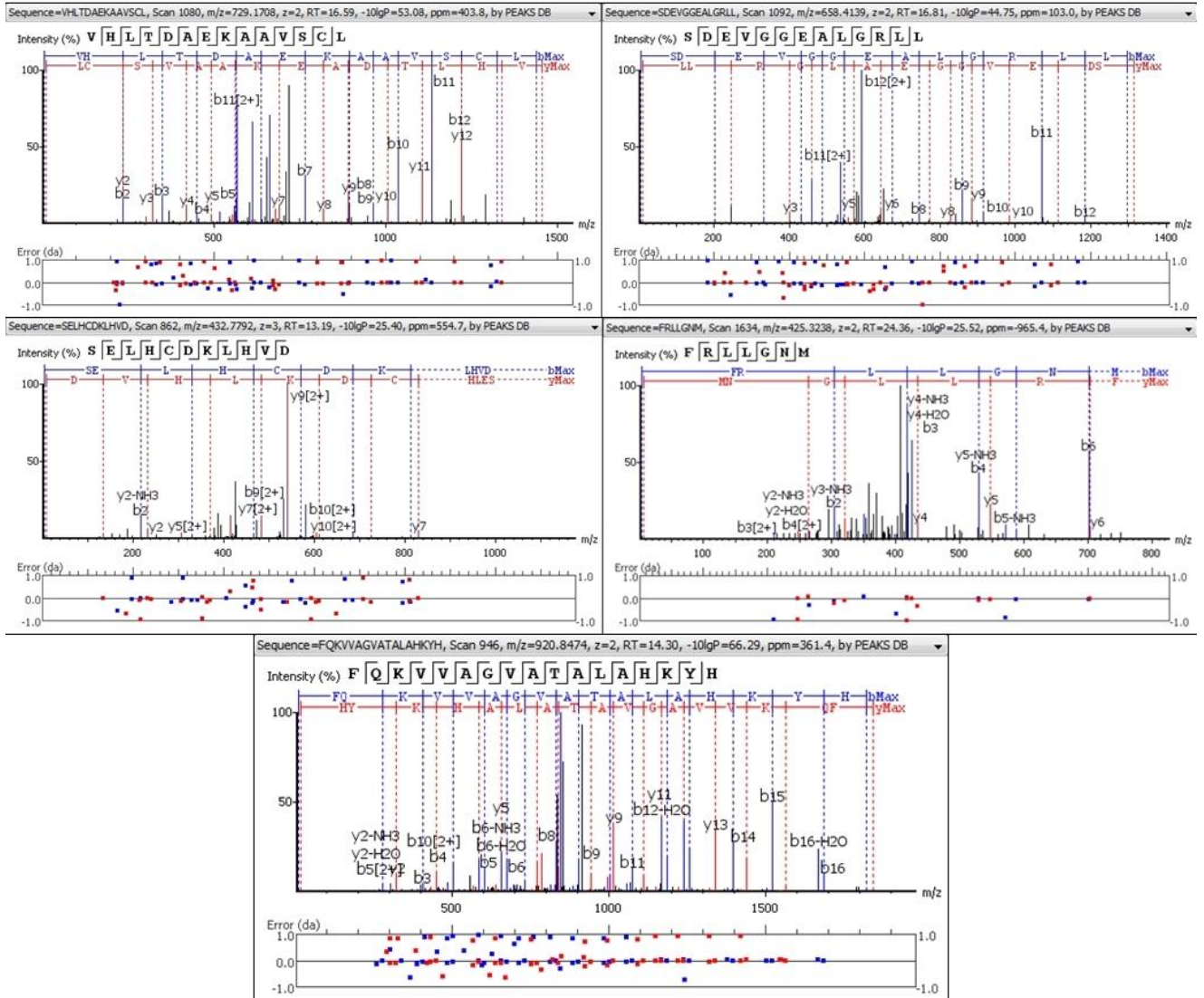


Figure S10: Deconvolution of two peptides from the fraction B2 (eluted at 93.7min) corresponding to the fragments 100-107 and 112-146 of hemoglobin β chain.

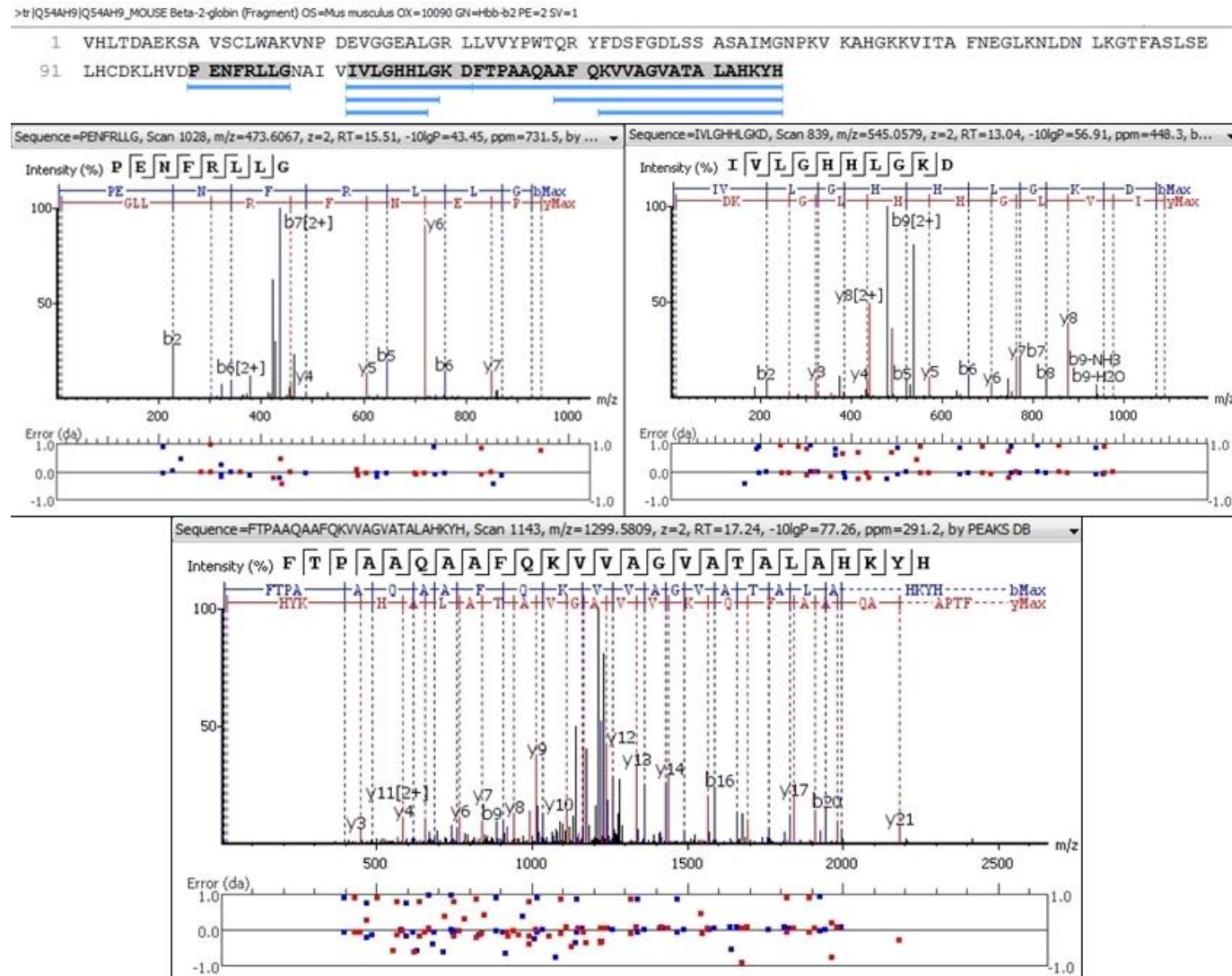


Figure S11: Deconvolution of the main peptide from the fraction A1 (eluted at 24.8min) corresponding to the fragment 2-10 of hemoglobin α chain.

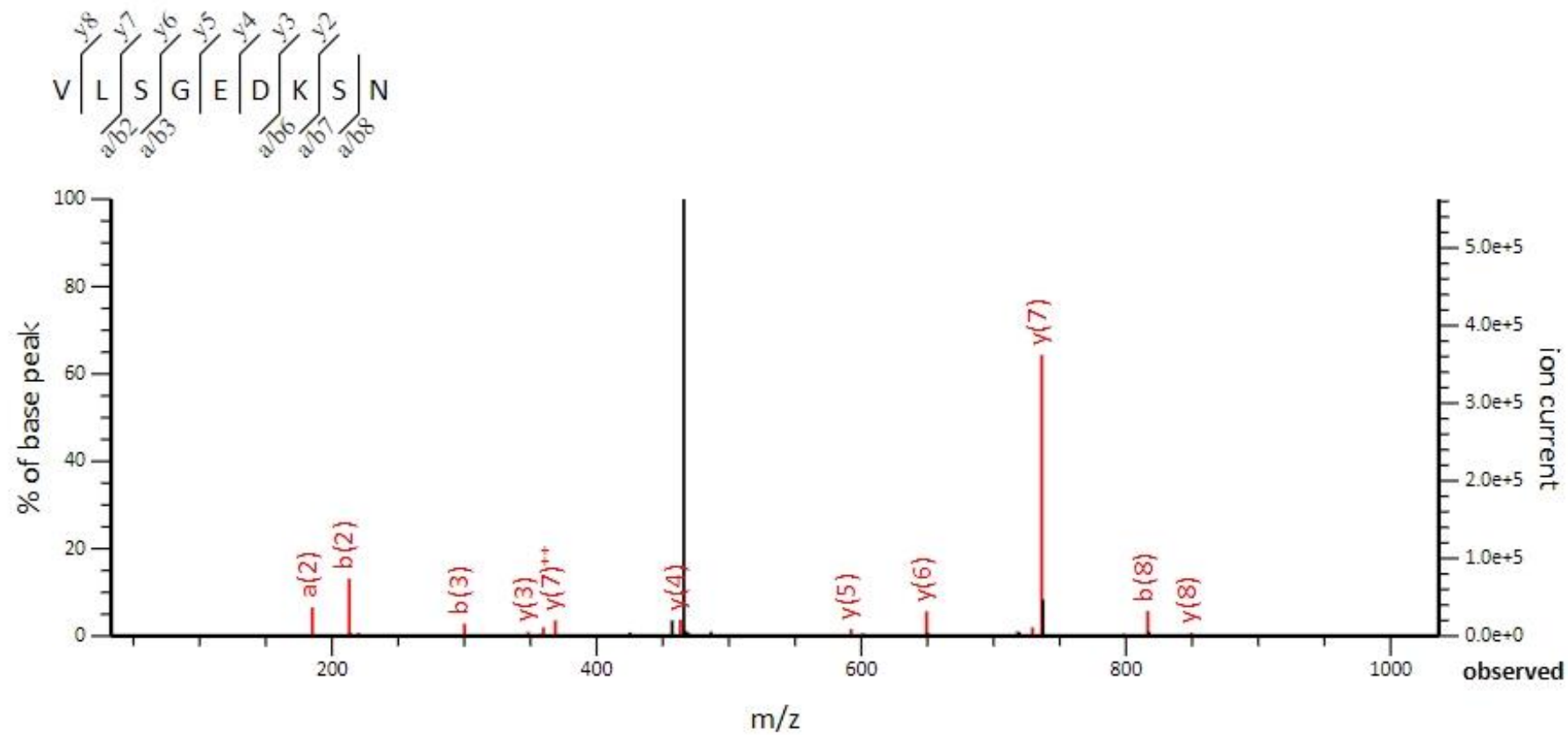


Figure S12: Deconvolution of the main peptide from the fraction A2 (eluted at 64.5 min) corresponding to the fragment 77-95 of he moglobin α chain.

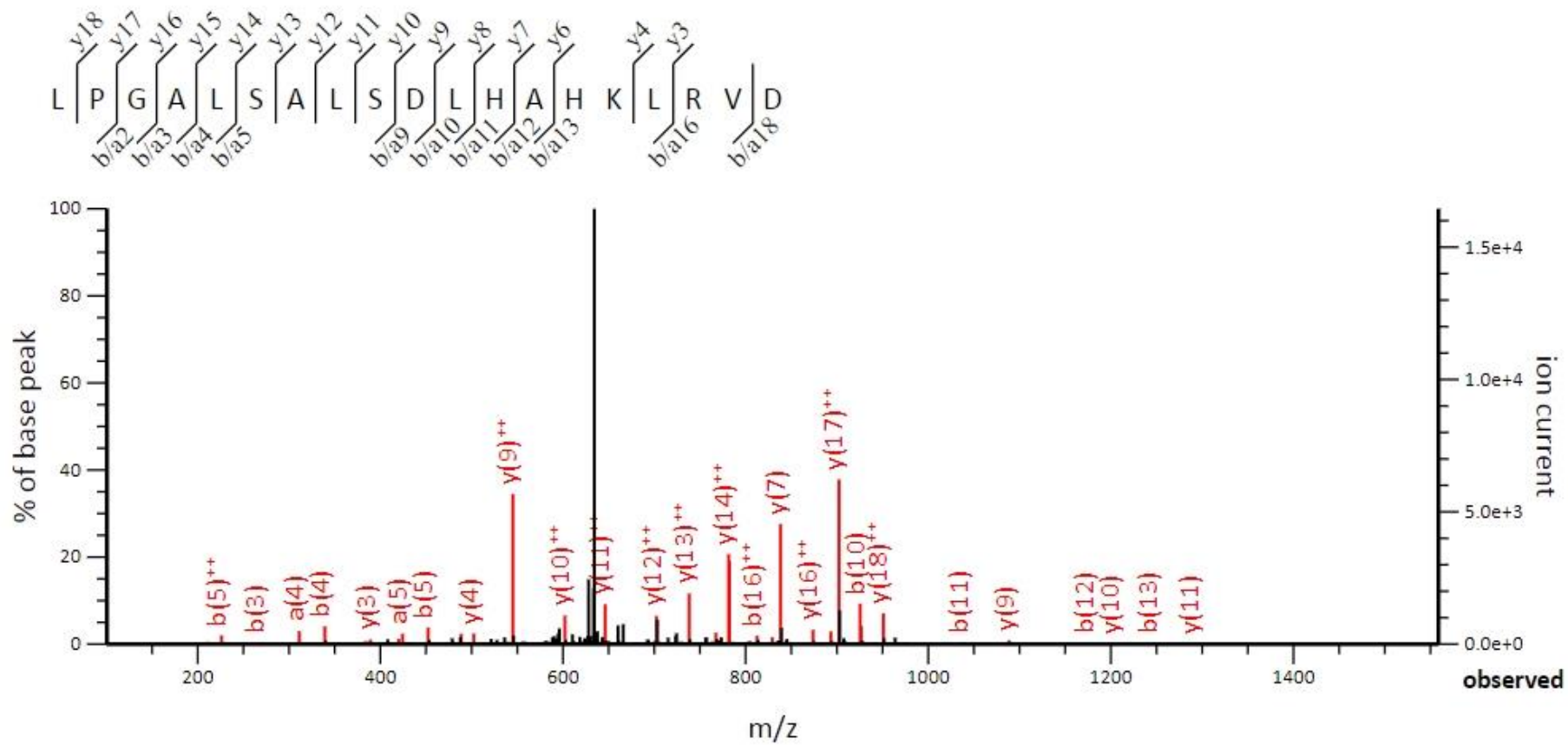


Figure S13: Deconvolution of the main peptide from the fraction A3 (eluted at 81.8 min) corresponding to the fragment 77-95 of he moglobin α chain.

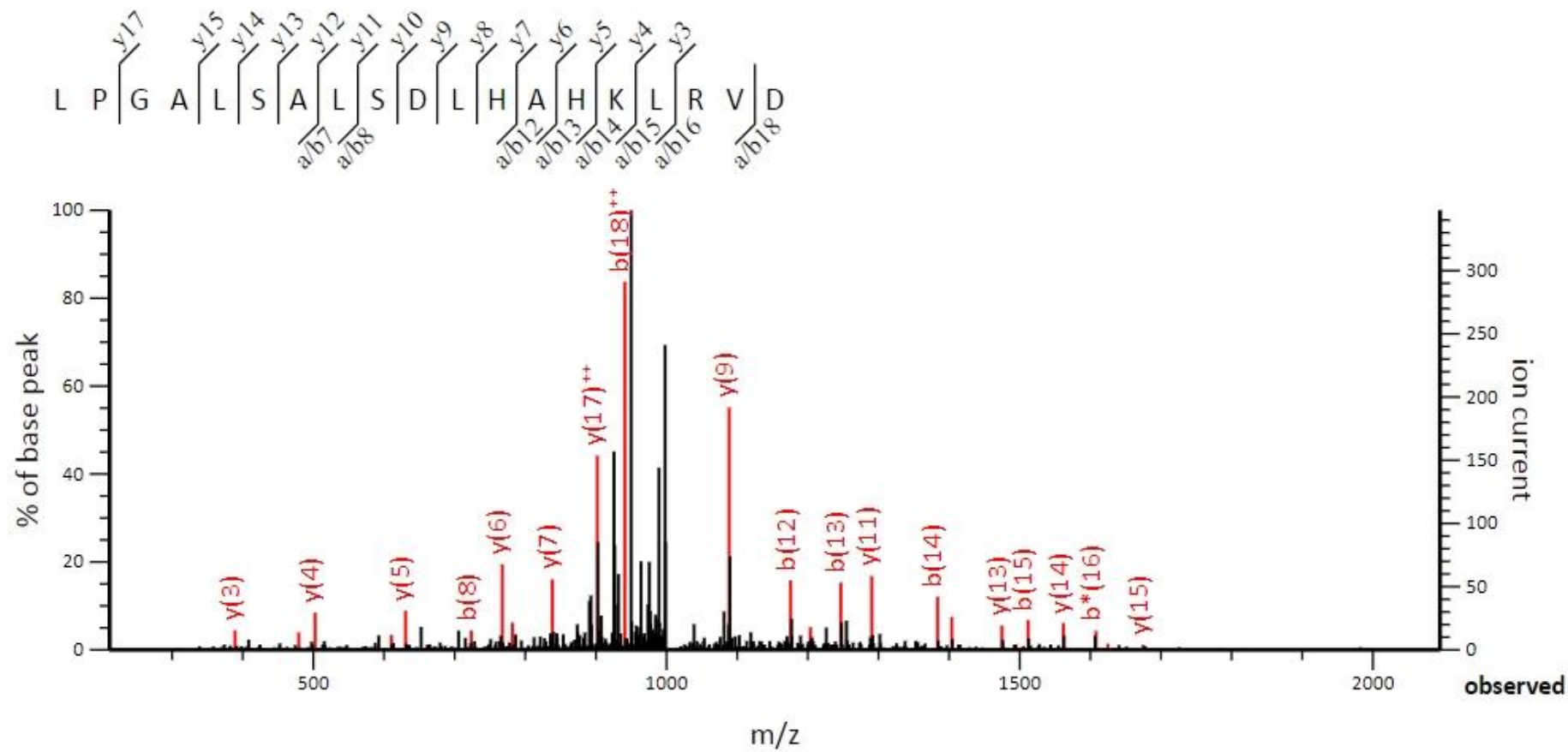


Figure S14: Deconvolution of the main peptide from the fraction B1 (eluted at 28.8 min) corresponding to the fragment 2-10 of hemoglobin β 2 chain.

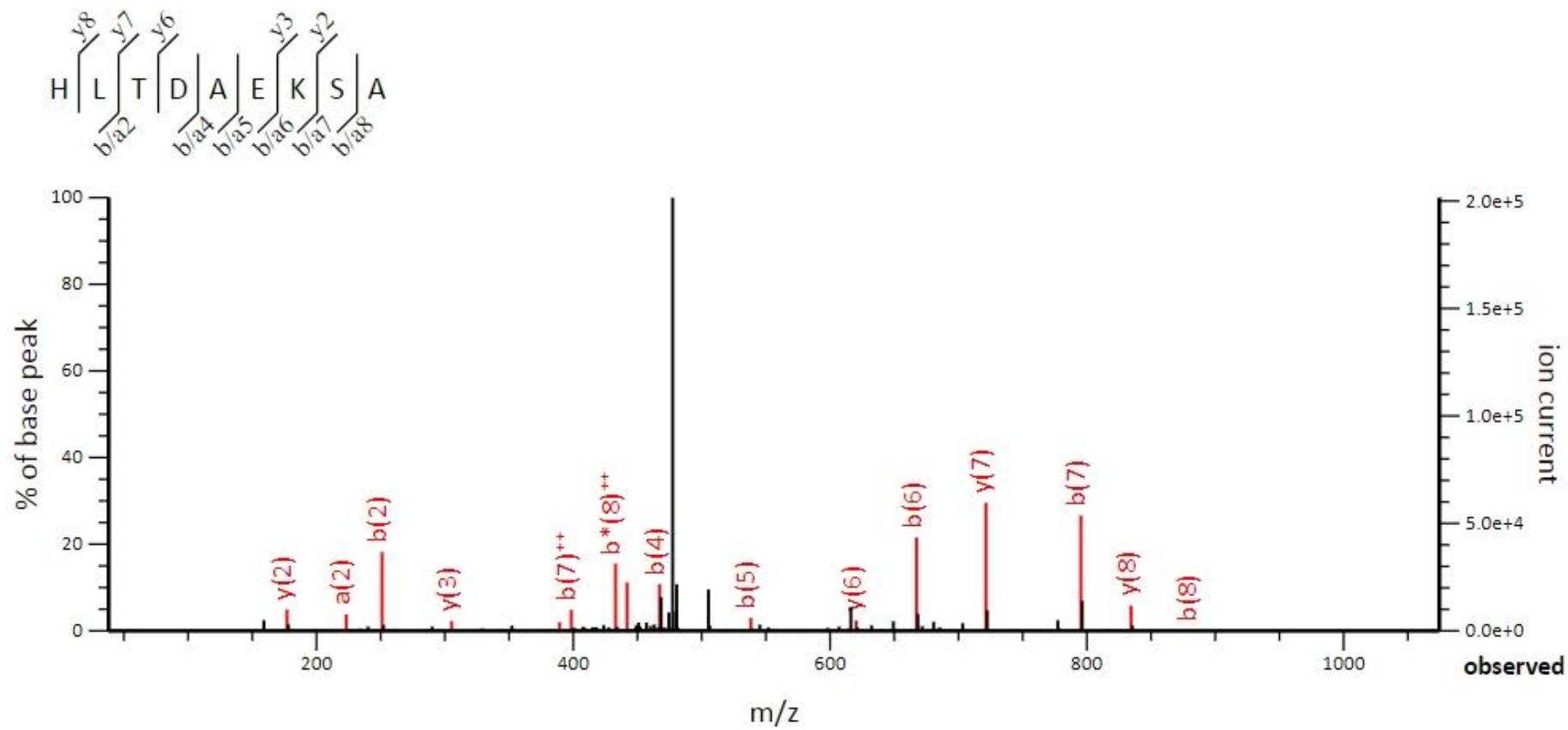


Figure S15: Deconvolution of the main peptide from the fraction B2 (eluted at 35.5 min) corresponding to the fragment 1-10 of hemoglobin β 2 chain.

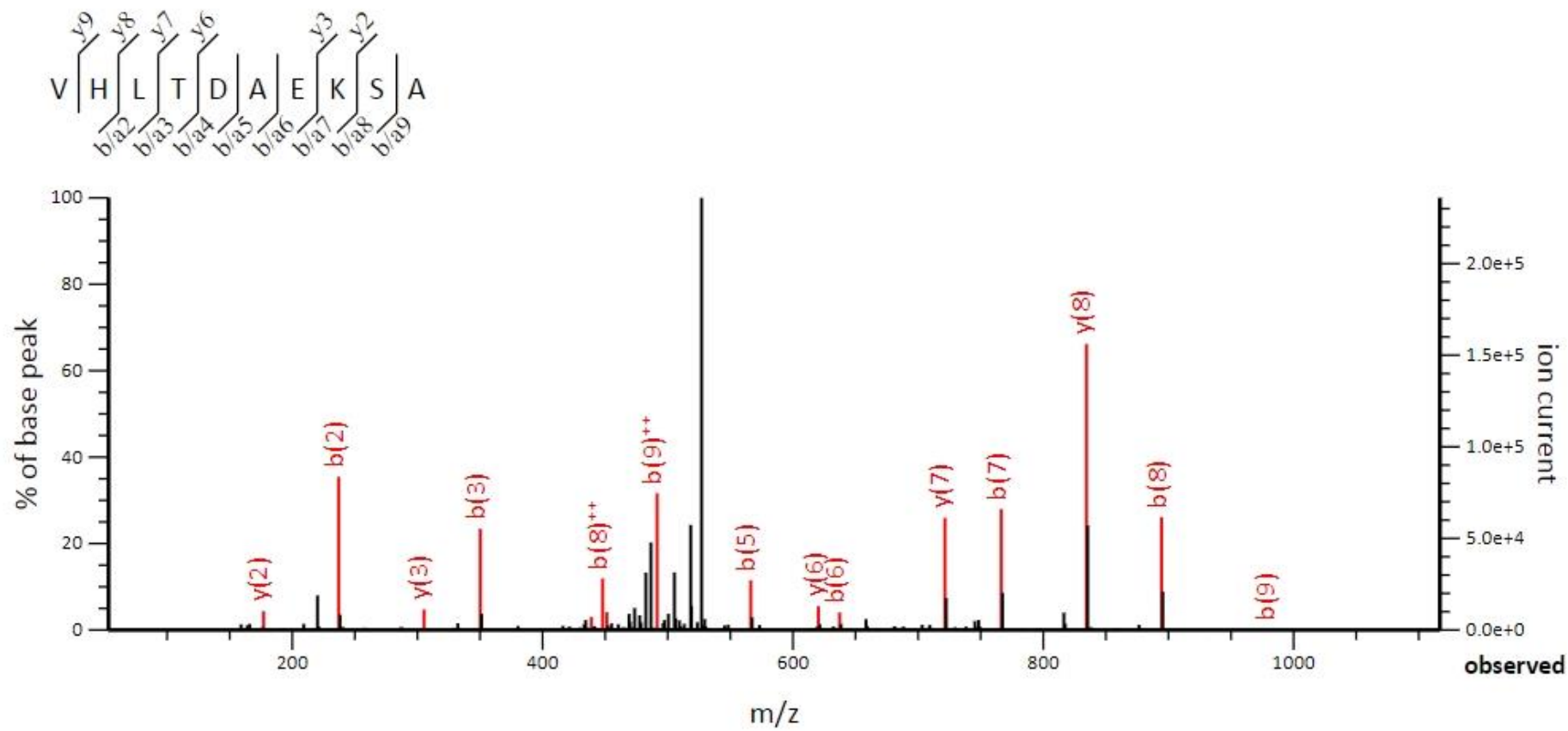


Figure S16: Deconvolution of the main peptide from the fraction B3 (eluted at 43.0 min) corresponding to the fragment 59-74 of hemoglobin β 1 chain.

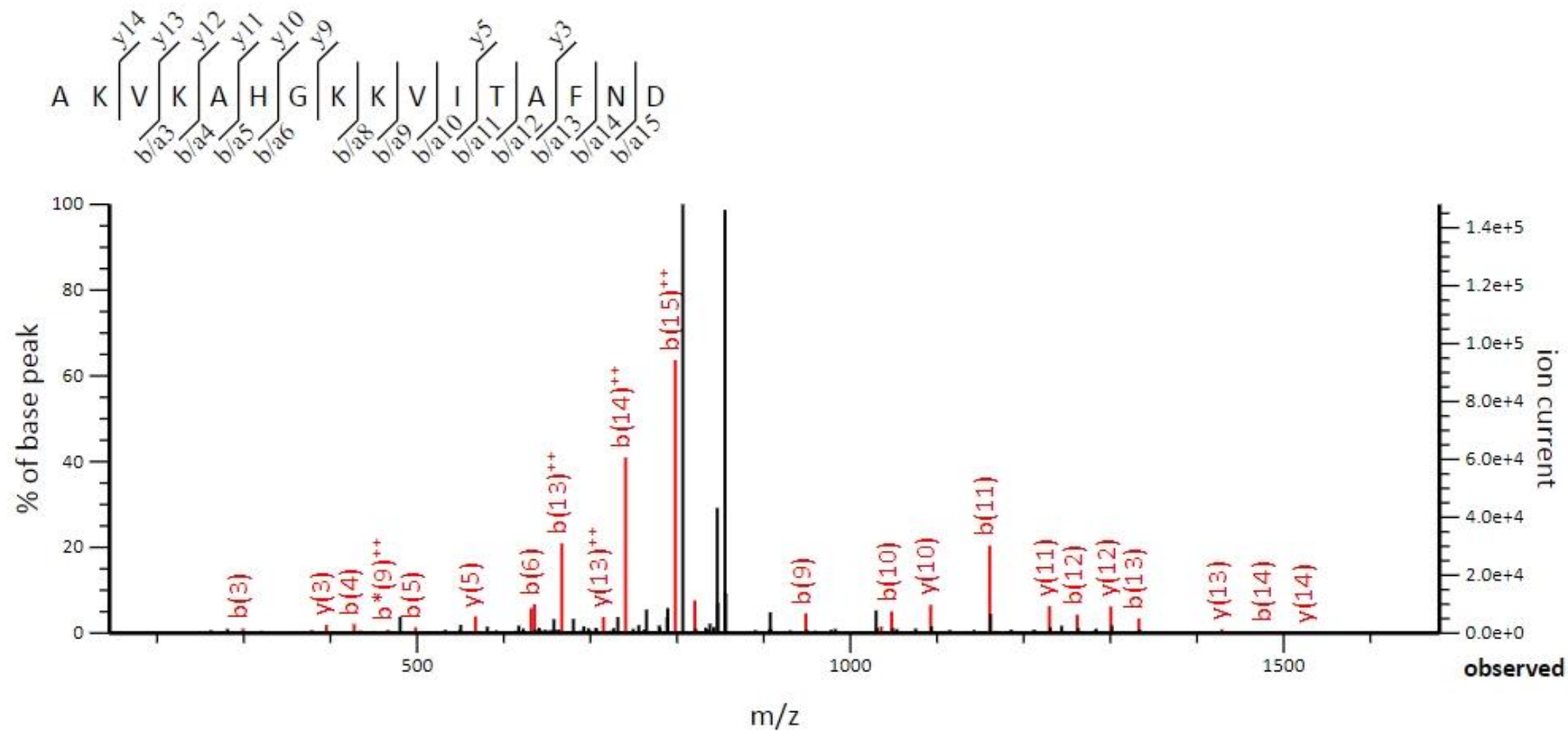


Figure S17: Deconvolution of the main peptide from the fraction B4 (eluted at 48.1 min) corresponding to the fragment 59-77 of hemoglobin β 1 chain.

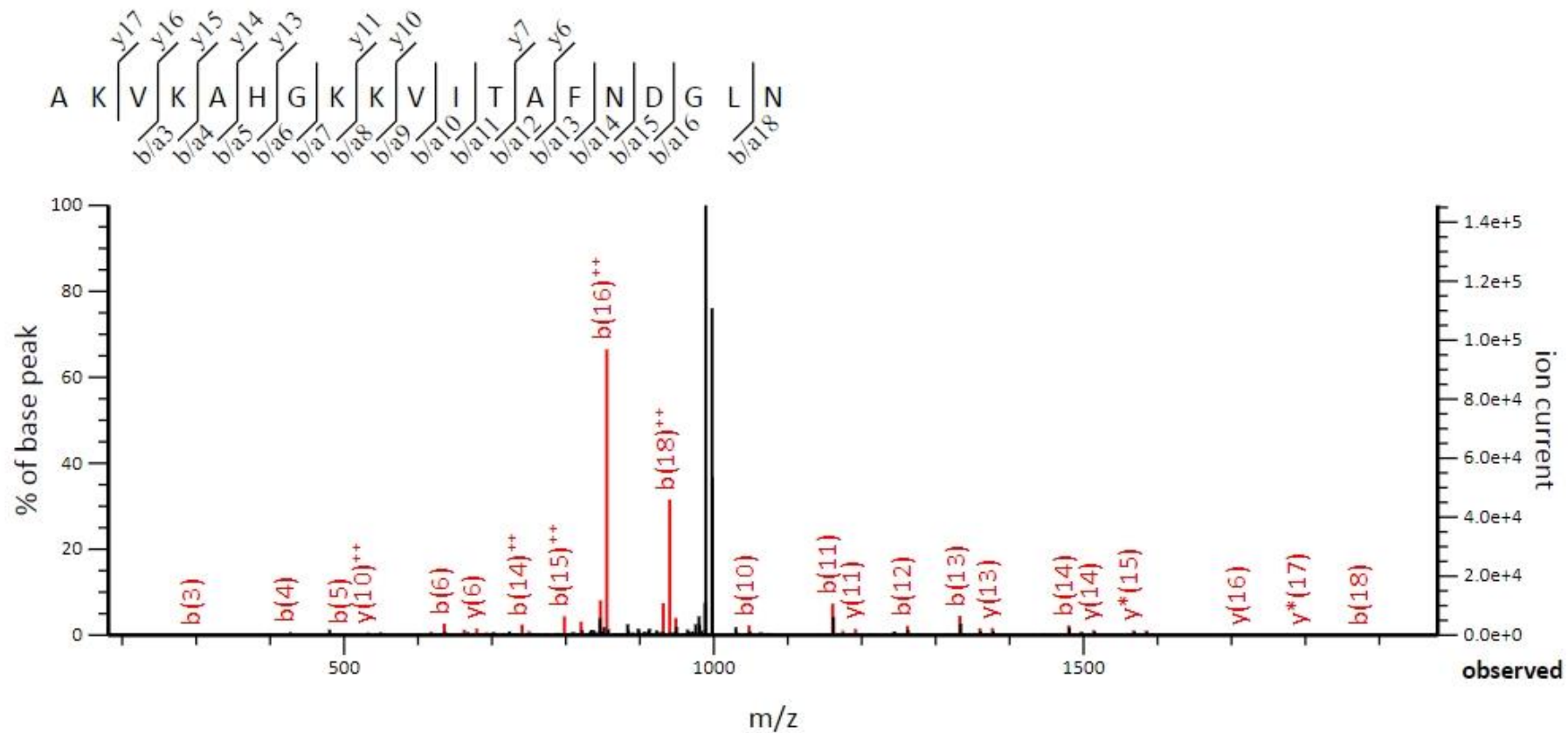


Figure S18: Deconvolution of the main peptide from the fraction B5 (eluted at 56.4 min) corresponding to the fragment 75-84 of hemoglobin β 1 chain.

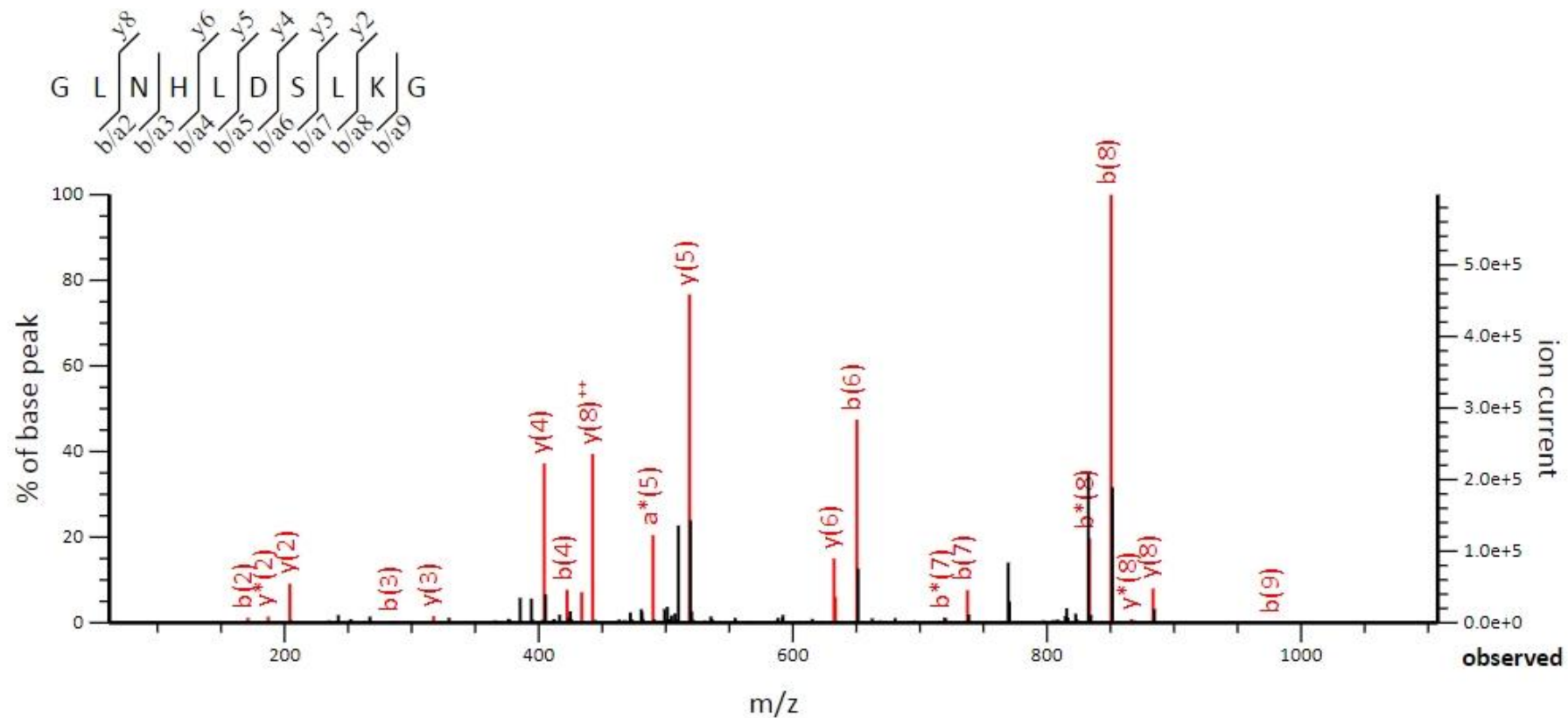


Figure S19: Deconvolution of the main peptide from the fraction B6 (eluted at 61.7 min) corresponding to the fragment 131-147 of hemoglobin β 1 chain.

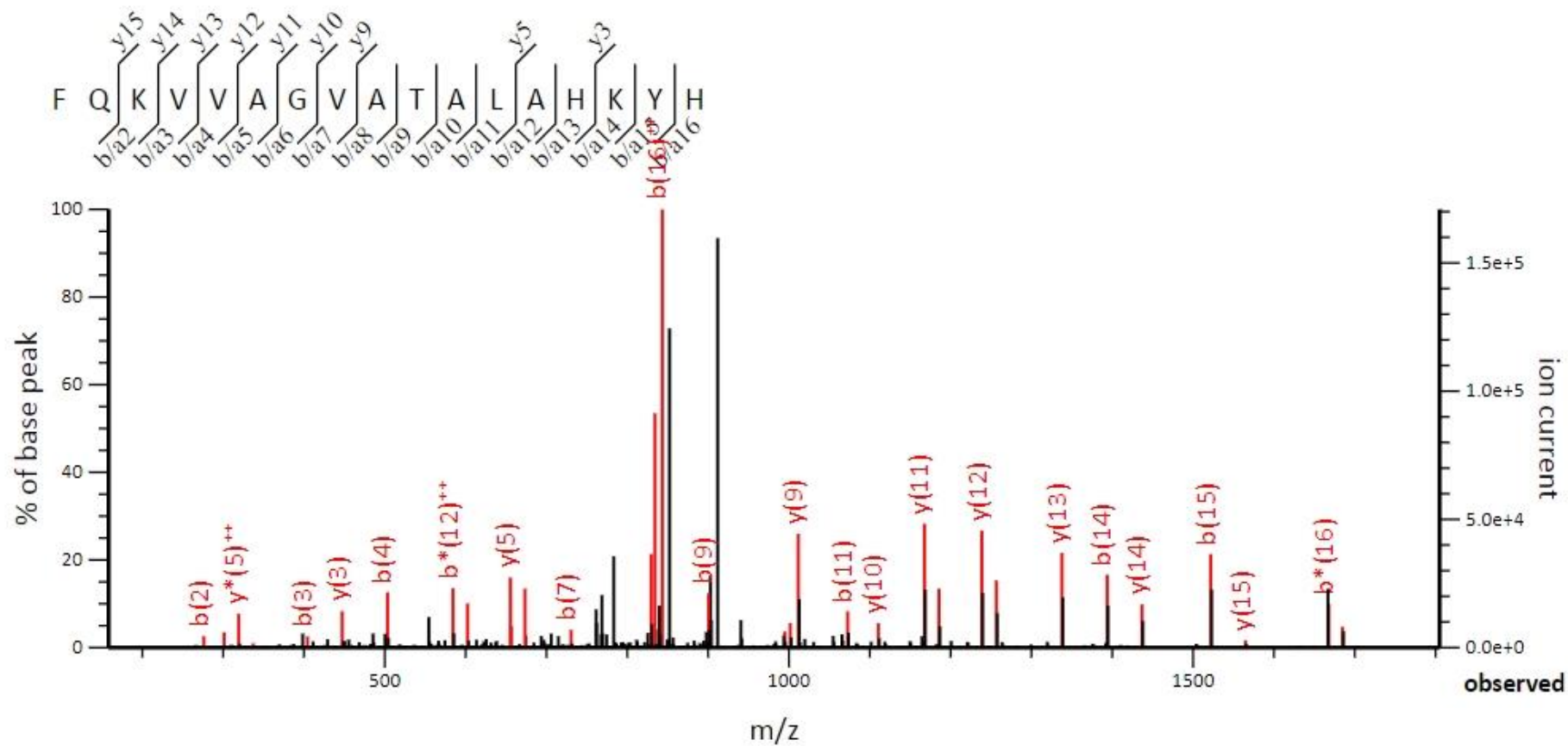


Figure S20: Deconvolution of the main peptide from the fraction B7 (eluted at 93.7 min) corresponding to the fragment 123-147 of hemoglobin $\beta 2$ chain.

