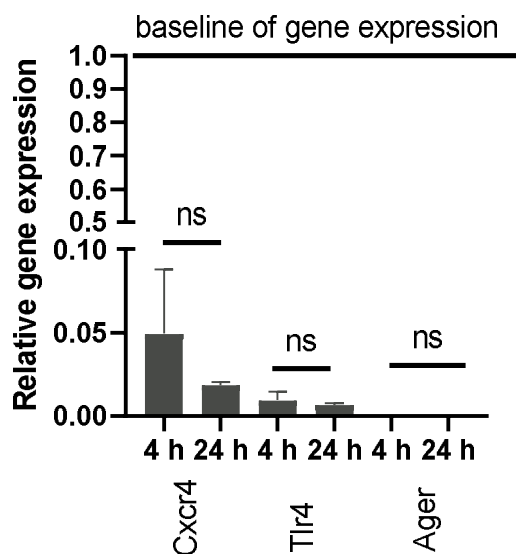
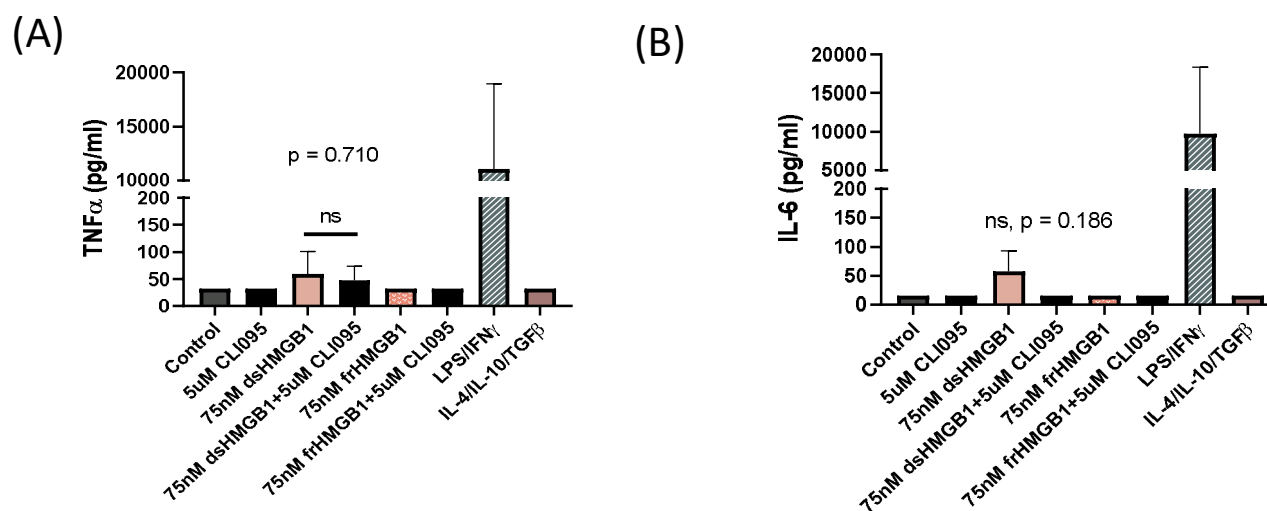


Disulphide and fully reduced HMGB1 induce different macrophage polarization and migration patterns**Supplementary Table S1.** P-values of ANOVA and Dunnett's T3 multiple comparisons test

Gene	Comparison	95% confidence interval	Adjusted p-value
Il6	4 h IL-4/IL-10/TGF β vs. 4 h dsHMGB1	-9,976 to 1,096	0,0385
	7 h IL-4/IL-10/TGF β vs. 7 h dsHMGB1	-19,49 to -4,076	0,0074
	24 h IL-4/IL-10/TGF β vs. 24 h dsHMGB1	-9,597 to 1,046	0,0527
Tnf	4 h IL-4/IL-10/TGF β vs. 4 h dsHMGB1	-11,84 to -4,852	0,0020
	7 h IL-4/IL-10/TGF β vs. 7 h dsHMGB1	-13,66 to -0,4393	0,0220
	24 h IL-4/IL-10/TGF β vs. 24 h dsHMGB1	-7,914 to 1,753	0,0843
Il10	4 h IL-4/IL-10/TGF β vs. 4 h dsHMGB1	-6,886 to 7,987	0,9920
	7 h IL-4/IL-10/TGF β vs. 7 h dsHMGB1	-12,65 to 9,101	0,5523
	24 h IL-4/IL-10/TGF β vs. 24 h dsHMGB1	-8,277 to 6,249	0,6472
Arg1	4 h IL-4/IL-10/TGF β vs. 4 h dsHMGB1	5,546 to 15,62	0,0016
	7 h IL-4/IL-10/TGF β vs. 7 h dsHMGB1	0,004570 to 30,35	0,0250
	24 h IL-4/IL-10/TGF β vs. 24 h dsHMGB1	17,40 to 22,47	<0,0001
Nos2	4 h IL-4/IL-10/TGF β vs. 4 h dsHMGB1	-22,69 to 8,666	0,1973
	7 h IL-4/IL-10/TGF β vs. 7 h dsHMGB1	-17,84 to -6,295	0,0016
	24 h IL-4/IL-10/TGF β vs. 24 h dsHMGB1	-15,65 to -4,793	0,0040



Supplementary Figure 1. Relative gene expression of Cxcr4, Tlr4 and Ager in unstimulated BMDMs. Relative gene expression was calculated by normalizing the gene of interest to expression of reference gene B2m.



Supplementary Figure 2. Release of (A) TNFα and (B) IL-6 in response to dsHMGB1, frHMGB1, LPS/IFNγ and IL-4/IL-10/TGFβ stimulation for 24 h with and without CLI095.