

Supplementary Materials

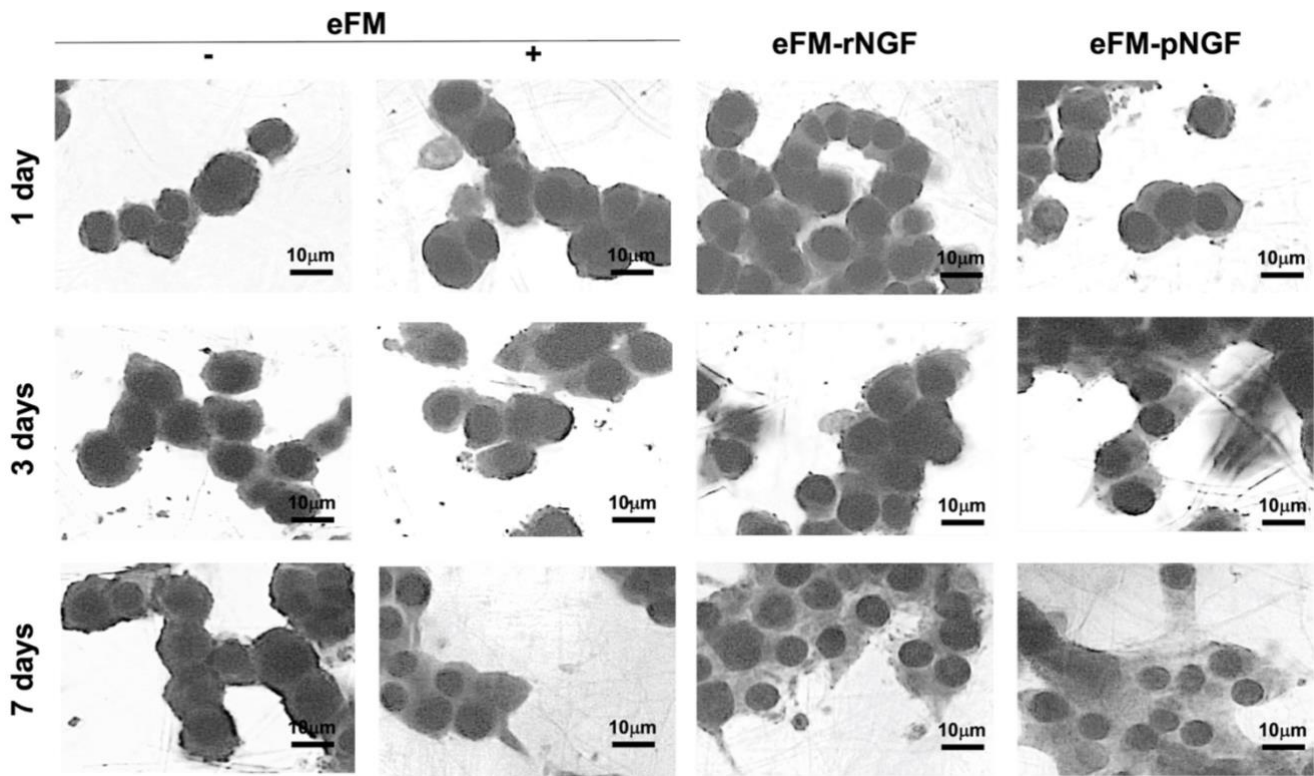


Figure S1. Neurite-bearing PC12 cells.

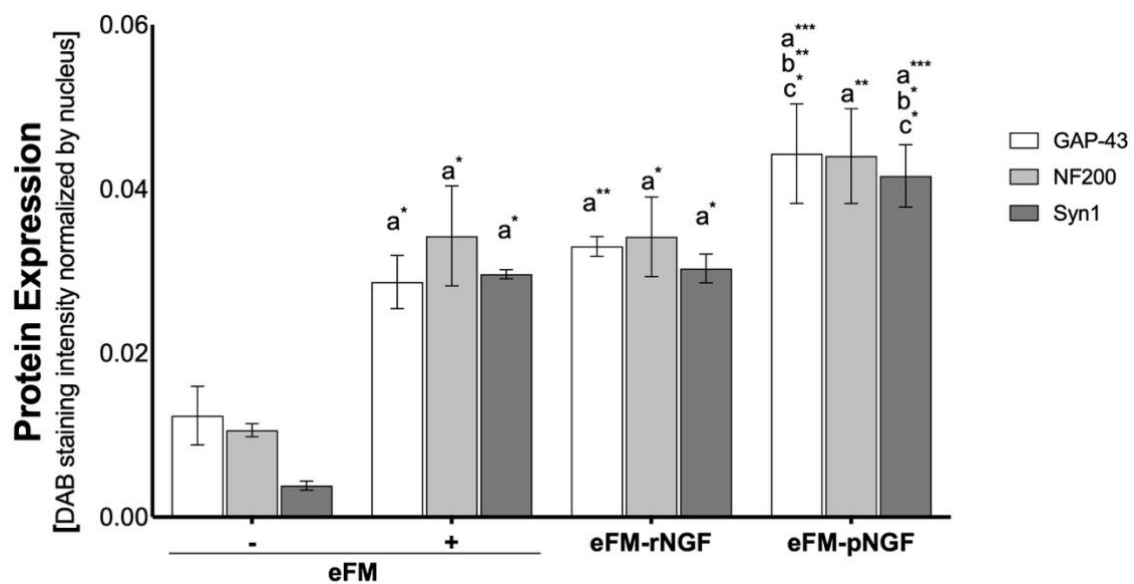


Figure S2. Protein expression, namely GAP-43, NF200 and Syn1 represented by DAB staining intensity normalized by nucleus from color deconvolution analysis. The one-way ANOVA with the Fisher's post hoc test were applied ($p < 0.01$): a represents significant differences compared to eFM-; b represents significant differences compared to eFM+, and c represents significant differences compared to eFM-rNGF; * $p < 0.01$; ** $p < 0.001$; *** $p < 0.0001$;