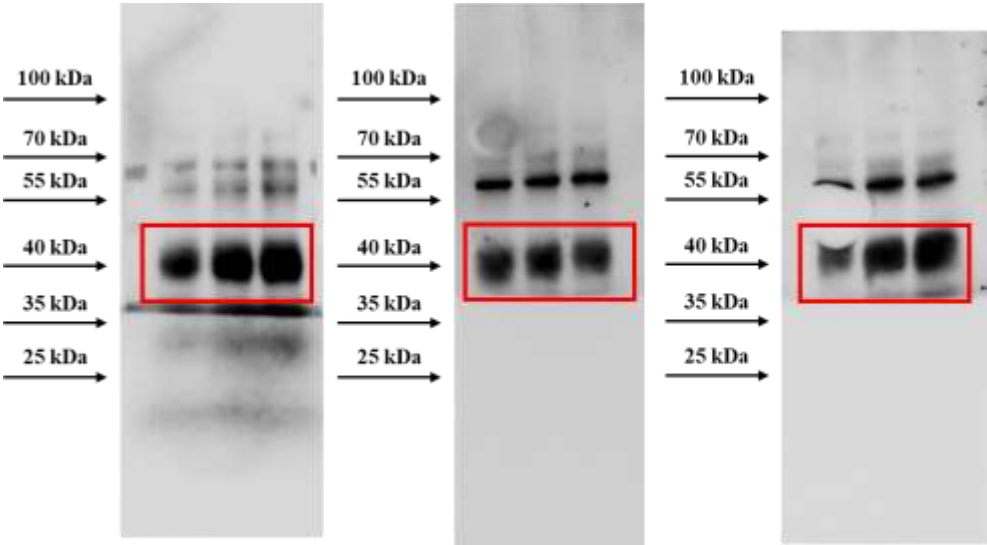
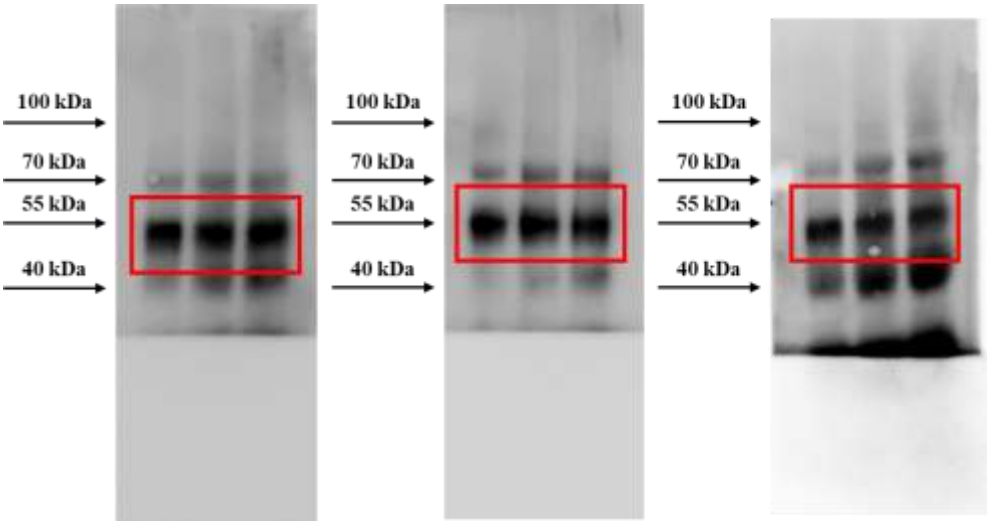


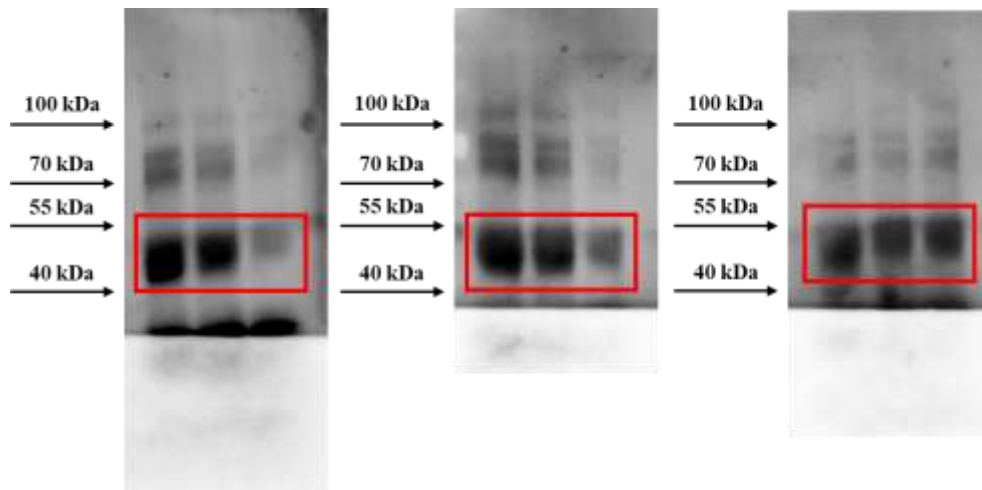
# Supplementary Figures



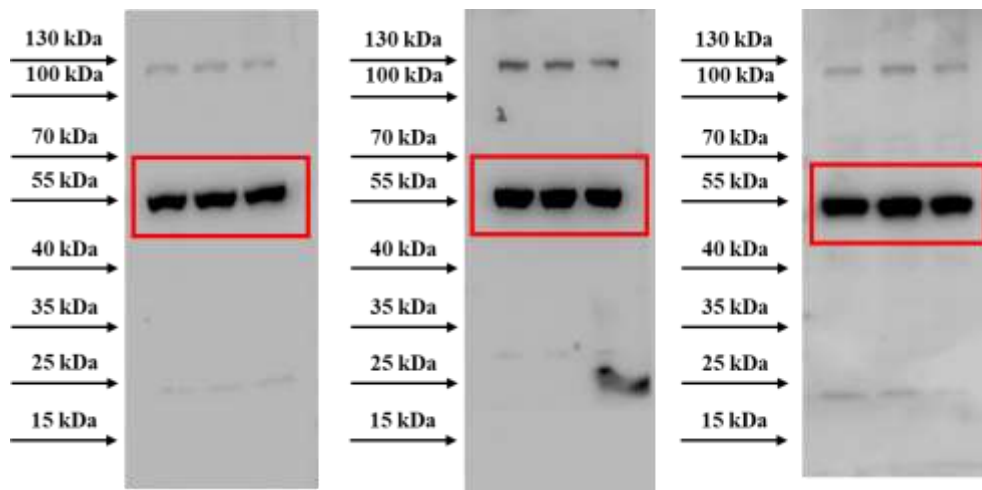
**Figure S1.** Original western blots for EP2 obtained from clot homogenates in all experimental conditions run each with n = 7 mice per group pooled.



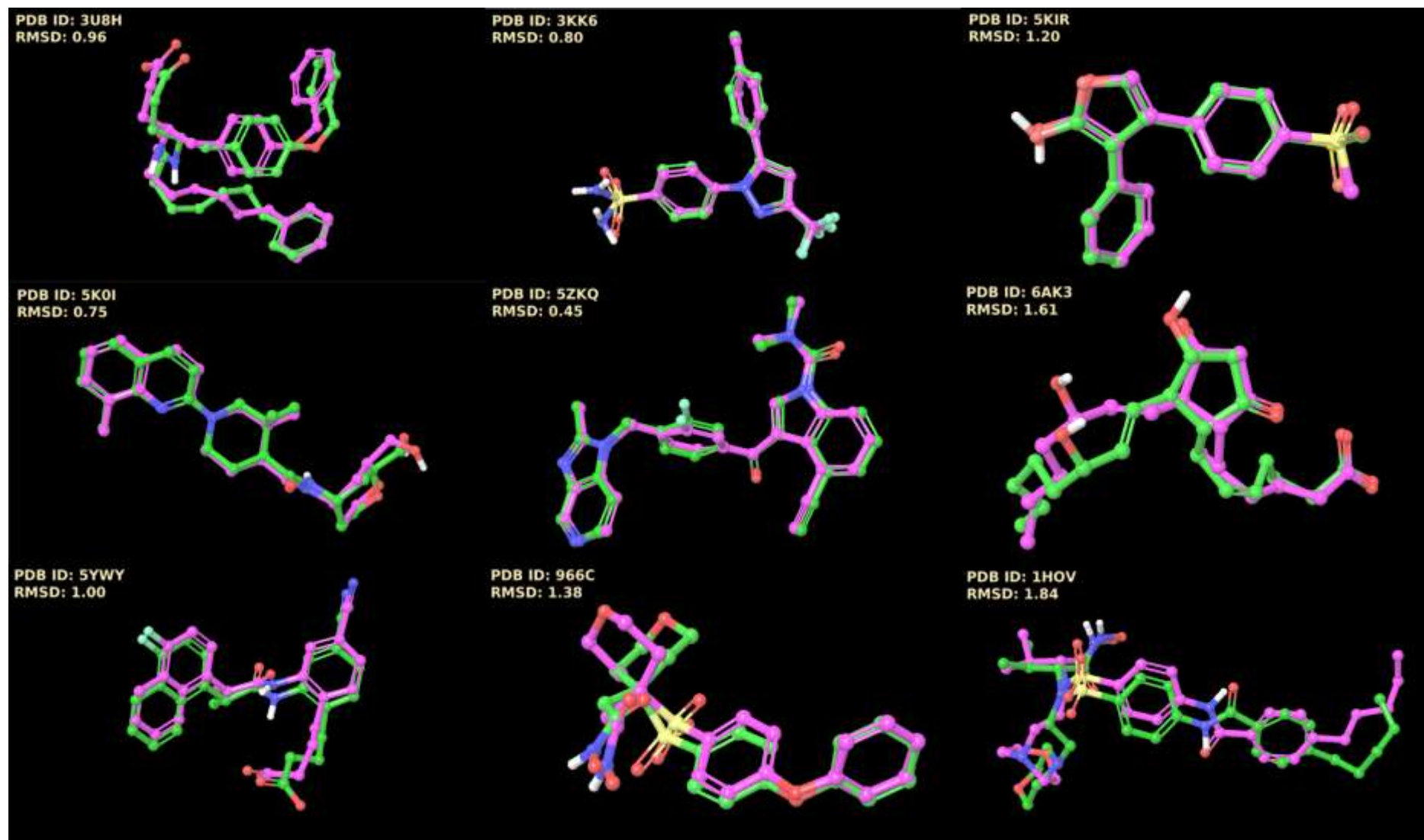
**Figure S2.** Original western blots for EP4 obtained from clot homogenates in all experimental conditions run each with n = 7 mice per group pooled.



**Figure S3.** Original western blots for EP3 obtained from clot homogenates in all experimental conditions run each with  $n = 7$  mice per group pooled.



**Figure S4.** Original western blots for tubulin obtained from clot homogenates in all experimental conditions run each with  $n = 7$  mice per group pooled.



**Figure S5.** RMSD values of the redocking experiments of sPLA<sub>2</sub> (3UH8), COX-1 (3KK6), COX-2 (5KIR), mPGES-1 (5K0I), PAFR (5ZKQ), EP3 (6AK3), EP4 (5YWY), MMP1 (996C), and MMP2 (1HOV).

## Ballesteros–Weinstein numbering scheme

*PAFR*

Residue Number	B-W Numbering
14	1.31
15	1.32
16	1.33
17	1.34
18	1.35
19	1.36
20	1.37
21	1.38
22	1.39
23	1.4
24	1.41
25	1.42
26	1.43
27	1.44
28	1.45
29	1.46
30	1.47
31	1.48
32	1.49
33	1.5
34	1.51
35	1.52
36	1.53
37	1.54
38	1.55

39	1.56
40	1.57
41	1.58
42	1.59
54	2.42
55	2.43
56	2.44
57	2.45
58	2.46
59	2.47
60	2.48
61	2.49
62	2.5
63	2.51
64	2.52
65	2.53
66	2.54
67	2.55
68	2.56
69	2.57
70	2.58
71	2.59
72	2.6
73	2.61
74	2.62
75	2.63
76	2.64

77	2.65
78	2.66
79	2.67
86	3.21
87	3.22
88	3.23
89	3.24
90	3.25
91	3.26
92	3.27
93	3.28
94	3.29
95	3.3
96	3.31
97	3.32
98	3.33
99	3.34
100	3.35
101	3.36
102	3.37
103	3.38
104	3.39
105	3.4
106	3.41
107	3.42
108	3.43
109	3.44

110	3.45
111	3.46
112	3.47
113	3.48
114	3.49
115	3.5
116	3.51
117	3.52
118	3.53
119	3.54
131	4.39
132	4.4
133	4.41
134	4.42
135	4.43
136	4.44
137	4.45
138	4.46
139	4.47
140	4.48
141	4.49
142	4.5
143	4.51
144	4.52
145	4.53
146	4.54
147	4.55

148	4.56
149	4.57
183	5.35
184	5.36
185	5.37
186	5.38
187	5.39
188	5.4
189	5.41
190	5.42
191	5.43
192	5.44
193	5.45
194	5.46
195	5.47
196	5.48
197	5.49
198	5.5
199	5.51
200	5.52
201	5.53

202	5.54
203	5.55
204	5.56
205	5.57
206	5.58
207	5.59
208	5.6
227	6.29
228	6.3
229	6.31
230	6.32
231	6.33
232	6.34
233	6.35
234	6.36
235	6.37
236	6.38
237	6.39
238	6.4
239	6.41
240	6.42

241	6.43
242	6.44
243	6.45
244	6.46
245	6.47
246	6.48
247	6.49
248	6.5
249	6.51
250	6.52
251	6.53
252	6.54
253	6.55
254	6.56
255	6.57
256	6.58
257	6.59
258	6.6
276	7.36
277	7.37
278	7.38

279	7.39
280	7.4
281	7.41
282	7.42
283	7.43
284	7.44
285	7.45
286	7.46
287	7.47
288	7.48
289	7.49
290	7.5
291	7.51
292	7.52
293	7.53
294	7.54
295	7.55
296	7.56

### ***EP3***

Residue number	B-W Numbering
47	1.31
48	1.32
49	1.33
50	1.34

51	1.35
52	1.36
53	1.37
54	1.38
55	1.39
56	1.4

57	1.41
58	1.42
59	1.43
60	1.44
61	1.45
62	1.46

63	1.47
64	1.48
65	1.49
66	1.5
67	1.51
68	1.52

69	1.53
70	1.54
71	1.55
72	1.56
73	1.57
74	1.58
75	1.59
91	2.42
92	2.43
93	2.44
94	2.45
95	2.46
96	2.47
97	2.48
98	2.49
99	2.5
100	2.51
101	2.52
102	2.53
103	2.54
104	2.55
105	2.56
106	2.57
107	2.58
108	2.59
109	2.6
110	2.61
111	2.62
112	2.63
113	2.64

114	2.65
115	2.66
116	2.67
126	3.21
127	3.22
128	3.23
129	3.24
130	3.25
131	3.26
132	3.27
133	3.28
134	3.29
135	3.3
136	3.31
137	3.32
138	3.33
139	3.34
140	3.35
141	3.36
142	3.37
143	3.38
144	3.39
145	3.4
146	3.41
147	3.42
148	3.43
149	3.44
150	3.45
151	3.46
152	3.47

153	3.48
154	3.49
155	3.5
156	3.51
157	3.52
158	3.53
159	3.54
171	4.39
172	4.4
173	4.41
174	4.42
175	4.43
176	4.44
177	4.45
178	4.46
179	4.47
180	4.48
181	4.49
182	4.5
183	4.51
184	4.52
185	4.53
186	4.54
187	4.55
188	4.56
189	4.57
226	5.35
227	5.36
228	5.37
229	5.38

230	5.39
231	5.4
232	5.41
233	5.42
234	5.43
235	5.44
236	5.45
237	5.46
238	5.47
239	5.48
240	5.49
241	5.5
242	5.51
243	5.52
244	5.53
245	5.54
246	5.55
247	5.56
248	5.57
249	5.58
250	5.59
251	5.6
276	6.29
277	6.3
278	6.31
279	6.32
280	6.33
281	6.34
282	6.35
283	6.36

284	6.37
285	6.38
286	6.39
287	6.4
288	6.41
289	6.42
290	6.43
291	6.44
292	6.45
293	6.46
294	6.47
295	6.48

296	6.49
297	6.5
298	6.51
299	6.52
300	6.53
301	6.54
302	6.55
303	6.56
304	6.57
305	6.58
306	6.59
307	6.6

329	7.36
330	7.37
331	7.38
332	7.39
333	7.4
334	7.41
335	7.42
336	7.43
337	7.44
338	7.45
339	7.46
340	7.47

341	7.48
342	7.49
343	7.5
344	7.51
345	7.52
346	7.53
347	7.54
348	7.55
349	7.56

#### ***EP4***

Residue number	B-W Numbering
57	2.42
58	2.43
59	2.44
60	2.45
61	2.46
62	2.47
63	2.48
64	2.49
65	2.5
66	2.51
67	2.52
68	2.53
69	2.54

70	2.55
71	2.56
72	2.57
73	2.58
74	2.59
75	2.6
76	2.61
77	2.62
78	2.63
79	2.64
80	2.65
81	2.66
82	2.67
88	3.21
89	3.22

90	3.23
91	3.24
92	3.25
93	3.26
94	3.27
95	3.28
96	3.29
97	3.3
98	3.31
99	3.32
100	3.33
101	3.34
102	3.35
103	3.36
104	3.37

105	3.38
106	3.39
107	3.4
108	3.41
109	3.42
110	3.43
111	3.44
112	3.45
113	3.46
114	3.47
115	3.48
116	3.49
117	3.5
118	3.51
119	3.52

120	3.53
121	3.54
133	4.39
134	4.4
135	4.41
136	4.42
137	4.43
138	4.44
139	4.45
140	4.46
141	4.47
142	4.48
143	4.49
144	4.5
145	4.51
146	4.52
147	4.53
148	4.54
149	4.55
150	4.56
151	4.57
181	5.35
182	5.36
183	5.37
184	5.38
185	5.39
186	5.4
187	5.41
188	5.42
189	5.43

190	5.44
191	5.45
192	5.46
193	5.47
194	5.48
195	5.49
196	5.5
197	5.51
198	5.52
199	5.53
200	5.54
201	5.55
202	5.56
203	5.57
204	5.58
205	5.59
206	5.6
266	6.29
267	6.3
268	6.31
269	6.32
270	6.33
271	6.34
272	6.35
273	6.36
274	6.37
275	6.38
276	6.39
277	6.4
278	6.41

279	6.42
280	6.43
281	6.44
282	6.45
283	6.46
284	6.47
285	6.48
286	6.49
287	6.5
288	6.51
289	6.52
290	6.53
291	6.54
292	6.55
293	6.56
294	6.57
295	6.58
296	6.59
297	6.6
312	7.36
313	7.37
314	7.38
315	7.39
316	7.4
317	7.41
318	7.42
319	7.43
320	7.44
321	7.45
322	7.46

323	7.47
324	7.48
325	7.49
326	7.5
327	7.51
328	7.52
329	7.53
330	7.54
331	7.55
332	7.56