

Figure S1. HPLC, SDS PAGE and ESI mass of S100A1.

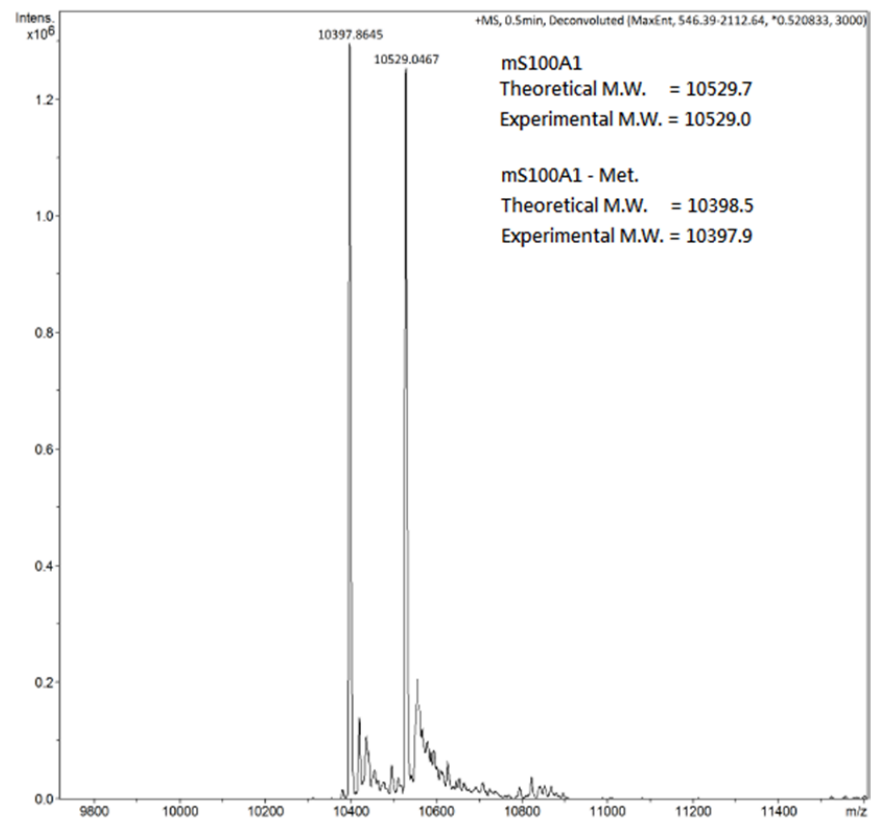
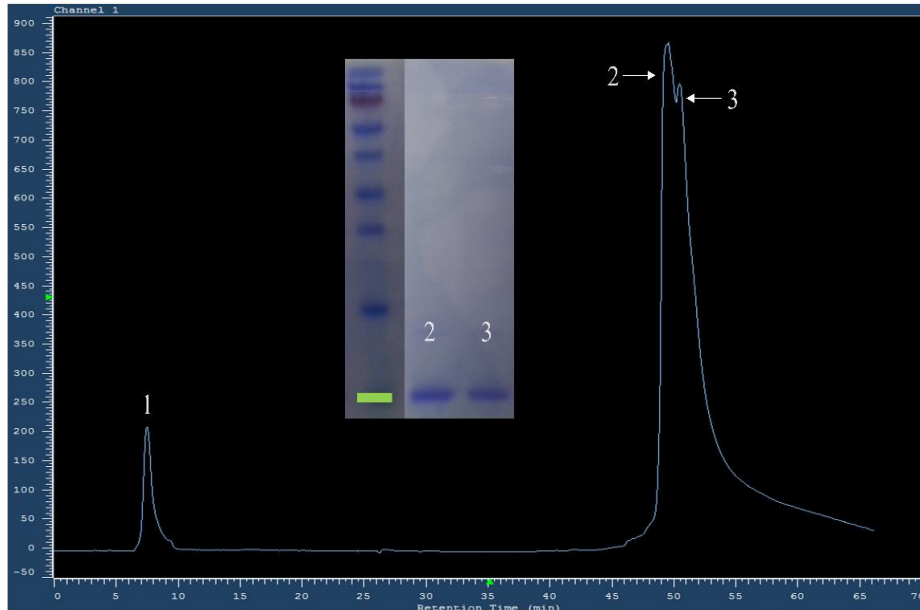
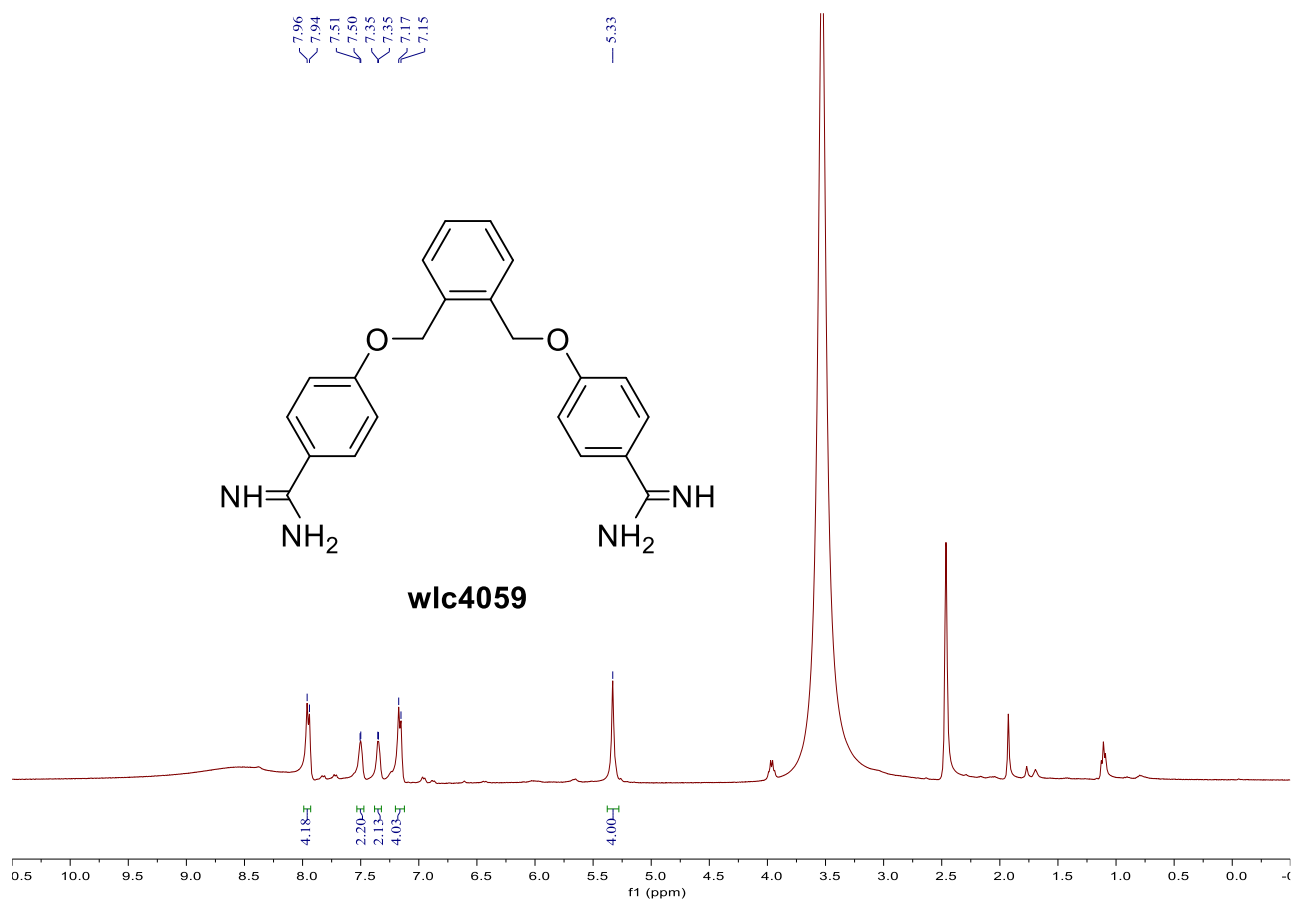
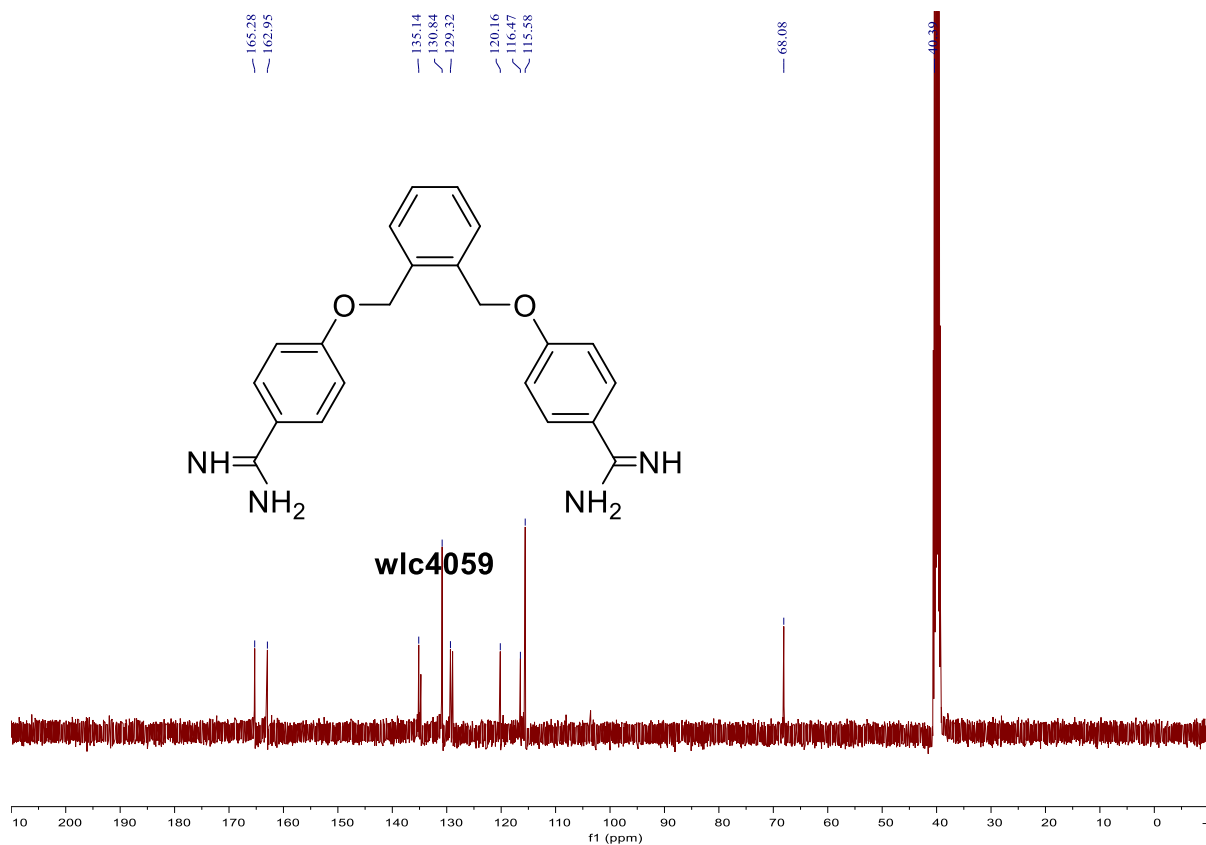


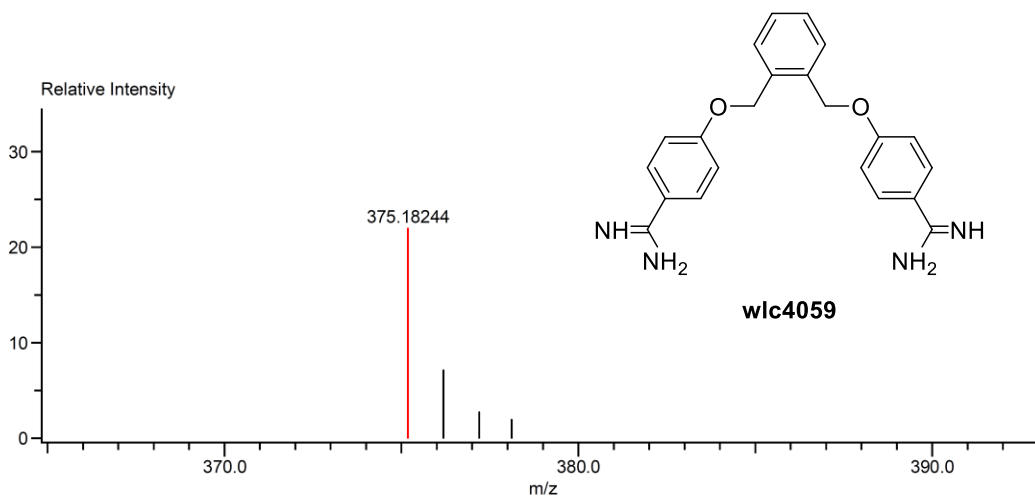
Figure S2: NMR data of the pentamidine derivative WLC-4059.



^1H NMR (400 MHz, $\text{DMSO}-d_6$) spectrum of **wlc4059**



^{13}C NMR (400 MHz, $\text{DMSO}-d_6$) spectrum of **wlc4059**



HRMS of compound **wlc4059**

Figure S3. The clinical corelation of RAGE in patients with colorectal cancer

