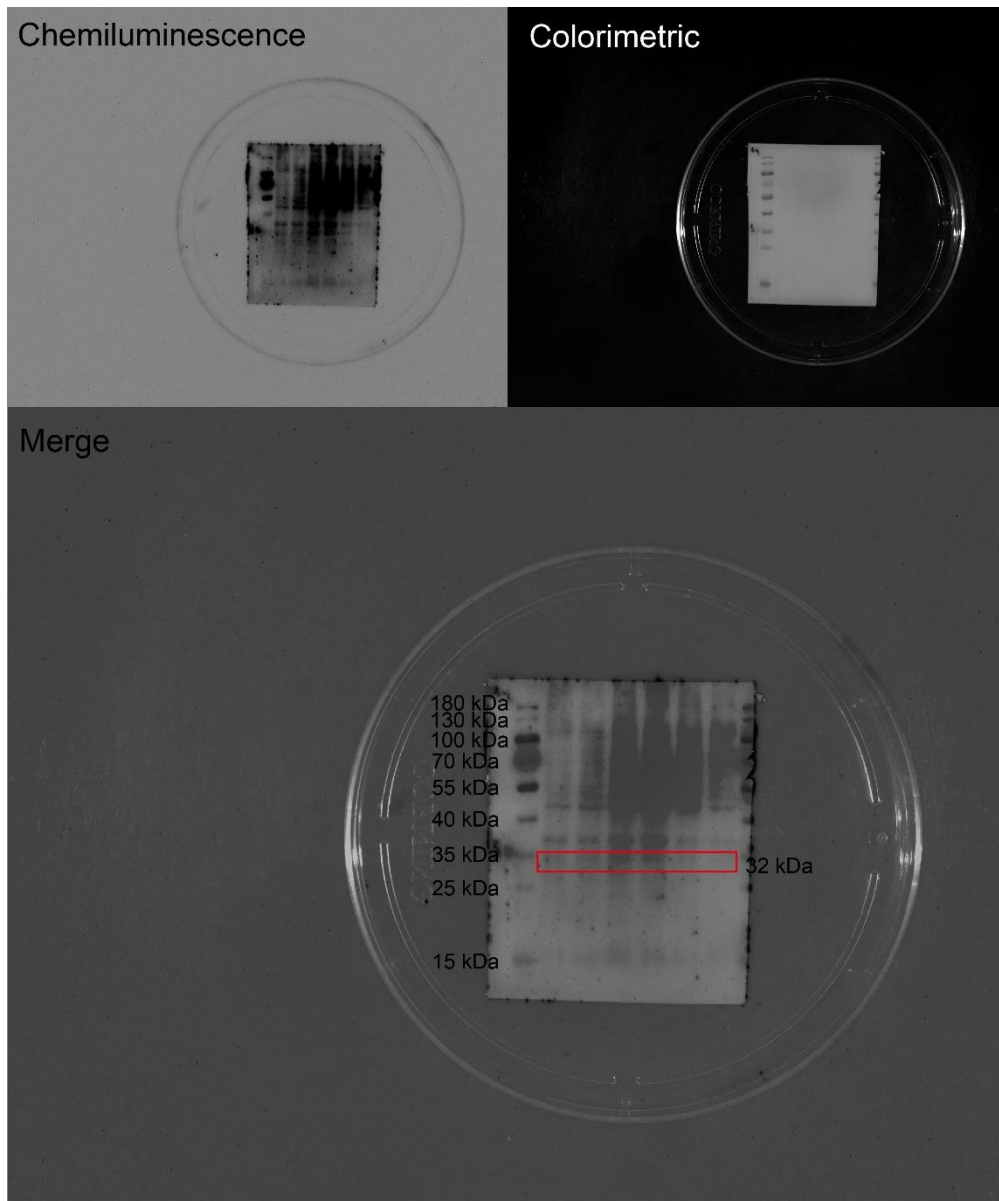


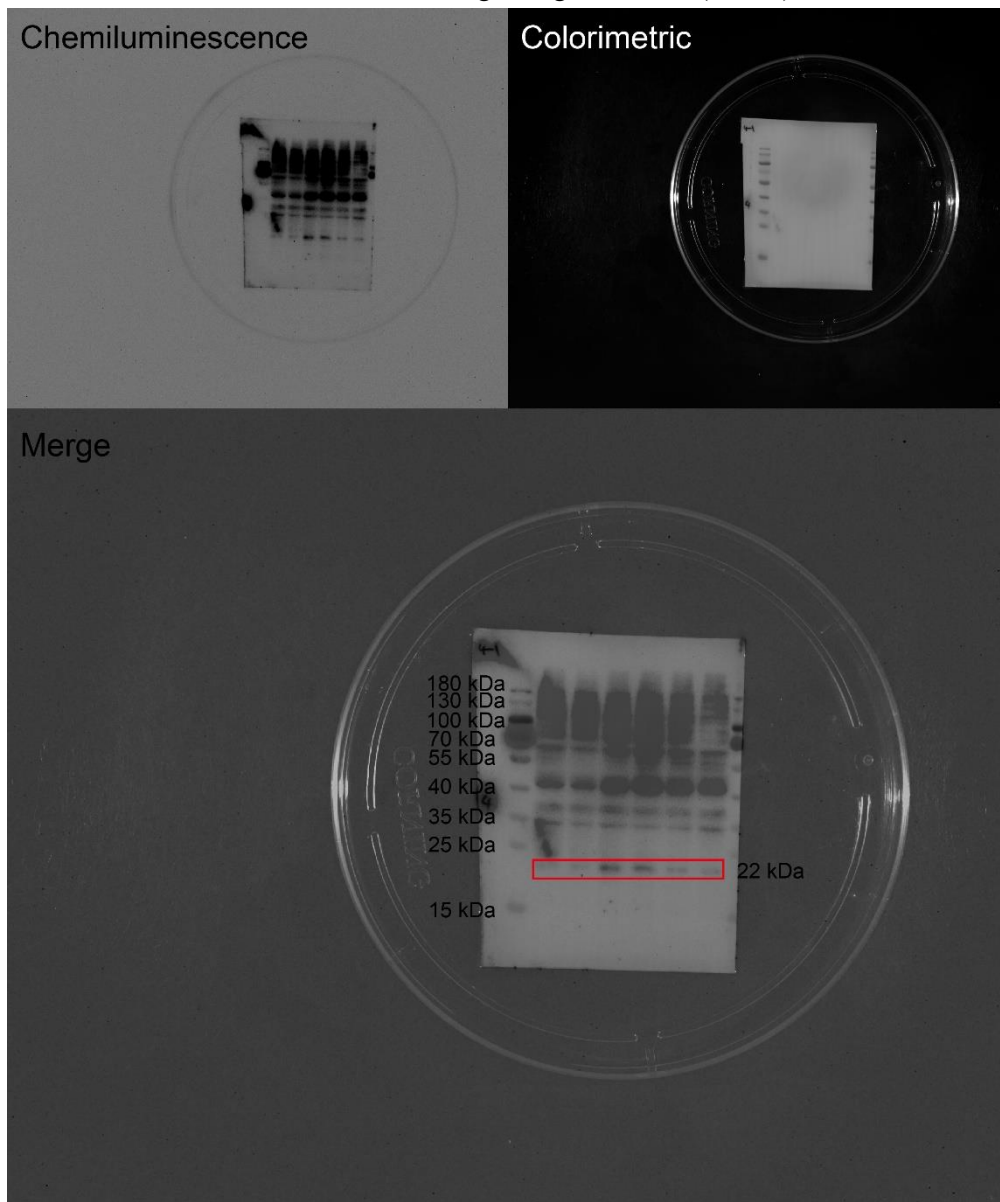
## WB raw images with labels

**Figure 6i**

1. Chemiluminescence, colorimetric and merge images of IL-1 $\beta$  (32kDa)



2. Chemiluminescence, colorimetric and merge images of IL-18 (22kDa)



3. Chemiluminescence, colorimetric and merge images of  $\beta$ -actin (45kDa)

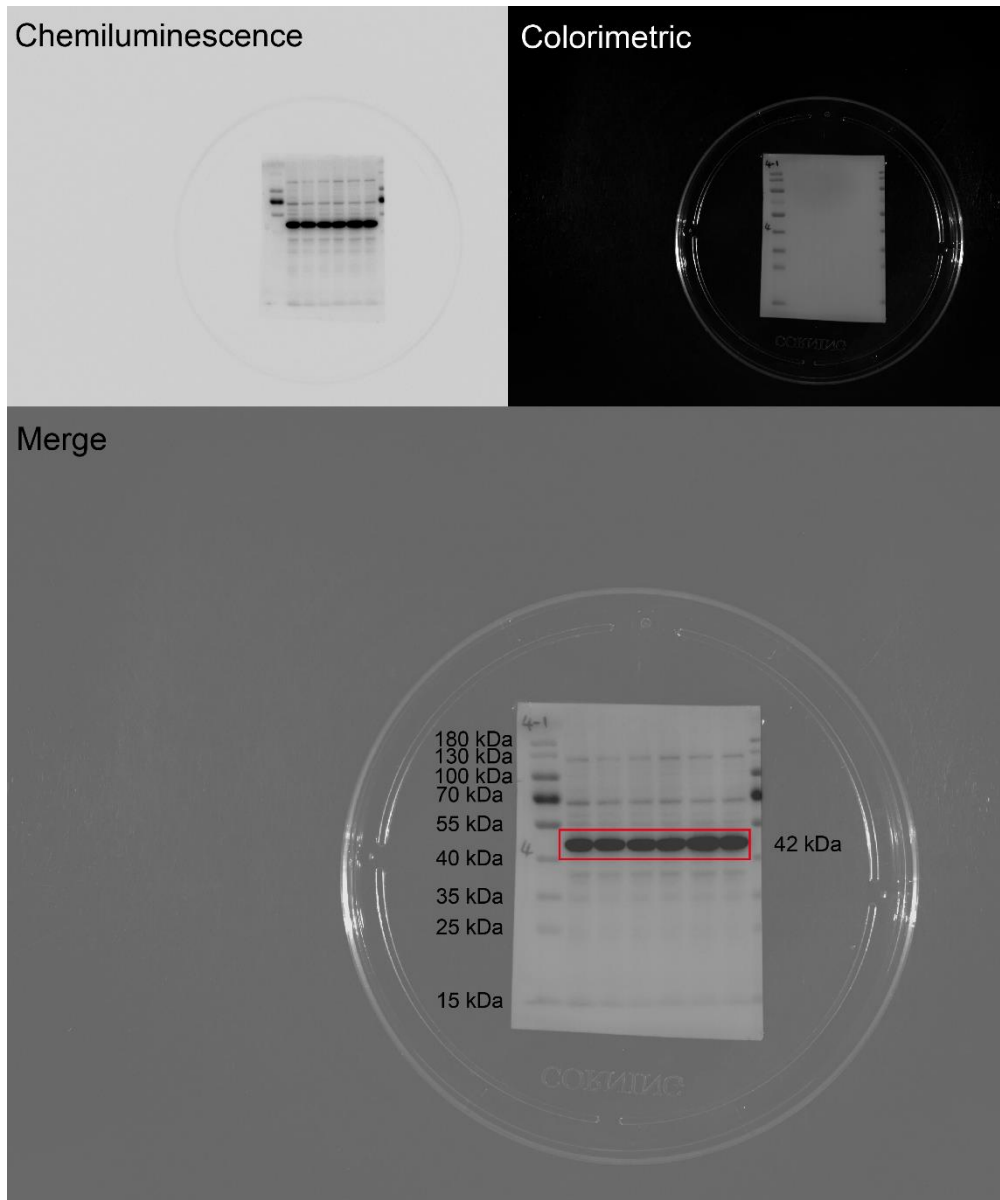
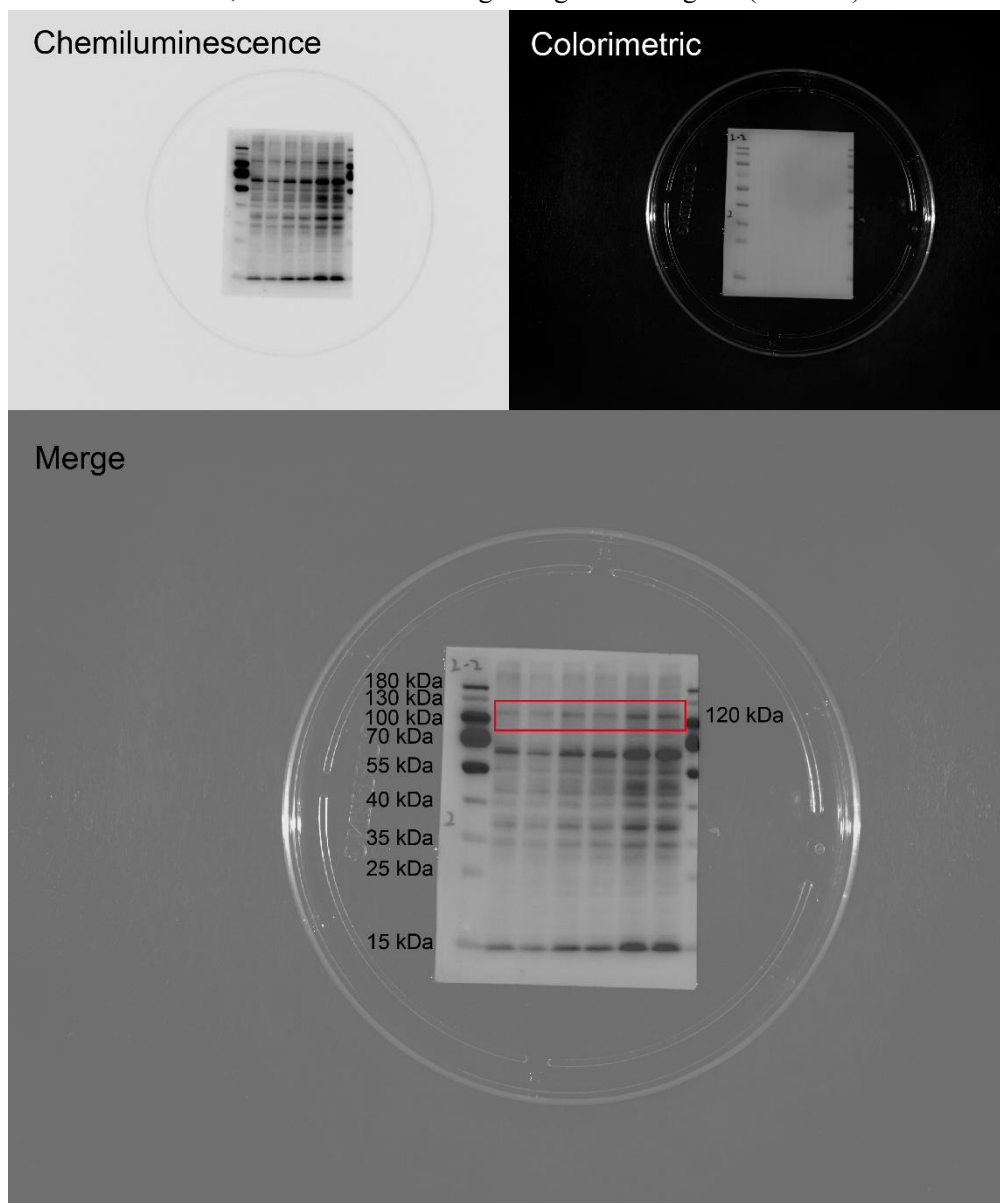
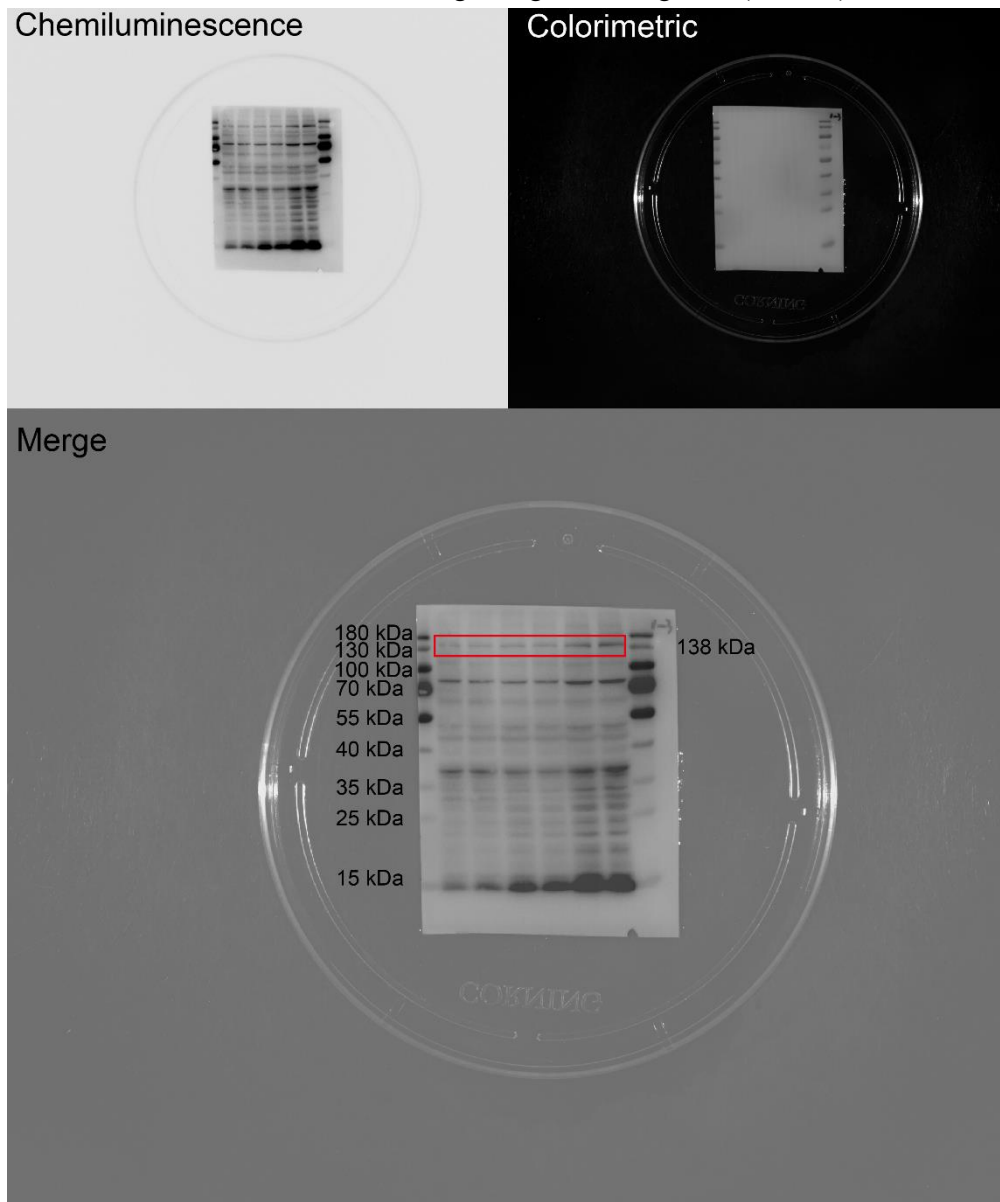


Figure 6k

1. Chemiluminescence, colorimetric and merge images of collagen I (120 kDa)



2. Chemiluminescence, colorimetric and merge images of collagen III (138kDa)

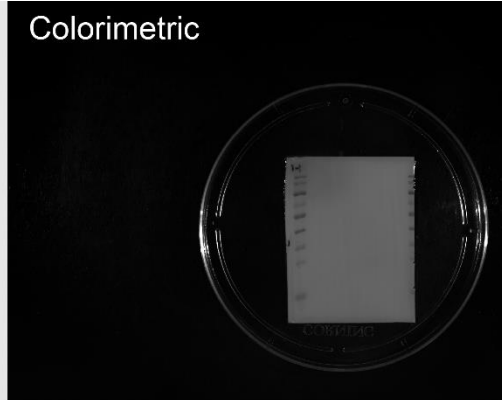


3. Chemiluminescence, colorimetric and merge images of  $\beta$ -actin (45kDa)

Chemiluminescence



Colorimetric



Merge

