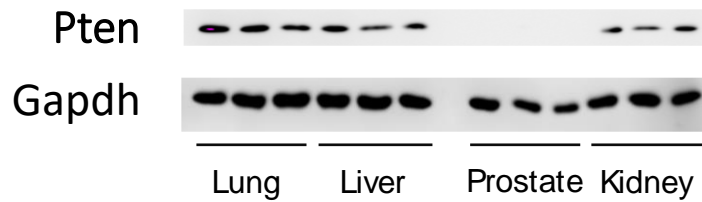


## Supplementary Figures:

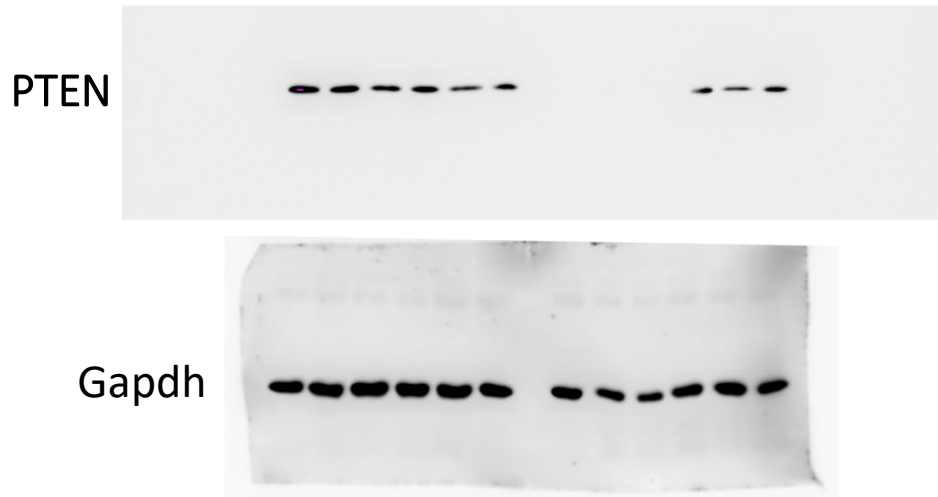
1.



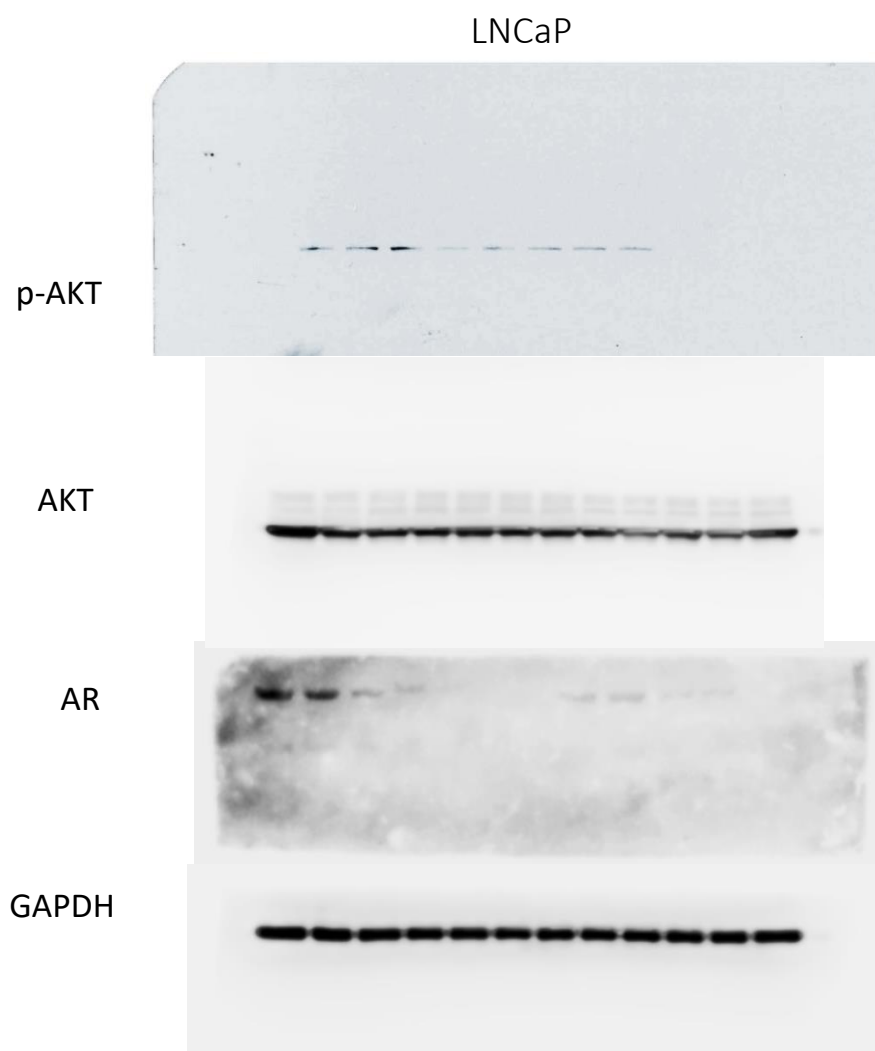
**Figure S1.** Western blot analysis of PTEN protein expression in prostate-specific PTEN knockout mice. Three mice were randomly selected and tissue samples, including lung, liver, prostate, and kidney from each of the mice analyzed for PTEN expression. PTEN was detected in the lung, liver, and kidney tissues, while not detectable in the prostate. Gapdh was used as loading control.

**Original images for Western blot results:**

**1. Original images for blots in Supplementary Figure S1:**

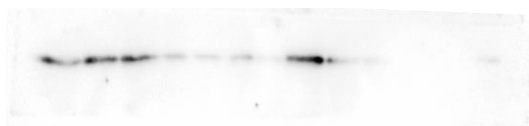


## 2. Original Images for Blots in Figure 2.

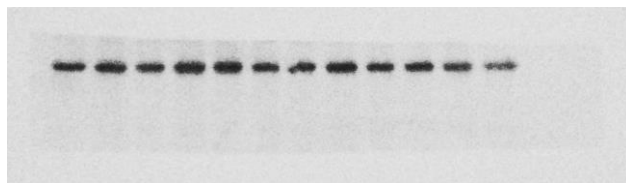


WPE1-NA22

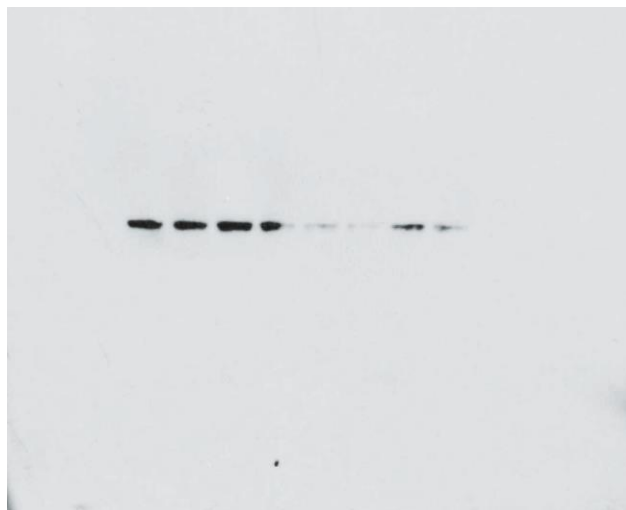
p-AKT



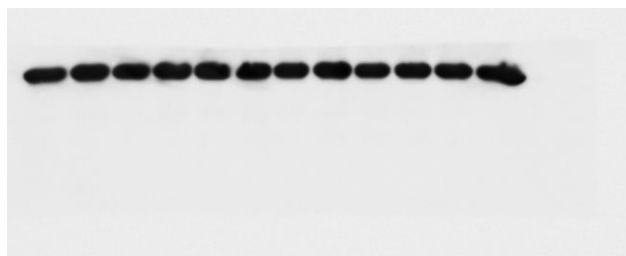
AKT



AR

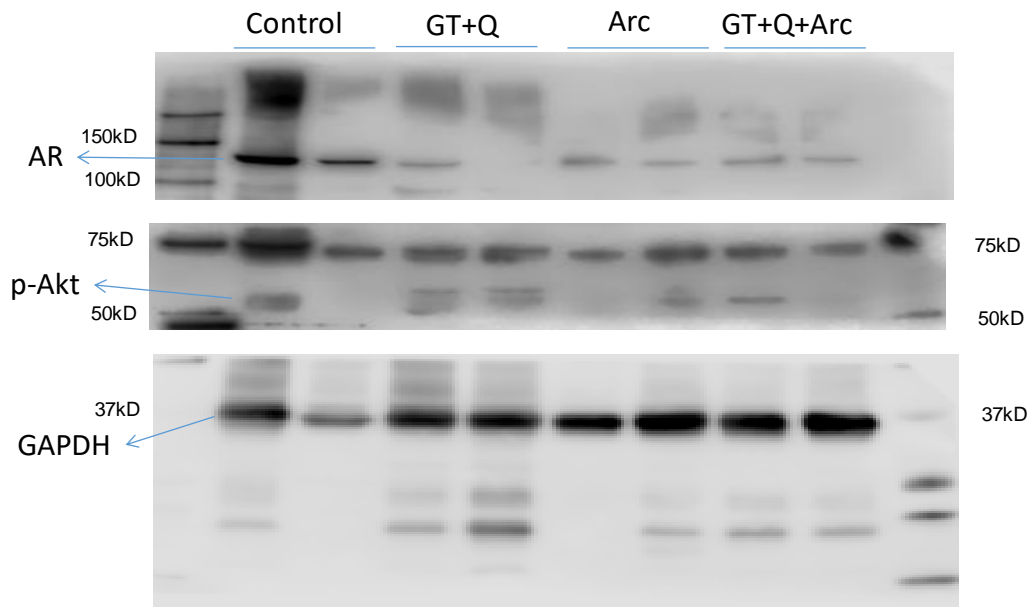


GAPDH

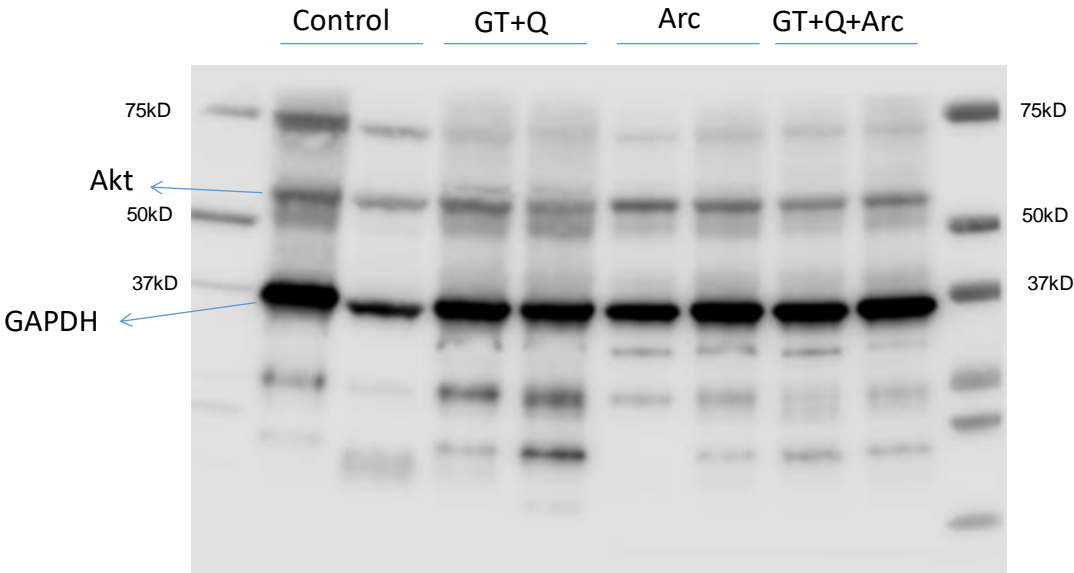


3. Original Images for Blots in Figure 5.

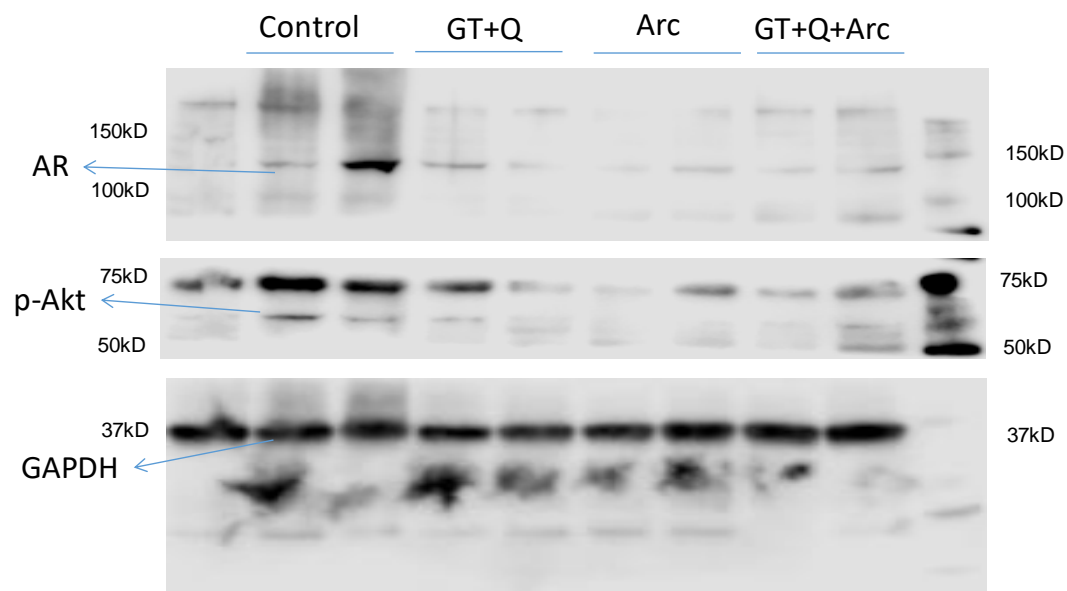
Gel-1



Gel-2



Gel-3



Gel-4

