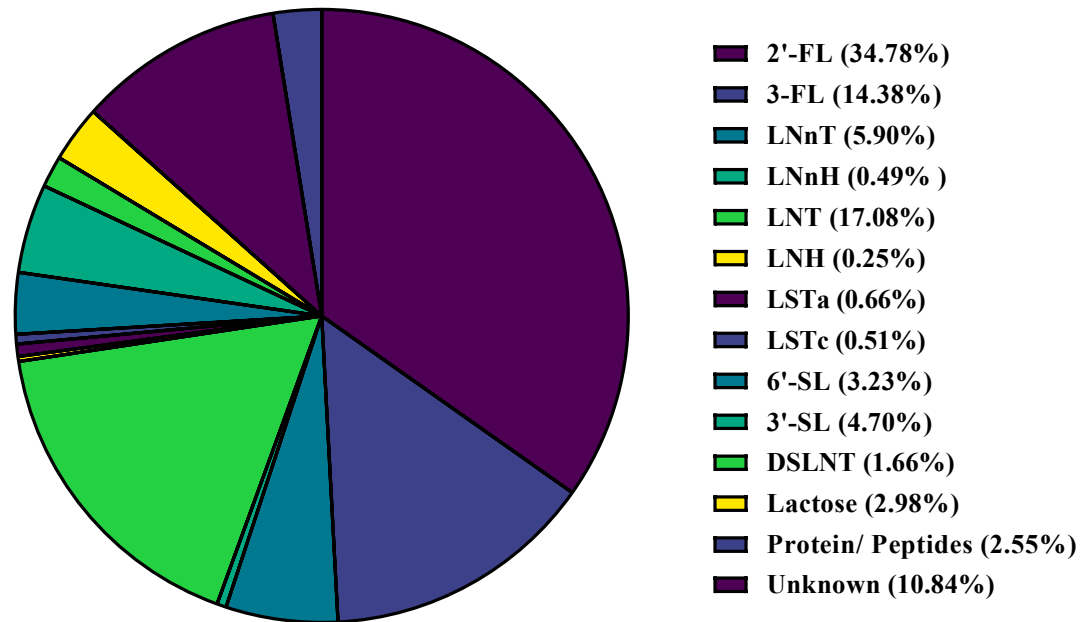


# Supplementary Figure S1



**Figure S1:** Pie chart showing the relative abundance of the major oligosaccharides in breastmilk-derived HMO which were detected via HPAEC-PAD analysis by comparing to the following external HMO standards: lactose, 3-fucosyllactose (3-FL), 2'-fucosyllactose (2'-FL), lacto-N-neotetraose (LNnT), lacto-N-neohexaose (LNnH), lacto-N-tetraose (LNT), lacto-N-hexaose (LNH), sialyllacto-N-tetraose a (LSTa), sialyllacto-N-tetraose a (LSTc), 6'-sialyllactose (6'-SL), 3'-sialyllactose (3'-SL), disialyllacto-N-tetraose (DSLNT). Data represents average concentrations of technical duplicate data from biological triplicate experiments