

Supplementary Materials:

Figure S1. 2D-MGD method diagram describes the plate after sample application (A), first (1D) development (B), 90° rotation, and sequential multi-gradient developments in the second dimension (2D) (D-F).

Figure S2. Chromatograms of TTO fractions 1-6 identified by GC-MS.

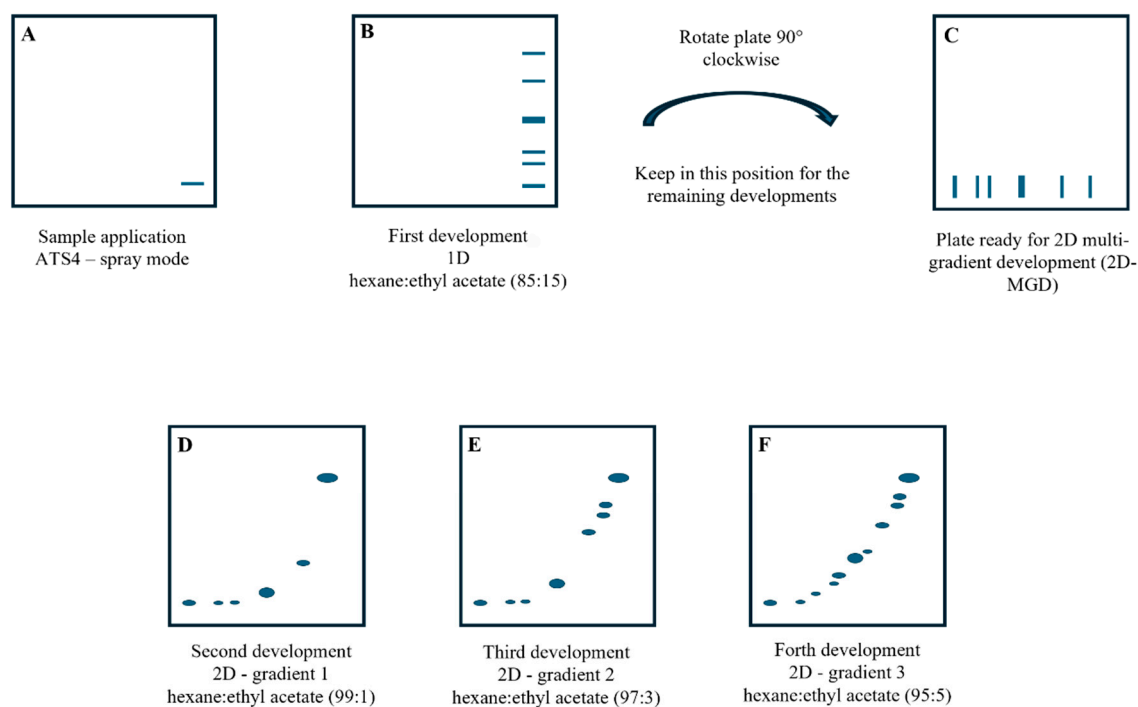


Figure S1. 2D-MGD method diagram describes the plate after sample application (A), first (1D) development (B), 90° plate rotation (C), and sequential multi-gradient developments in the second dimension (2D) (D – F).

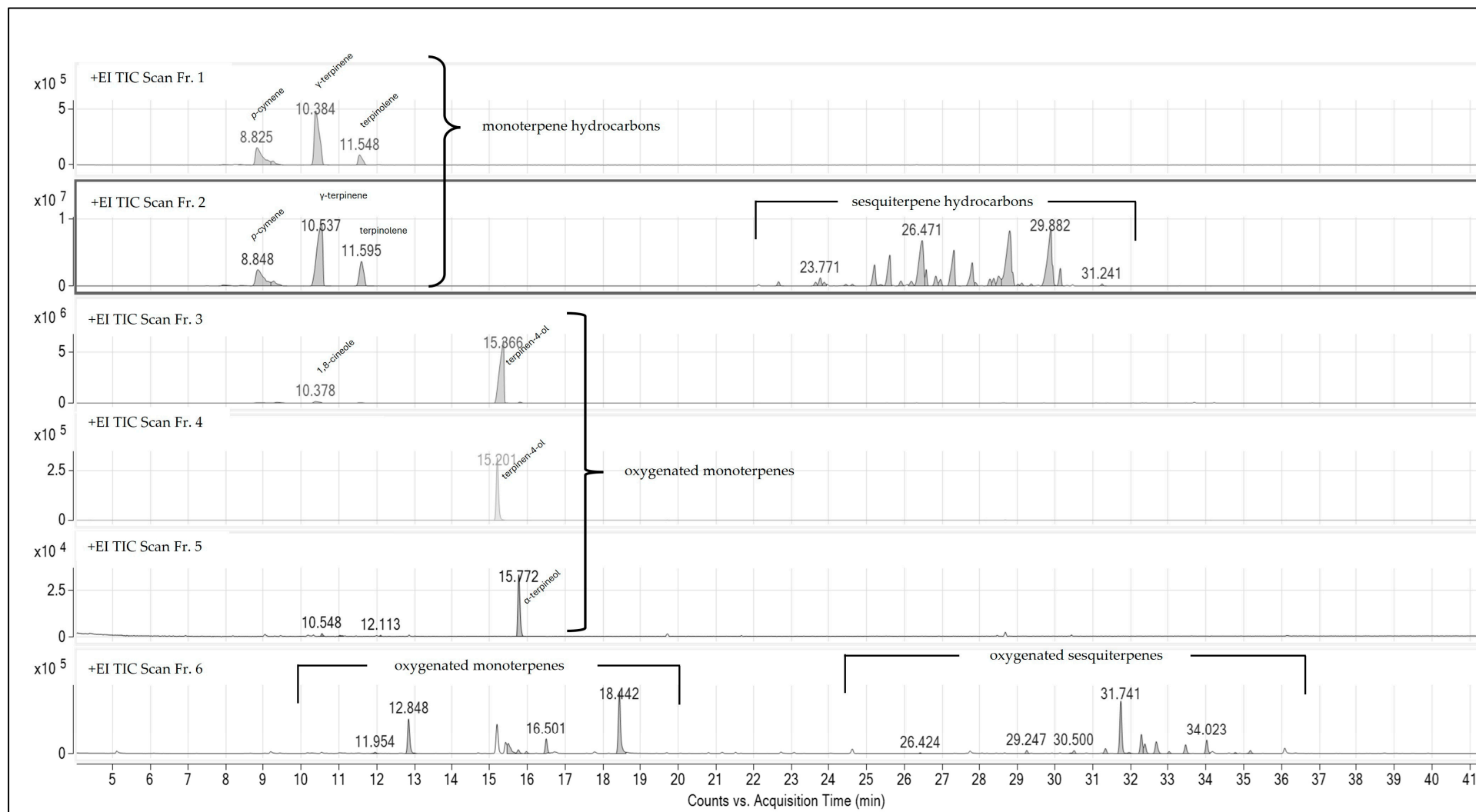


Figure S2: Chromatograms of TTO fractions 1-6 identified by GC-MS.