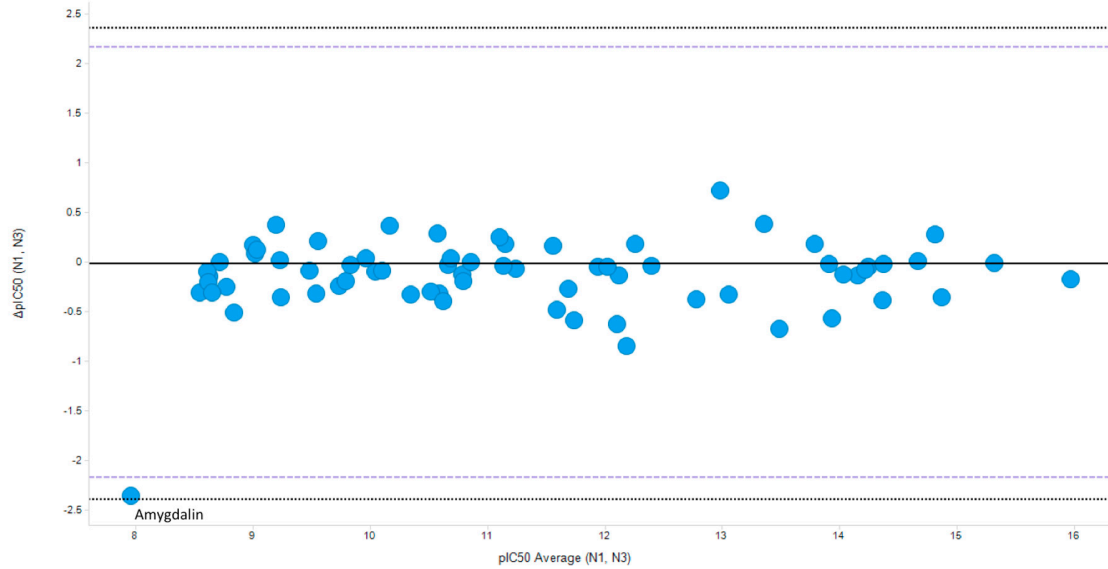


## Supplemental data

*E. coli* ATCC 25922



**Figure S1.** Bland–Altman plots of pairwise comparison of the potencies of the positive compounds determined in different assay runs (N1, N2, and N3) of the secondary screen in each of the tested strains (*E. coli* ATCC 25922, *E. coli* ATCC 86980, *E. coli* ATCC 29181, and *E. coli* AHRCC 81113, respectively).

The continuous reference line in each of the Bland–Altman plots represents average  $pIC_{50}$  bias. Black dotted reference lines represent the 95% confidence interval of the LoA, while shaded purple dotted reference lines indicate the MSD bias interval ( $MSD = 2 \times SD$  of  $pIC_{50}$  differences). Positives marked with numbers outside the 95% confidence interval of the LoA and/or  $\pm MSD$  interval constitute nuisance hits.

LoA: limit of agreement; MSD: minimum significant difference; SD: standard deviation.

*E. coli* ATCC 25922

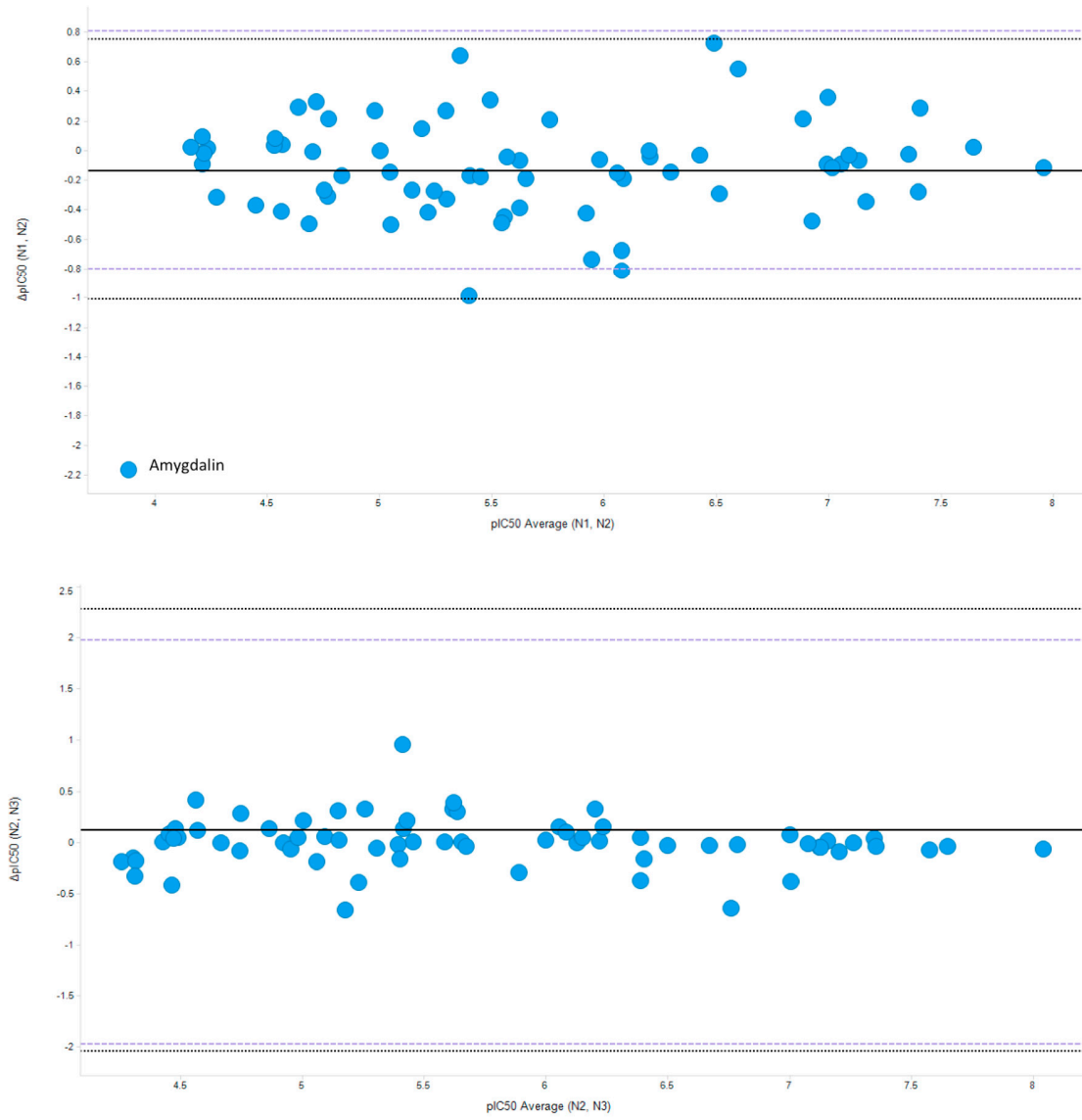


Figure S1. Continued.

*E. coli* ATCC 86980

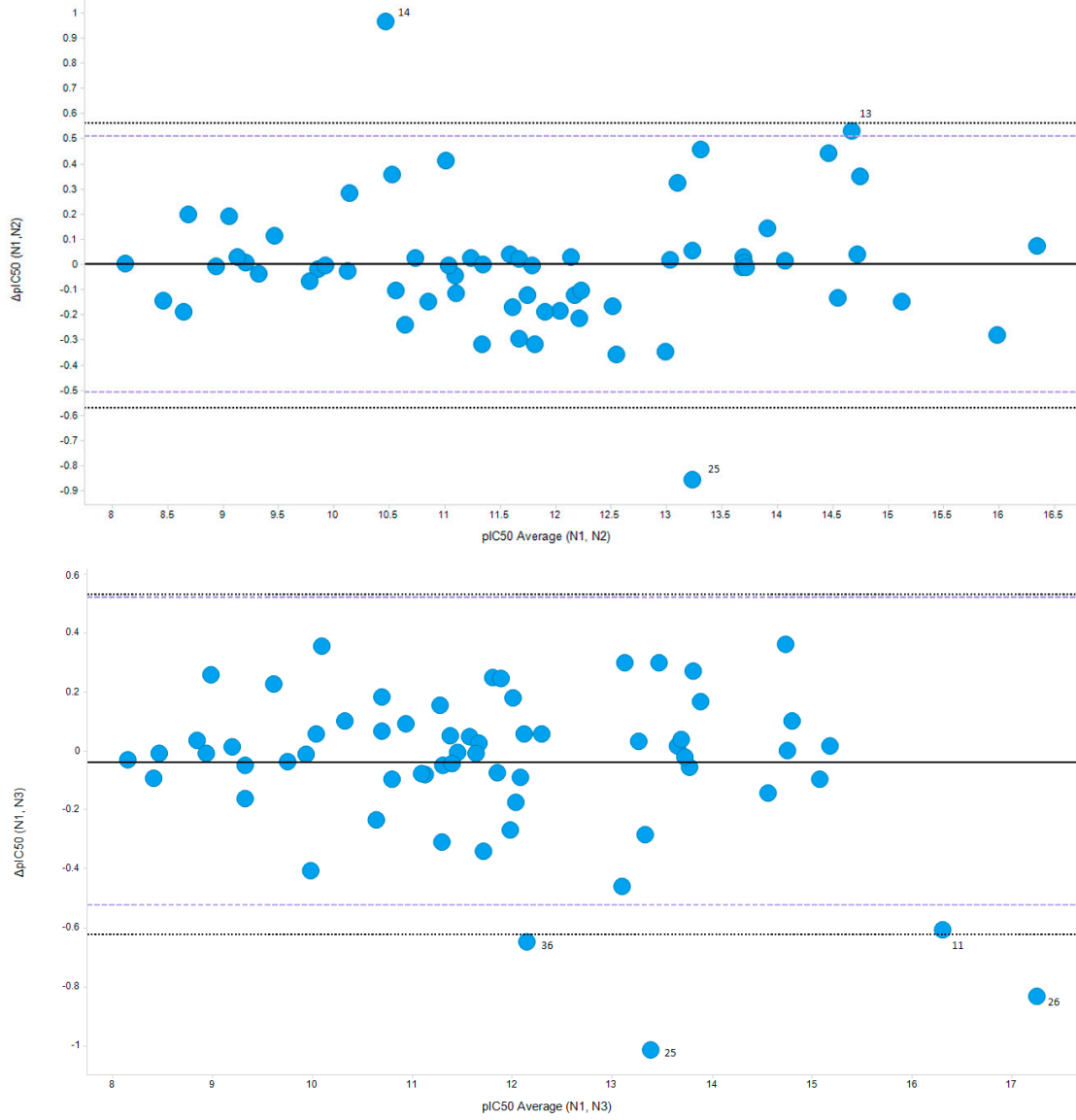


Figure S1. Continued.

*E. coli* ATCC 86980

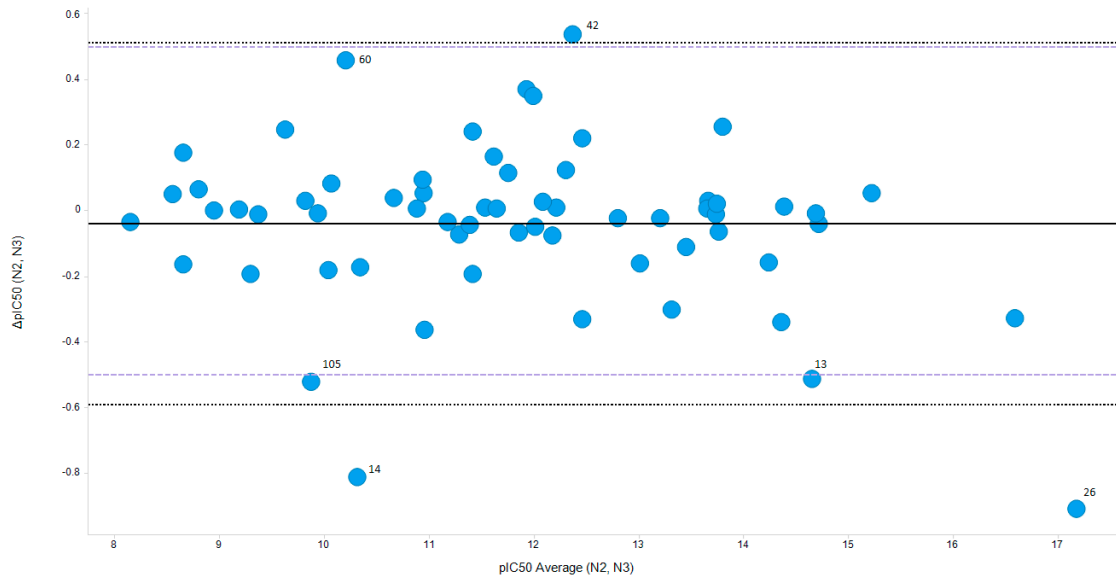


Figure S1. Continued.

*E. coli* ATCC 29181

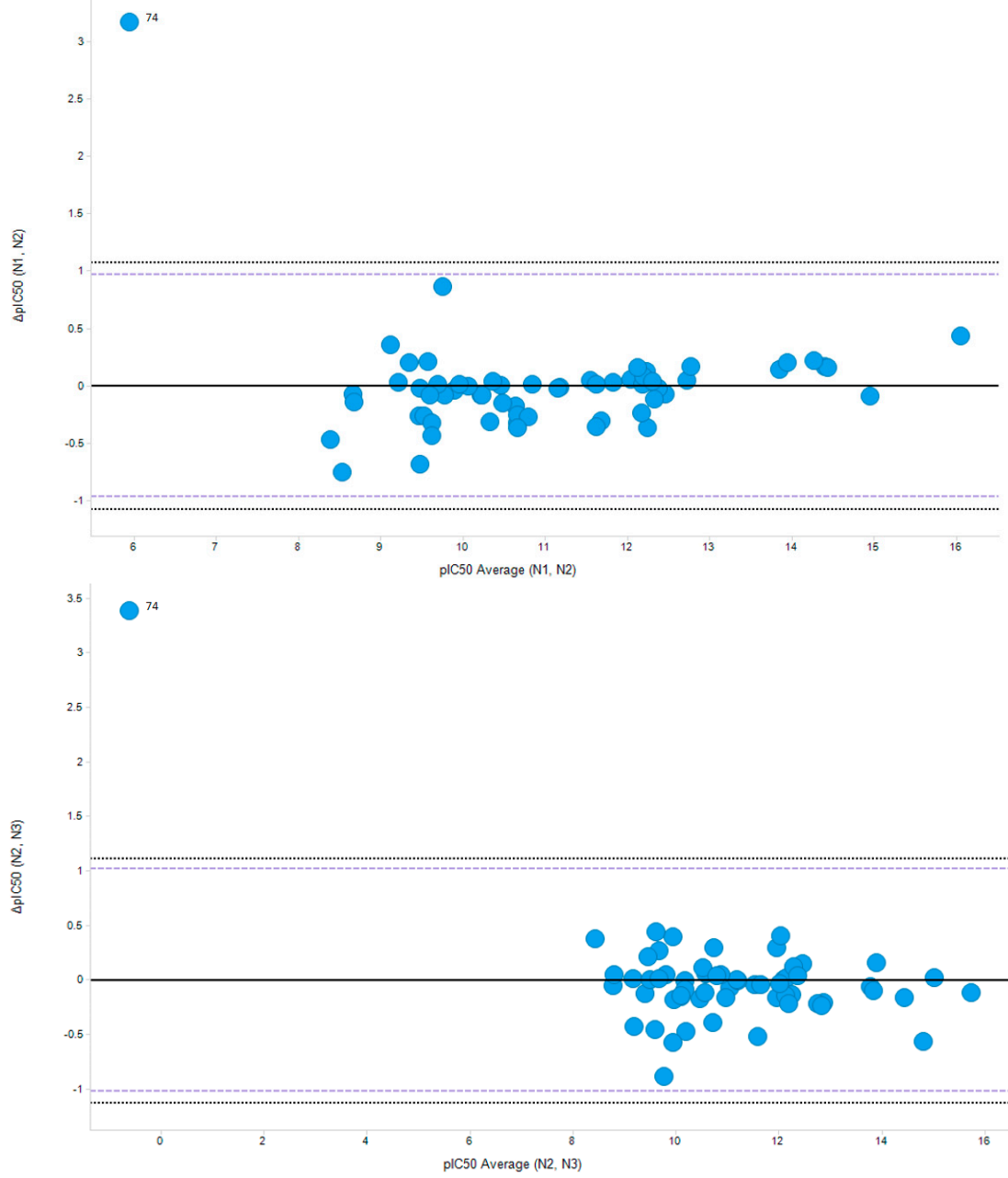


Figure S1. Continued.

*E. coli* ATCC 29181

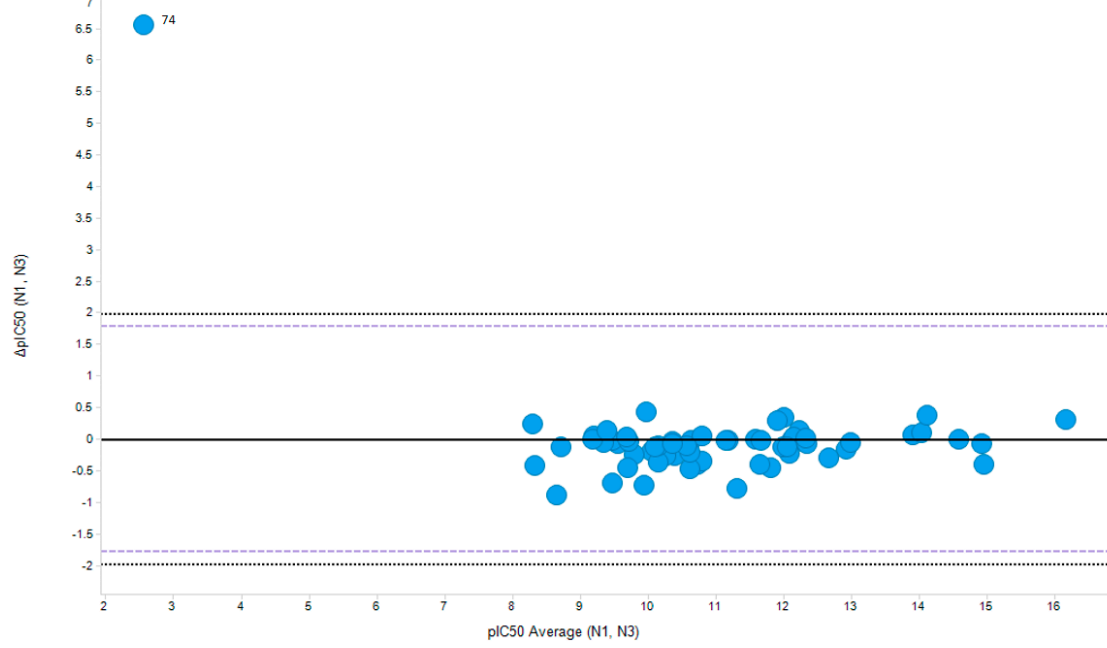


Figure S1. Continued.

*E. coli* AHDRCC 81113

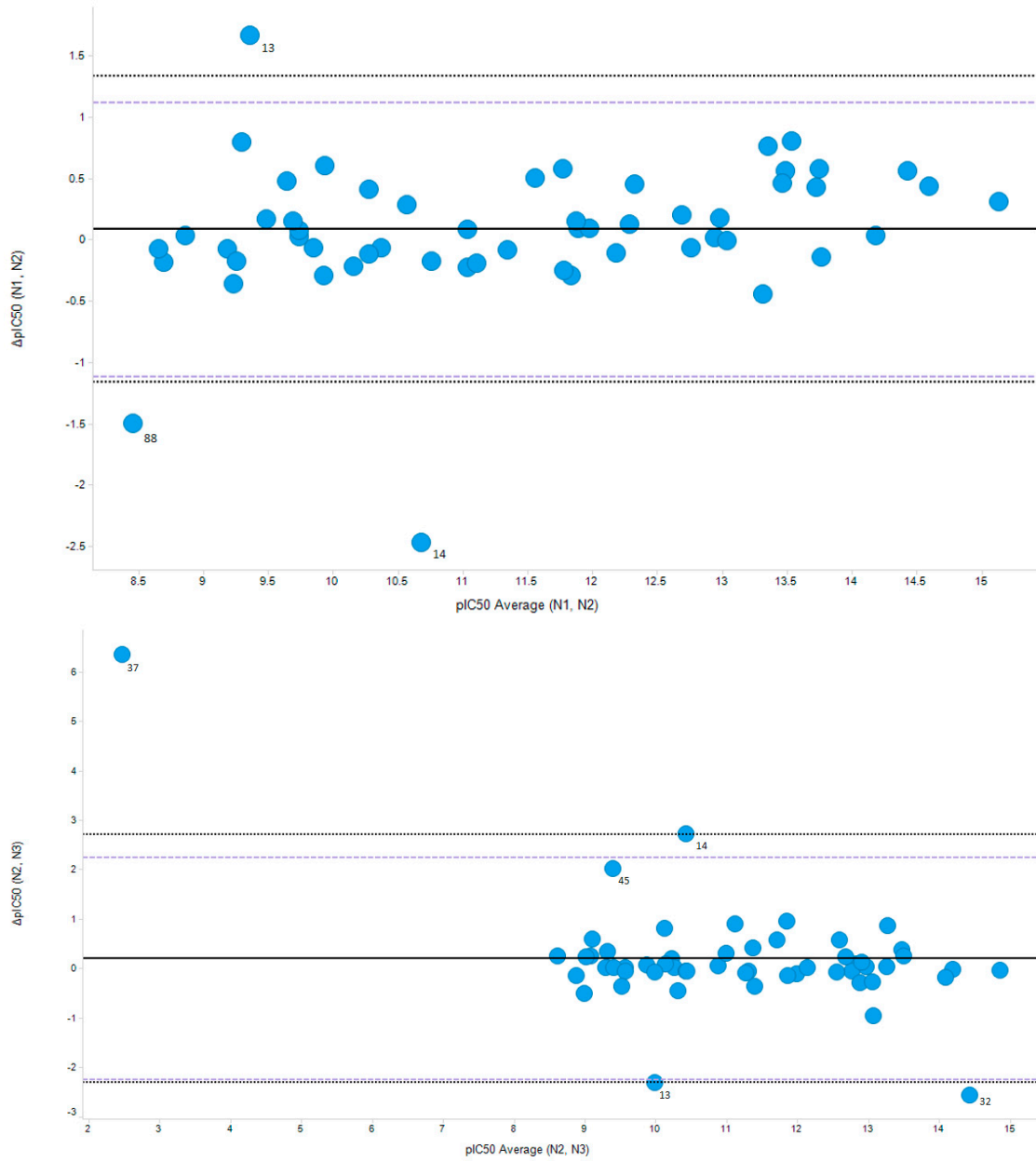


Figure S1. Continued.

*E. coli* AHDRCC 81113

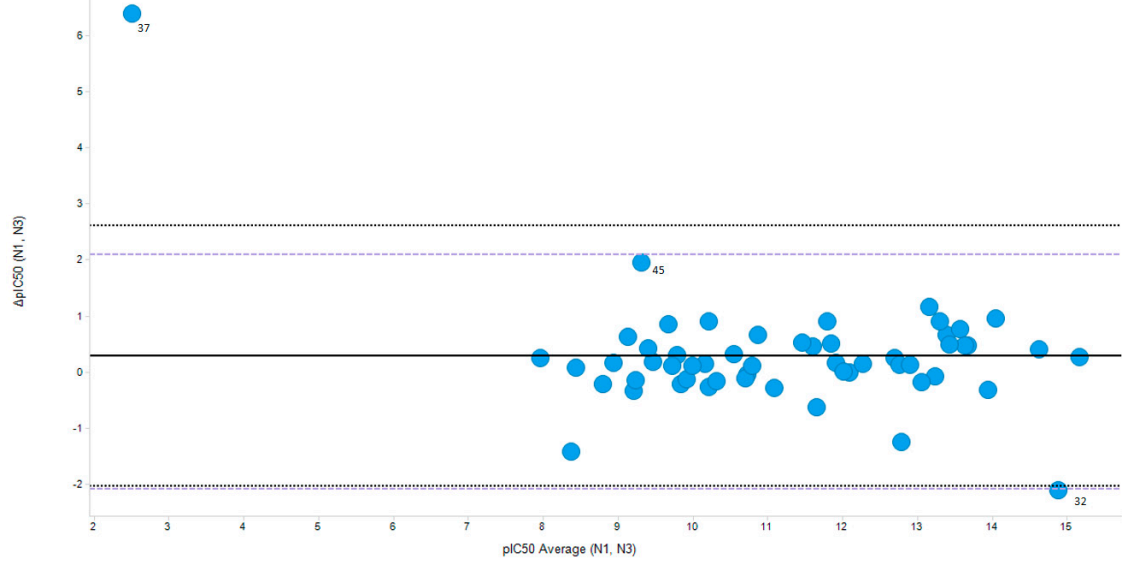


Figure S1. Continued.