

Figure S1. Land cover of the study area in 1979 and 2010 (modified from Hoyos et al. 2013). The location of the study area within Córdoba Province and in South America is indicated.

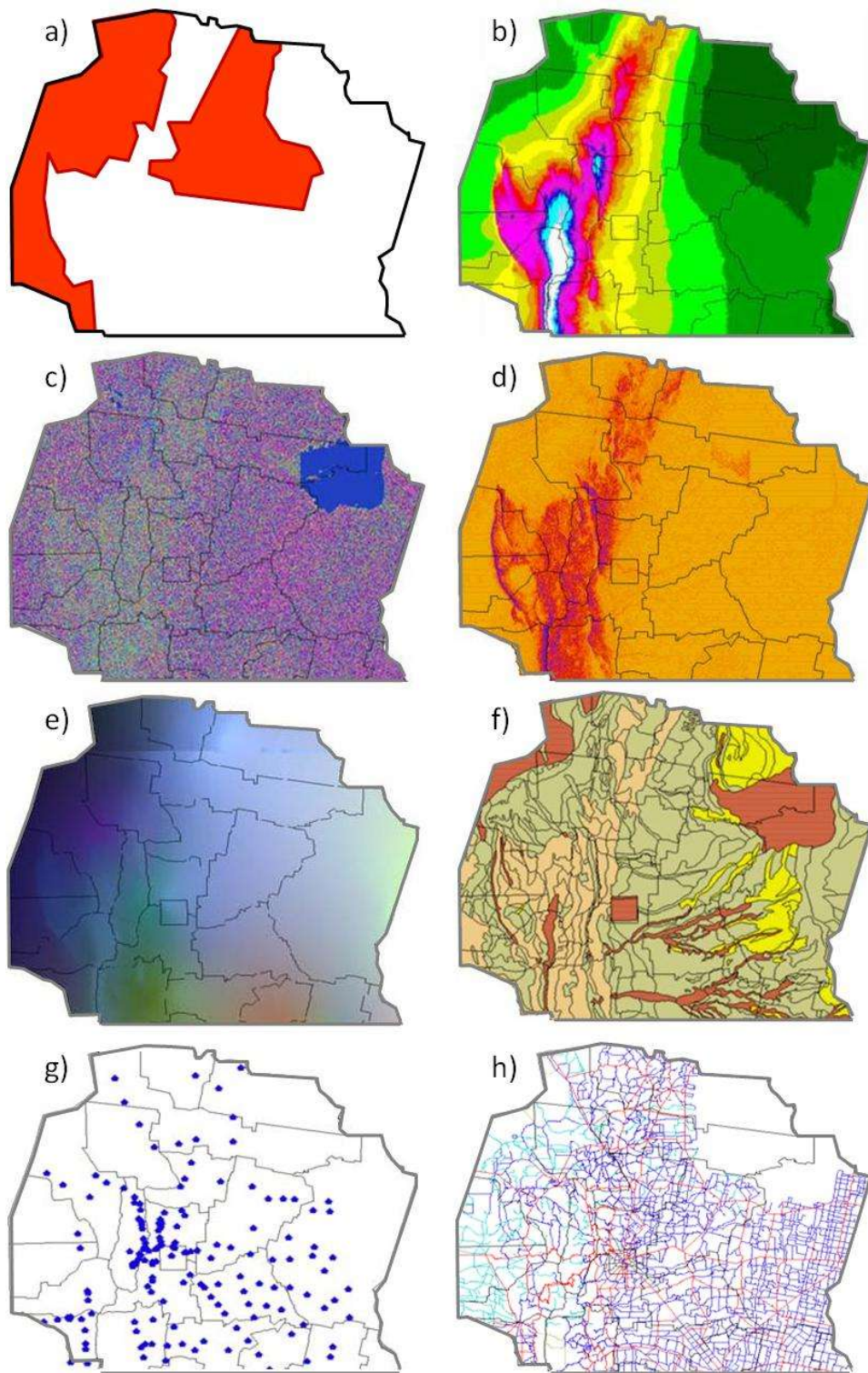


Figure S2. Study area (a) and possible driving forces of land cover change: (b) altitude, (c) slope, (d) topographic position, (e) annual precipitation, (f) soil type/soil productivity index, (g) human settlements, (h) roads.