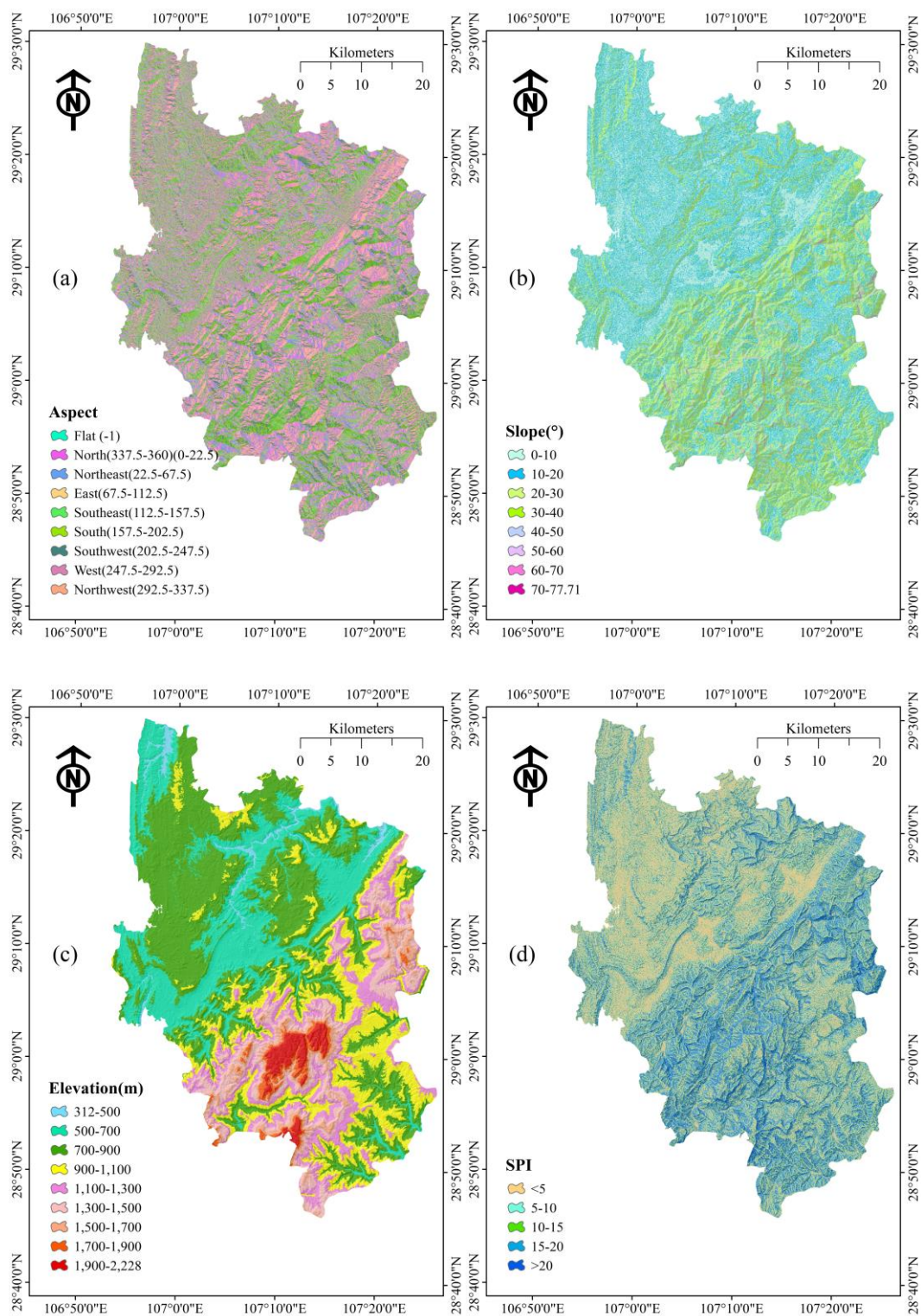
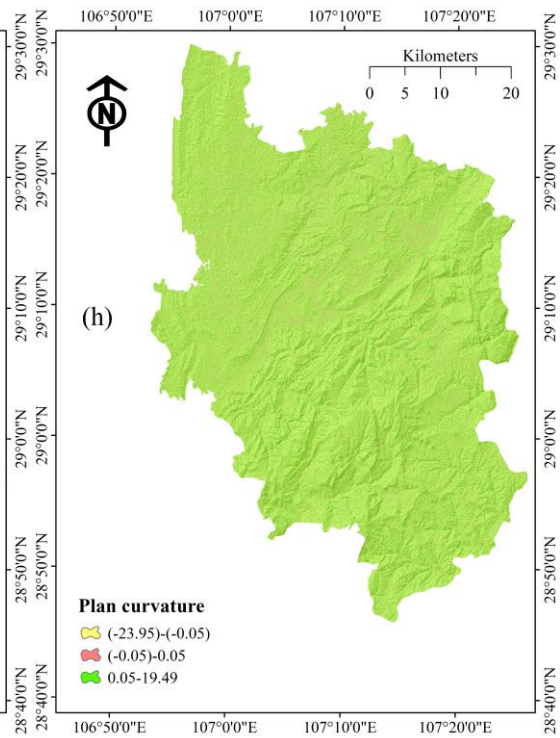
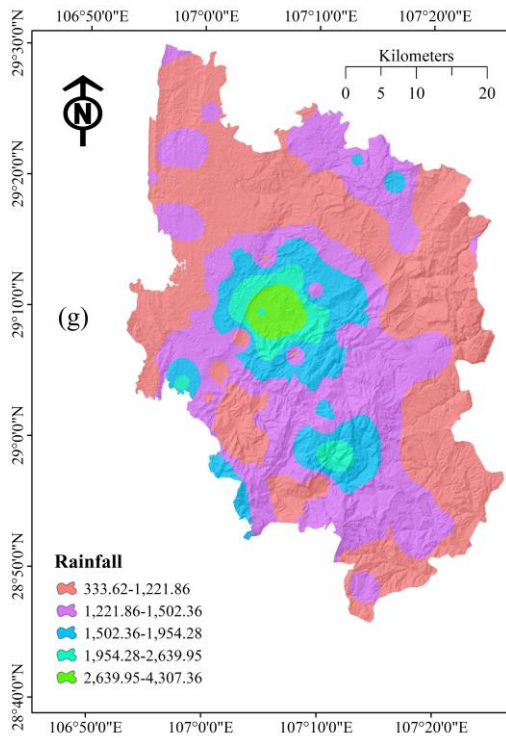
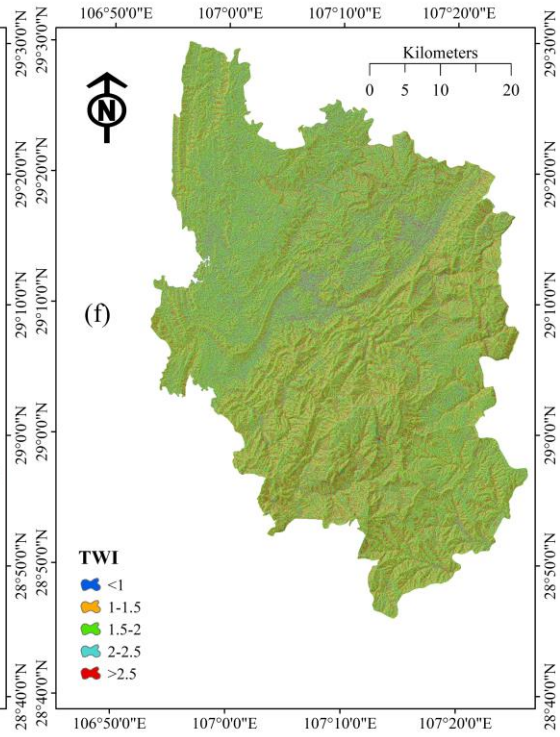
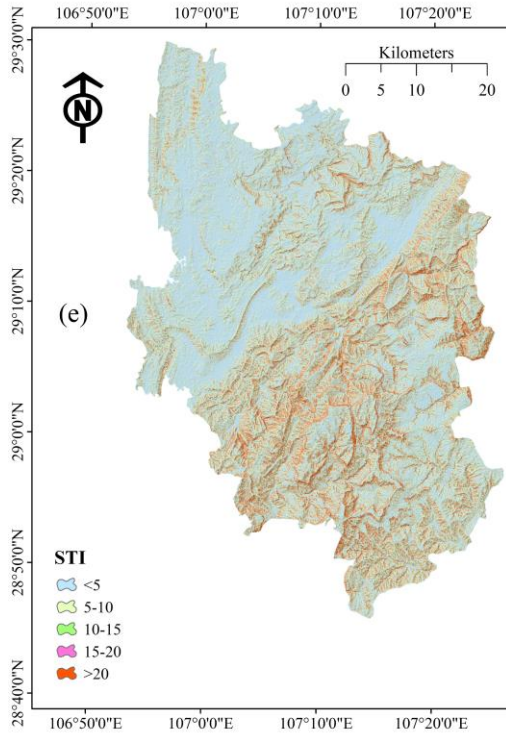
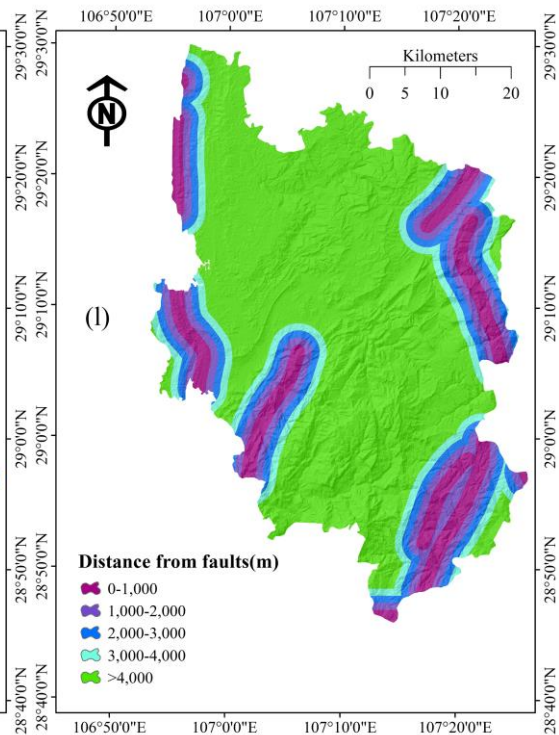
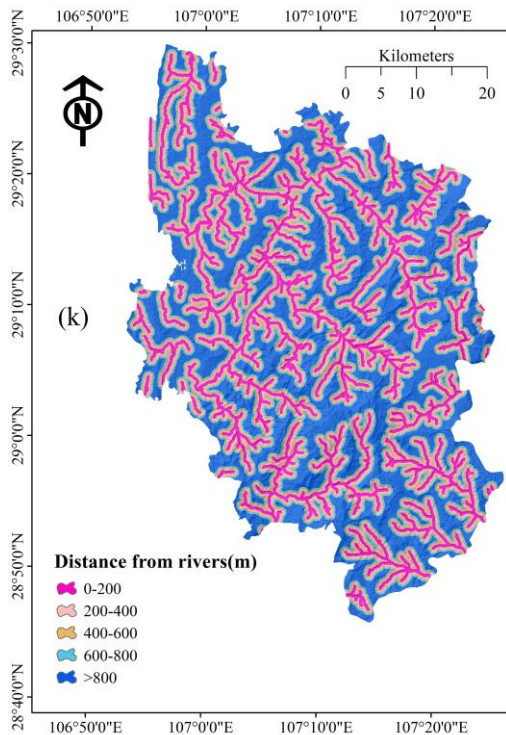
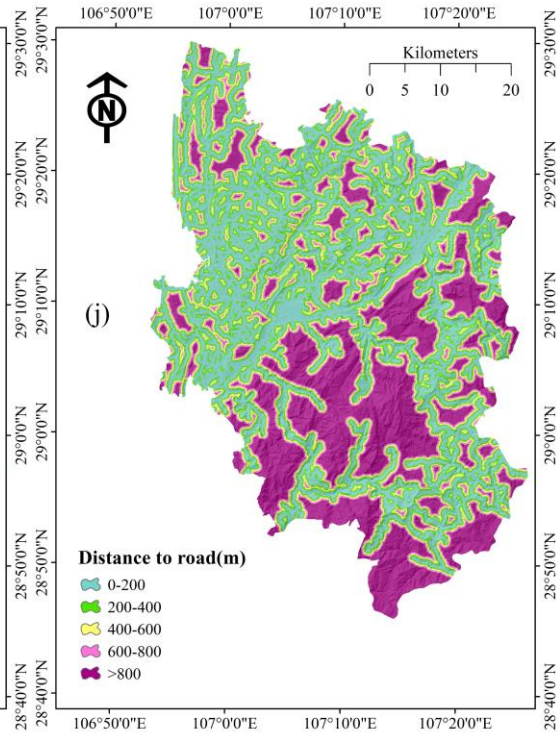
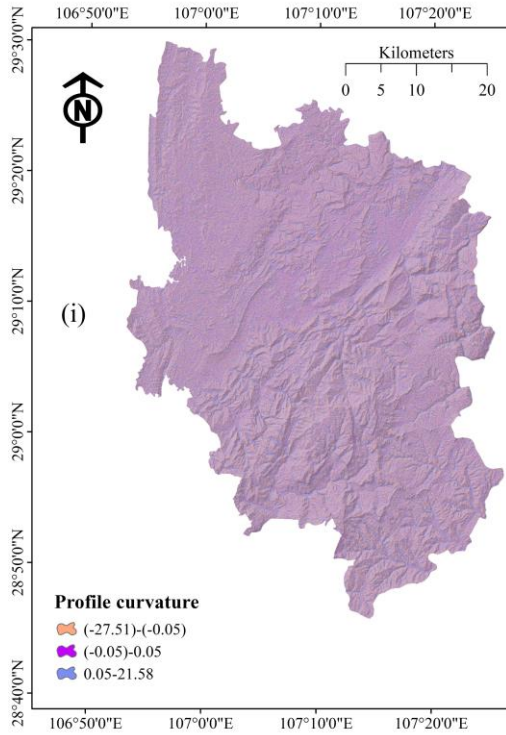


Supplementary







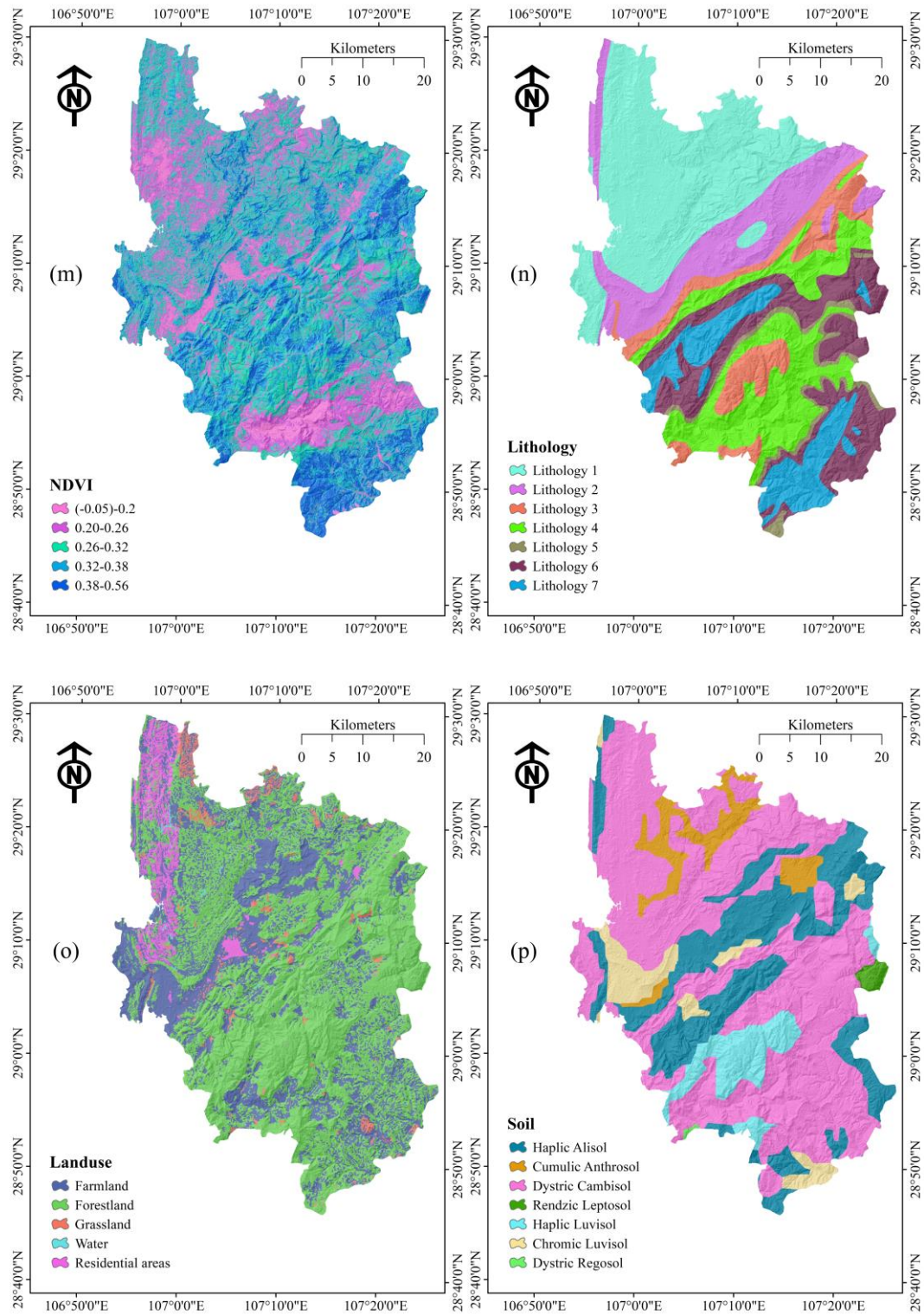


Figure S1. Landslide causative factors: (a) aspect, (b) slope, (c) elevation, (d) SPI, (e) STI, (f) TWI, (g) rainfall, (h) plan curvature, (i) profile curvature, (j) distance to roads, (k) distance to river, (l) distance to faults (m), (m) NDVI, (n) lithology, (o) landuse, (p) soil.

Table S1. Correlation between landslide and factors using WoE model.

Factor	class	%percentage of landslides	%percentage of domain	W+	W-	C	S(C)	C/S(C)
Aspect	Flat (-1)	0.000	0.000	0.000	0.000	0.000	0.073	-0.004
	North(337.5~360)(0~22.5)	0.124	0.125	-0.005	0.001	-0.006	0.210	-0.029
	Northeast(22.5~67.5)	0.144	0.121	0.169	-0.026	0.194	0.197	0.985
	East(67.5~112.5)	0.153	0.131	0.157	-0.026	0.183	0.192	0.955
	Southeast(112.5~157.5)	0.129	0.122	0.056	-0.008	0.064	0.206	0.311
	South(157.5~202.5)	0.110	0.112	-0.018	0.002	-0.020	0.221	-0.091
	Southwest(202.5~247.5)	0.139	0.117	0.174	-0.025	0.199	0.200	0.997
	West(247.5~292.5)	0.096	0.130	-0.308	0.039	-0.347	0.235	-1.474
Northwest(292.5~337.5)	0.105	0.142	-0.297	0.041	-0.338	0.225	-1.500	
Slope (°)	0-10	0.019	0.243	-2.542	0.259	-2.802	0.505	-5.550
	10 - 20	0.493	0.359	0.316	-0.233	0.549	0.138	3.968
	20 - 30	0.311	0.232	0.294	-0.109	0.403	0.149	2.698
	30 - 40	0.134	0.112	0.180	-0.025	0.205	0.203	1.012
	40 - 50	0.029	0.041	-0.362	0.013	-0.375	0.414	-0.906
	50 - 60	0.010	0.011	-0.104	0.001	-0.105	0.711	-0.148
	60 - 70	0.005	0.002	1.013	-0.003	1.016	1.002	1.013
	70 - 77.71	0.000	0.000		0.000	0.000	0.081	-0.001
Elevation (m)	312 - 500	0.019	0.015	0.269	-0.005	0.274	0.505	0.542
	500 - 700	0.278	0.223	0.217	-0.072	0.289	0.154	1.873
	700 - 900	0.344	0.353	-0.024	0.013	-0.037	0.146	-0.254
	900 - 1,100	0.244	0.163	0.405	-0.102	0.508	0.161	3.152
	1,100 - 1,300	0.096	0.100	-0.044	0.005	-0.049	0.235	-0.209
	1,300 - 1,500	0.010	0.076	-2.075	0.070	-2.145	0.711	-3.019
	1,500 - 1,700	0.010	0.035	-1.292	0.026	-1.318	0.711	-1.855
	1,700 - 1,900	0.000	0.016	0.000	0.016	-0.016	0.069	-0.227
1,900 - 2,228	0.000	0.020	0.000	0.020	-0.020	0.069	-0.288	
SPI	< 5	0.230	0.383	-0.512	0.223	-0.735	0.164	-4.468
	5 - 10	0.215	0.179	0.187	-0.046	0.233	0.168	1.383
	10 - 15	0.110	0.102	0.078	-0.009	0.088	0.221	0.397
	15 - 20	0.072	0.064	0.107	-0.008	0.115	0.268	0.428
	> 20	0.373	0.272	0.317	-0.150	0.467	0.143	3.264
STI	< 5	0.325	0.487	-0.403	0.274	-0.677	0.148	-4.583
	5 - 10	0.268	0.233	0.141	-0.047	0.188	0.156	1.203
	10 - 15	0.177	0.112	0.455	-0.076	0.531	0.181	2.928
	15 - 20	0.029	0.058	-0.697	0.030	-0.727	0.414	-1.755
	> 20	0.201	0.110	0.598	-0.107	0.706	0.173	4.088
TWI	< 1	0.010	0.008	0.142	-0.001	0.143	0.711	0.201
	1 - 1.5	0.158	0.173	-0.093	0.018	-0.111	0.190	-0.587
	1.5 - 2	0.407	0.400	0.017	-0.011	0.028	0.141	0.198

	2 - 2.5	0.230	0.232	-0.008	0.002	-0.011	0.164	-0.065
	> 2.5	0.196	0.187	0.049	-0.011	0.060	0.174	0.345
Rainfall (mm/yr)	333.62 - 1,221.86	0.541	0.464	0.152	-0.153	0.305	0.139	2.200
	1,221.86 - 1,502.36	0.359	0.367	-0.023	0.013	-0.036	0.144	-0.249
	1,502.36 - 1,954.28	0.086	0.115	-0.286	0.032	-0.318	0.247	-1.288
	1,954.28 - 2,639.95	0.010	0.035	-1.297	0.026	-1.323	0.711	-1.862
	2,639.95 - 4,307.36	0.005	0.019	-1.364	0.014	-1.378	1.002	-1.375
Plan curvature	(-23.95) - (-0.05)	0.474	0.455	0.040	-0.035	0.074	0.139	0.537
	(-0.05) - 0.05	0.100	0.077	0.268	-0.026	0.293	0.230	1.276
	0.05 - 19.49	0.426	0.468	-0.094	0.076	-0.170	0.140	-1.218
Profile curvatur	(-27.51) - (-0.05)	0.478	0.461	0.036	-0.032	0.068	0.138	0.492
	(-0.05) - 0.05	0.053	0.061	-0.142	0.009	-0.151	0.310	-0.487
	0.05 - 21.58	0.469	0.478	-0.019	0.017	-0.036	0.139	-0.259
Distance to roads (m)	0 - 200	0.469	0.321	0.380	-0.246	0.625	0.139	4.512
	200 - 400	0.201	0.196	0.024	-0.006	0.030	0.173	0.176
	400 - 600	0.153	0.129	0.168	-0.028	0.195	0.192	1.017
	600 - 800	0.077	0.085	-0.110	0.010	-0.120	0.260	-0.461
	> 800	0.100	0.268	-0.982	0.206	-1.188	0.230	-5.162
Distance to rivers (m)	0 - 200	0.187	0.189	-0.015	0.004	-0.019	0.178	-0.106
	200 - 400	0.225	0.163	0.319	-0.076	0.395	0.166	2.386
	400 - 600	0.139	0.150	-0.080	0.014	-0.094	0.200	-0.469
	600 - 800	0.167	0.137	0.203	-0.036	0.240	0.185	1.295
	> 800	0.282	0.360	-0.243	0.115	-0.358	0.154	-2.330
Distance to faults (m)	0 - 1,000	0.091	0.095	-0.044	0.005	-0.048	0.241	-0.201
	1,000 - 2,000	0.105	0.091	0.141	-0.015	0.157	0.225	0.696
	2,000 - 3,000	0.057	0.086	-0.399	0.030	-0.430	0.297	-1.445
	3,000 - 4,000	0.067	0.081	-0.192	0.015	-0.207	0.277	-0.748
	> 4,000	0.679	0.647	0.049	-0.097	0.146	0.148	0.983
NDVI	(-0.05) - 0.20	0.100	0.090	0.114	-0.012	0.126	0.230	0.548
	0.20 - 0.26	0.263	0.231	0.130	-0.043	0.173	0.157	1.101
	0.26 - 0.32	0.292	0.300	-0.026	0.011	-0.037	0.152	-0.242
	0.32 - 0.38	0.258	0.256	0.011	-0.004	0.015	0.158	0.093
	0.38 - 0.56	0.086	0.124	-0.366	0.043	-0.409	0.247	-1.657
Lithology	Lithology 1	0.053	0.311	-1.776	0.318	-2.094	0.310	-6.760
	Lithology 2	0.115	0.146	-0.239	0.036	-0.274	0.217	-1.263
	Lithology 3	0.014	0.092	-1.857	0.082	-1.939	0.582	-3.334
	Lithology 4	0.124	0.171	-0.316	0.054	-0.371	0.210	-1.768

	Lithology 5	0.129	0.032	1.403	-0.106	1.509	0.206	7.315
	Lithology 6	0.014	0.155	-2.382	0.154	-2.536	0.582	-4.362
	Lithology 7	0.024	0.094	-1.365	0.074	-1.439	0.453	-3.179
Landuse	Farmland	0.536	0.315	0.530	-0.389	0.918	0.139	6.622
	Forestland	0.397	0.605	-0.421	0.422	-0.843	0.141	-5.962
	Grassland	0.019	0.026	-0.324	0.007	-0.332	0.505	-0.657
	Water	0.000	0.002	0.000	0.002	-0.002	0.070	-0.029
	Residential areas	0.048	0.051	-0.069	0.004	-0.073	0.324	-0.225
Soil	Haplic Alisol	0.182	0.235	-0.257	0.067	-0.324	0.179	-1.807
	Cumulic Anthrosol	0.048	0.061	-0.243	0.014	-0.257	0.324	-0.792
	Dystric Cambisol	0.732	0.578	0.236	-0.454	0.691	0.156	4.422
	Rendzic Leptosol	0.000	0.007	0.000	0.007	-0.007	0.069	-0.102
	Haplic Luvisol	0.014	0.062	-1.471	0.050	-1.521	0.582	-2.615
	Chromic Luvisol	0.024	0.056	-0.843	0.033	-0.876	0.453	-1.934
	Dystric Regosol	0.000	0.001	0.000	0.001	-0.001	0.070	-0.013