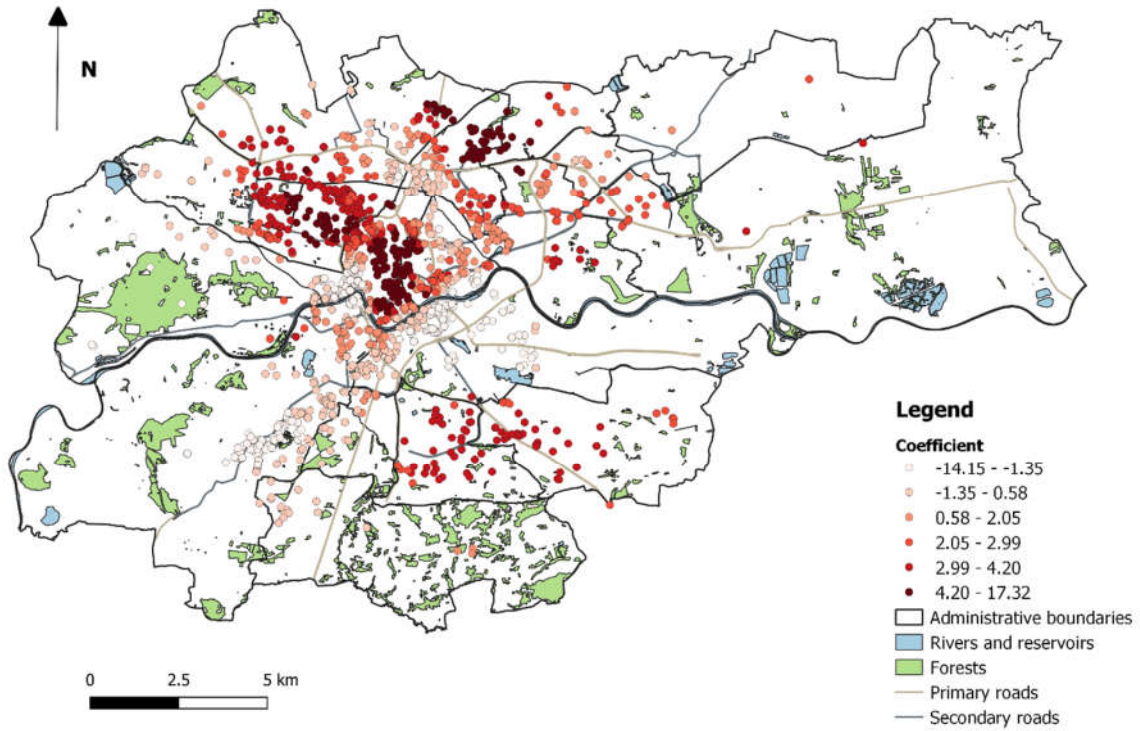
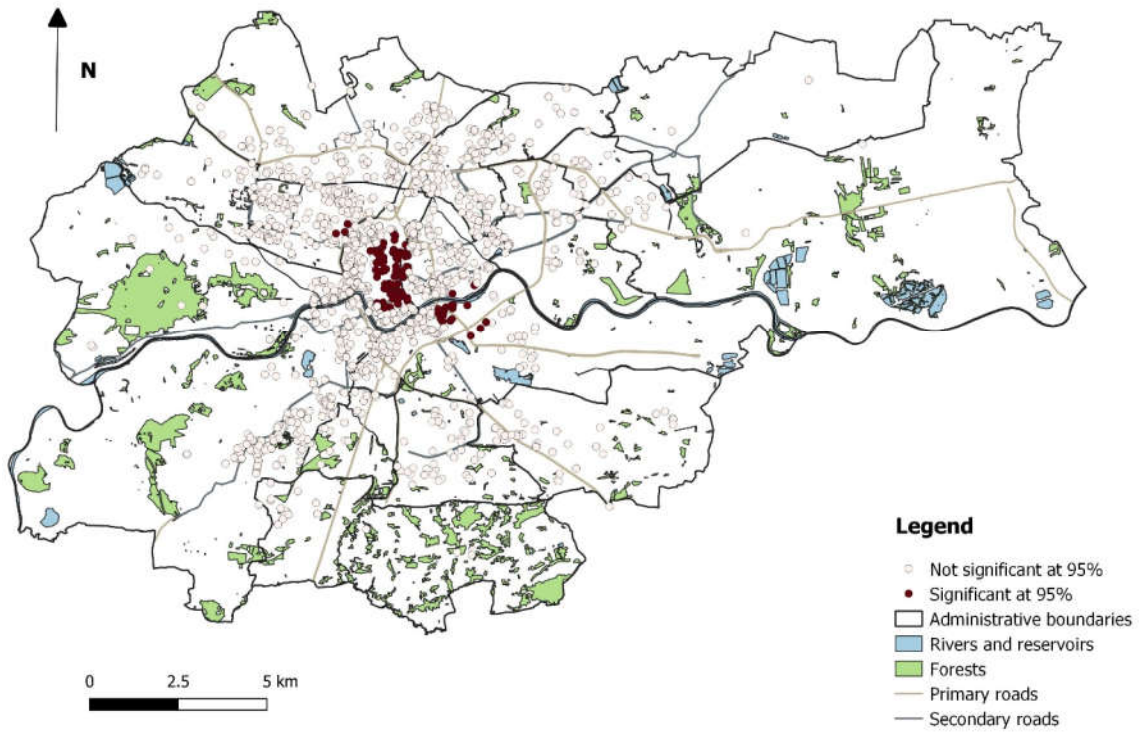


**Supplementary material**  
Remaining local coefficient estimates of GWR-SAR model



**Fig. S1.** Local coefficient estimates for NR (number of rooms).



**Fig. S2.** Statistical significance of estimates for NR (number of rooms).

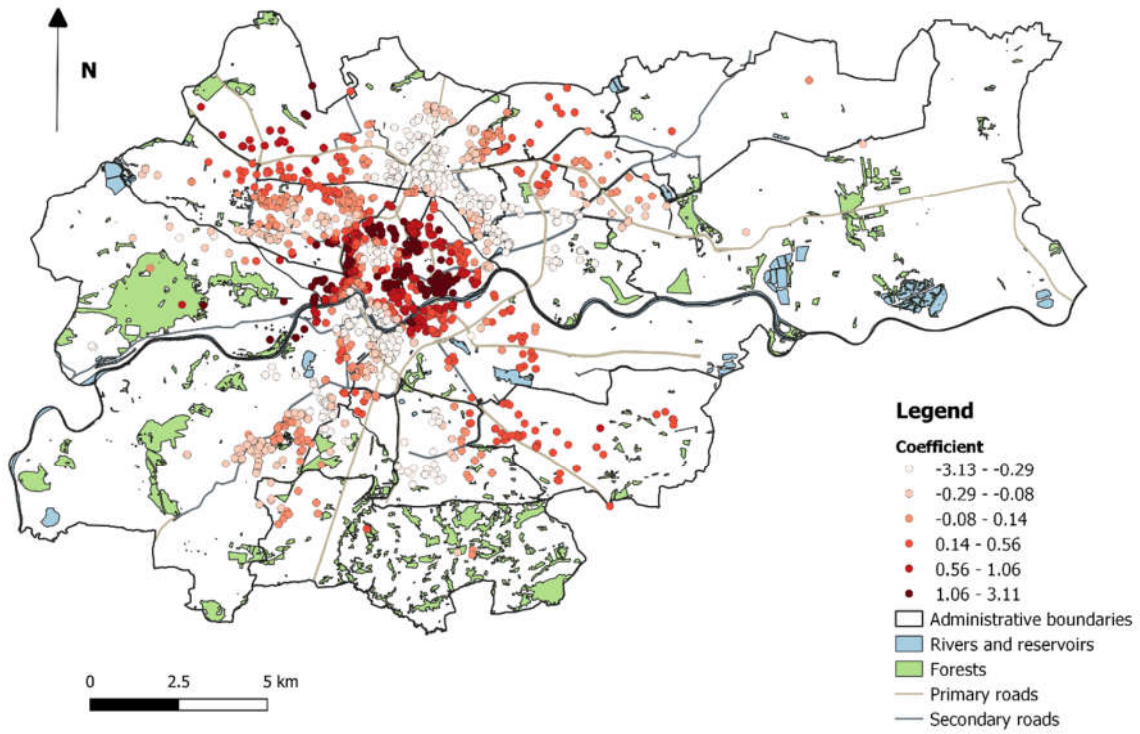


Fig. S3. Local coefficient estimates for FL (floor level).

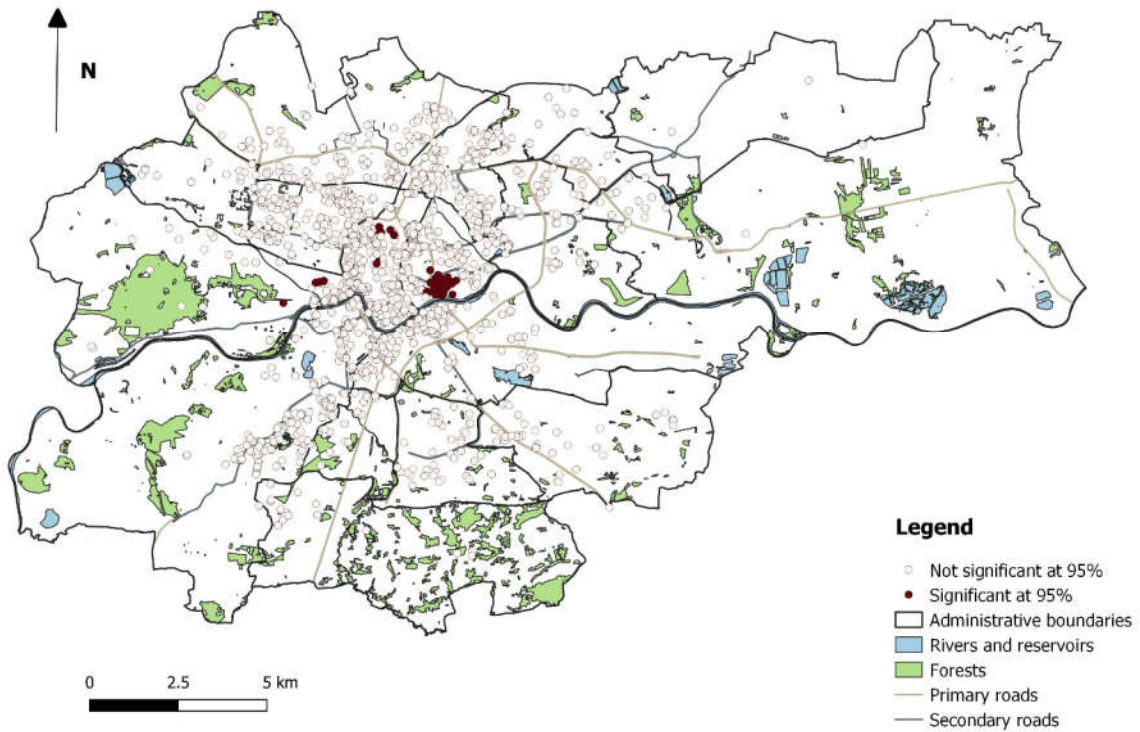
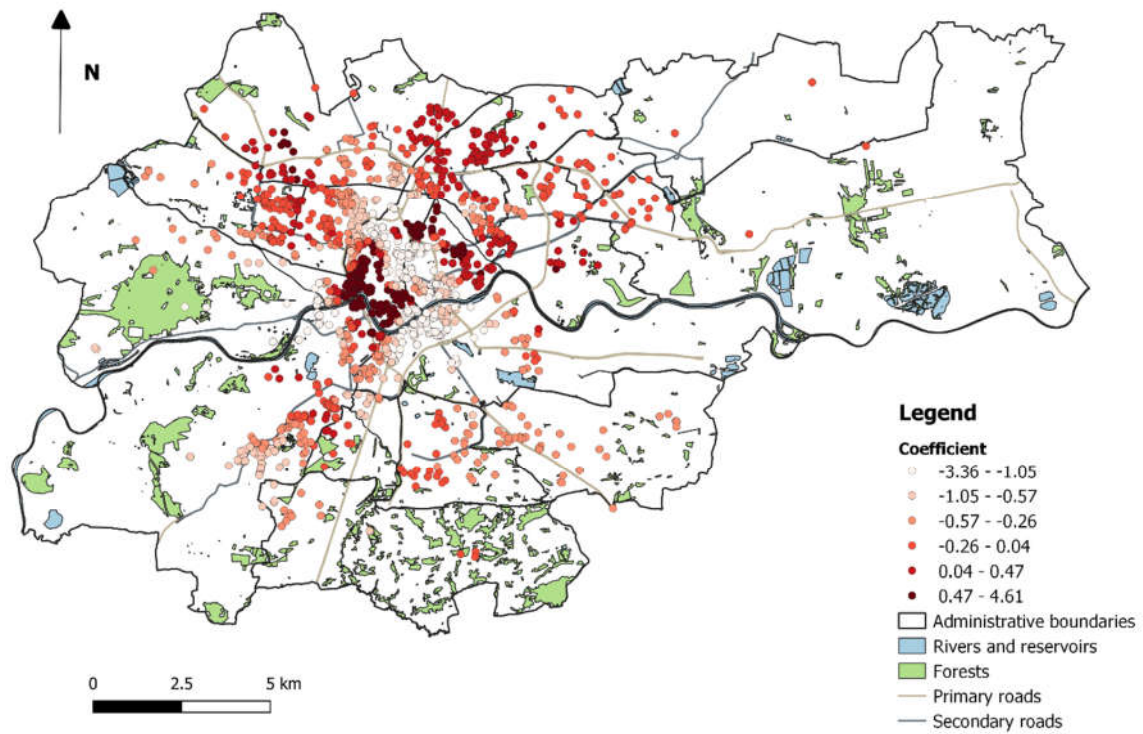
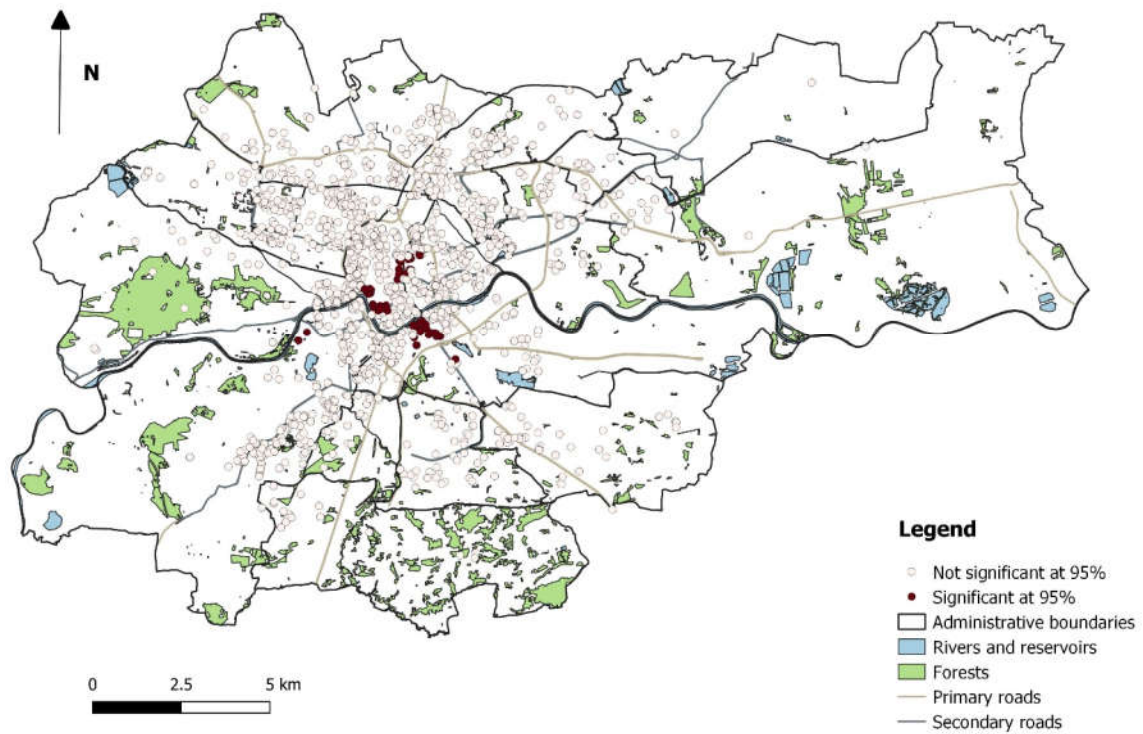


Fig. S4. Statistical significance of estimates for FL (floor level).



**Fig. S5.** Local coefficient estimates for NF (number of floors in the building).



**Fig. S6.** Statistical significance of estimates for NF (number of floors in the building).

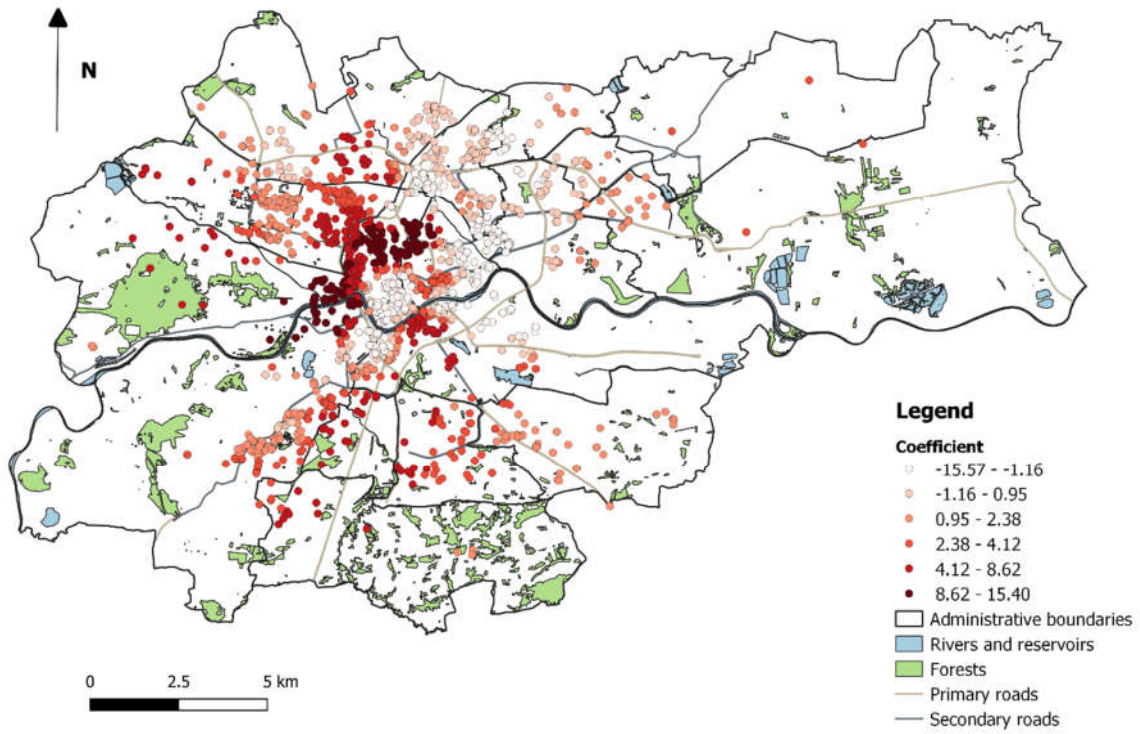


Fig. S7. Local coefficient estimates for AL (availability of lift in the building).

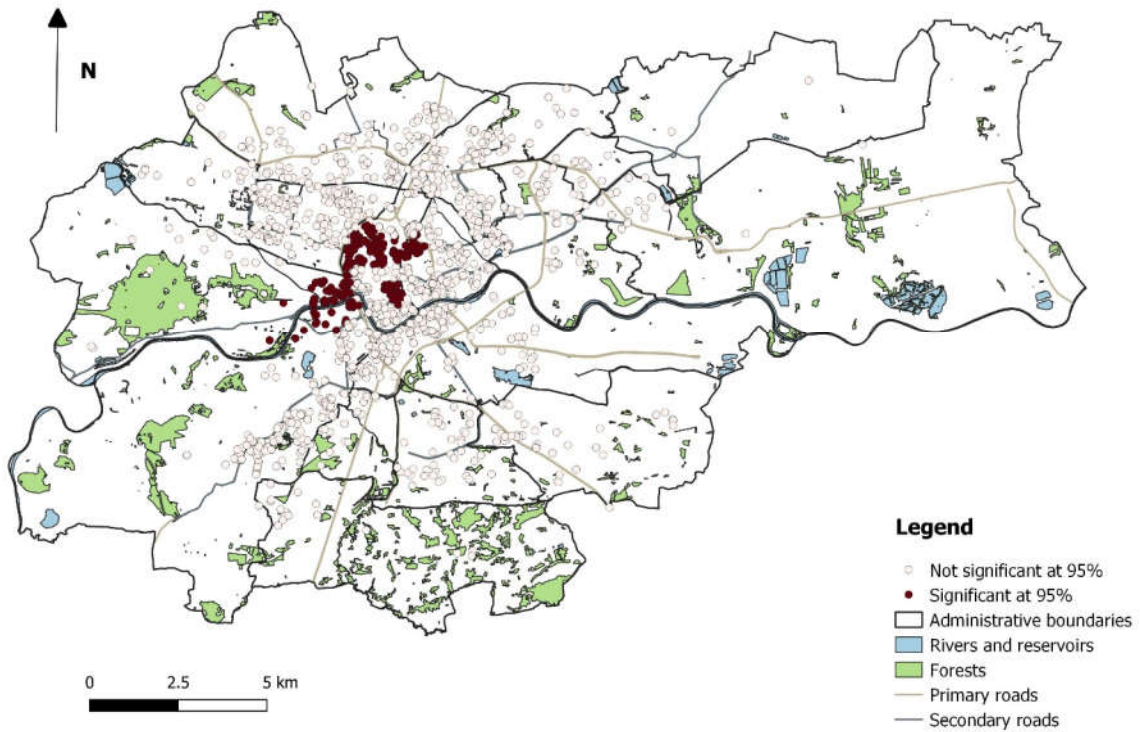


Fig. S8. Statistical significance of estimates for AL (availability of lift in the building).

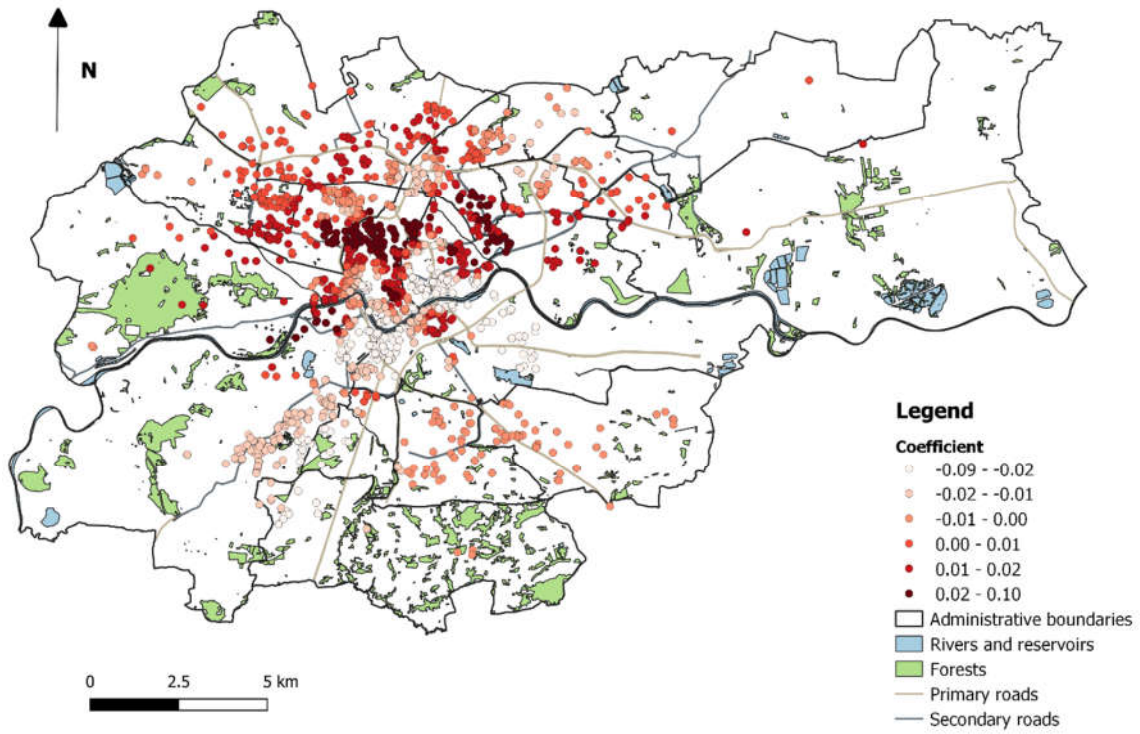


Fig. S9. Local coefficient estimates for DPT (distance to nearest bus stop, tram stop or train stop).

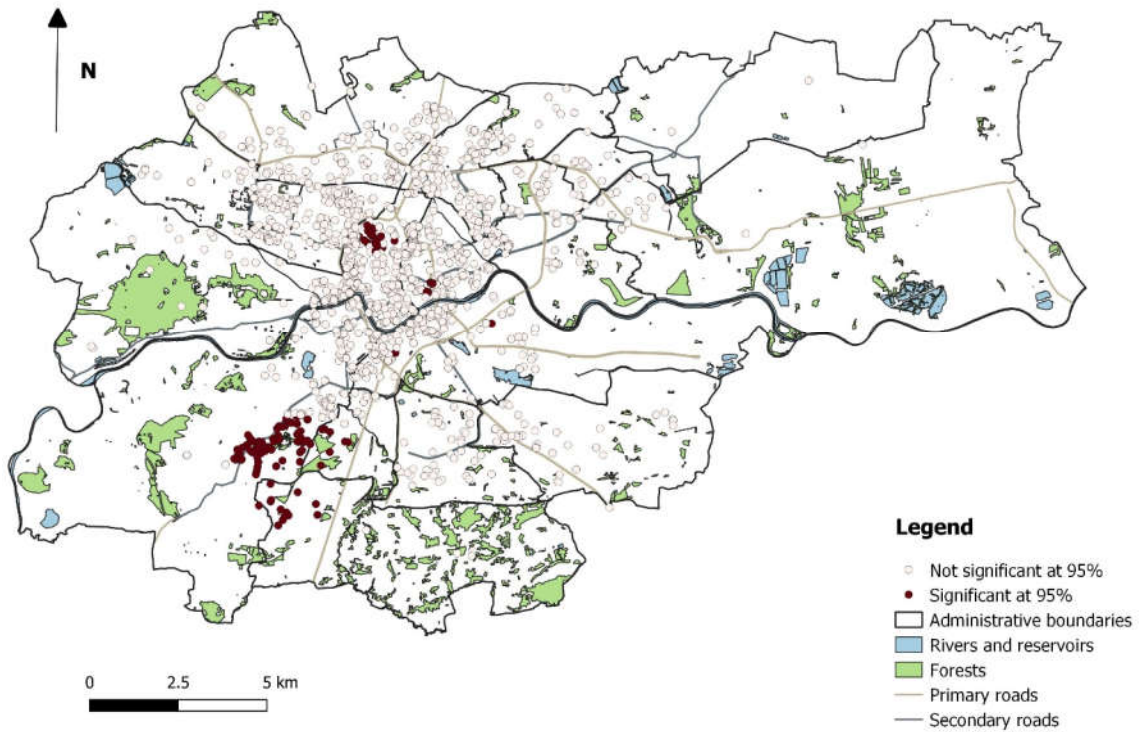


Fig. S10. Statistical significance of estimates for DPT (distance to nearest bus stop, tram stop or train stop).

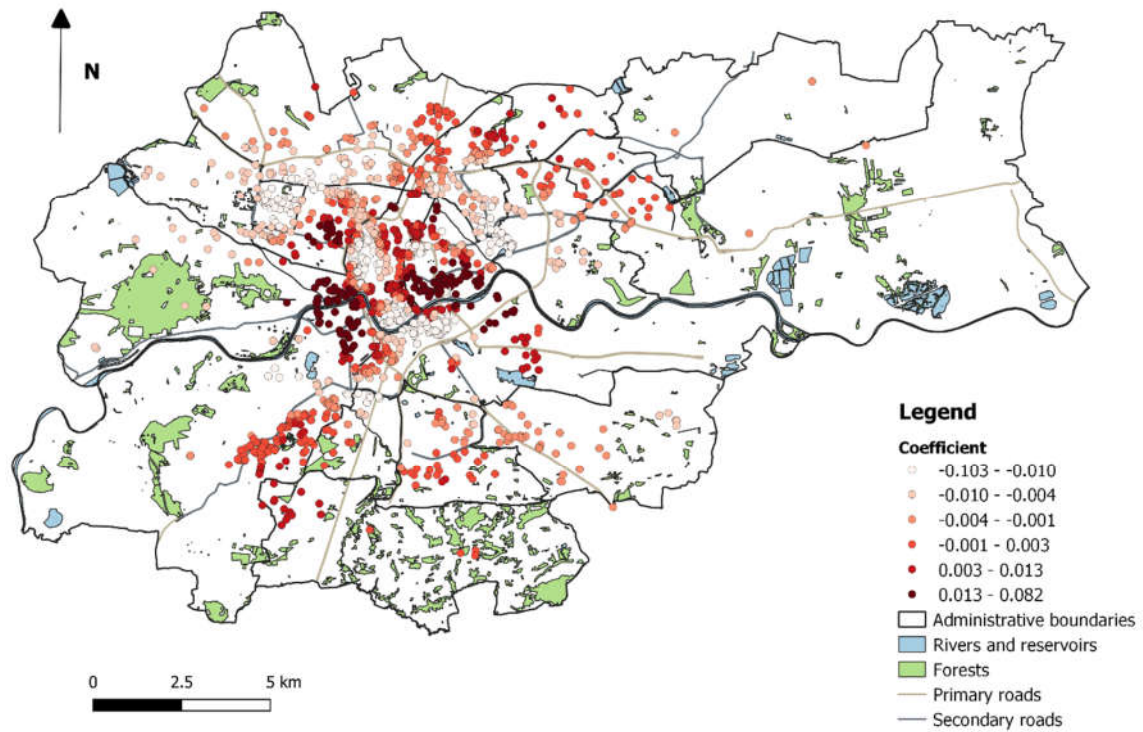


Fig. S11. Local coefficient estimates for DR (distance to nearest primary or secondary road).

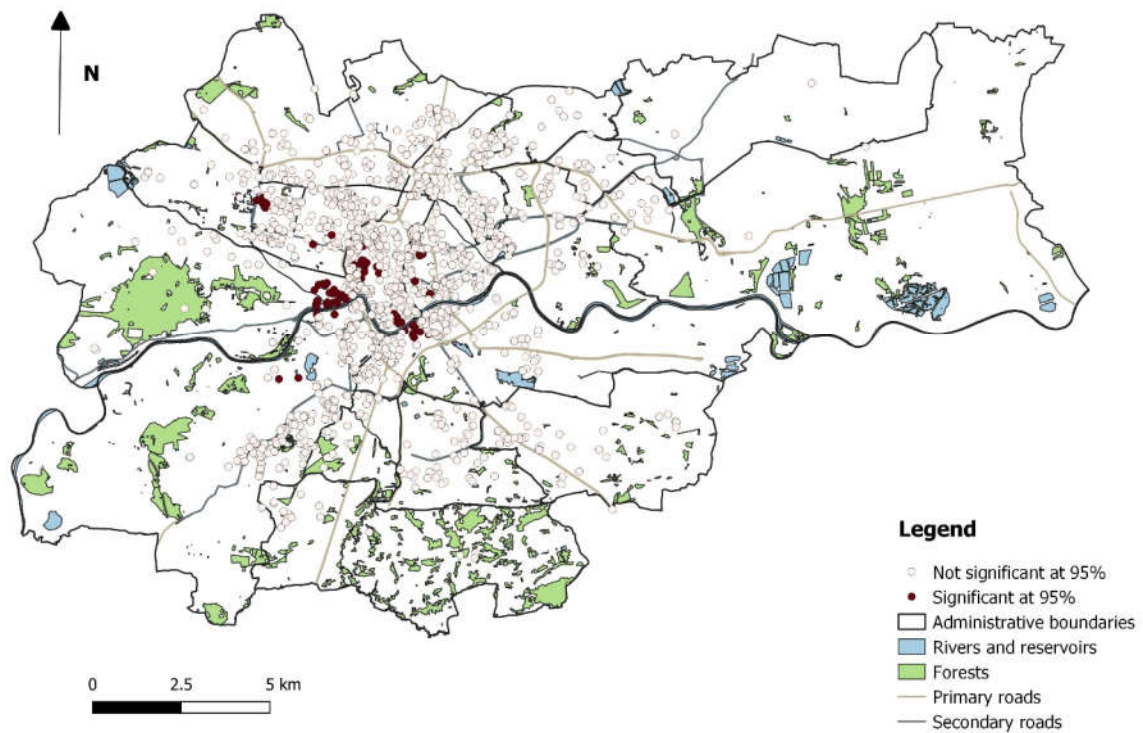


Fig. S12. Statistical significance of estimates for DR (distance to nearest primary or secondary road).

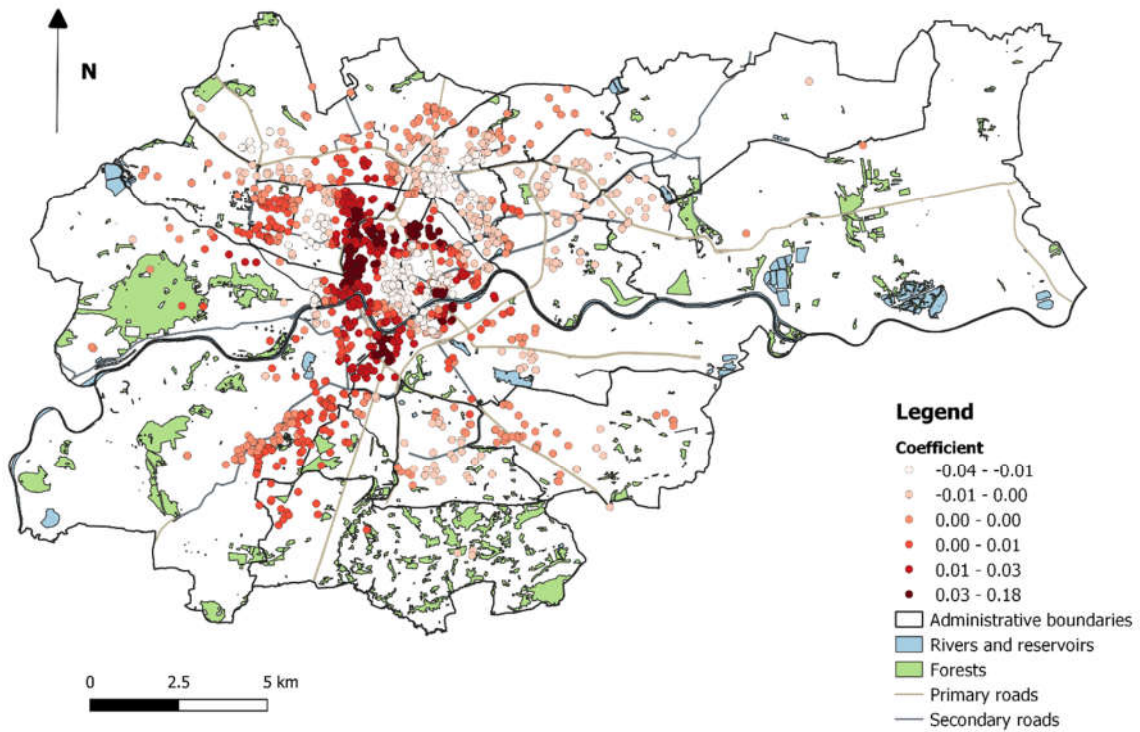


Fig. S13. Local coefficient estimates for DG (distance to nearest local government building).

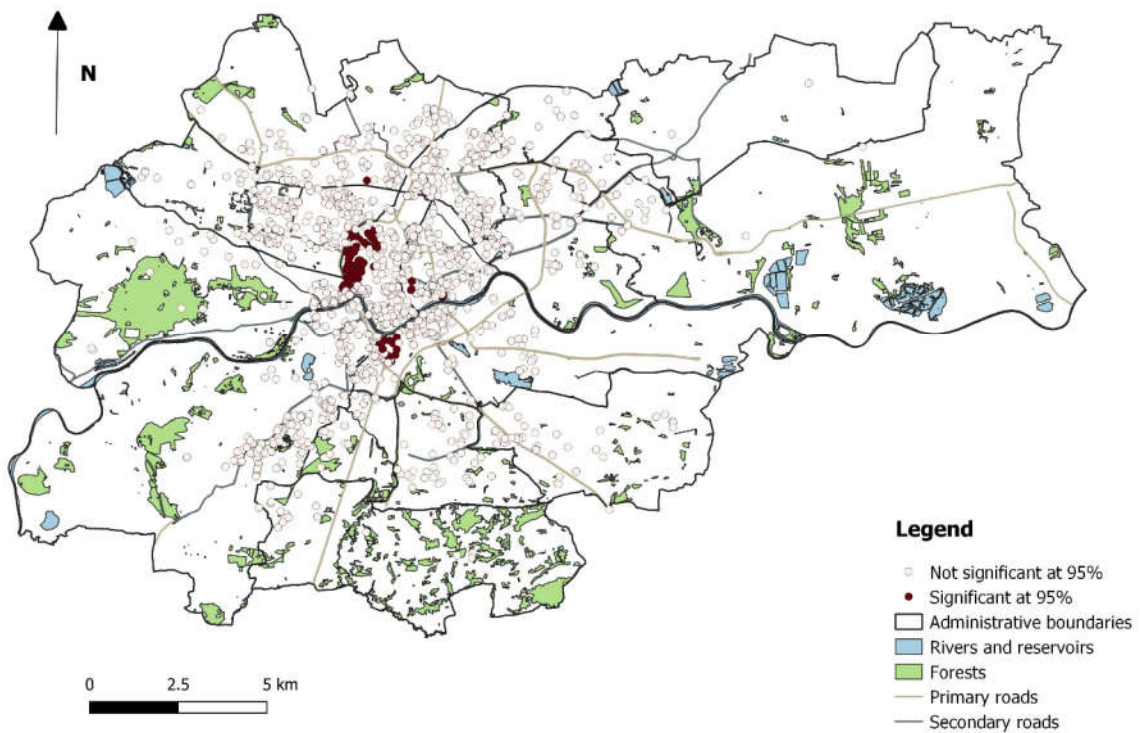


Fig. S14. Statistical significance of estimates for DG (distance to nearest local government building).

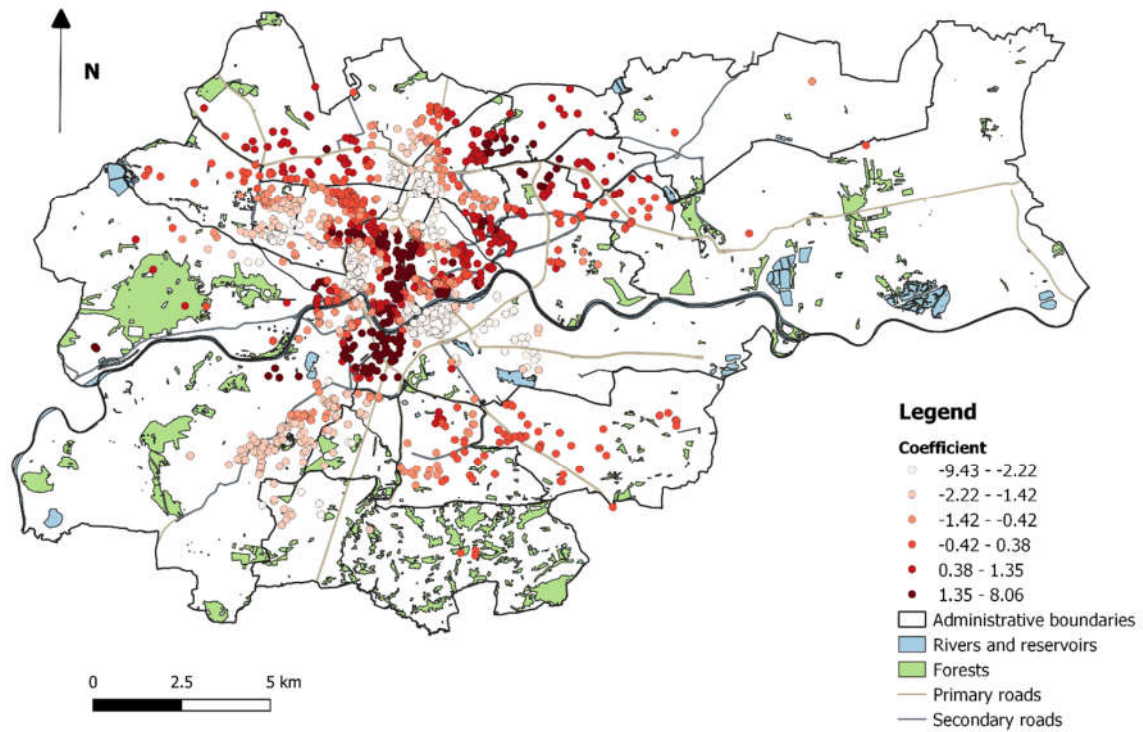


Fig. S15. Local coefficient estimates for DW (distance to nearest work centre).

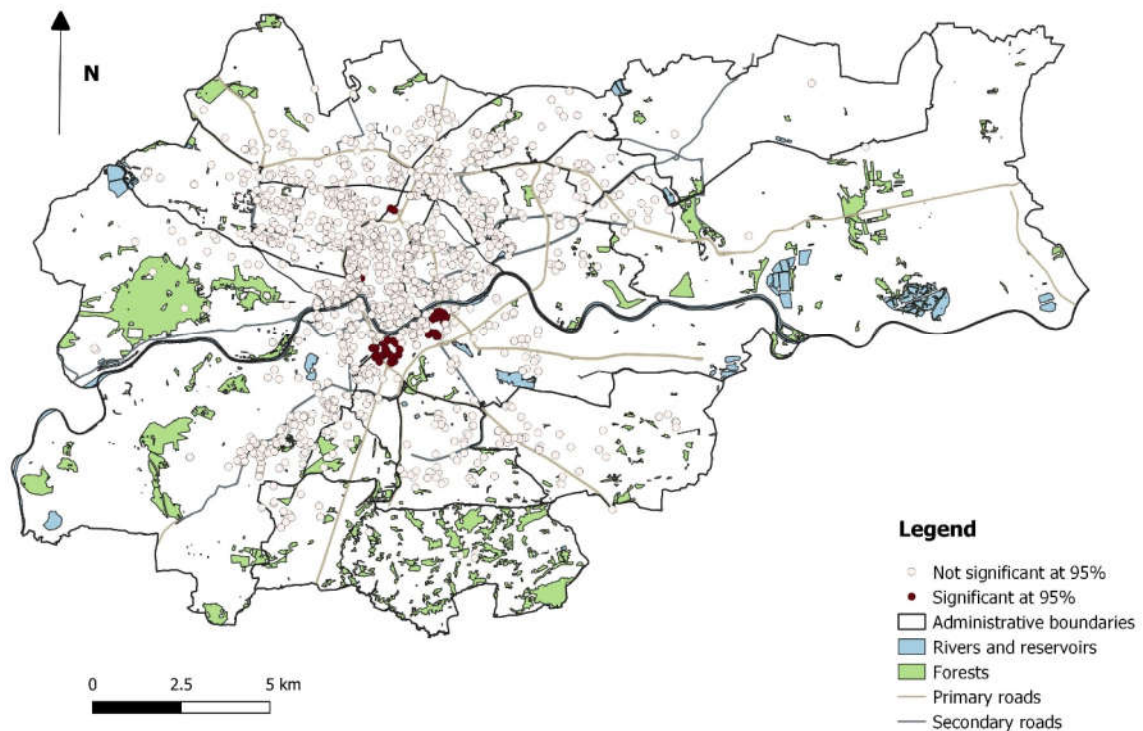


Fig. S16. Statistical significance of estimates for DW (distance to nearest work centre).



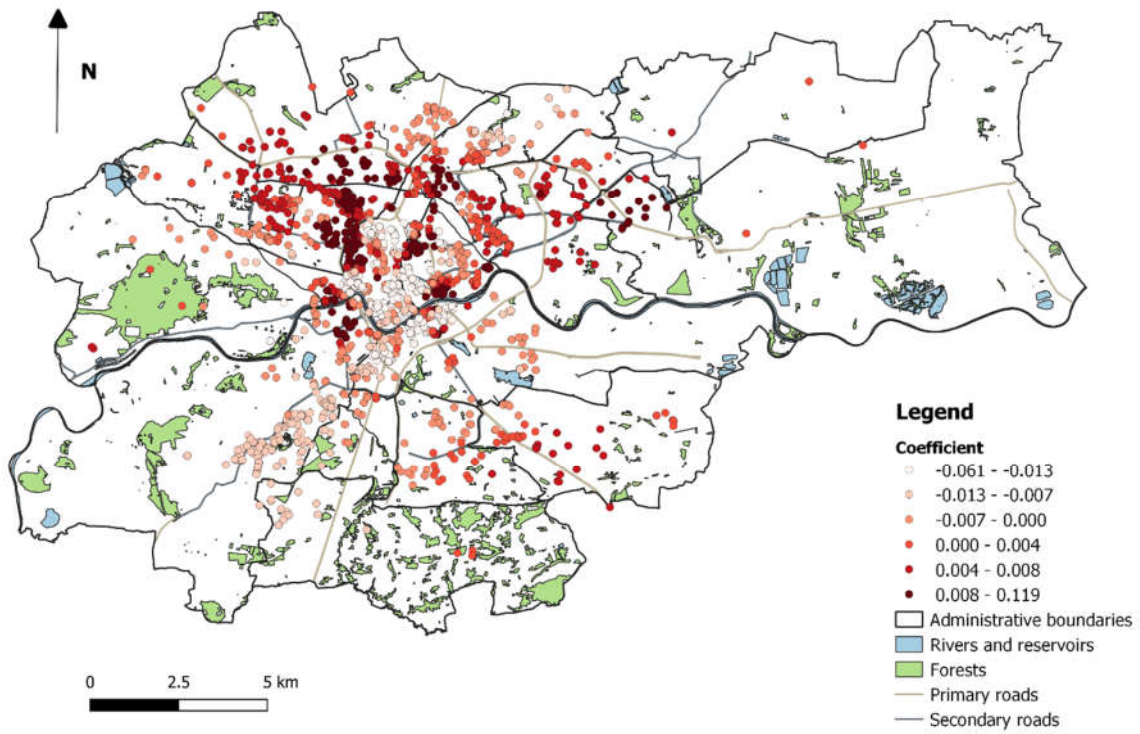


Fig. S17. Local coefficient estimates for DS (distance to nearest school).

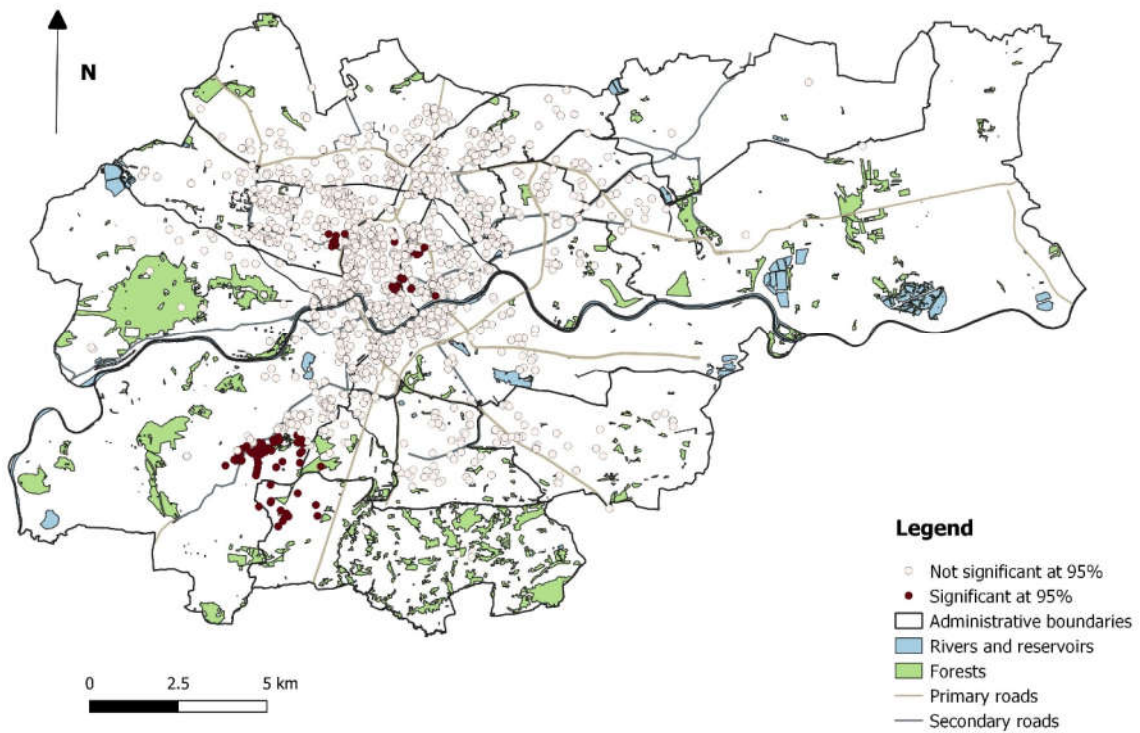


Fig. S18. Statistical significance of estimates for DS (distance to nearest school).

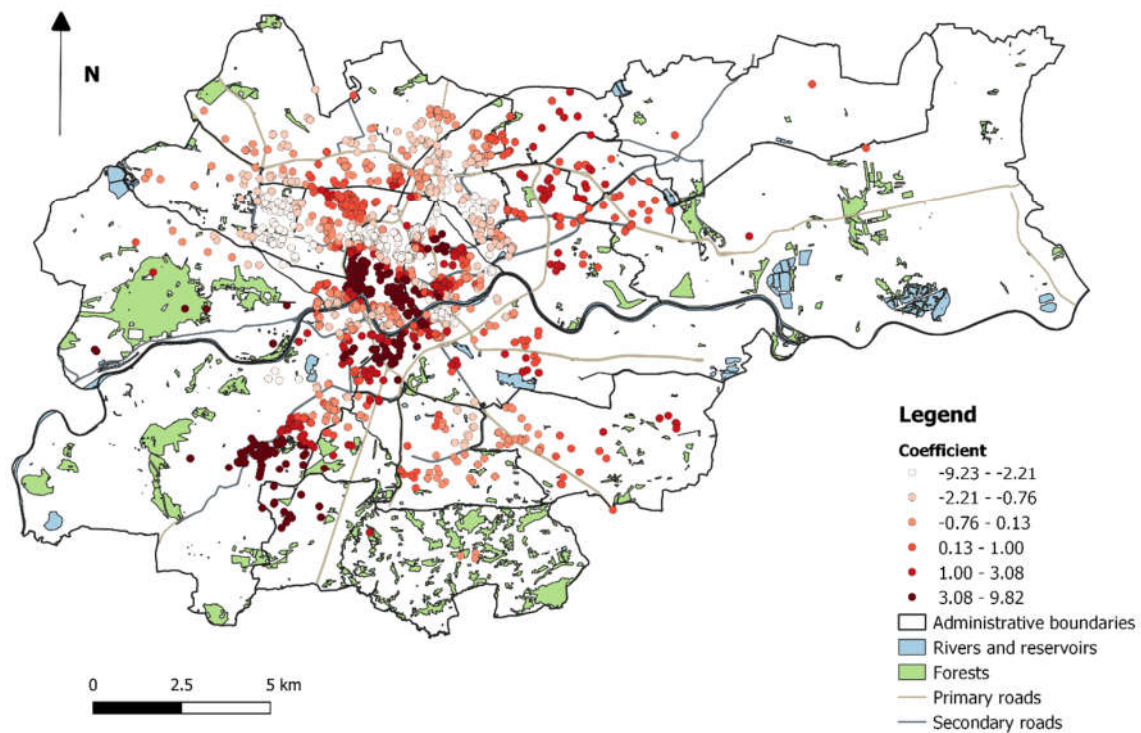


Fig. S19. Local coefficient estimates for DP (distance to nearest pharmacy).

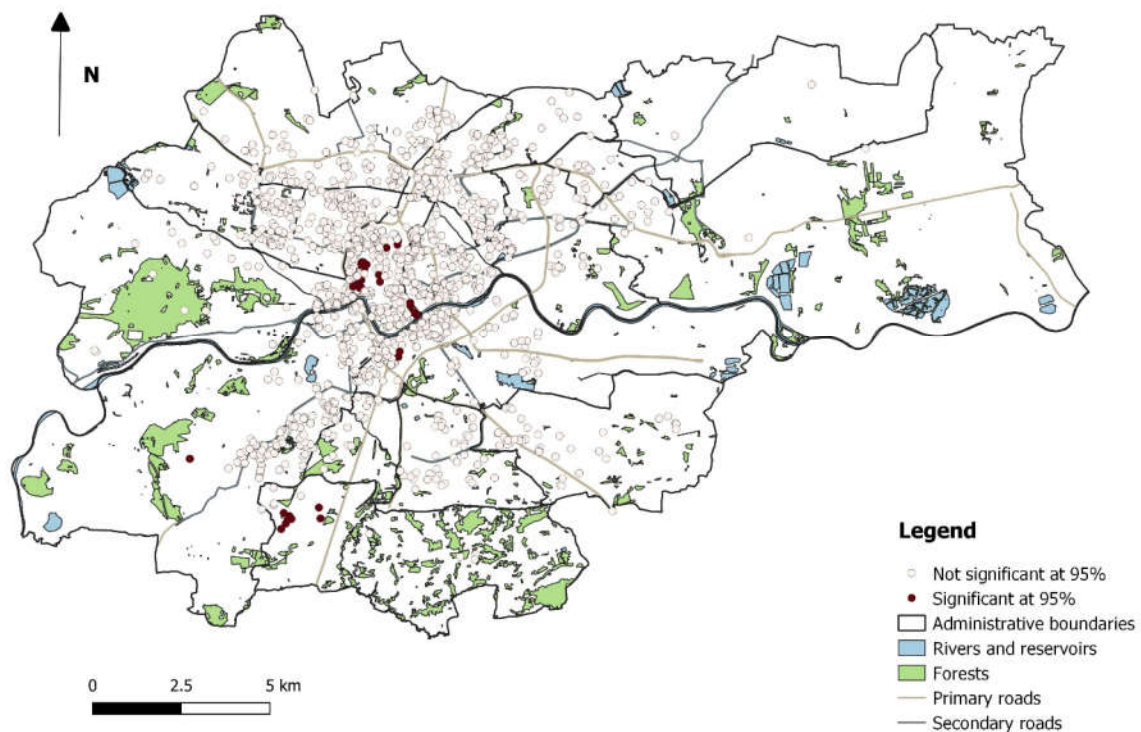
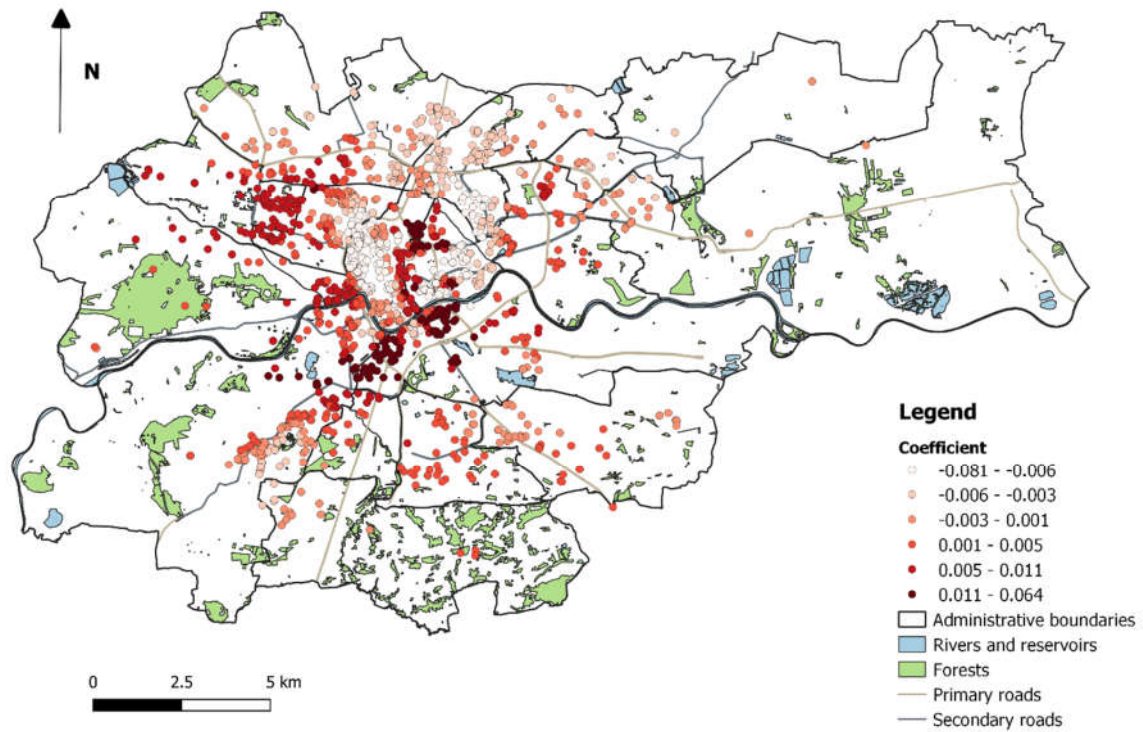
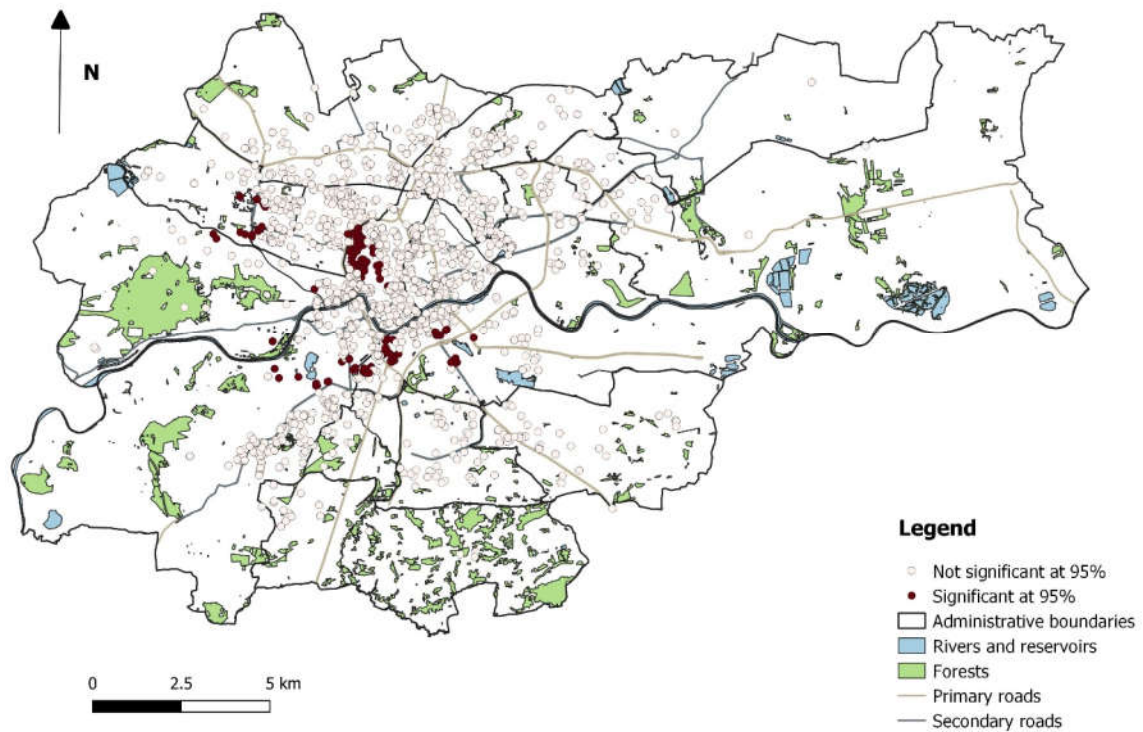


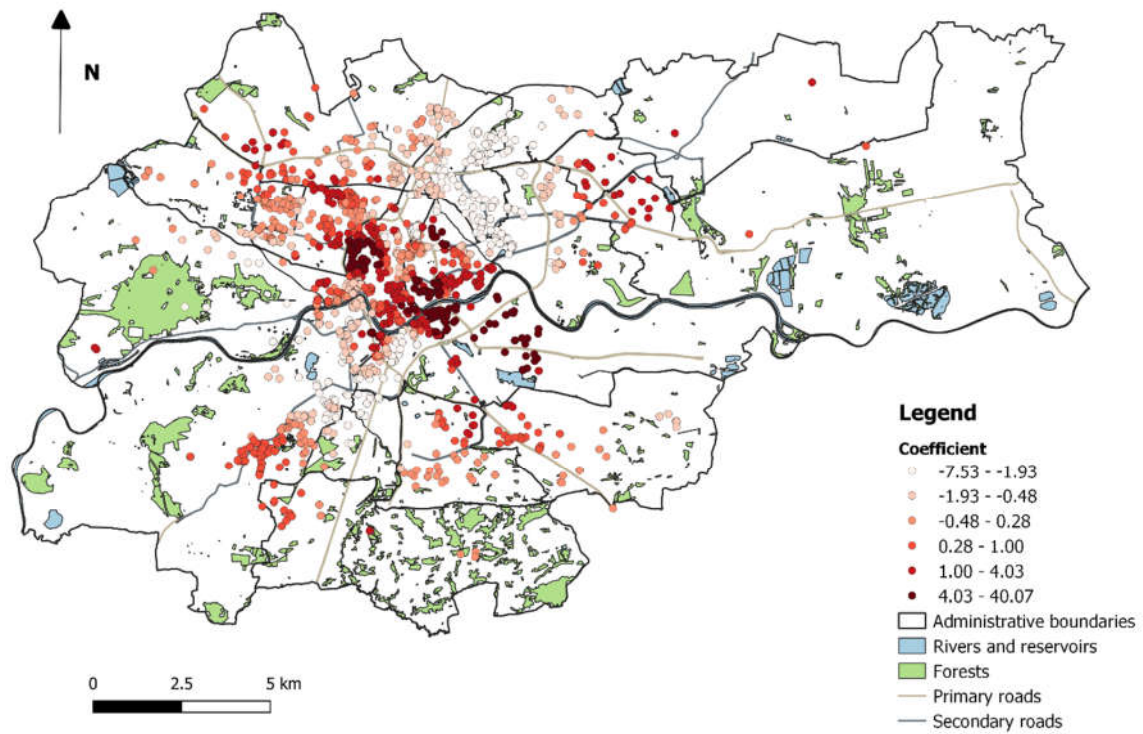
Fig. S20. Statistical significance of estimates for DP (distance to nearest pharmacy).



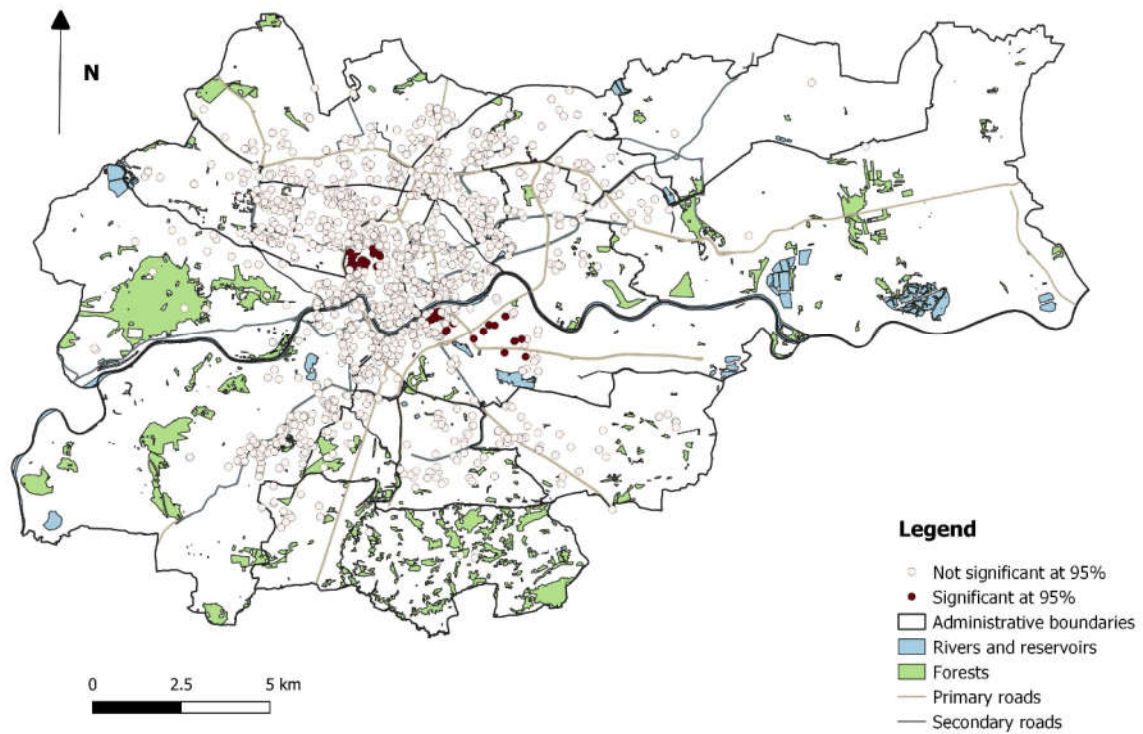
**Fig. S21.** Local coefficient estimates for DSM (distance to nearest shopping mall).



**Fig. S22.** Statistical significance of estimates for DSM (distance to nearest shopping mall).



**Fig. S23.** Local coefficient estimates for DSU (distance to nearest supermarket).



**Fig. S24.** Statistical significance of estimates for DSU (distance to nearest supermarket).

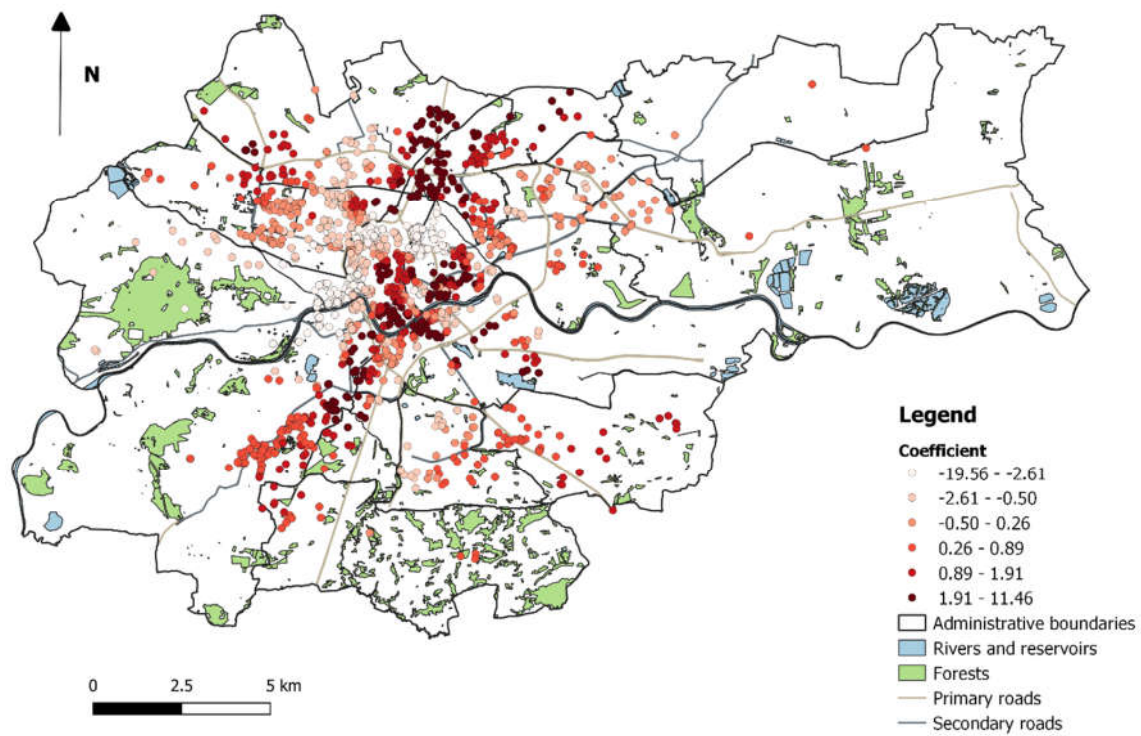


Fig. S25. Local coefficient estimates for DPA (distance to nearest park).

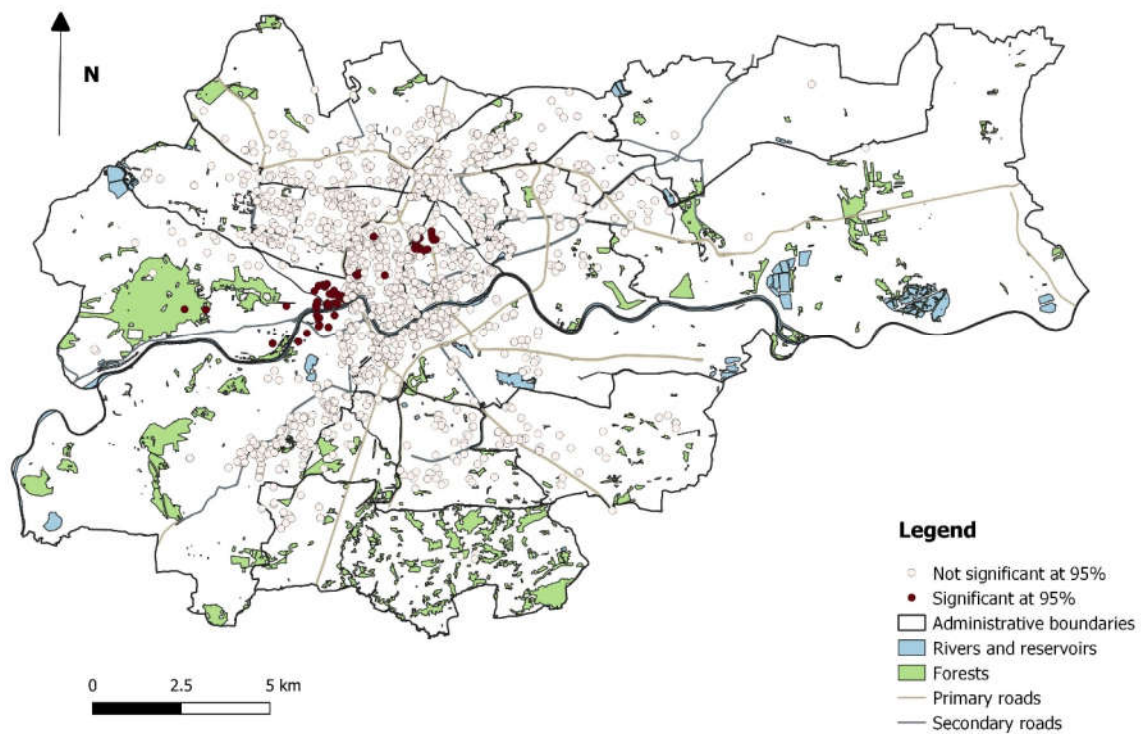


Fig. S26. Statistical significance of estimates for DPA (distance to nearest park).

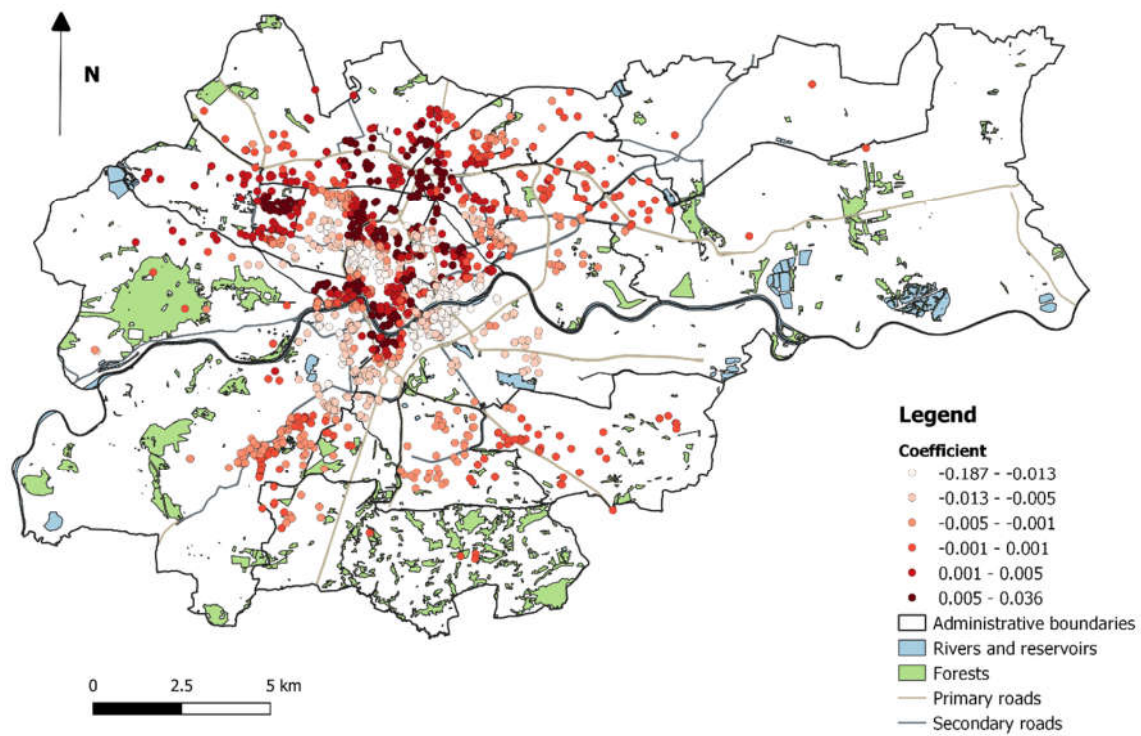


Fig. S27. Local coefficient estimates for DR (distance to nearest river or reservoir).

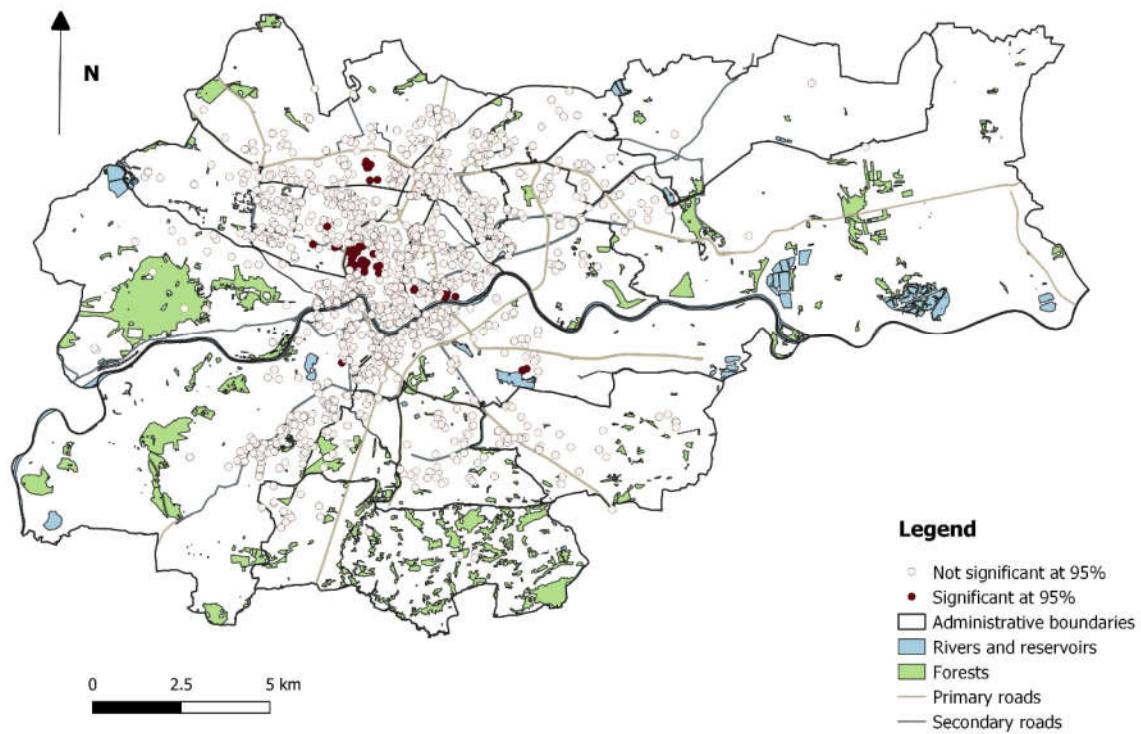


Fig. S28. Statistical significance of estimates for DR (distance to nearest river or reservoir).

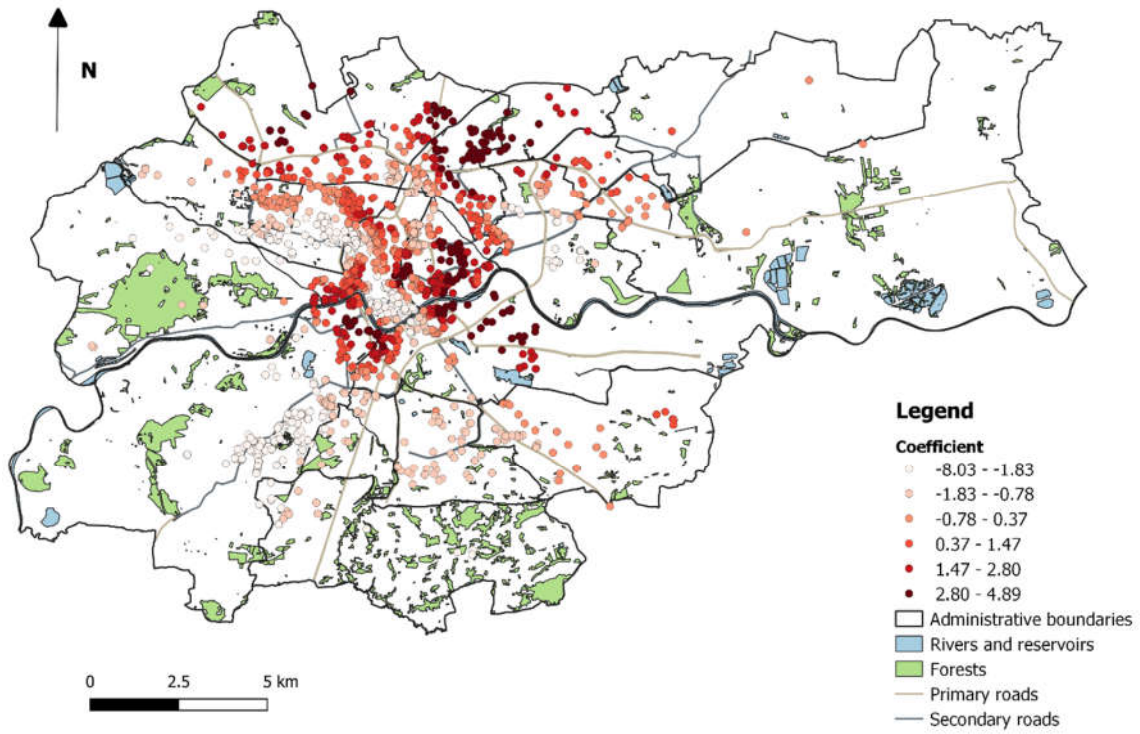


Fig. S29. Local coefficient estimates for AA [availability of additional space (garage, usable room, basement)].

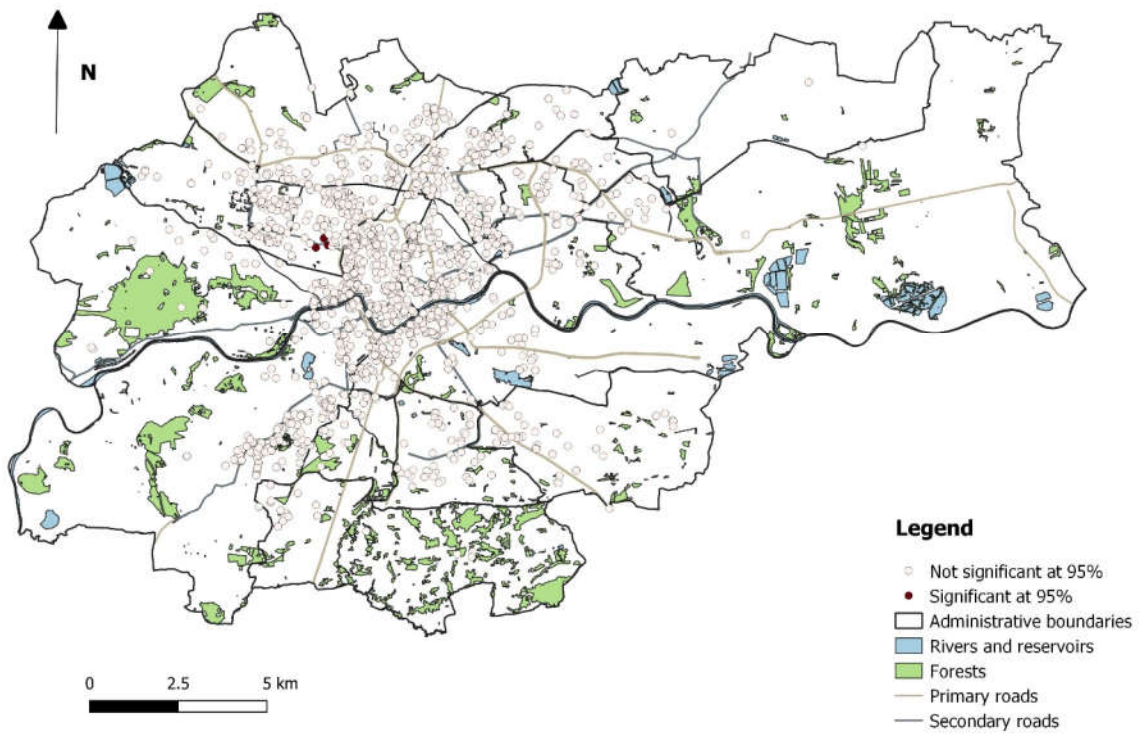


Fig. S30. Statistical significance of estimates for AA [availability of additional space (garage, usable room, basement)].

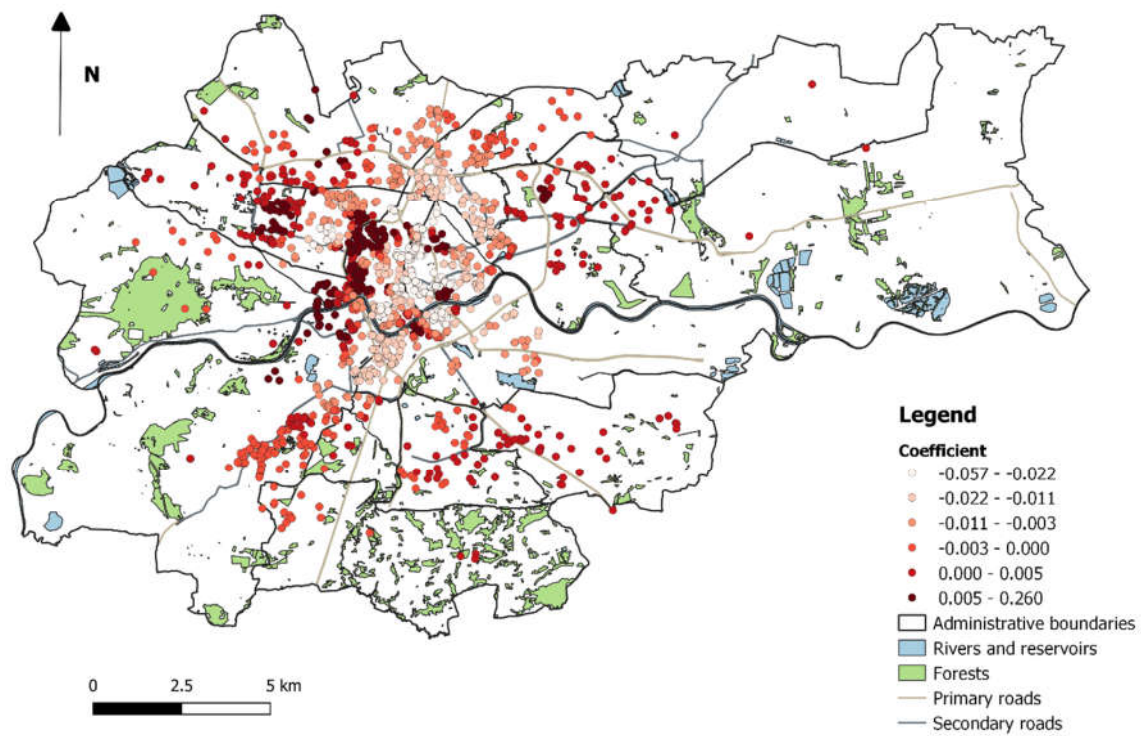


Fig. S31. Local coefficient estimates for DU (distance to nearest university).

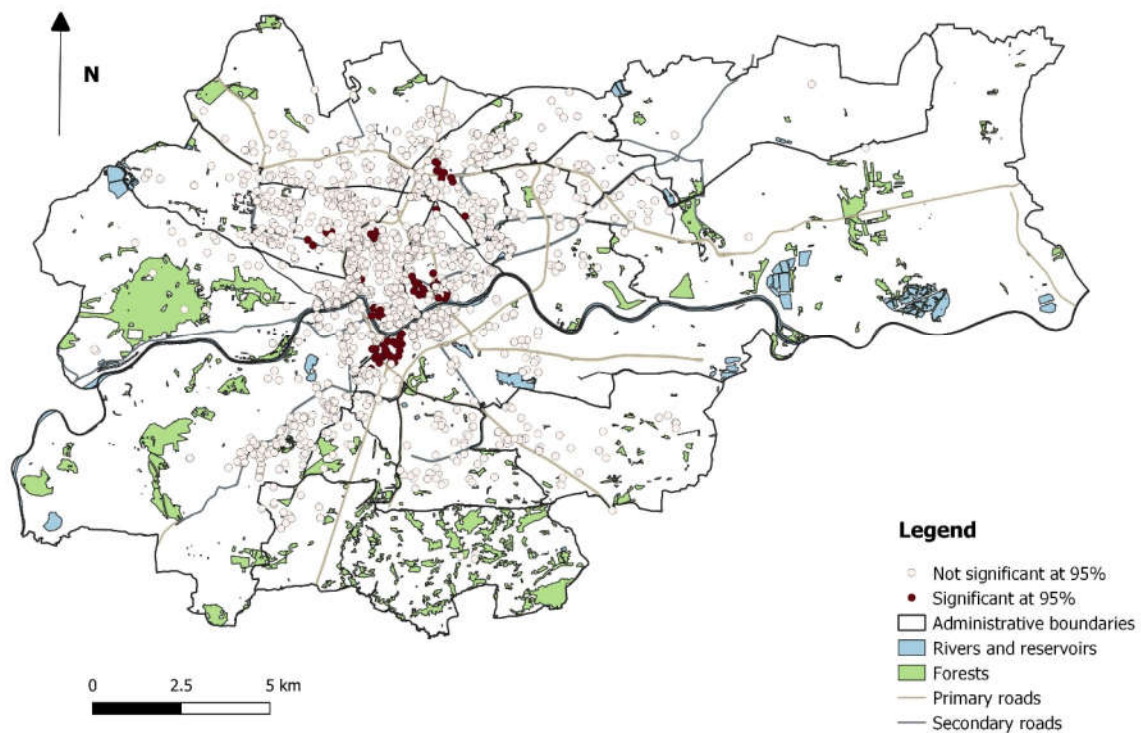


Fig. S32. Statistical significance of estimates for DU (distance to nearest university).