

Supplementary Table

Table S1. Details of soil properties analyzed for experimental soil for 2018–2019 and 2019–2020.

Growing years		Texture	pH	Organic matter	Total N	Available P	Available K
		class	-	g. kg ⁻¹	g. kg ⁻¹	mg. kg ⁻¹	mg. kg ⁻¹
1	2018-19	sandy clay loam	4.77	4.73	0.34	13.03	41.19
2	2019-20		5.29	4.60	0.30	35.58	58.67

Supplementary Figure

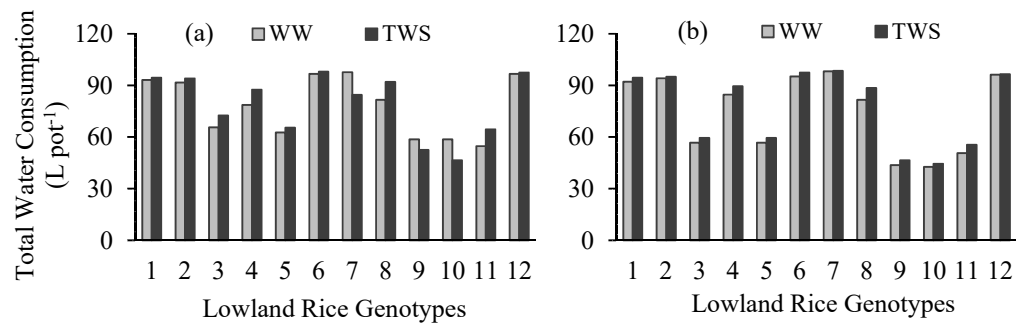


Figure S1. Total amount of irrigation water consumed by lowland rice genotypes under well-watered (WW) and terminal water-stressed (TWS) conditions during 2018–2019 (a) and 2019–2020 (b).