

Monoterpenoids from the Fruits of *Amomum tsao-ko* Have Inhibitory Effects on Nitric Oxide Production

**Seong Su Hong ^{1,*}, Ji Eun Lee ¹, Yeon Woo Jung ¹, Ju-Hyoung Park ², Jung A. Lee ¹, Wonsik Jeong ¹,
Eun-Kyung Ahn ¹, Chun Whan Choi ¹ and Joa Sub Oh ^{2,*}**

¹ *Bio-Center, Gyeonggido Business & Science Accelerator (GBSA), Suwon 16229, Korea.*

² *College of Pharmacy, Dankook University, Cheonan 31116, Korea.*

SUPPORTING INFORMATION

List of Supporting Information	Page
Figure S1. Effect of (1 <i>R</i> ,4 <i>S</i> ,6 <i>S</i>)-1,6-dihydroxy-2-menthene (compound 4) on cell viability and NO production in LPS-stimulated RAW264.7 cells.	S3
Figure S2. The ¹ H NMR spectrum of 1	S4
Figure S3. The ¹³ C NMR spectrum of 1	S4
Figure S4. The ¹ H NMR spectrum of 2	S5
Figure S5. The ¹³ C NMR spectrum of 2	S5
Figure S6. The ¹ H NMR spectrum of 3	S6
Figure S7. The ¹³ C NMR spectrum of 3	S6
Figure S8. The ¹ H NMR spectrum of 4	S7
Figure S9. The ¹³ C NMR spectrum of 4	S7
Figure S10. The ¹ H NMR spectrum of 5	S8
Figure S11. The ¹³ C NMR spectrum of 5	S8
Figure S12. The ¹ H NMR spectrum of 6	S9
Figure S13. The ¹³ C NMR spectrum of 6	S0

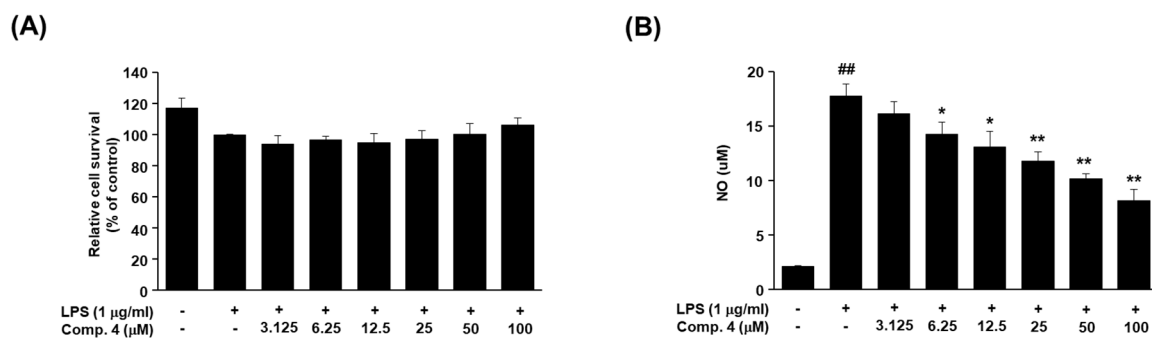
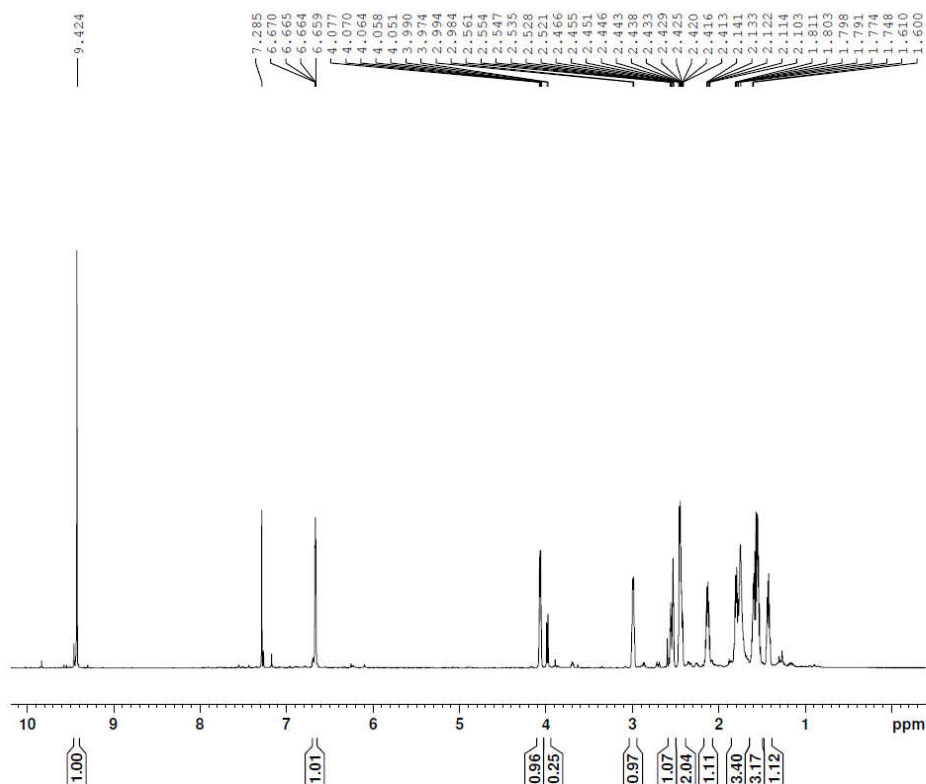


Figure S1. Effect of (1*R*,4*S*,6*S*)-1,6-dihydroxy-2-menthene (compound 4) on cell viability and NO production in LPS-stimulated RAW264.7 cells. The cells were pre-treated with compound 4 (3.125–100 μM) for 1 h and stimulated with LPS (1 μg/mL) for 24 h. (A) Cell viability, as determined using the MTT assay. (B) NO production in the cell culture supernatant, as measured using the Griess reagent. Values represent the mean ± SD of three independent experiments. Statistical significance is indicated (^{##} $p < 0.01$ compared to the untreated control/LPS (-), while ^{*} $p < 0.05$, ^{**} $p < 0.01$, compared to LPS-treated cells group/LPS (+)).

Figure S2.

G47-11-4C_1H_CDC13



```

Current Data Parameters
NAME      HSS
EXPNO    1
PROCNO   1

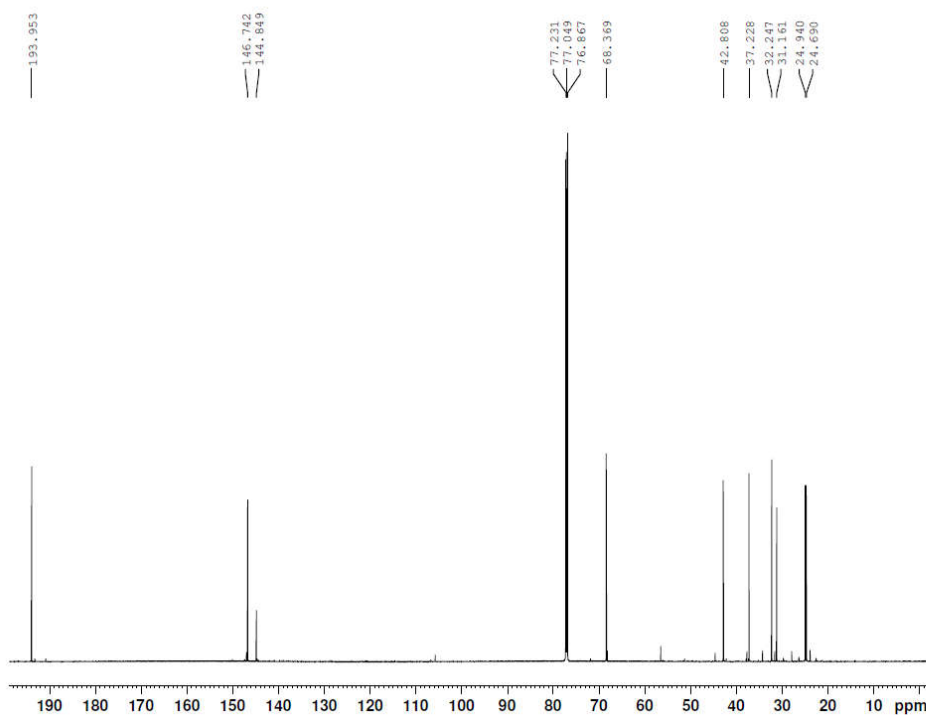
F2 - Acquisition Parameters
Date_    20120915
Time     4.32
INSTRUM  spect
PROBHD   5 mm CPQNP 1H/
PULPROG  zg30
TD        65536
SOLVENT  CDC13
NS        16
DS        2
SWH       14423.077 Hz
FIDRES    0.220079 Hz
AQ        2.2719147 sec
RG        4.04
DW        34.667 usec
DE        10.00 usec
TE        297.0 K
D1        1.00000000 sec
TDO       1

----- CHANNEL f1 -----
NUC1      1H
P1         14.00 usec
PLW1      11.00000000 W
SFO1      700.5343261 MHz

F2 - Processing parameters
SI         65536
SF         700.5300000 MHz
WDW        EM
SSB        0
LB         0.30 Hz
GB         0
PC         1.00
    
```

Figure S3.

G47-11-4C_13C_CDC13



```

Current Data Parameters
NAME      HSS
EXPNO    2
PROCNO   1

F2 - Acquisition Parameters
Date_    20120914
Time     21.58
INSTRUM  spect
PROBHD   5 mm CPQNP 1H/
PULPROG  zgpg30
TD        65536
SOLVENT  CDC13
NS        514
DS        2
SWH       41666.668 Hz
FIDRES    0.635783 Hz
AQ        0.7864320 sec
RG        1620
DW        12.000 usec
DE        18.00 usec
TE        297.0 K
D1        2.00000000 sec
D11       0.03000000 sec
TDO       1

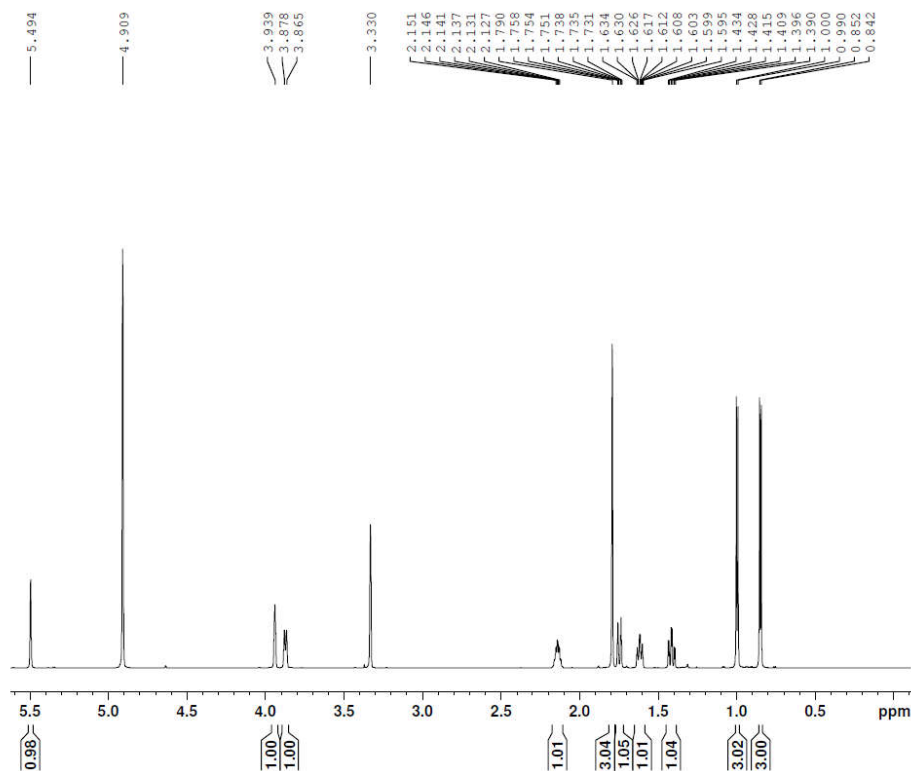
----- CHANNEL f1 -----
NUC1      13C
P1         12.00 usec
PLW1      22.79999924 W
SFO1      176.1660234 MHz

----- CHANNEL f2 -----
CPDPRG2  waltz16
NUC2      1H
PCPD2    65.00 usec
PLW2     11.00000000 W
PLW12    0.49000001 W
PLW13    0.25000000 W
SFO2     700.5328021 MHz

F2 - Processing parameters
SI         32768
SF         176.1484090 MHz
WDW        EM
SSB        0
LB         1.00 Hz
GB         0
PC         1.40
    
```

Figure S4.

G47-8-7C_1H_CDC13



```

Current Data Parameters
NAME      HSS
EXPNO    3
PROCNO   1

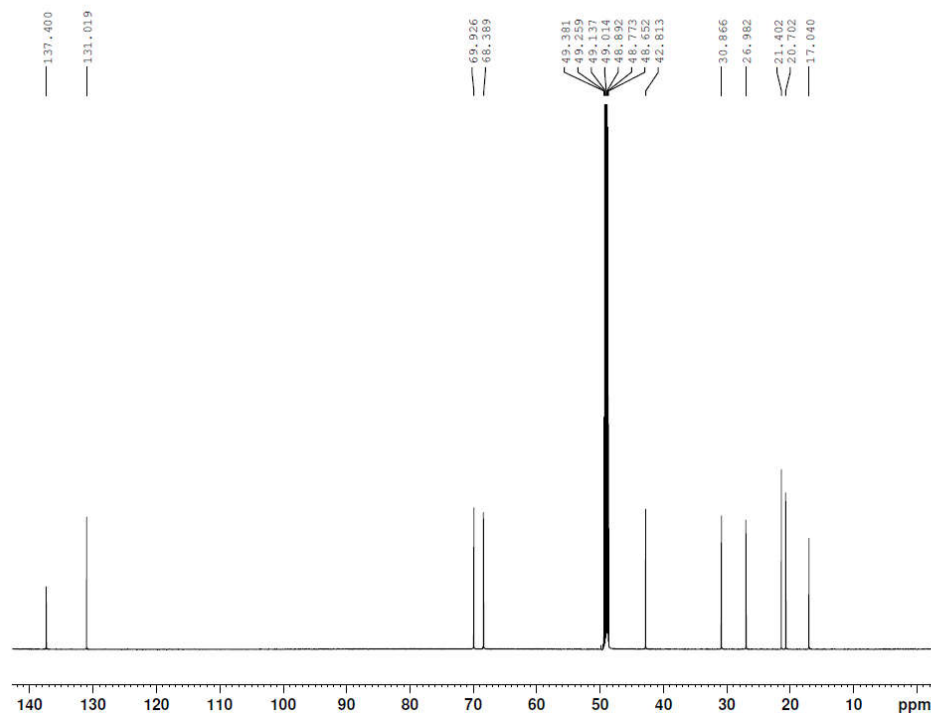
F2 - Acquisition Parameters
Date_    20120914
Time     22.02
INSTRUM spect
PROBHD   5 mm CPQNP 1H/
PULPROG zg30
TD       65536
SOLVENT  MeOD
NS       16
DS       2
SWH      14423.077 Hz
FIDRES   0.220079 Hz
AQ       2.271917 sec
RG       8.87
DW       34.667 usec
DE       10.00 usec
TE       297.0 K
D1       1.0000000 sec
TD0      1

----- CHANNEL f1 -----
NUC1     1H
P1       14.00 usec
PLW1     11.0000000 W
SFO1     700.5343261 MHz

F2 - Processing parameters
SI       65536
SF       700.5300000 MHz
WDW      EM
SSB      0
GB       0
PC       1.00
    
```

Figure S5.

G47-8-7C_13C_CDC13



```

Current Data Parameters
NAME      HSS
EXPNO    4
PROCNO   1

F2 - Acquisition Parameters
Date_    20120914
Time     22.28
INSTRUM spect
PROBHD   5 mm CPQNP 1H/
PULPROG zgpg30
TD       65536
SOLVENT  MeOD
NS       514
DS       2
SWH      41666.668 Hz
FIDRES   0.635783 Hz
AQ       0.7864320 sec
RG       1440
DW       12.000 usec
DE       18.00 usec
TE       297.0 K
D1       2.0000000 sec
D11      0.0300000 sec
TD0      1

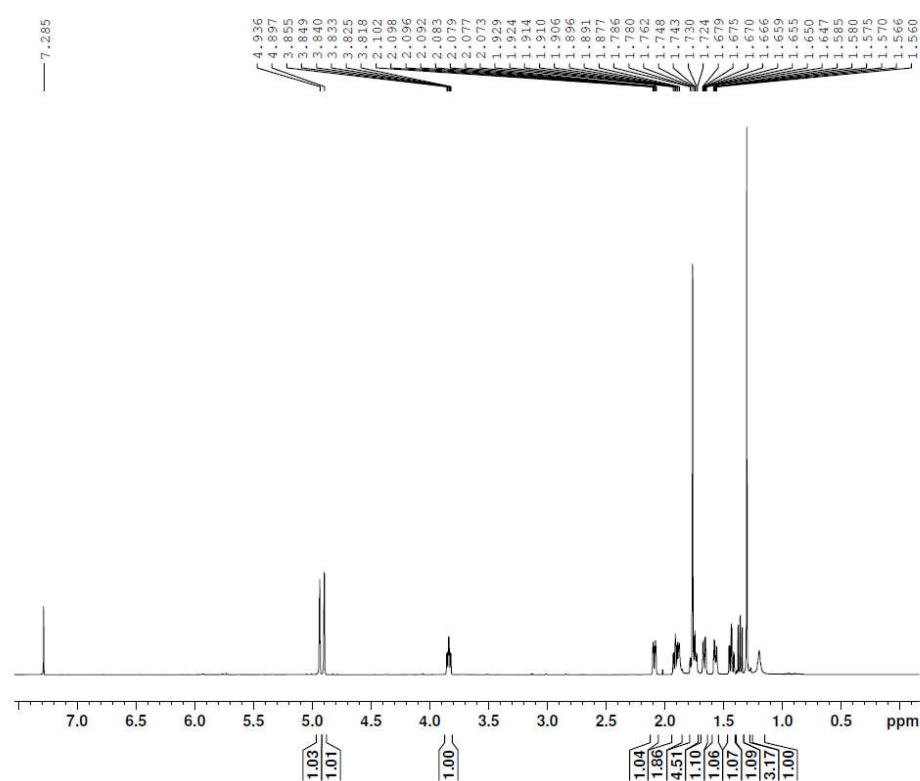
----- CHANNEL f1 -----
NUC1     13C
P1       12.00 usec
PLW1     22.79999924 W
SFO1     176.1660234 MHz

----- CHANNEL f2 -----
CPDPRG[2] waltz16
NUC2     1H
PCPD2    65.00 usec
PLW2     11.0000000 W
PLW12    0.4900001 W
PLW13    0.2500000 W
SFO2     700.5328021 MHz

F2 - Processing parameters
SI       32768
SF       176.1481589 MHz
WDW      RM
SSB      0
GB       0
PC       1.40
    
```

Figure S6.

G47-9-7C_1H_CDCl3



```

Current Data Parameters
NAME          HSS
EXPNO        5
PROCNO       1

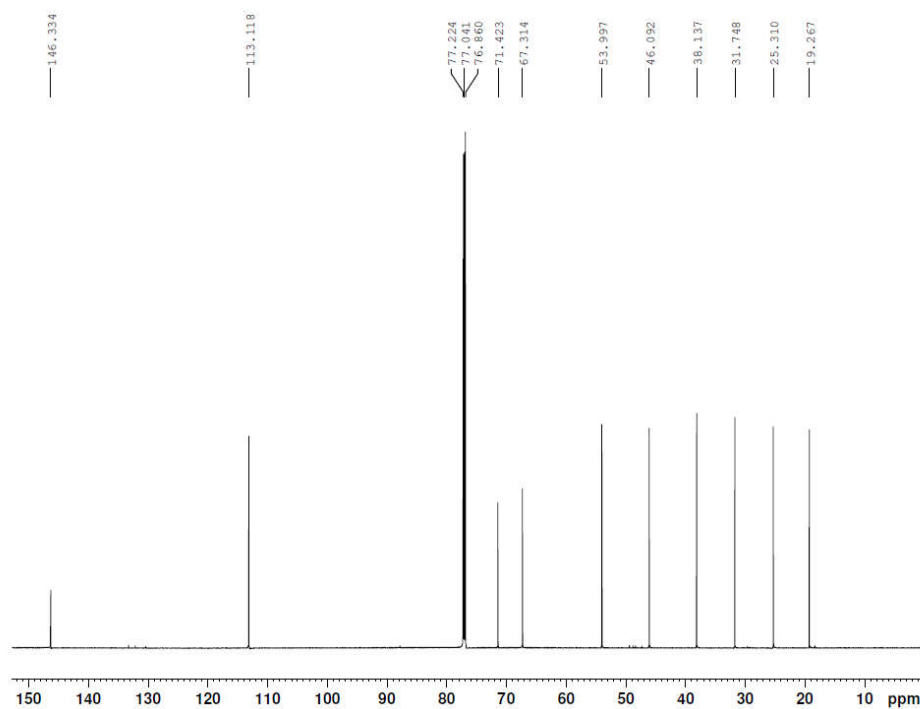
F2 - Acquisition Parameters
Date_        20120914
Time         22.32
INSTRUM     spect
PROBHD      5 mm CPQNP 1H/
PULPROG     zg30
TD          65536
SOLVENT     CDCl3
NS          16
DS          2
SWH         14423.077 Hz
FIDRES     0.220079 Hz
AQ         2.271917 sec
RG         7.13
DW         34.667 usec
DE         10.00 usec
TE         297.0 K
D1         1.00000000 sec
TDO        1

----- CHANNEL f1 -----
NUC1        1H
P1          14.00 usec
PLW1       11.00000000 W
SF01       700.5343261 MHz

F2 - Processing parameters
SI          65536
SF         700.5300000 MHz
WDW        EM
SSB        0
LB         0.30 Hz
GB         0
PC         1.00
    
```

Figure S7.

G47-9-7C_13C_CDCl3



```

Current Data Parameters
NAME          HSS
EXPNO        6
PROCNO       1

F2 - Acquisition Parameters
Date_        20120914
Time         22.58
INSTRUM     spect
PROBHD      5 mm CPQNP 1H/
PULPROG     zgpg30
TD          65536
SOLVENT     CDCl3
NS          514
DS          2
SWH         41666.668 Hz
FIDRES     0.635783 Hz
AQ         0.7864320 sec
RG         1440
DW         12.000 usec
DE         18.00 usec
TE         297.0 K
D1         2.00000000 sec
D11        0.03000000 sec
TDO        1

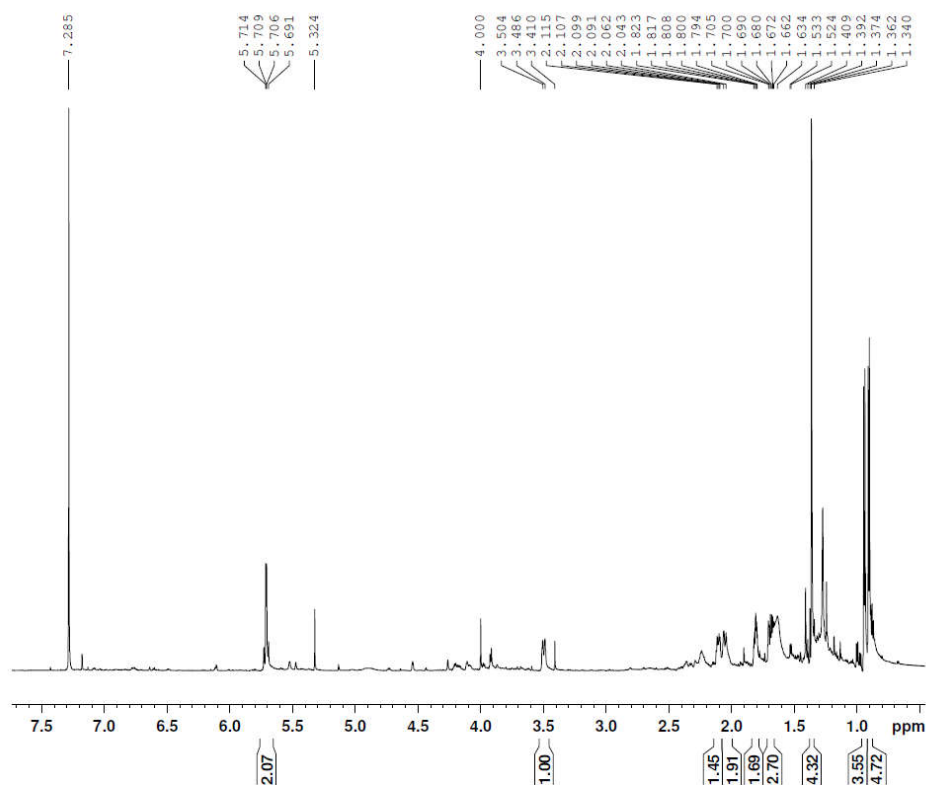
----- CHANNEL f1 -----
NUC1        13C
P1          12.00 usec
PLW1       22.79999924 W
SF01       176.1660234 MHz

----- CHANNEL f2 -----
CPDPRG[2]   waitz16
NUC2        1H
PCPD2       65.00 usec
PLW2       11.00000000 W
PLW12      0.49000001 W
PLW13      0.25000000 W
SF02       700.5328021 MHz

F2 - Processing parameters
SI          32768
SF         176.1484090 MHz
WDW        EM
SSB        0
LB         1.00 Hz
GB         0
PC         1.40
    
```

Figure S8.

G47-12-4_1H_CDC13



```

Current Data Parameters
NAME      HSS
EXPNO    55
PROCNO   1

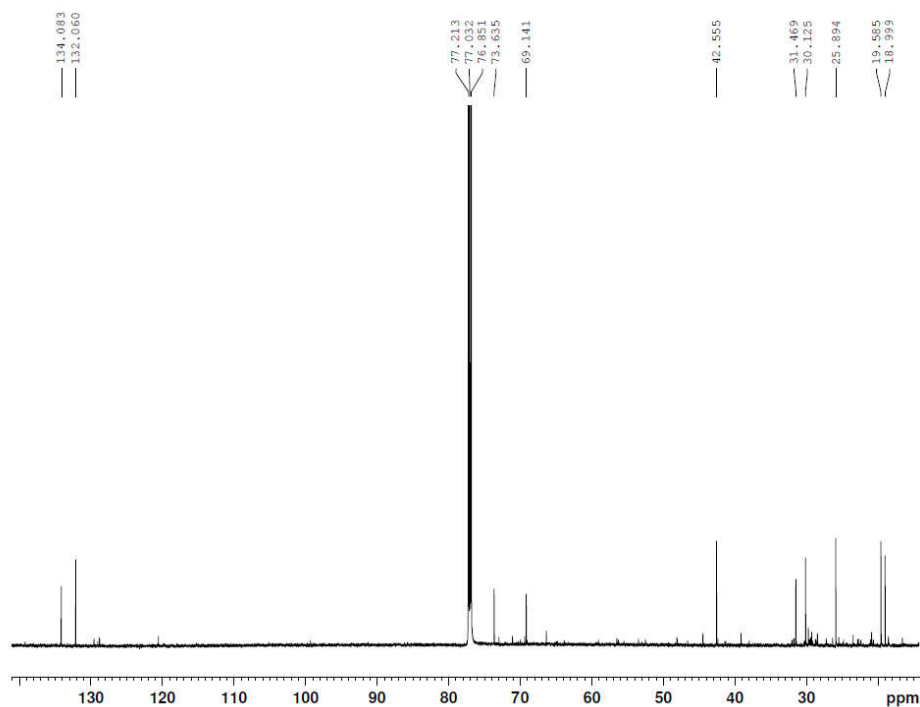
F2 - Acquisition Parameters
Date_    20130225
Time     22.01
INSTRUM  spect
PROBHD   5 mm CPQNP 1H/
PULPROG  zg30
TD       65536
SOLVENT  CDC13
NS       16
DS       2
SWH      14423.077 Hz
FIDRES   0.220079 Hz
AQ       2.2719646 sec
RG       4.04
DW       34.467 usec
DE       10.00 usec
TE       297.0 K
D1       1.0000000 sec
TDO      1

----- CHANNEL f1 -----
NUC1     1H
P1       14.00 usec
PLM1    11.0000000 W
SF01    700.5343261 MHz

F2 - Processing parameters
SI       65536
SF       700.5300000 MHz
WVW      EM
SSB      0
LB       0.30 Hz
GB       0
PC       1.00
    
```

Figure S9.

G47-12-4_13C_CDC13



```

Current Data Parameters
NAME      HSS
EXPNO    27
PROCNO   1

F2 - Acquisition Parameters
Date_    20130222
Time     15.14
INSTRUM  spect
PROBHD   5 mm CPQNP 1H/
PULPROG  zgpg30
TD       65536
SOLVENT  CDC13
NS       512
DS       2
SWH      41666.668 Hz
FIDRES   0.435783 Hz
AQ       0.7864820 sec
RG       1620
DW       12.000 usec
DE       18.00 usec
TE       297.0 K
D1       2.0000000 sec
D11      0.0300000 sec
TDO      1

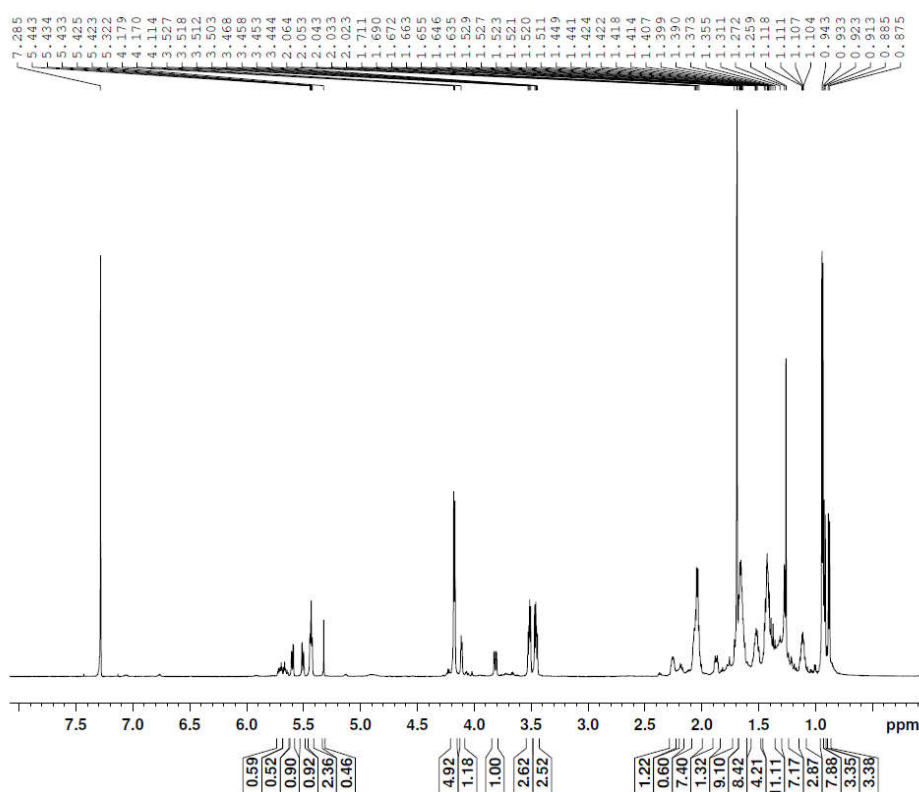
----- CHANNEL f1 -----
NUC1     13C
P1       12.00 usec
PLM1    22.7999992 W
SF01    176.1660234 MHz

----- CHANNEL F2 -----
CPDPRG2  waitz16
NUC2     1H
PCPD2   65.00 usec
PLM2    11.0000000 W
PLM12   0.49000001 W
PLM13   0.2500000 W
SF02    700.5328021 MHz

F2 - Processing parameters
SI       32768
SF       176.1484090 MHz
WVW      EM
SSB      0
LB       1.00 Hz
GB       0
PC       1.40
    
```

Figure S10.

G47-12-8_1H_CDC13



```

Current Data Parameters
NAME      H5S
EXPNO    50
PROCNO   1

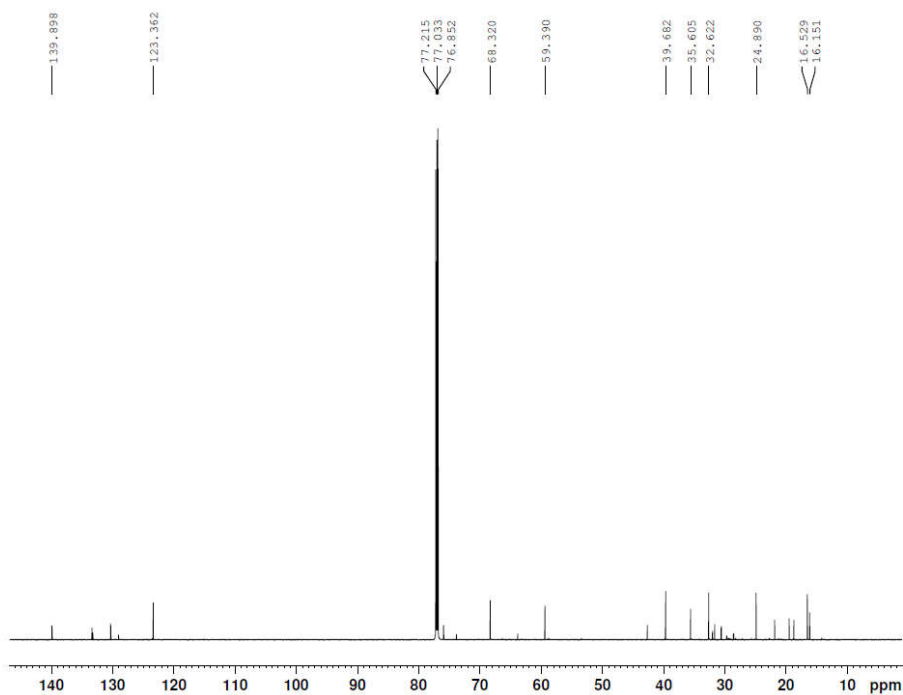
F2 - Acquisition Parameters
Date_    20130222
Time     19.51
INSTRUM  spect
PROBHD   5 mm CPQNP 1H/
PULPROG  zg30
TD        65356
SOLVENT  CDC13
NS        2
DS        2
SWH       14423.077 Hz
FIDRES    0.220079 Hz
AQ        2.2715646 sec
RG         7.13
DW        34.667 usec
DE        10.00 usec
TE        297.0 K
D1        1.00000000 sec
TDO       1

----- CHANNEL f1 -----
NUC1     1H
P1       14.00 usec
P1M1    11.00000000 W
SF01    700.5343261 MHz

F2 - Processing parameters
SI       65536
SF       700.5300000 MHz
WDW      EM
SSB      0
LB       0.30 Hz
GB       0
PC       1.00
    
```

Figure S11.

G47-12-8_13C_CDC13



```

Current Data Parameters
NAME      H5S
EXPNO    51
PROCNO   1

F2 - Acquisition Parameters
Date_    20130222
Time     20.42
INSTRUM  spect
PROBHD   5 mm CPQNP 1H/
PULPROG  zgpg30
TD        65356
SOLVENT  CDC13
NS        2
DS        2
SWH       41666.668 Hz
FIDRES    0.631534 Hz
AQ        0.7842720 sec
RG        1440
DW        12.000 usec
DE        18.00 usec
TE        297.0 K
D1        2.00000000 sec
D11      0.03000000 sec
TDO       1

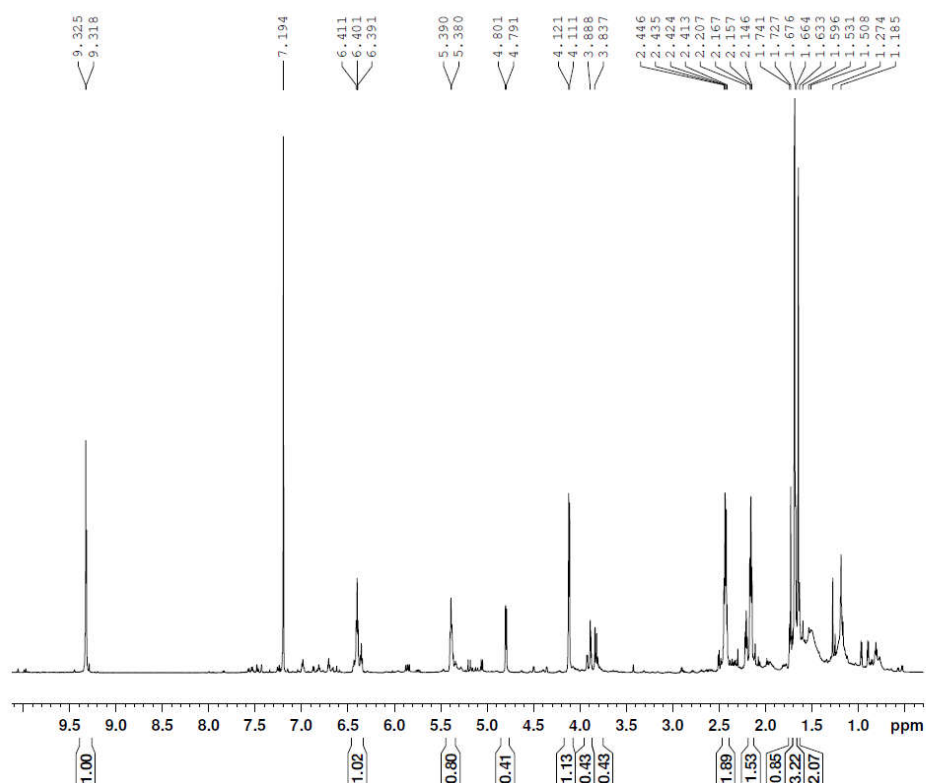
----- CHANNEL f1 -----
NUC1     13C
P1       12.00 usec
P1M1    22.79999924 W
SF01    176.1660234 MHz

----- CHANNEL f2 -----
CPDPRG2  waltz16
NUC2     1H
PCPD2    65.00 usec
P1M2    11.00000000 W
P1M12   0.49000001 W
P1M13   0.25000000 W
SF02    700.5328021 MHz

F2 - Processing parameters
SI       32768
SF       176.1484090 MHz
WDW      EM
SSB      0
LB       1.00 Hz
GB       0
PC       1.40
    
```


Figure S12.

G47-12-21_1H_CDC13



```

Current Data Parameters
NAME      HSS
EXPNO    28
PROCNO   1

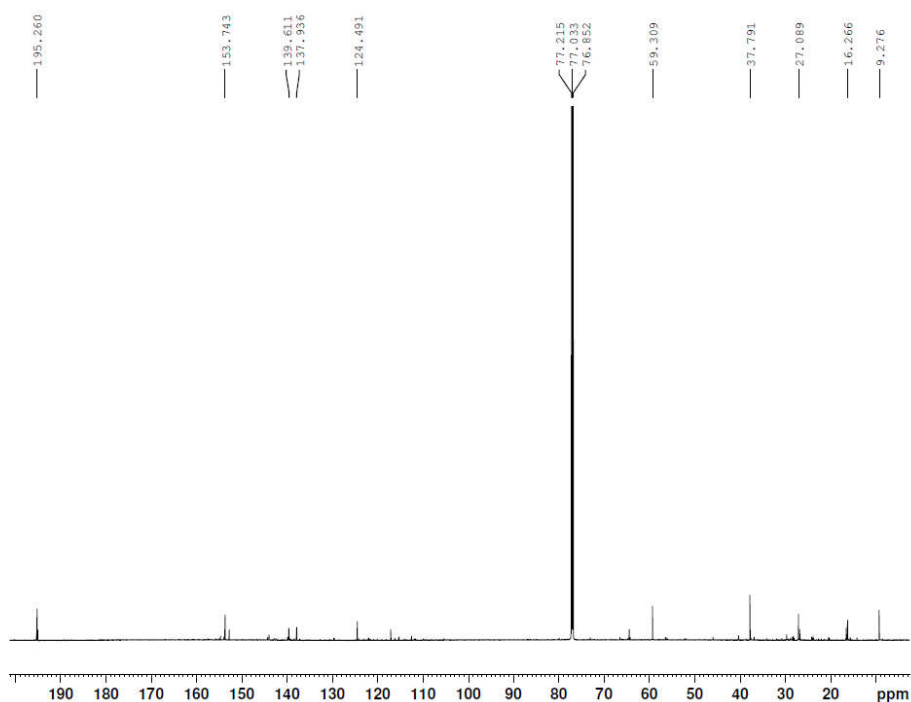
F2 - Acquisition Parameters
Date_    20130222
Time     15.21
INSTRUM  spect
PROBHD   5 mm CPQNP 1H/
PULPROG  zg30
TD       65536
SOLVENT  CDC13
NS       16
DS       2
SWH      14423.077 Hz
FIDRES   0.220079 Hz
AQ       2.2719646 sec
RG       4.83
DW       34.667 usec
DE       10.00 usec
TE       297.0 K
D1       1.00000000 sec
TDO      1

----- CHANNEL f1 -----
NUC1     1H
P1       14.00 usec
PLW1    11.00000000 W
SFO1    700.5343261 MHz

F2 - Processing parameters
SI       65536
SF       700.5300627 MHz
WDW      EM
SSB      0
LB       0.30 Hz
GB       0
PC       1.00
    
```

Figure S13.

G47-12-21_13C_CDC13



```

Current Data Parameters
NAME      HSS
EXPNO    29
PROCNO   1

F2 - Acquisition Parameters
Date_    20130222
Time     15.23
INSTRUM  spect
PROBHD   5 mm CPQNP 1H/
PULPROG  zgpg30
TD       65536
SOLVENT  CDC13
NS       1024
DS       2
SWH      41666.668 Hz
FIDRES   0.625782 Hz
AQ       0.7884320 sec
RG       1440
DW       12.000 usec
DE       18.00 usec
TE       297.0 K
D1       2.00000000 sec
D11      0.03000000 sec
TDO      1

----- CHANNEL f1 -----
NUC1     13C
P1       12.00 usec
PLW1    22.79999924 W
SFO1    176.1660234 MHz

----- CHANNEL f2 -----
CPDPRG2  waltz16
NUC2     1H
PCPD2    65.00 usec
PLW2    11.00000000 W
PLW12   0.49000001 W
PLW13   0.25000000 W
SFO2    700.5328021 MHz

F2 - Processing parameters
SI       32768
SF       176.1484090 MHz
WDW      EM
SSB      0
LB       1.00 Hz
GB       0
PC       1.40
    
```