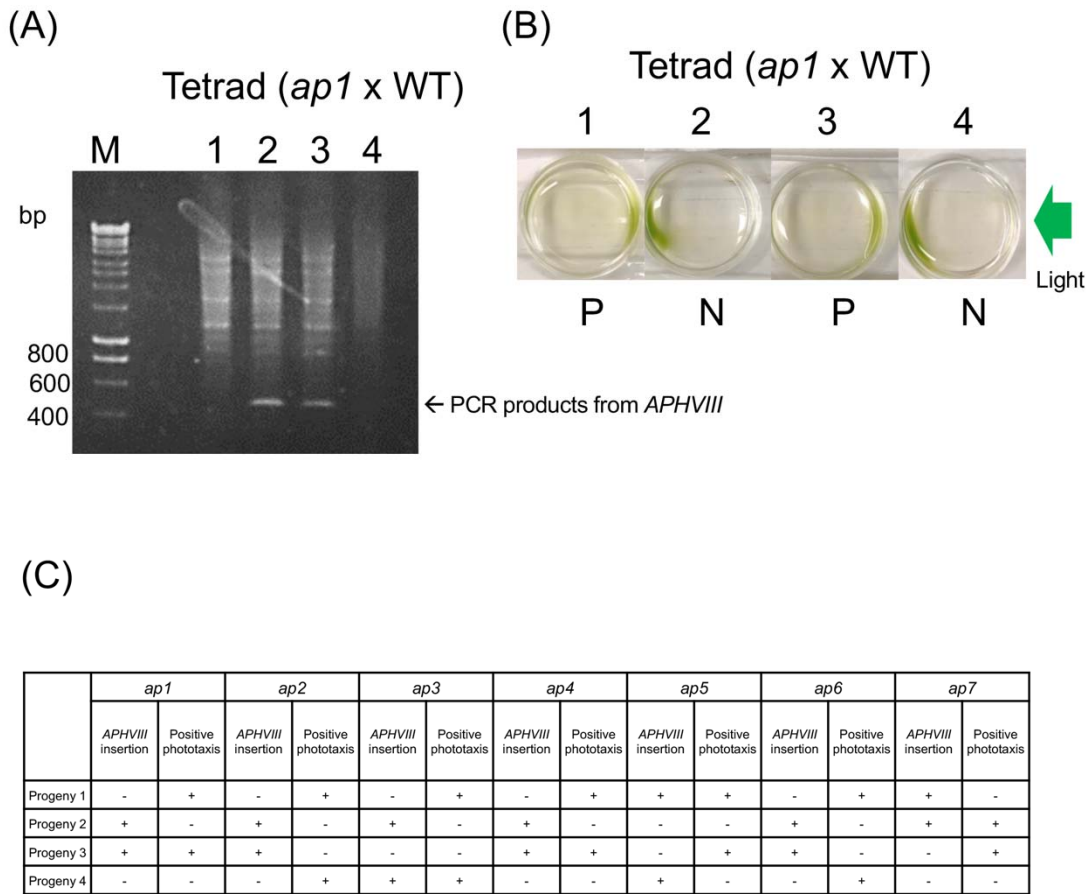


Supplementary Figure



**Figure S1. Tetrad analysis to test linkage between phenotype and genotype.** (A) An example of PCR of the tetrad progenies *ap1* × WT. Here, progenies 2 and 3 had *APHVIII* insertion. (B) Phototaxis analysis after treatment with 75 mM DMTU for the same tetrad as (A). Progeny 1 and 3 showed positive (P), and 2 and 4 showed negative (N) phototaxis. From the data in (A) and (B), the *ap* phenotype in *ap1* is shown not to be caused by *APHVIII* insertion. (C) Representative tetrad analyses of each *ap* mutant. Each tetrad contained a progeny with *APHVIII* insertion that did not show positive phototaxis after treatment with DMTU.