

Supplementary material

Himalayan *Ficus palmata* L. Fruit Extract Showed In Vivo Central and Peripheral Analgesic Activity Involving COX-2 and Mu Opioid Receptors

Table S1. Gradient conditions of the mobile phase for HPLC.

Time	Flow Rate	% of solvent A	% of Solvent B
0.01	1.5	75	25
18.00	1.5	50	50
25.01	1.5	25	75
32.0	1.5	20	80
35.0	1.5	50	50
40.0	1.5	75	25
45.0	1.5	75	Stop

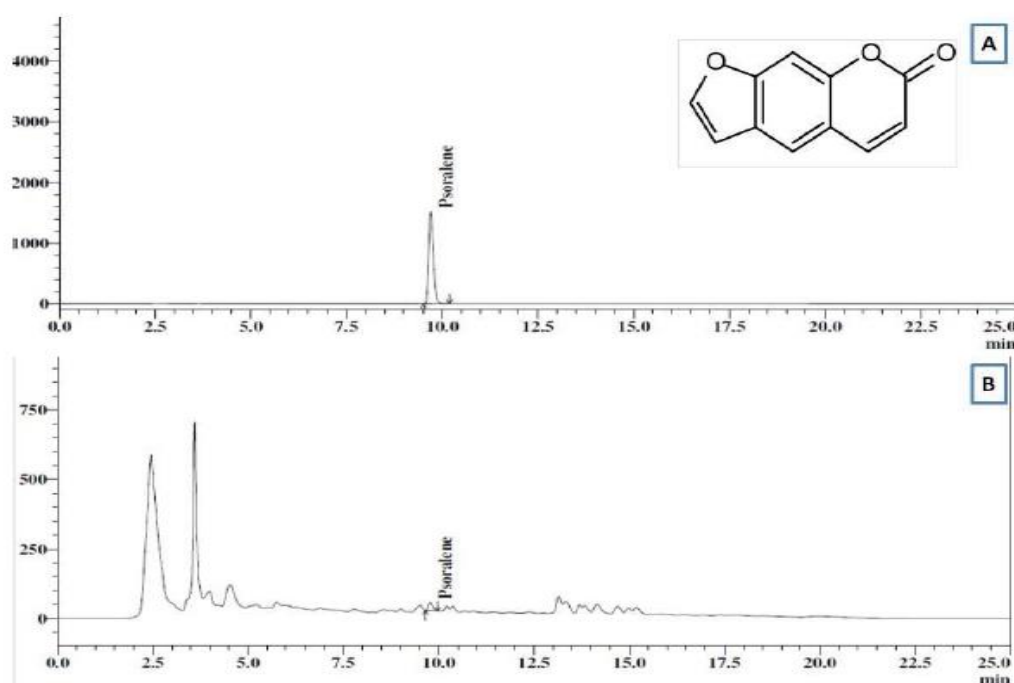


Figure S1. RP-HPLC chromatogram of psoralen standard (A) and psoralen identified in *F. palmata* sample (B).